

GENERAL**Operational Hours**

ATS Hours / AD ADMIN Hours: See NOTAM.

Airport Information

RFF: CAT 7

PCN: RWY 08/26: 77/R/C/X/T

Operation**Traffic Notes**

For special AD requirements contact CAA, 5 working days prior the flight.

AD not AVBL as ALTN.

Preferential RWY

LDG: RWY 08.

DEP: RWY 26.

Preferring a different RWY other than designated by ATC only possible if PIC duly accept the responsibility and indicate this selection clearly to ATC.

Warnings

GZP NDB unusable: between 320°-120°.

GZP DME unusable: between R301-R159.

RWY 08 LOC/DME unusable: outside 10° of the nominal inbound track.

ARRIVAL**Speed**

MAX IAS 250KT within TMA at or below 10000ft (refer RFCs).

Communication**COM Failure**

At or after IF BEPTO

Continue APCH. Execute RNAV (GNSS) procedure and land.

Before IF BEPTO / At or above 11000ft

Follow FPR using last assigned and acknowledged FL / ALT. Within D25 of GZP NDB / DME, proceed direct to GZP NDB descending / maintaining 11000ft. Leave 11000ft at GZP NDB. Execute IAP and land.

Below 11000ft

Climb 11000ft following RNAV (GNSS) procedure laterally. Then proceed direct to GZP NDB maintaining 11000ft. Leave 11000ft at GZP NDB. Execute IAP and land.

05-JAN-2017

GZP-LTFG

1-20

AOI**AOI****DEPARTURE****Take-off Minima**

RWY		26	
All ACFT	ft - m/km	0 - 400v	-
RWY		08	
All ACFT	ft - m/km	Not applicable	No TORA

Speed

MAX IAS 250KT within TMA at or below 10000ft (refer RFCs).

ATC Slot, Clearance**Start-up:** For start-up PROCs see CRAR Turkey.**De-icing**

Not AVBL

Changes: Nil

Effective 15-SEP-2016

08-SEP-2016

GZP-LTFG

Turkey Alanya Gazipasa

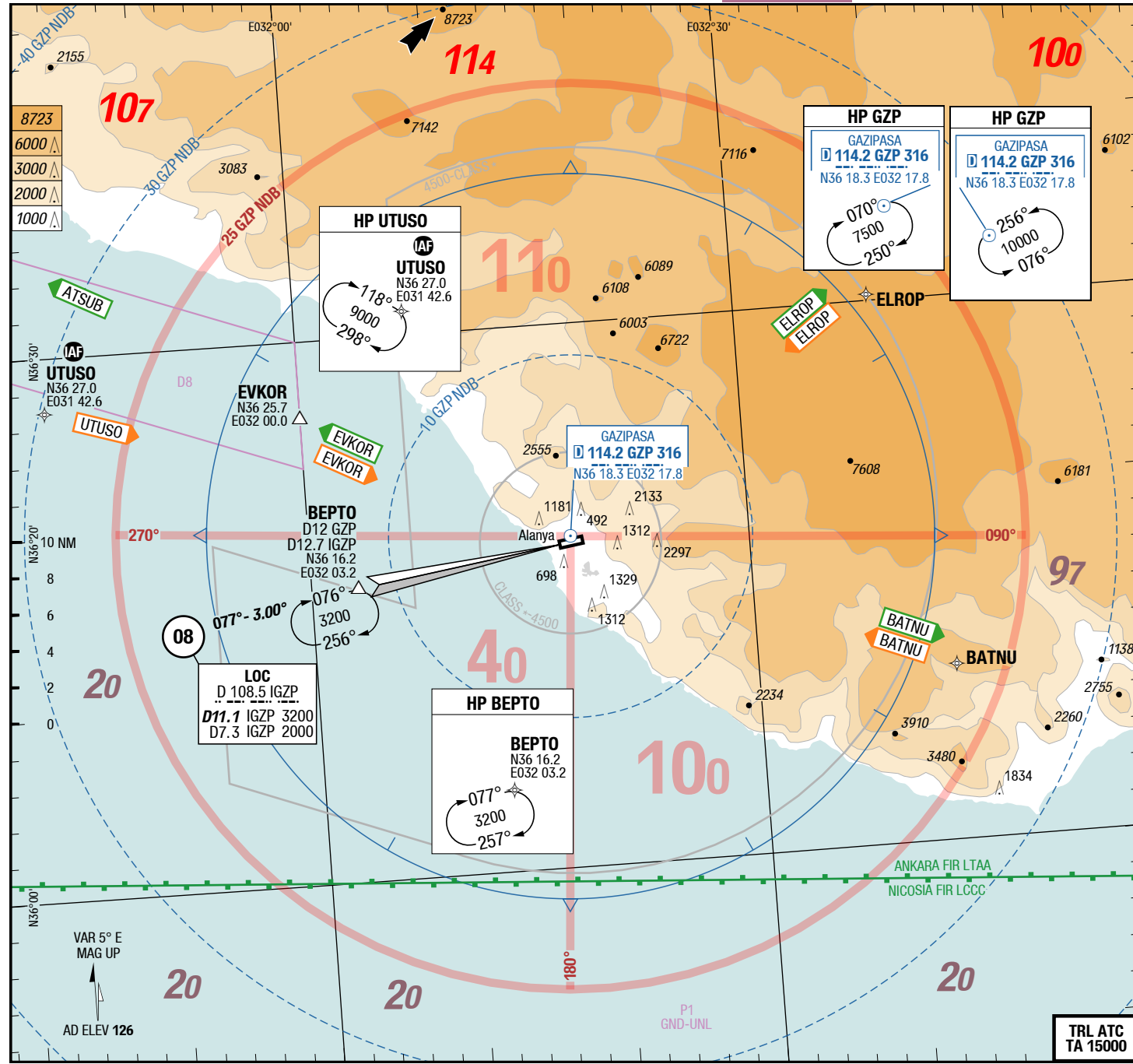
AGC
AFC

AFC
AFC

Gazipasa Alanya Turkey

AGC
AFC

2-10



ATIS	120.950
Antalya APP	120.225
	126.025
Gazipasa TWR	119.250
	122.800
GND	121.800

Landing RWY system:

08

HL-SF 420

not usable for landing

60 HL

15 HL

3.0°

3.0°

TDZ ---% +1.0%

TDZ ---% -1.0%

126 / 5hPa

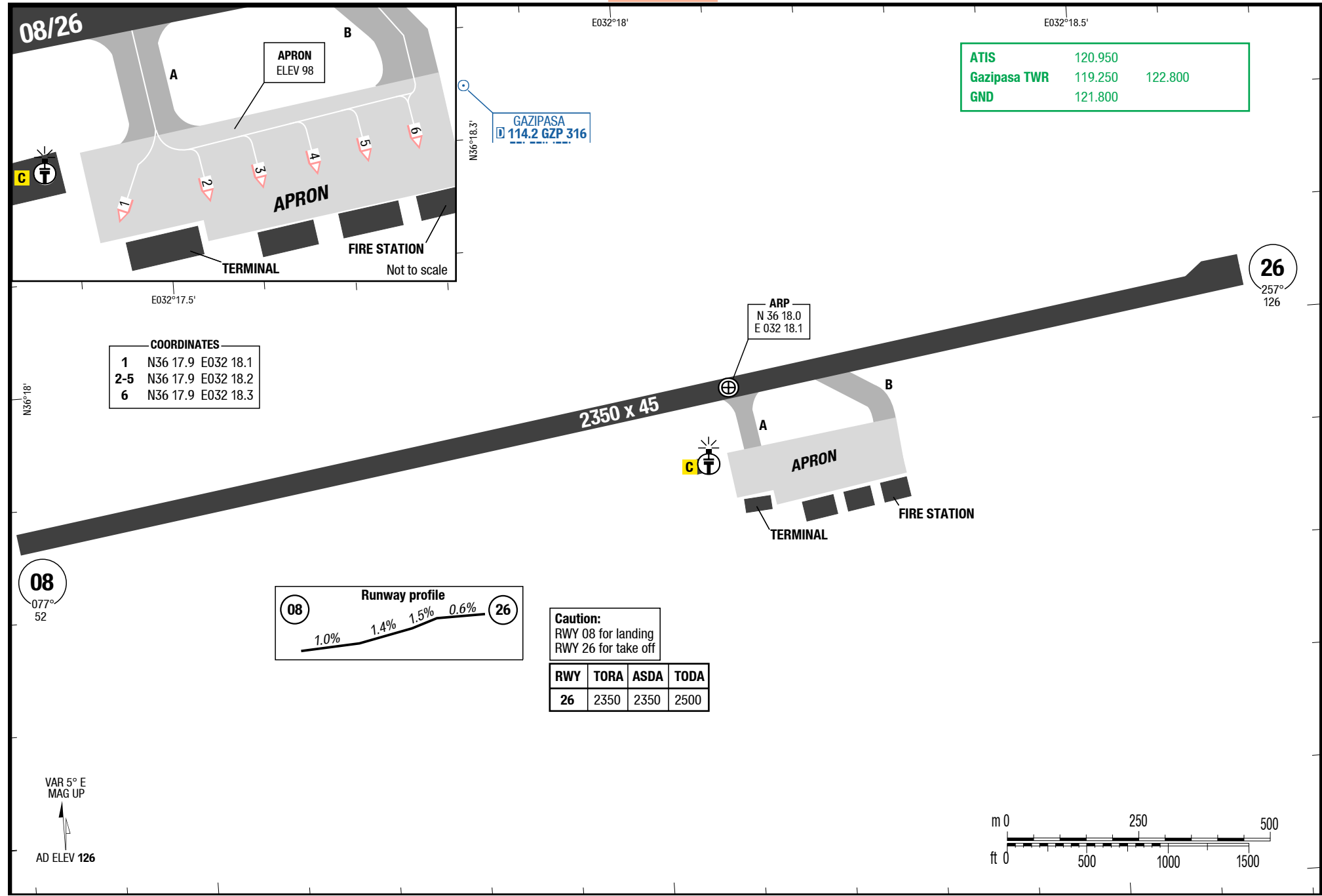
26

Changes: FREQ

THIS CHART IS A PART OF NAVIGRAPH CHARTS AND IS INTENDED FOR FLIGHT SIMULATION USE ONLY

© Lido 2016

3-20



Effective 15-OCT-2015

08-OCT-2015

GZP-LTFG

4-10

Turkey Alanya Gazipasa

SID RWY 26

RNAV SIDs RWY 26

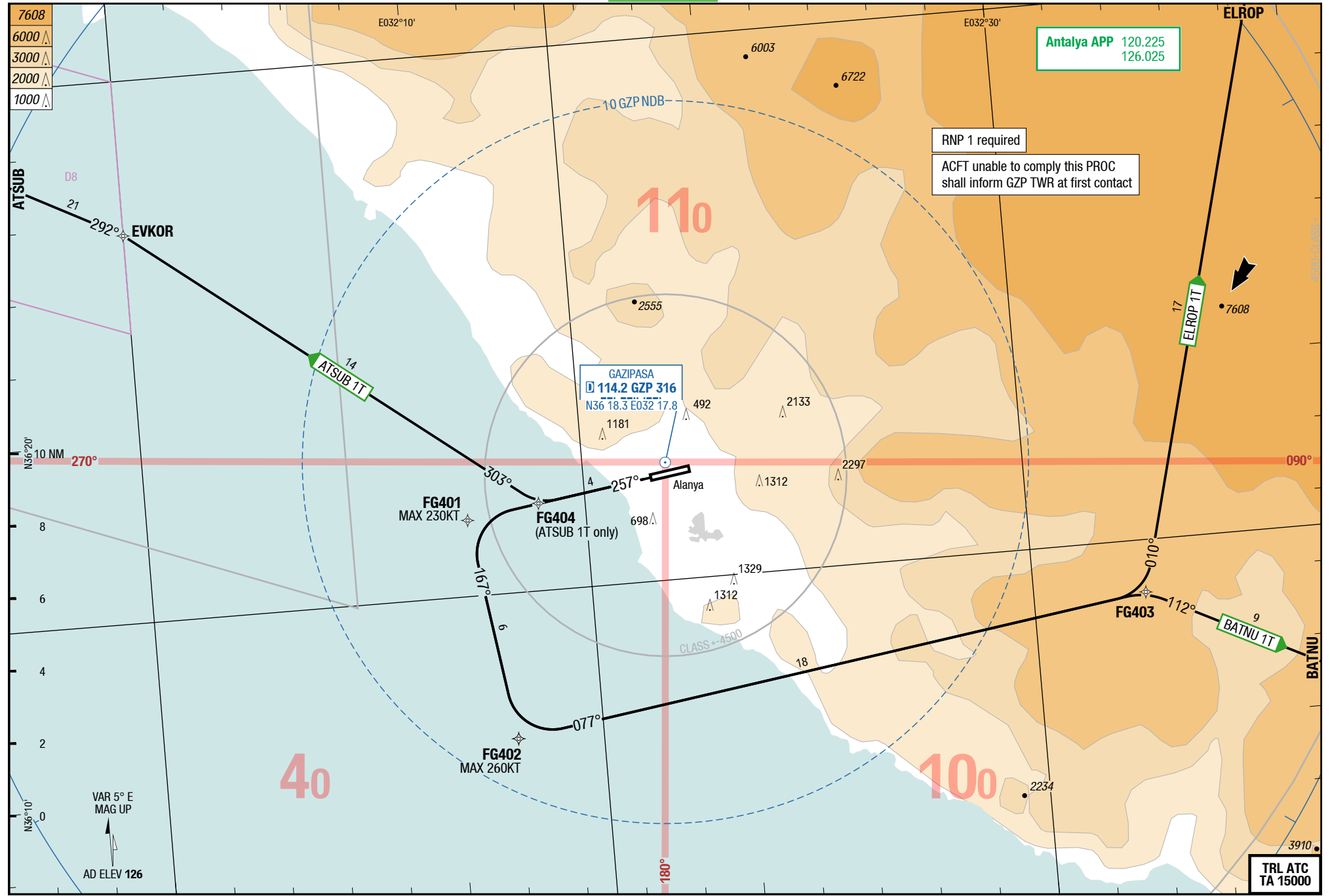
SID

SID

Gazipasa Alanya Turkey

SID RWY 26

RNAV SIDs RWY 26



Changes: OBST

THIS CHART IS A PART OF NAVIGRAPH CHARTS AND IS INTENDED FOR FLIGHT SIMULATION USE ONLY

© Lido 2015

Effective 15-OCT-2015

08-OCT-2015

GZP-LTFG

Turkey Alanya Gazipasa

Gazipasa Alanya Turkey

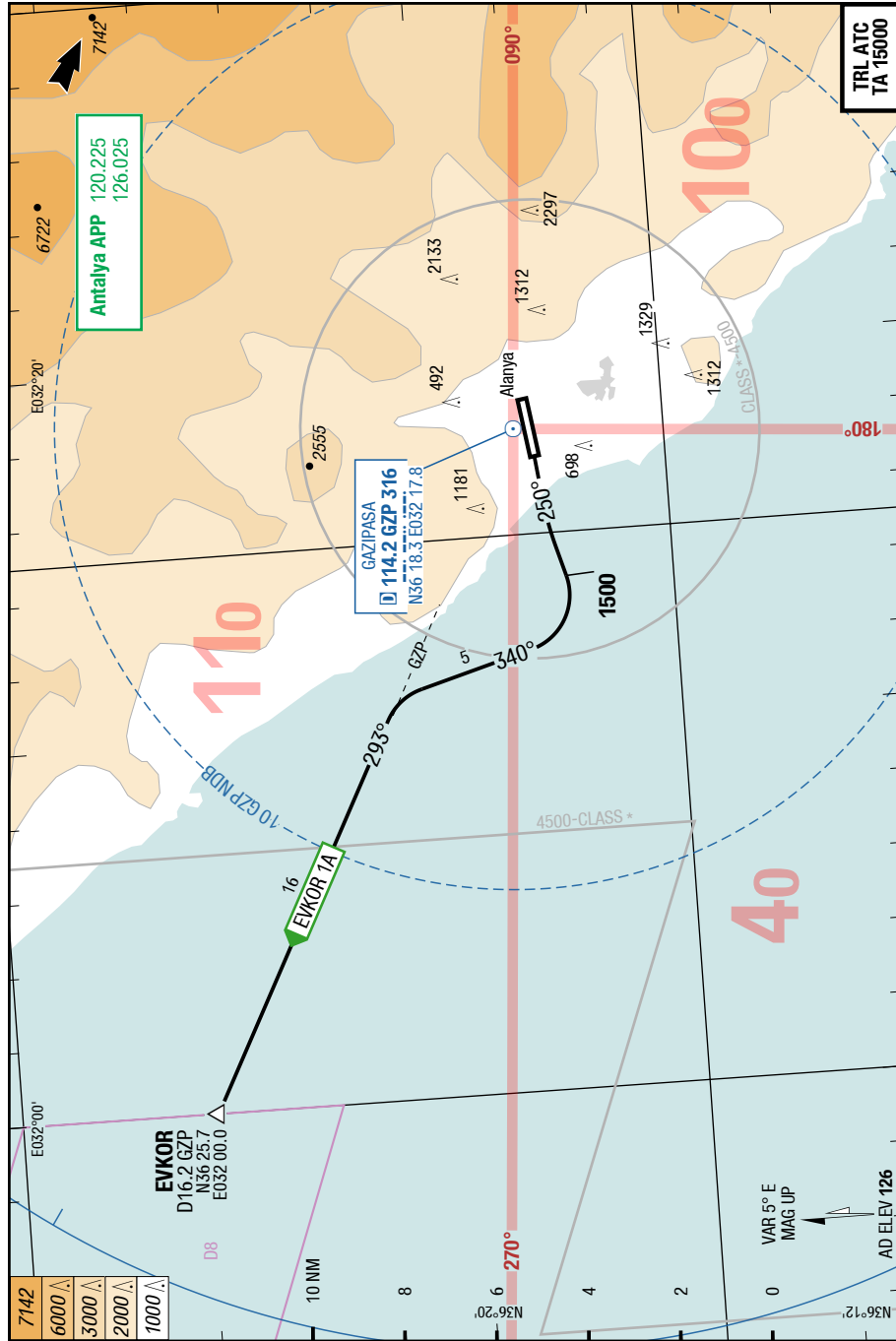
4-20

SID RWY 26

SID

SID

SID RWY 26



Changes: Nil

THIS CHART IS A PART OF NAVIGRAPH CHARTS AND IS INTENDED FOR FLIGHT SIMULATION USE ONLY

ATSUB 1T / BATNU 1T / ELROP 1T

RWY 26 (257°)

	GS	120	150	180	210	240	270
4.7%	ft/MIN	600	800	900	1000	1200	1300

DESIGNATOR	ROUTING	ALTITUDES
	Runway 26	
ATSUB 1T 120.225 126.025	FG404 - RT to EVKOR - ATSUB FMS FG404 [R] - EVKOR [L] - ATSUB	
BATNU 1T 4.7% to 9000 120.225 126.025	FG401 (MAX 230KT) - LT to FG402 (MAX 260KT) - FG403 - RT to BATNU FMS FG401 [K230-; L] - FG402 [K260-; L] - FG403 [R] - BATNU	
ELROP 1T 4.7% to 11000 120.225 126.025	FG401 (MAX 230KT) - LT to FG402 (MAX 260KT) - FG403 - LT to ELROP FMS FG401 [K230-; L] - FG402 [K260-; L] - FG403 [L] - ELROP	

EVKOR 1A		
RWY 26 (257°)		
DESIGNATOR	ROUTING	ALTITUDES
	Runway 26	
EVKOR 1A 120.225 126.025	intercept QDR 250 GZP - at 1500 RT 340° - intercept QDR 293 GZP to EVKOR - join T336	

Effective 15-SEP-2016

08-SEP-2016

GZP-LTFG

6-10

Turkey Alanya Gazipasa

STAR

RNAV STARs RWY 08

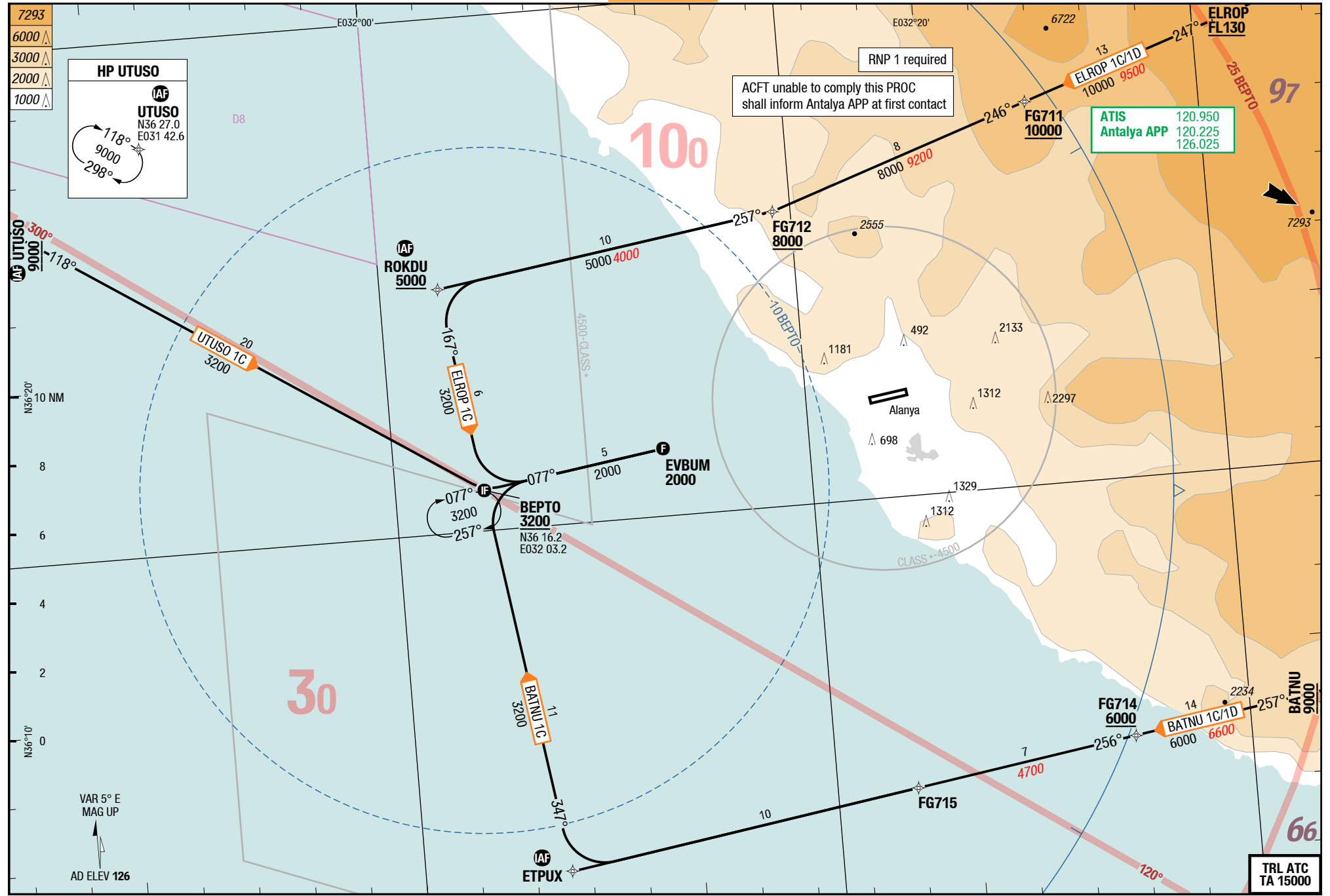
STAR

STAR

Gazipasa Alanya Turkey

STAR

RNAV STARs RWY 08



Changes: FREQ

THIS CHART IS A PART OF NAVIGRAPH CHARTS AND IS INTENDED FOR FLIGHT SIMULATION USE ONLY

© Lido 2016

Effective 15-SEP-2016

08-SEP-2016

GZP-LTFG

6-20

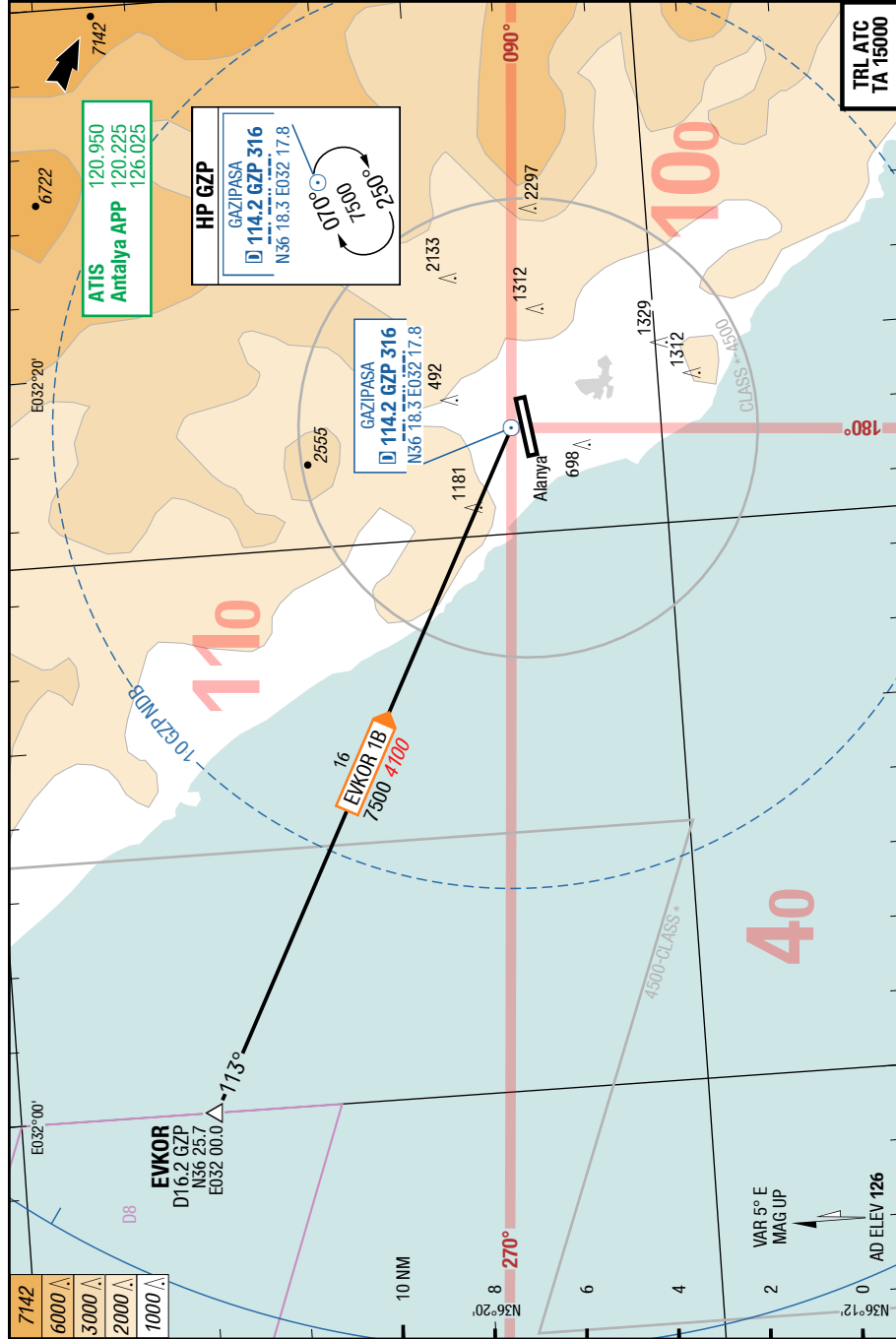
STAR

STAR

STAR

Gazipasa Alanya Turkey

STAR



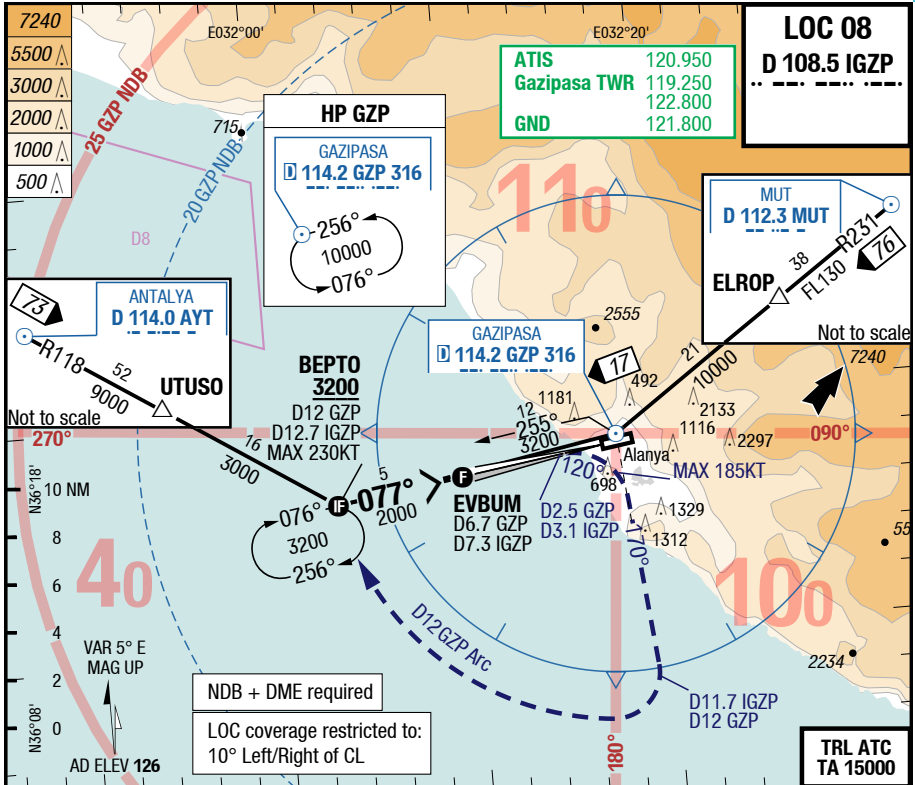
Changes: FREQ

THIS CHART IS A PART OF NAVIGRAPH CHARTS AND IS INTENDED FOR FLIGHT SIMULATION USE ONLY

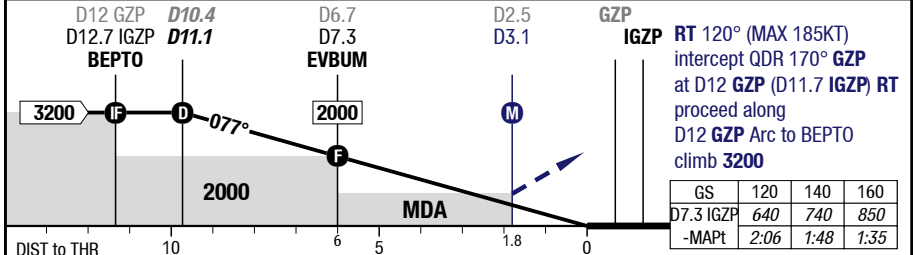
GZP-LTFG

7-10

LOC 08



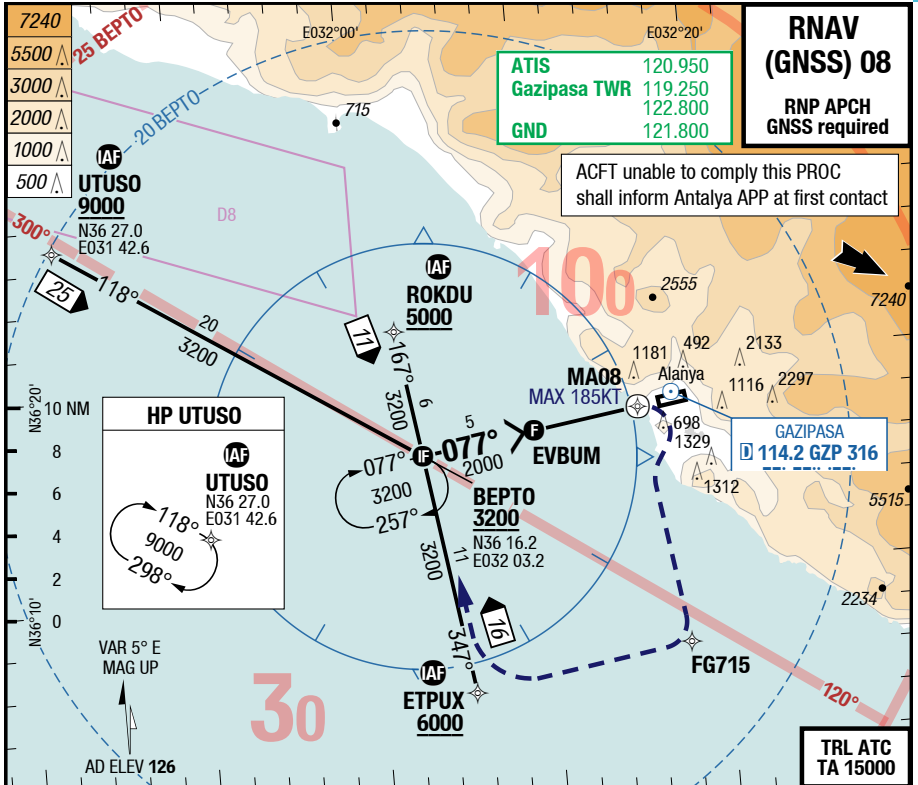
3.00° D IGZP	11.1	9	8	7	6	5	HL-SF	3.0° 2350 x 45 60 HL 15 HL	52 / 2hPa TDZ ---% +1.0%
	3200	2540	2220	1910	1590	1270			



08	C	ft - m/km ft	LOC DME GA 3.7%	LOC DME GA 3.7% APL U/S	LOC DME GA 2.5%	LOC DME GA 2.5% APL U/S	Circling 1)
			950 - 4.3V 1000	950 - 4.7V 1000	1150 - 5.0V 1200	1150 - 5.0V 1200	
08	D	ft - m/km ft	LOC DME GA 3.7%	LOC DME GA 3.7% APL U/S	LOC DME GA 2.5%	LOC DME GA 2.5% APL U/S	Circling 1)
			950 - 4.3V 1000	950 - 4.7V 1000	1150 - 5.0V 1200	1150 - 5.0V 1200	

1) S of AD only

Changes: FREQ



ATIS	120.950
Gazipasa TWR	119.250
GND	122.800
GND	121.800

RNAV (GNSS) 08
RNP APCH
GNSS required

ACFT unable to comply this PROC shall inform Antalya APP at first contact

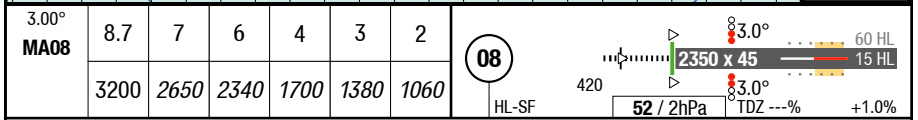
HP UTUSO

IAF
UTUSO
N36 27.0
E031 42.6

118°
9000
298°

GAZIPASA
D 114.2 GZP 316

TRL ATC
TA 15000



MA08[K185; R] - FG715 [R] - ETPUX [R] - BEPTO

at MA08 (MAX 185KT) RT to FG715
RT to ETPUX
RT to BEPTO
climb 3200

GS	120	140	160
EVBUM	640	740	850
-MAPt	NA	NA	NA

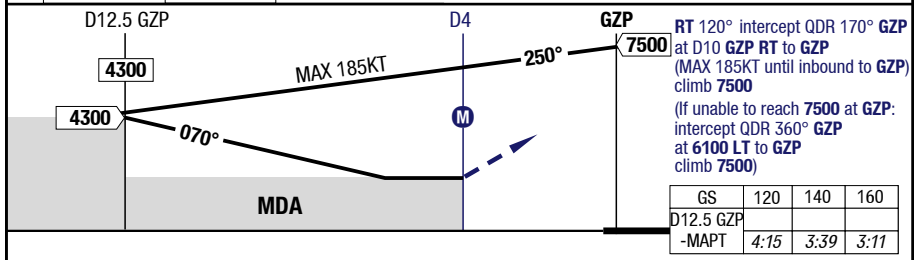
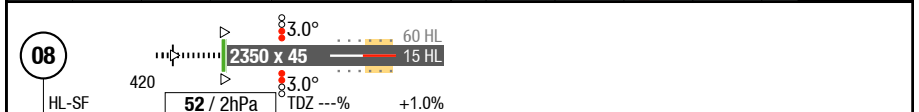
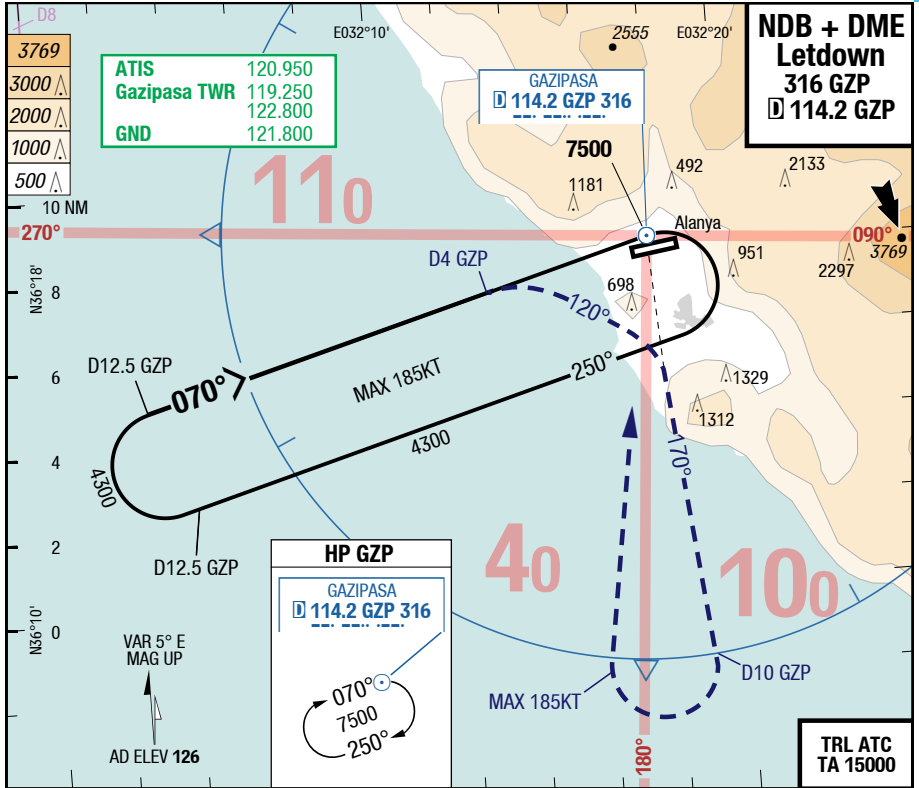
08		RNP LNAV GA 4.0%	RNP LNAV GA 4.0% APL U/S	RNP LNAV GA 2.5%	RNP LNAV GA 2.5% APL U/S	Circling
C	ft - m/km ft	950 - 4.3V 1000	950 - 4.7V 1000	1150 - 5.0V 1200	1150 - 5.0V 1200	2780 - 5.0V 2900
D	ft - m/km ft	950 - 4.3V 1000	950 - 4.7V 1000	1150 - 5.0V 1200	1150 - 5.0V 1200	3880 - 5.0V 4000

Changes: Completely revised

GZP-LTFG

7-50

NDB + DME Letdown



08/26	Letdown NDB DME GZP			Circling 1)
	C	ft - m/km ft	Straight-in Not authorized	
D	ft - m/km ft	Straight-in Not authorized	3880 - 5.0V 4000	

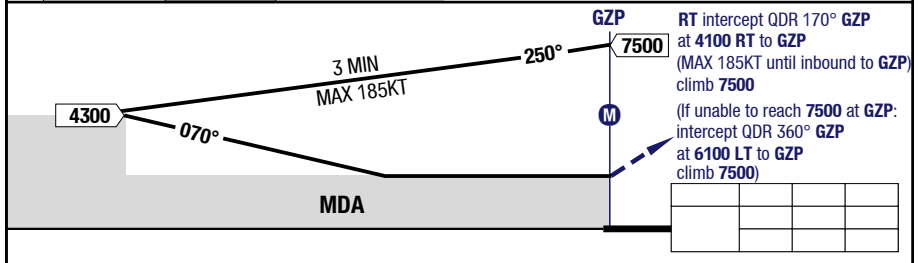
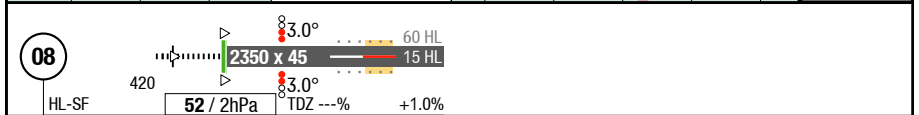
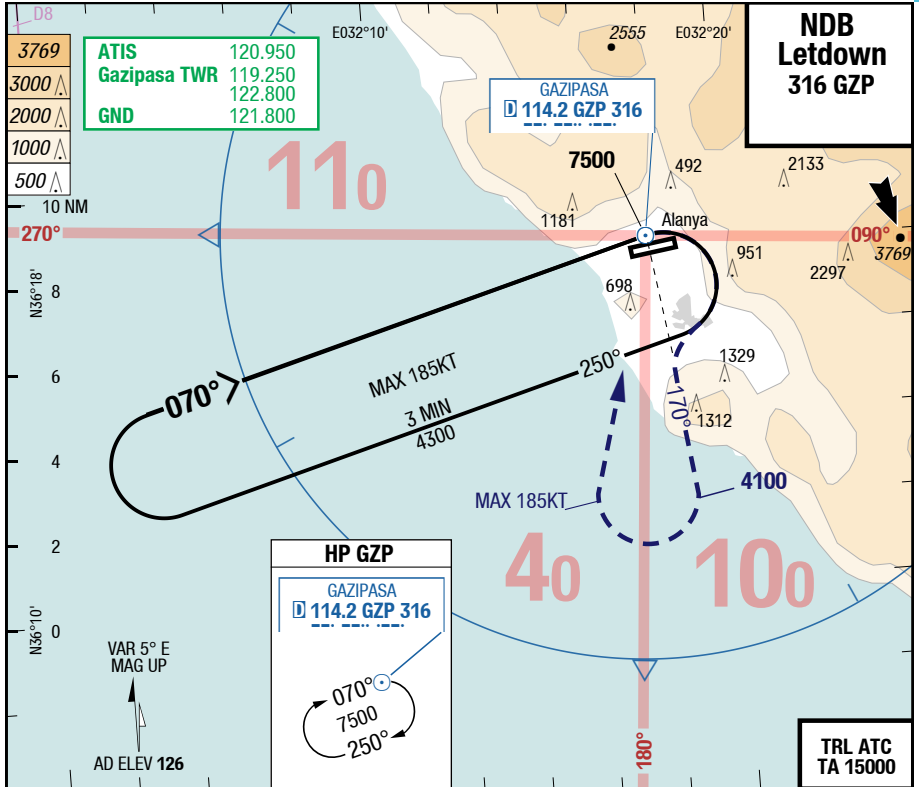
1) S of AD only

Changes: FREQ

GZP-LTFG

7-60

NDB Letdown



08/26		Letdown NDB				Circling ¹⁾
C	ft - m/km ft	Straight-in Not authorized				2780 - 5.0V 2900
D	ft - m/km ft	Straight-in Not authorized				3880 - 5.0V 4000

1) S of AD only

Changes: FREQ