

GENERAL

ATS Hours

H24

Airport Information

RFF: CAT 7

PCN: RWY 05/23: 110/R/C/W/T

Customs: O/R

Operation

TWY Restriction

TWY B width 18m / 59ft.

Engine Run-up Areas

ENG test area located 1340m / 4396ft from RWY 05 THR. ENG test only with nose in line with RWY 23 direction.

Warnings

EDR VOR/DME unusable: Between R300-R020 beyond 15NM below 12000ft.

EDR NDB unusable: Between 300°-360° beyond 8NM.

Birds in vicinity of AD.

ARRIVAL

Speed

MAX IAS 250KT within TMA at or below FL100 (refer to RFCs).

DEPARTURE

Take-off Minima

RWY		05/23	
All ACFT	ft - m/km	0 - 500R/500V	-

Speed

MAX IAS 250KT within TMA at or below FL100 (refer to RFCs).

ATC Slot, Clearance

Start-up: For start-up PROCs see CRAR Turkey.

De-Icing

Not AVBL

Effective 28-APR-2016

21-APR-2016

EDO-LTFD

2-10

Turkey **Balikesir** Koca Seyit

AGC

AFC

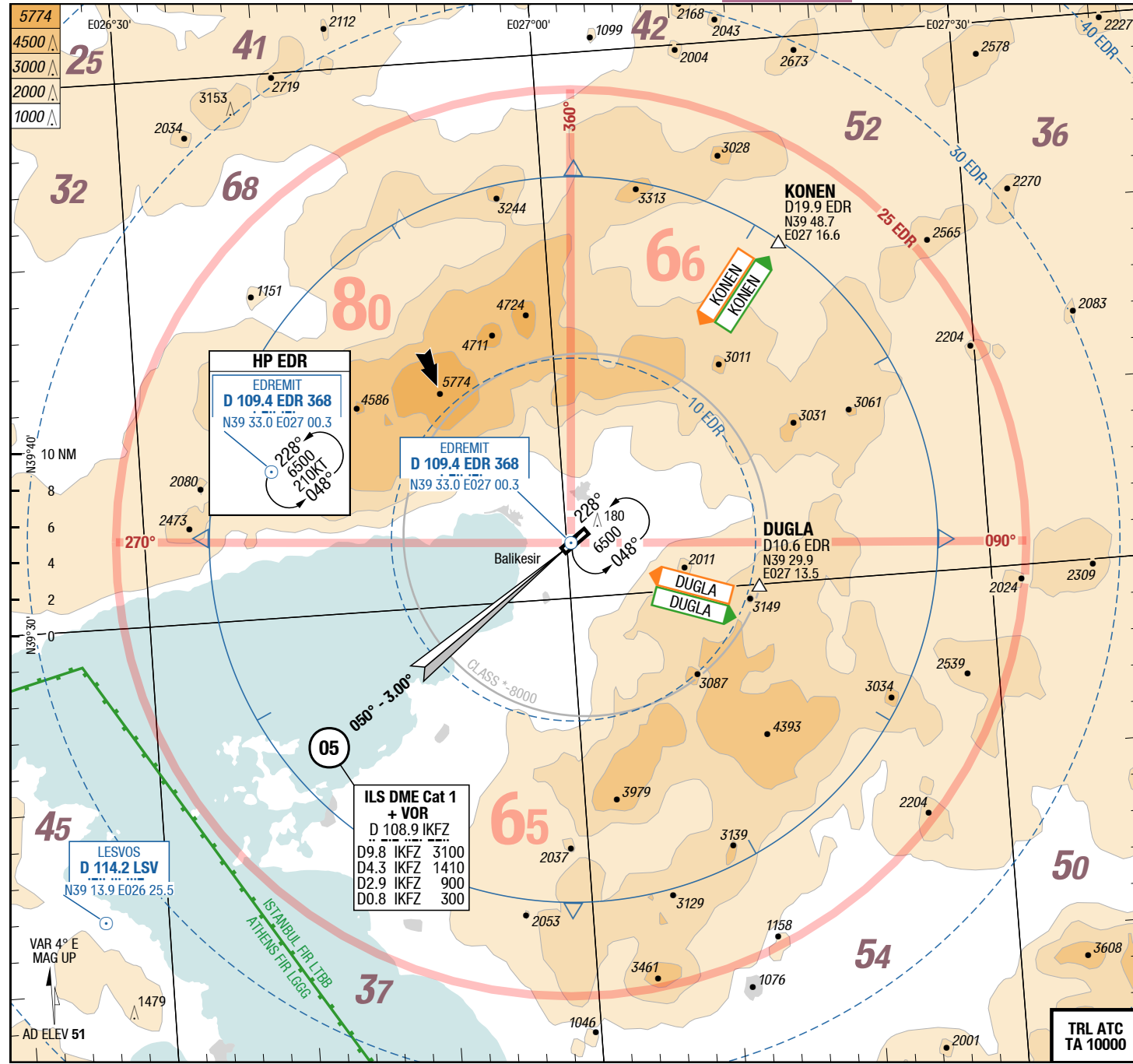
AFC

AFC

Koca Seyit **Balikesir** Turkey

AGC

AFC



Edremit TWR 119.700 HO
126.850
GND 121.900 HO

Landing RWY system:
Flashing LGT 600m

05 HL-P1F 37 / 1hPa TDZ ---% +0.1%

60 HL 3.0° 3000 x 45 60 HL

3.0° 45 x 2700 300 540

-0.1% TDZ ---% 47 / 2hPa HL-S **23**

Changes: Nil

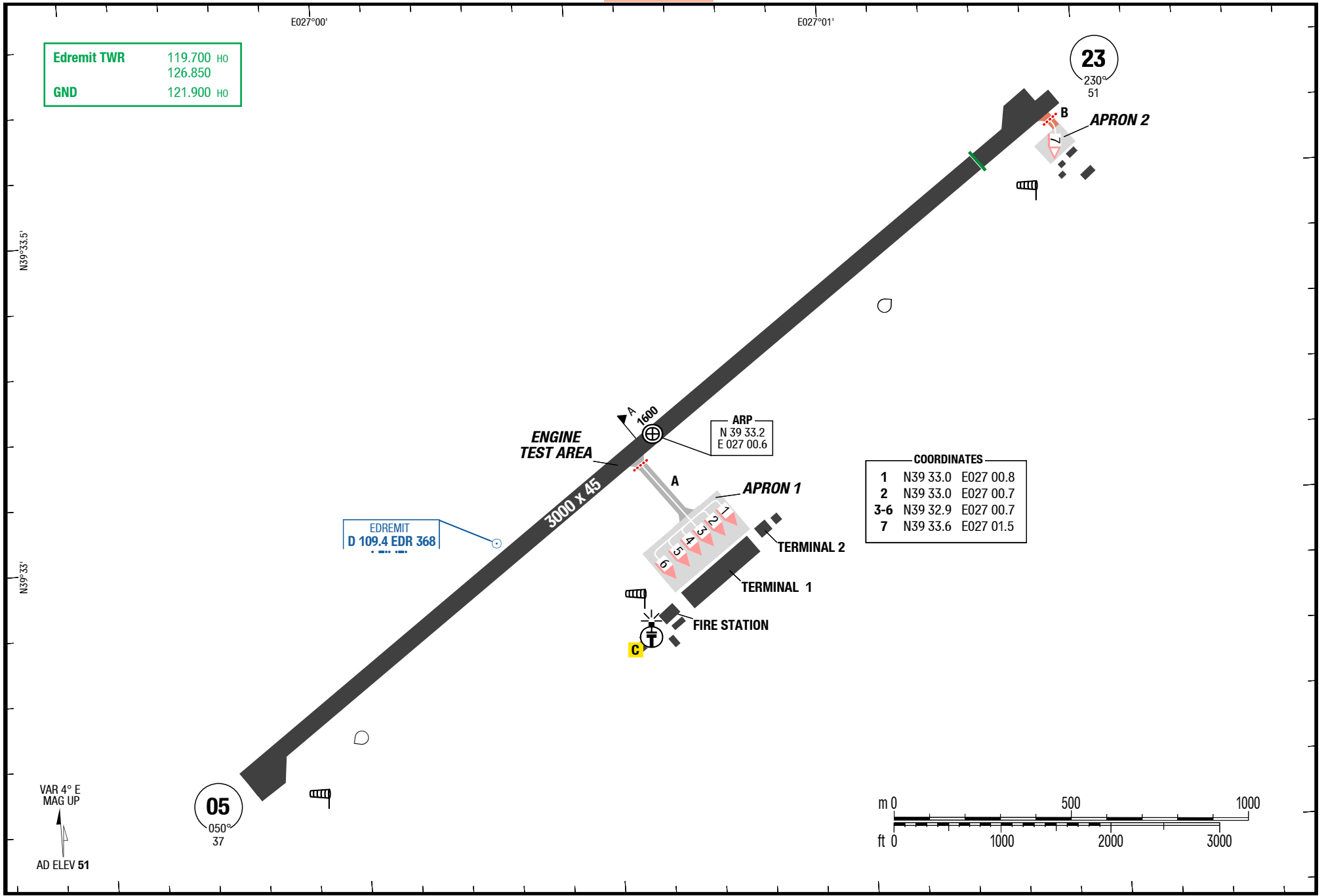
THIS CHART IS A PART OF NAVIGRAPH CHARTS AND IS INTENDED FOR FLIGHT SIMULATION USE ONLY

© Lido 2016

3-20

Edremit TWR	119.700 HO
	126.850
GND	121.900 HO

23
230°
51



COORDINATES

1	N39 33.0	E027 00.8
2	N39 33.0	E027 00.7
3-6	N39 32.9	E027 00.7
7	N39 33.6	E027 01.5

Changes: WDI, Turning bay, RWY ELEV

Effective 07-JAN-2016

31-DEC-2015

EDO-LTFD

4-10

Turkey **Balikesir** Koca Seyit

SIDs RWY 23

SIDs RWY 05

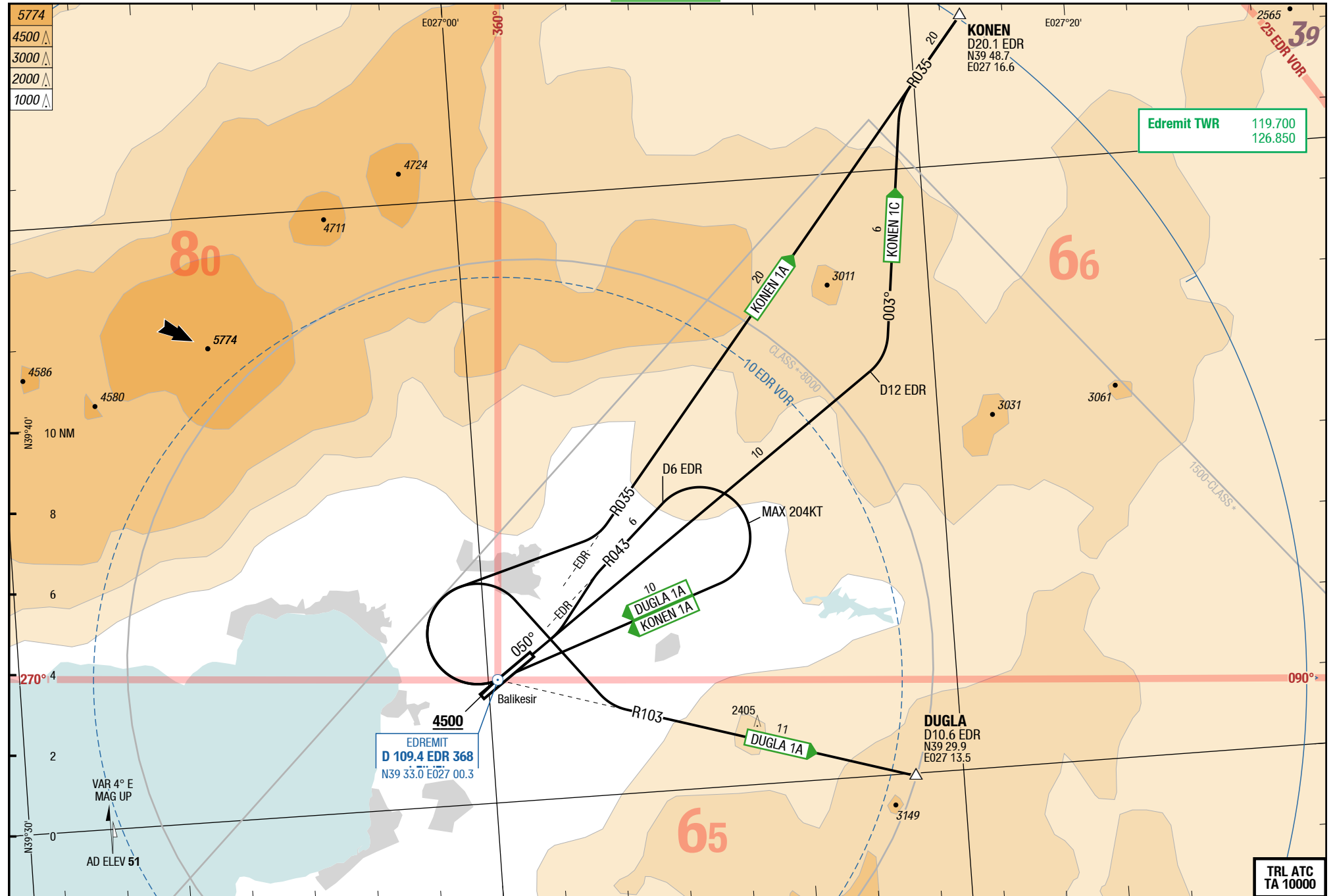
SID

SID

Koca Seyit **Balikesir** Turkey

SIDs RWY 23

SIDs RWY 05



Changes: PROC, chart layout, OBST

THIS CHART IS A PART OF NAVIGRAPH CHARTS AND IS INTENDED FOR FLIGHT SIMULATION USE ONLY

TRL ATC
TA 10000

© Lido 2015

Effective 07-JAN-2016

31-DEC-2015

EDO-LTFD

Turkey **Balikesir** Koca Seyit

SID

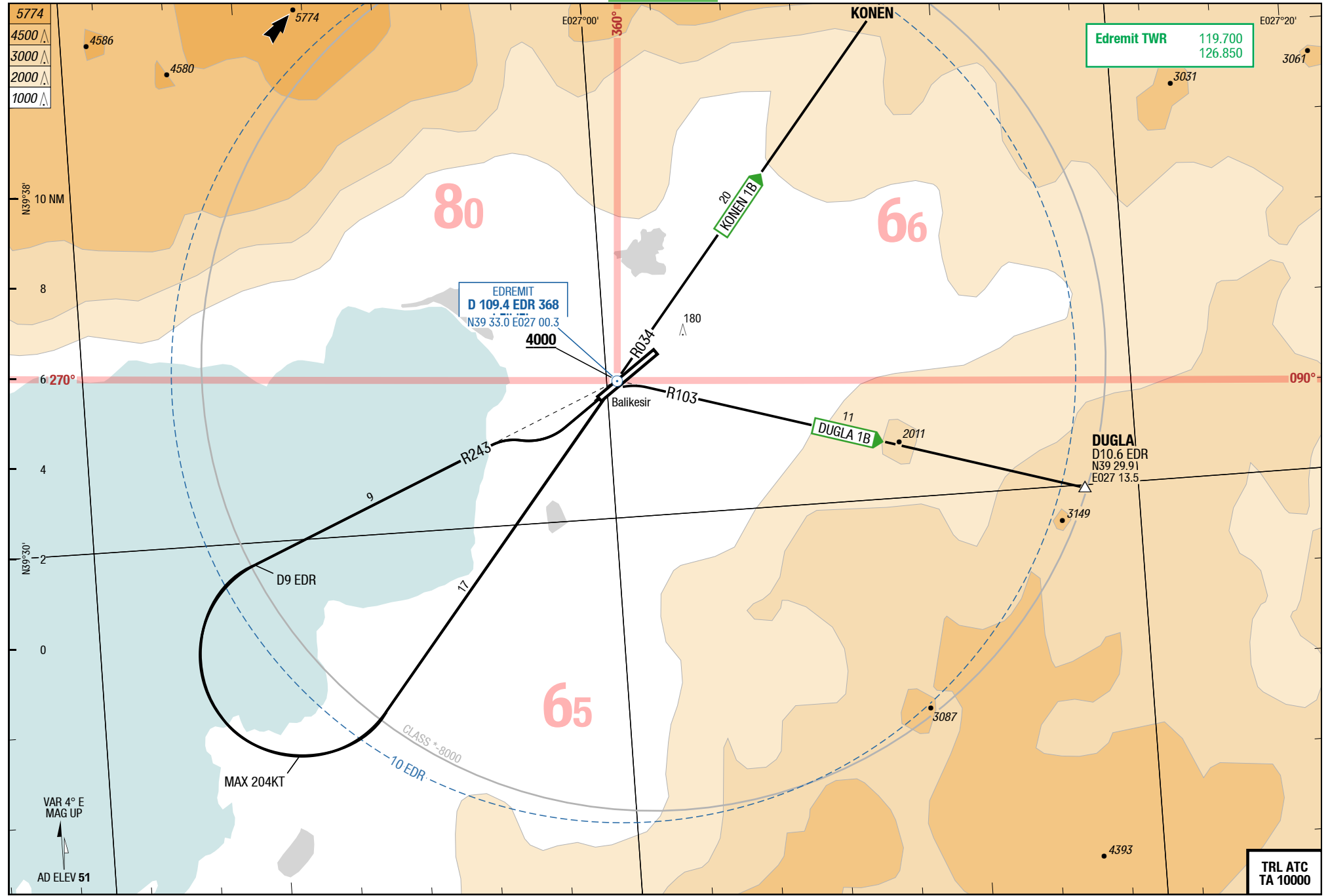
SID

Koca Seyit **Balikesir** Turkey

SIDs RWY 23

SIDs RWY 23

4-20



Changes: Nil

THIS CHART IS A PART OF NAVIGRAPH CHARTS AND IS INTENDED FOR FLIGHT SIMULATION USE ONLY

TRL ATC
TA 10000

© Lido 2015

DUGLA 1A / KONEN 1A / KONEN 1C

RWY 05 (050°)

	GS	120	150	180	210	240	270
5.7%	ft/MIN	700	900	1100	1300	1400	1600
6.0%	ft/MIN	800	1000	1100	1300	1500	1700

DESIGNATOR	ROUTING	ALTITUDES
	Runway 05	
DUGLA 1A 5.7% to 4500 119.700	intercept R043 EDR (QDR 043 EDR) - at D6 EDR RT (MAX 204KT) direct EDR - RT intercept R103 EDR (QDR 103 EDR) to DUGLA	EDR MNM 4500
KONEN 1A 5.7% to 4500 119.700	intercept R043 EDR (QDR 043 EDR) - at D6 EDR RT (MAX 204KT) direct EDR - RT intercept R035 EDR (QDR 035 EDR) to KONEN	EDR MNM 4500
KONEN 1C 6.0% to 5000 119.700	intercept R050 EDR (QDR 050 EDR) - at D12 EDR LT 003° - RT intercept R035 EDR (QDR 035 EDR) to KONEN	

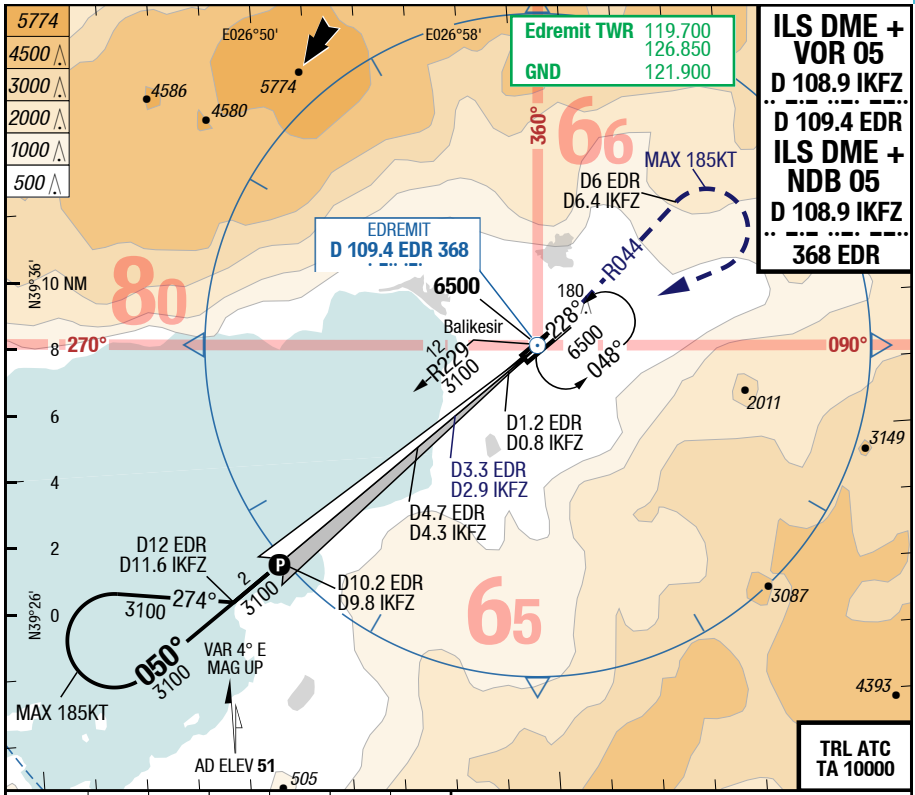
DUGLA 1B / KONEN 1B
RWY 23 (230°)

DESIGNATOR	ROUTING	ALTITUDES
	Runway 23	
DUGLA 1B 119.700	intercept R243 EDR (QDR 243 EDR) - at D9 EDR LT (MAX 204KT) direct EDR - R103 EDR (QDR 103 EDR) to DUGLA	EDR MNM 4000
KONEN 1B 119.700	intercept R243 EDR (QDR 243 EDR) - at D9 EDR LT (MAX 204KT) direct EDR - R034 EDR (QDR 034 EDR) to KONEN	EDR MNM 4000

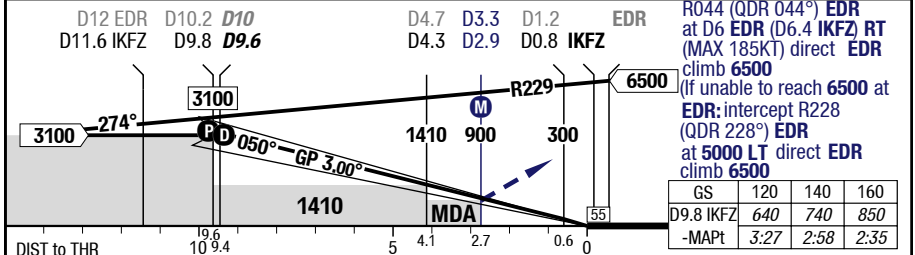
EDO-LTFD

7-10

ILS DME + VOR 05 / ILS DME + NDB 05



LOC 3.00°	9.6	7	6	5	4	3	Flashing LGT 600m	3.0°	60 HL
D IKFZ	3100	2270	1950	1630	1310	990	05	3000 x 45	
							HL-P1F	37 / 1hPa	TDZ ---% +0.1%



05		Cat 1 DME GA 4.5% ¹⁾	Cat 1 DME GA 2.5% ²⁾	LOC DME ³⁾	Circling S of AD only
C	ft - m/km ft	230 - 550 270	820 - 2.4 860	870 - 2.4 900	1450 - 2.4V 1500
D	ft - m/km ft	230 - 550 270	820 - 2.4 860	870 - 2.4 900	2650 - 3.6V 2700

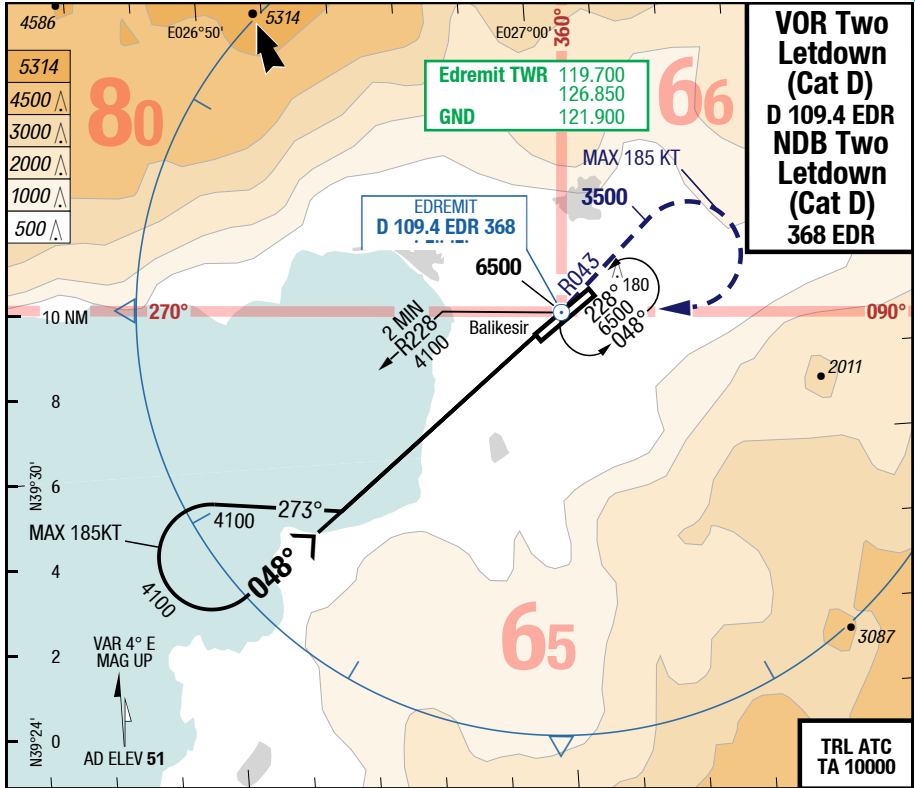
1) FD, AP or HGS required, else RVR 750m
2) With EVS 1.6km
3) Timing to determine MAPt NA

Changes: MIN

EDO-LTFD

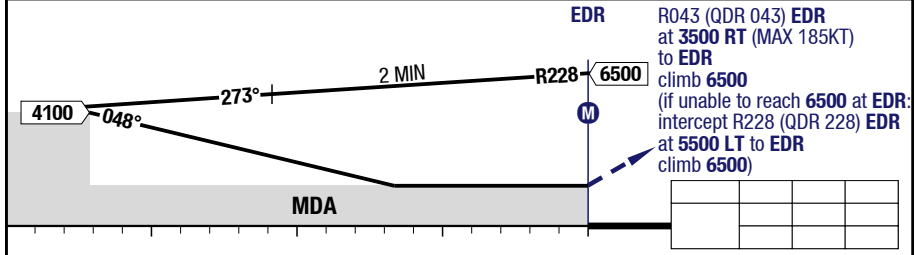
7-40

VOR Two Letdown / NDB Two Letdown



VOR Two Letdown (Cat D)
D 109.4 EDR
NDB Two Letdown (Cat D)
368 EDR

TRL ATC TA 10000



All RWYs		Letdown VOR/NDB					Circling ¹⁾
C	ft - m/km ft	Not applicable					Not applicable
D	ft - m/km ft	Straight-in Not authorized					2650 - 5.0V 2700

1) S of AD only

Changes: THR ELEV