

GENERAL

ATS Hours

See NOTAM.

Airport Information

RFF: CAT 8

PCN: RWY 05/23: 120/R/D/W/T

Warnings

Dust/Sand whirls must be expected in vicinity of AD.

Birds in vicinity of AD.

ARRIVAL

Speed

MAX IAS 250KT within TMA at or below FL100 (refer RFCs).

DEPARTURE

Take-off Minima

RWY		05/23	
All ACFT	ft - m/km	0 - 400R/400V	-

Speed

MAX IAS 250KT within TMA at or below FL100 (refer RFCs).

ATC Slot, Clearance

Start-up: For start-up PROCs see CRAR Turkey.

De-Icing

See NOTAM.

14-JUL-2016

ISE-LTFC

Turkey Isparta Suleyman Demirel

2-10

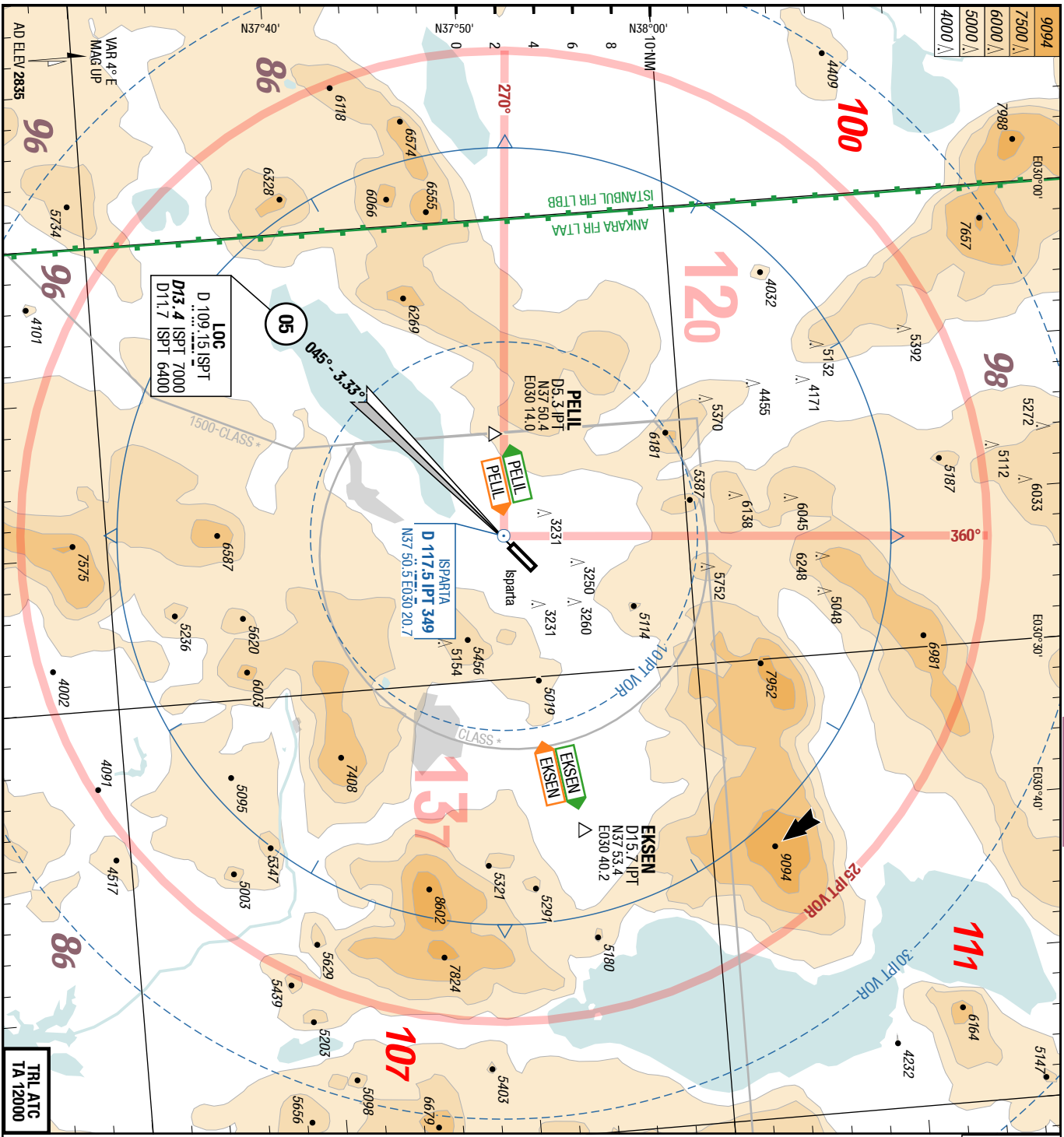
AGC AFC

AFC

AFC

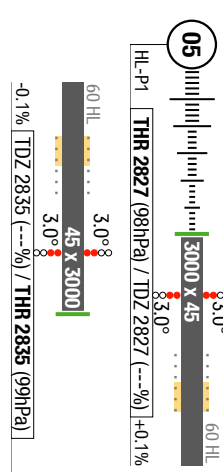
Suleyman Demirel Isparta Turkey

AGC AFC



Antalya APP 124.350
TWR 118.650 see NOTAM
 118.300 see NOTAM
 121.700 see NOTAM
GND

Landing RWY system:



TRL ATC TA 12000

Changes: APL

THIS CHART IS A PART OF NAVIGRAPH CHARTS AND IS INTENDED FOR FLIGHT SIMULATION USE ONLY

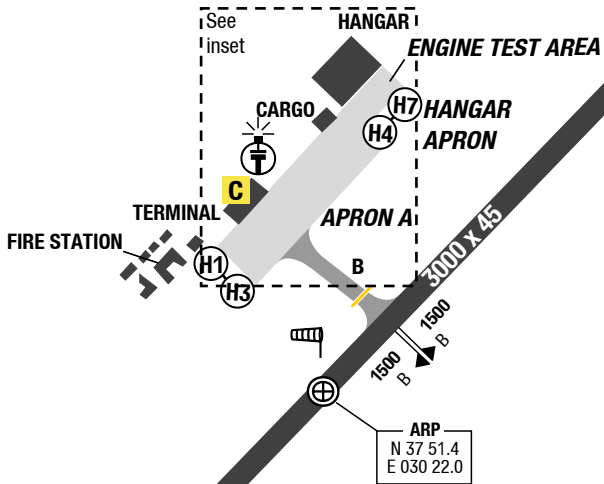
Changes: Nil

E030° 21.5' E030° 22' E030° 22.5' E030° 23'

TWR	118.650	see NOTAM
	118.300	see NOTAM
GND	121.700	see NOTAM

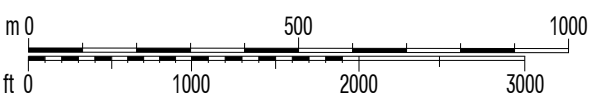
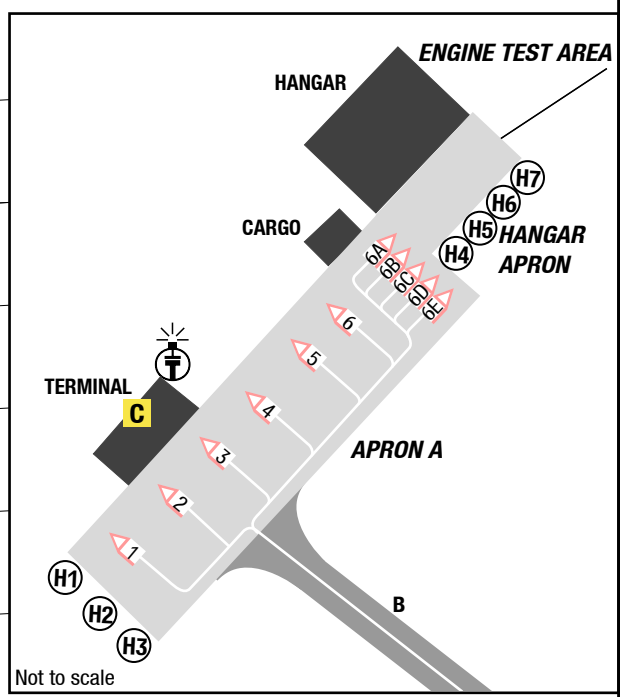
RWY	TORA	ASDA	TODA
05	3000	3060	3000
23	3000	3060	3000

ENGINE TEST AREA
23
 225°
 2835



COORDINATES

1-4	N37 51.5	E030 22.0
5-6E	N37 51.6	E030 22.1



N37° 52'

N37° 51.5'

N37° 51'

N37° 50.5'

05
 045°
 2827

VAR 4° E
 MAG UP
 AD ELEV 2835

THIS CHART IS A PART OF NAVIGRAPH CHARTS AND IS INTENDED FOR FLIGHT SIMULATION USE ONLY

Effective 07-JAN-2016

31-DEC-2015

ISE-LTFC

Turkey Isparta Suleyman Demirel

NIL

SIDs

SID

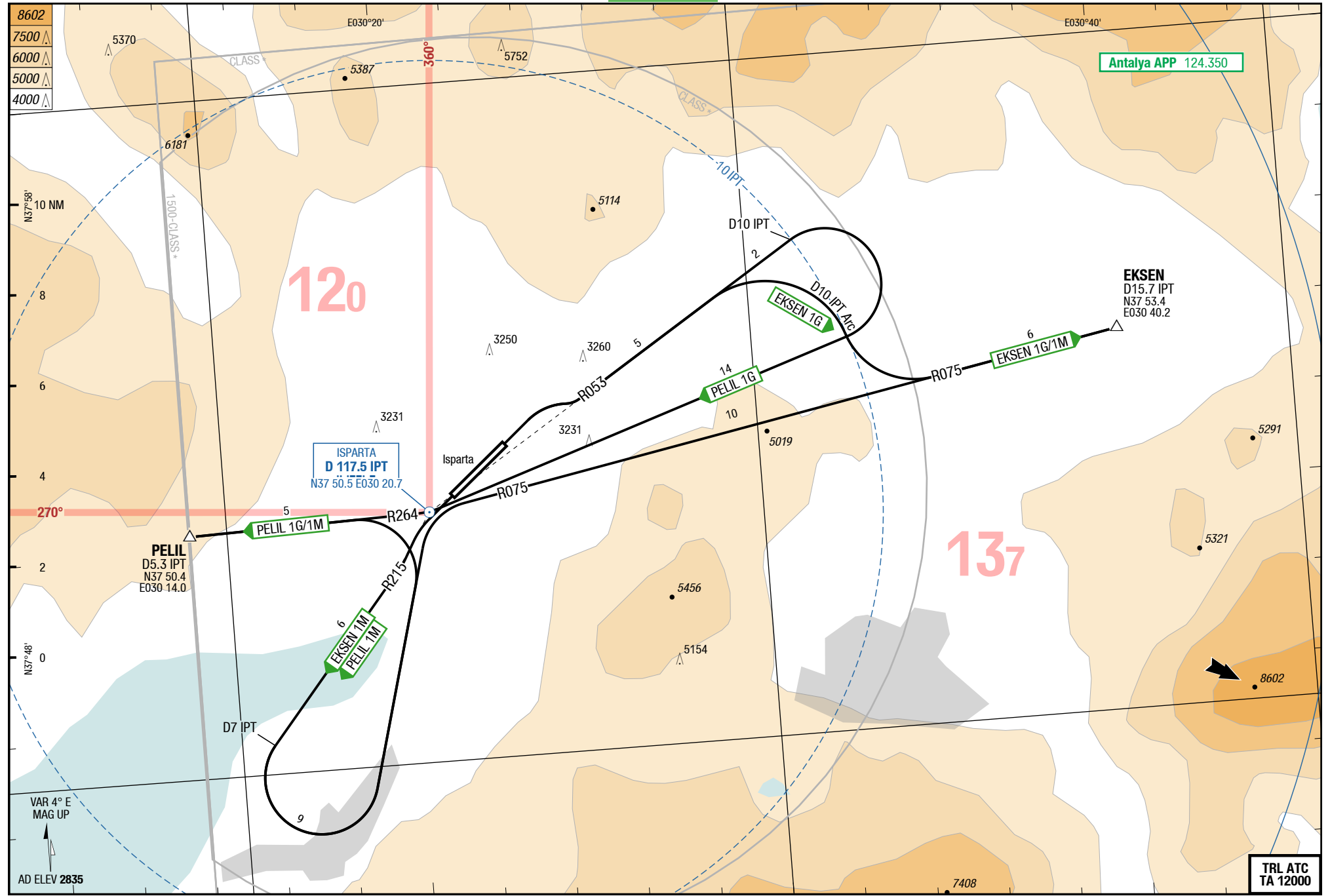
SID

Suleyman Demirel Isparta Turkey

NIL

SIDs

4-10



Changes: FREQ

THIS CHART IS A PART OF NAVIGRAPH CHARTS AND IS INTENDED FOR FLIGHT SIMULATION USE ONLY

TRL ATC TA 12000

© Lido 2015

EKSEN 1G / PELIL 1G / EKSEN 1M / PELIL 1M

RWYs 05 (045°) / 23 (225°)

	GS	120	150	180	210	240	270
5.0%	ft/MIN	700	800	1000	1100	1300	1400

DESIGNATOR	ROUTING	ALTITUDES
	Runway 05	
EKSEN 1G 5.0% to 11000 124.350	intercept R053 IPT - at D10 IPT RT follow D10 IPT arc - intercept R075 IPT to EKSEN	
PELIL 1G 5.0% to 9000 124.350	intercept R053 IPT - at D10 IPT RT direct IPT - intercept R264 IPT to PELIL	
	Runway 23	
EKSEN 1M 5.0% to 11000 124.350	intercept R215 IPT - at D7 IPT LT direct IPT - intercept R075 IPT to EKSEN	
PELIL 1M 5.0% to 9000 124.350	intercept R215 IPT - at D7 IPT LT direct IPT - intercept R264 IPT to PELIL	

Changes: FREQ

Effective 07-JAN-2016

31-DEC-2015

ISE-LTFC

Turkey Isparta Suleyman Demirel

NIL

STARs

STAR

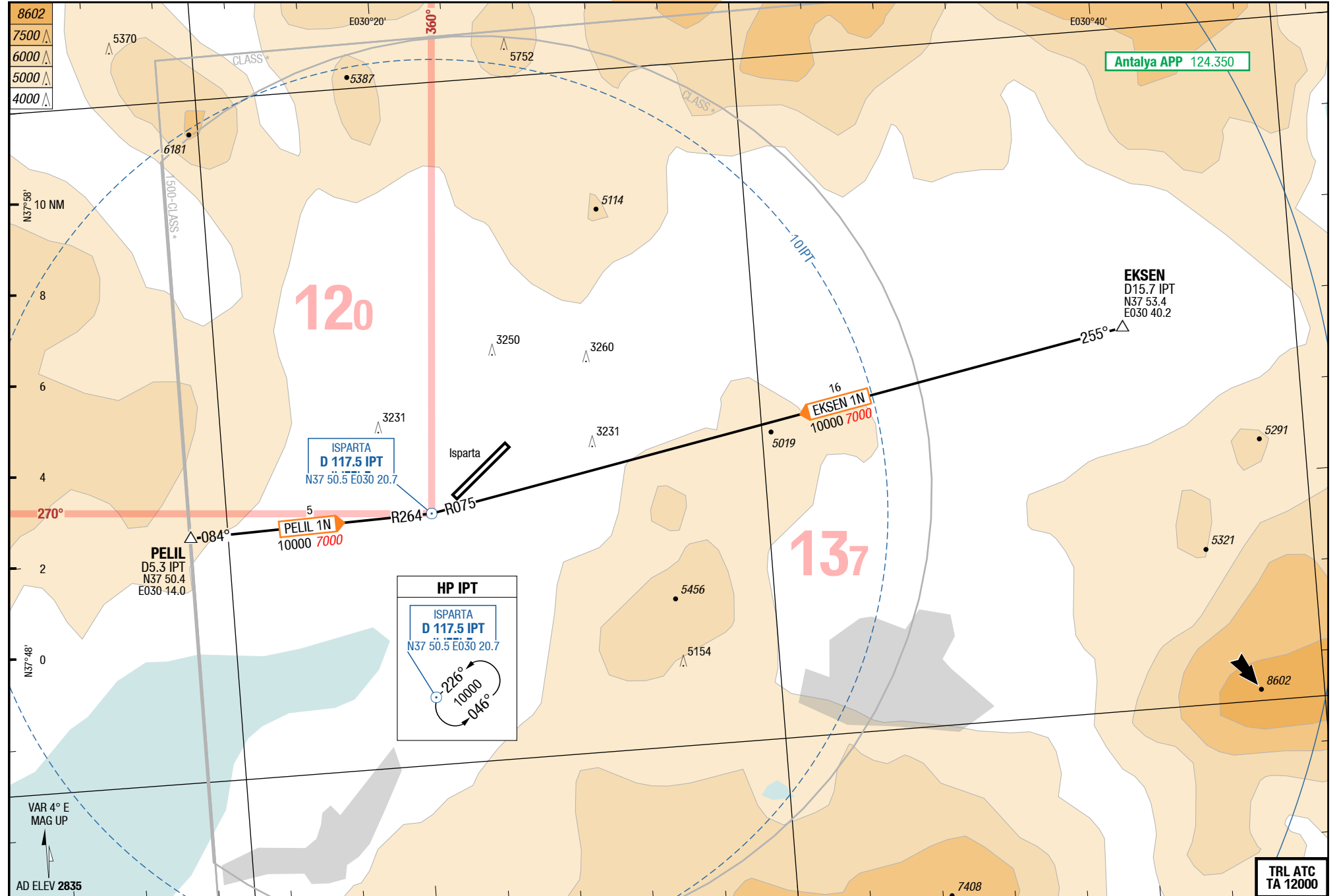
STAR

Suleyman Demirel Isparta Turkey

NIL

STARs

6-10



Changes: FREQ

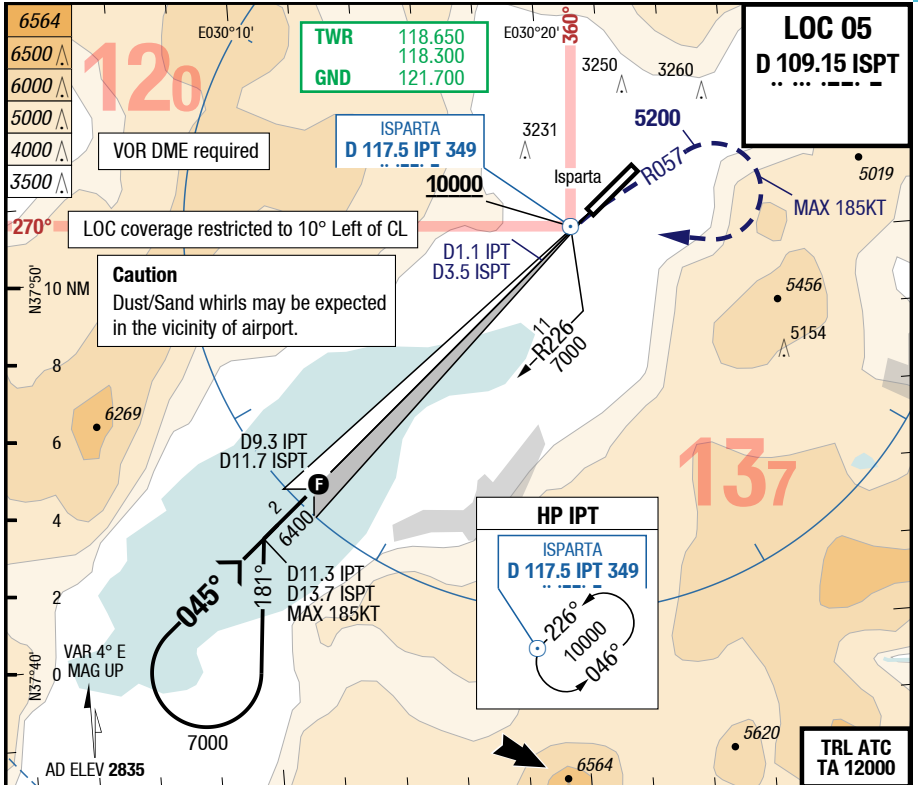
THIS CHART IS A PART OF NAVIGRAPH CHARTS AND IS INTENDED FOR FLIGHT SIMULATION USE ONLY

14-JUL-2016

ISE-LTFC

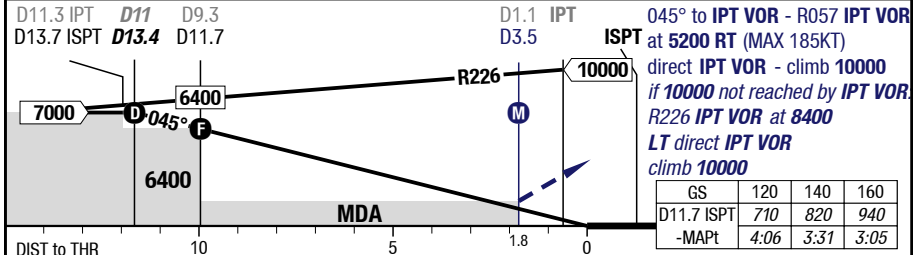
7-10

LOC 05



3.33°	13.4	12	10	8	6	5		83.0°	60 HL
D ISPT	7000	6510	5800	5100	4390	4040		3000 x 45	
								83.0°	

HL-P1 THR 2827 (98hPa) / TDZ 2827 (---%) +0.1%



05		LOC DME GA 3.5%	LOC DME GA 3.5% APL U/S	LOC DME GA 2.5%	LOC DME GA 2.5% APL U/S	Circling
C	ft - m/km ft	680 - 2.6V 3500	680 - 3.5V 3500	930 - 3.8V 3750	930 - 4.7V 3750	2620 - 5.0V 5450
D	ft - m/km ft	680 - 2.6V 3500	680 - 3.5V 3500	930 - 3.8V 3750	930 - 4.7V 3750	3070 - 5.0V 5900

Changes: APL, OBST, Navaid, DIST ALT table, ROD

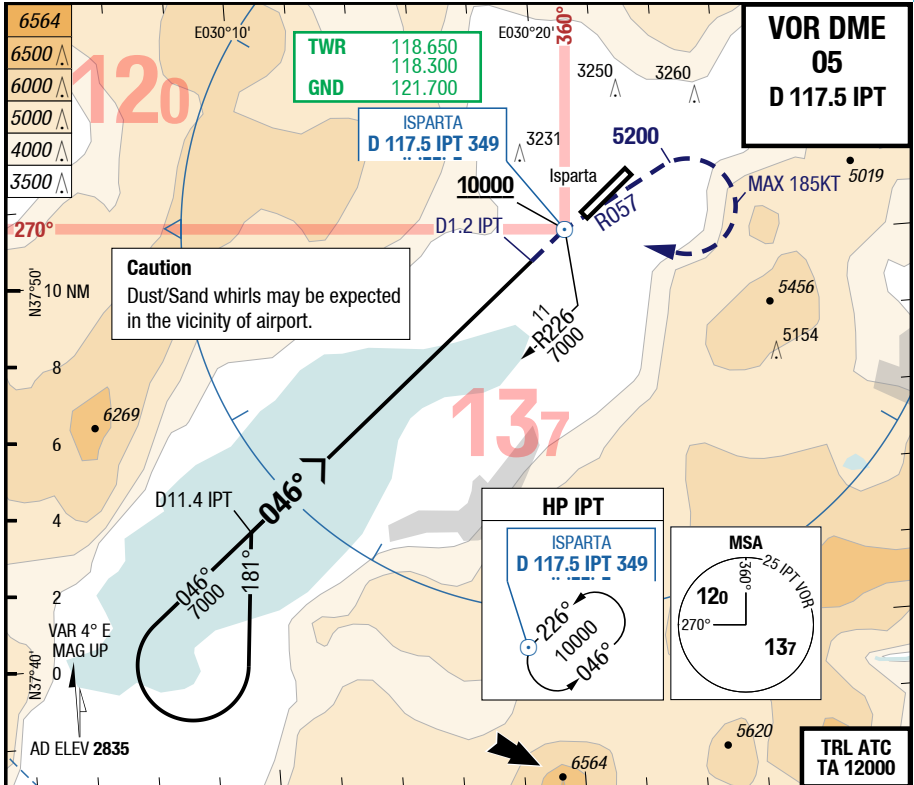
THIS CHART IS A PART OF NAVIGRAPH CHARTS AND IS INTENDED FOR FLIGHT SIMULATION USE ONLY

14-JUL-2016

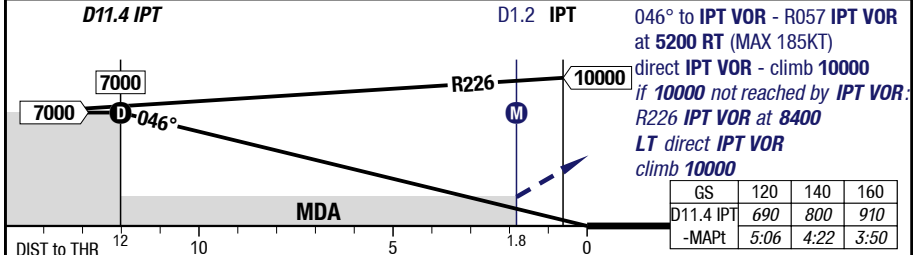
ISE-LTFC

7-20

VOR DME 05



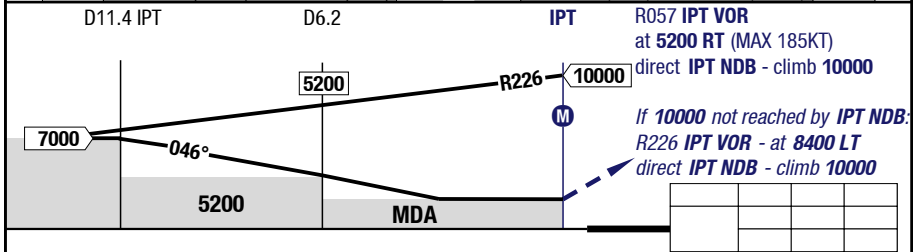
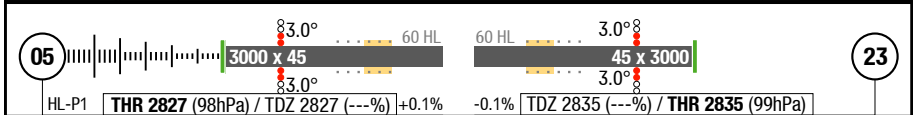
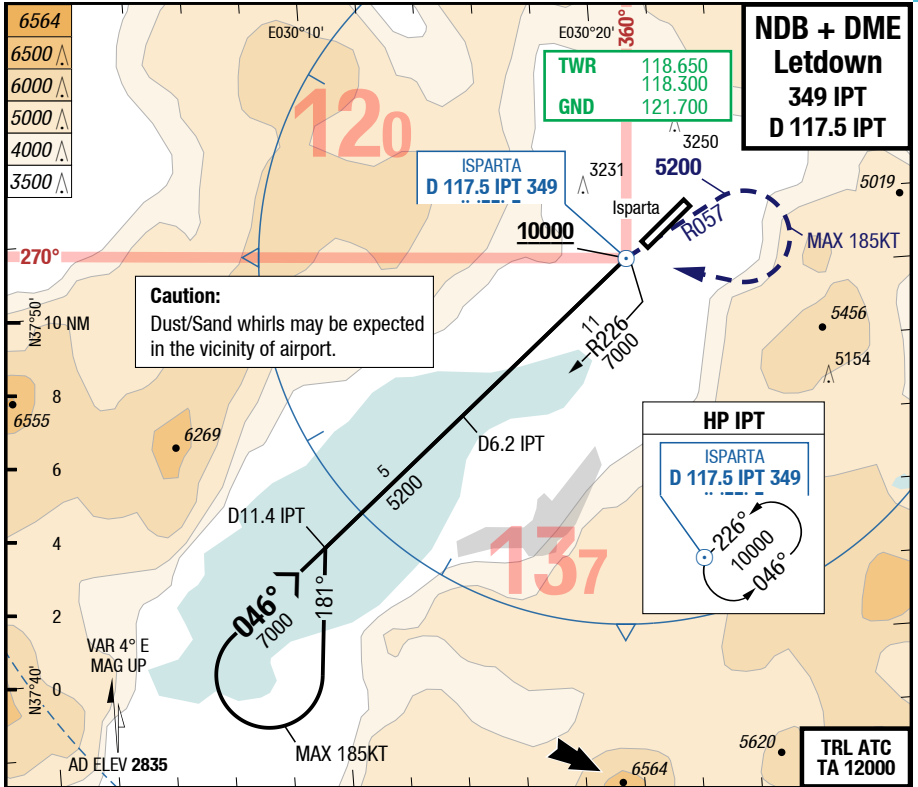
3.23°	11.4	10	8	6	4	3		3.0° 3000 x 45 3.0°	
D IPT 046°	7000	6520	5840	5150	4470	4120			
RWY 045°								HL-P1	THR 2827 (98hPa) / TDZ 2827 (---%) +0.1%



05	VOR DME	VOR DME APL U/S				Circling
						C
D	ft - m/km ft	1080 - 4.5V 3900	1080 - 5.0V 3900			3070 - 5.0V 5900

Changes: APL, DIST ALT table, OBST, Navaid , ROD

THIS CHART IS A PART OF NAVIGRAPH CHARTS AND IS INTENDED FOR FLIGHT SIMULATION USE ONLY



05/23		Letdown NDB DME IPT				Circling
C	ft - m/km ft	Straight-in Not authorized				2620 - 5.0V 5450
D	ft - m/km ft	Straight-in Not authorized				3070 - 5.0V 5900

Changes: chart title, APL, OBST, DIST ALT table, Profile