

**GENERAL****ATS Hours**

See Notam.

**Airport Information****RFF:** CAT 7**PCN:** RWY 04/22: 110/R/C/W/T**Customs:** 24HRS PN required.**Warnings****HTY NDB** unusable:

030°-040° beyond 18NM.

041°-135° beyond 13NM.

136°-165° beyond 9NM.

166°-190° beyond 20NM.

240°-010° beyond 15NM.

Below 12000ft.

**HTY VOR/DME** unusable:

R030-R040 beyond 18NM.

R041-R135 beyond 13NM.

R136-R165 beyond 9NM.

R166-R190 beyond 20NM.

R240-R010 beyond 15NM.

Below 12000ft.

**RWY 22: IHTY ILS/DME LOC** unusable beyond D12.4 from GP.

Do not penetrate Syrian Border during HLDG PROC.

Birds in vicinity of AD.

**ARRIVAL****Speed**

MAX IAS 250KT within TMA at or below FL100 (refer to RFCs).

**DEPARTURE****Take-off Minima**

RWY		04/22
All ACFT	ft - m/km	0 - 400v

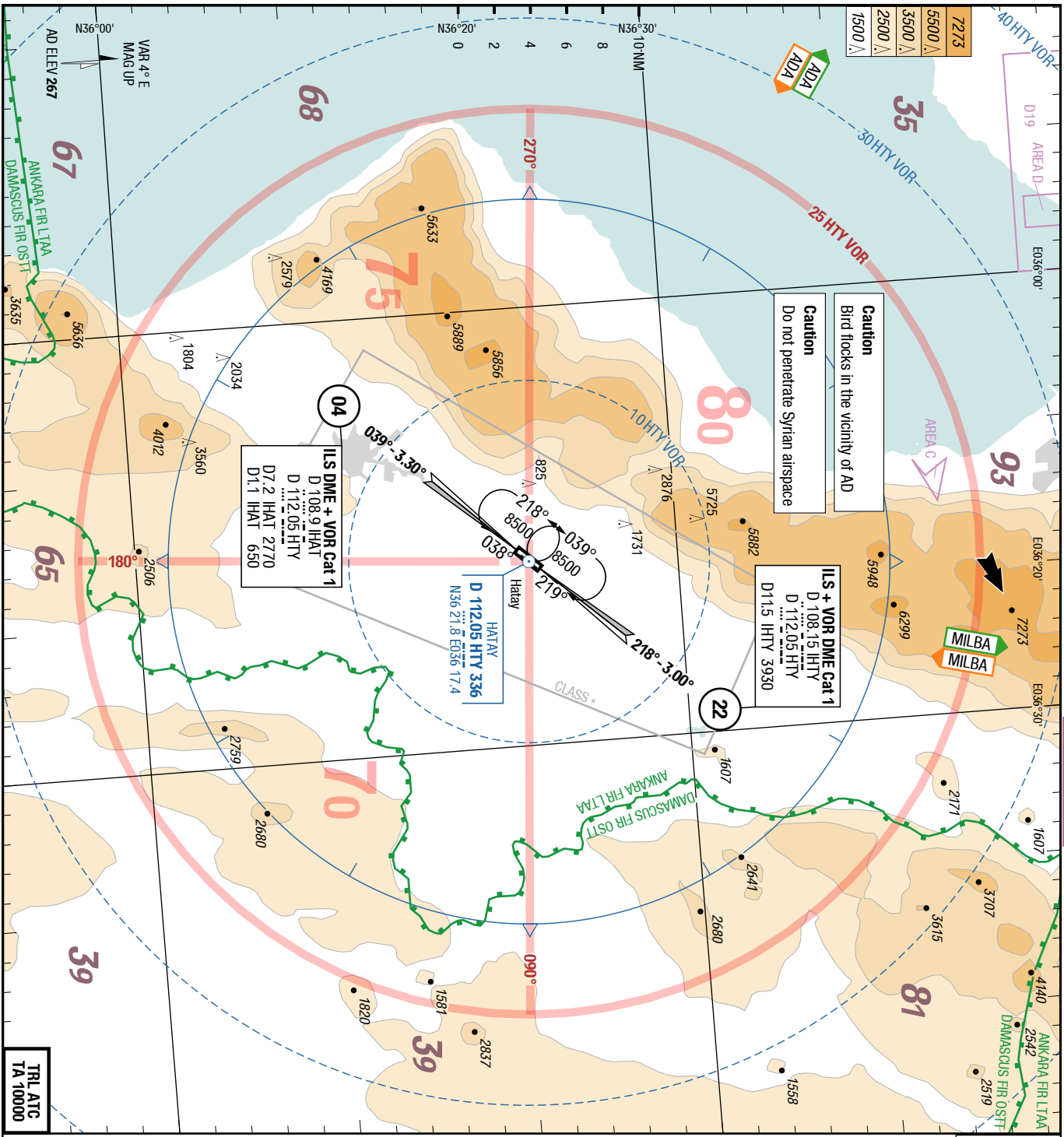
**Speed**

MAX IAS 250KT within TMA at or below FL100 (refer to RFCs).

**ATC Slot, Clearance****Start-up:** For start-up PROCs see CRAR.**De-icing**

Not AVBL.

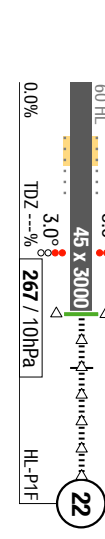
2-10



ATIS	Hours by NOTAM
121.250	Hours by NOTAM
APP	118.725 Hours by NOTAM
TWR	128.525 Hours by NOTAM
GND	121.700 Hours by NOTAM

**Landing RWY system:**

04	3000 x 45	83.3°
22	3000 x 45	83.3°



Changes: Nil

VAR 4° E  
MAG UP

AD ELEV 267

ANKARA FIR LTAA  
DAMASCUS FIR OSTT

ILS + VOR DME Cat 1  
D 108.9 IHAT  
D 112.05 HTY  
D 7 2 IHAT 2770  
D 1.1 IHAT 650

HATAY  
D 112.05 HTY 336  
N36 21.8 E036 17.4

ILS + VOR DME Cat 1  
D 108.15 HTY  
D 112.05 HTY  
D 11.5 IHAT 3930

Caution  
Bird flocks in the vicinity of AD  
Do not penetrate Syrian airspace

TRL ATC  
TA 10000



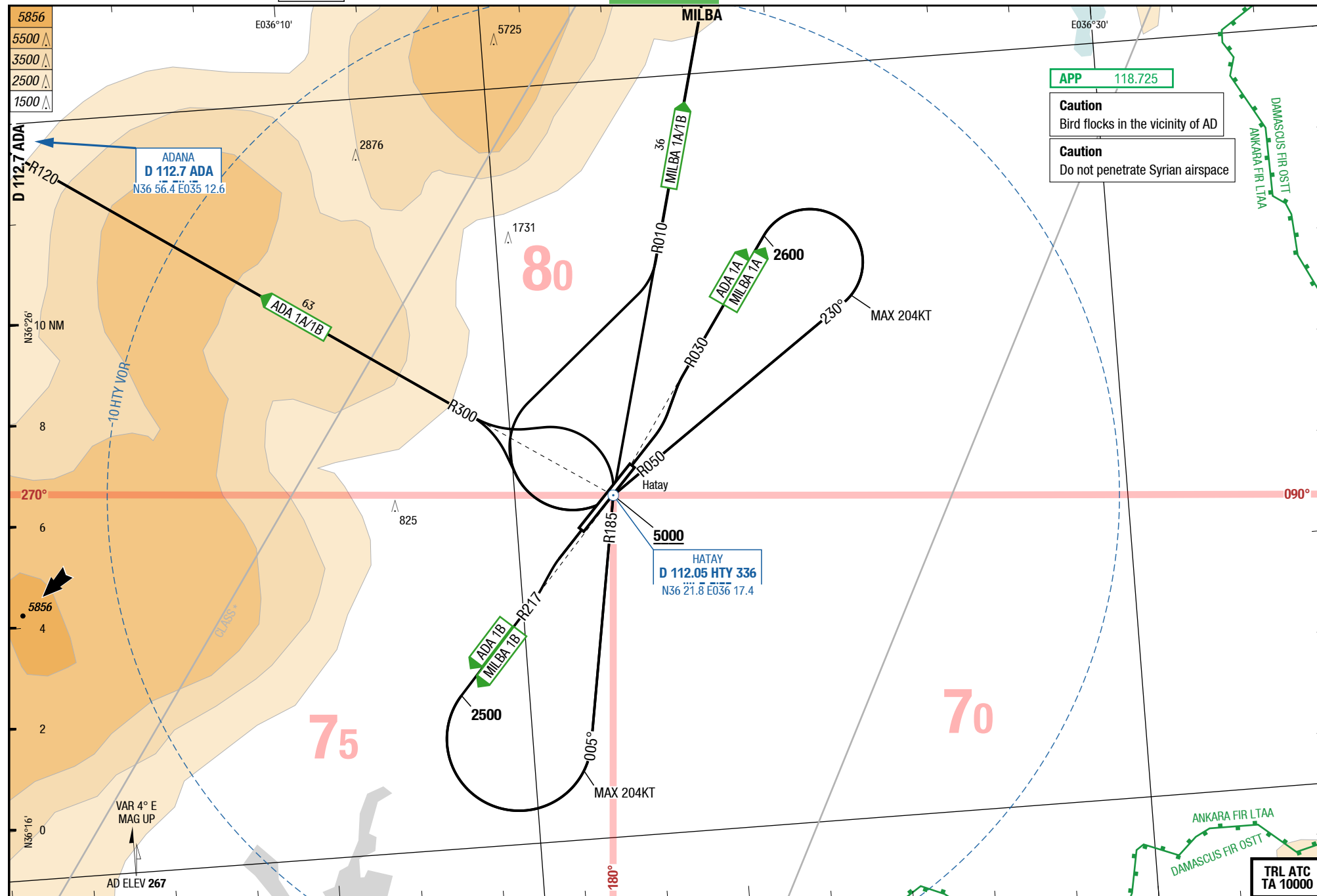
16-JUN-2016  
HTY-LTDA

4-10

Turkey Hatay  
SIDs (NDB)  
SIDs (VOR)

SID SID

Hatay Turkey  
SIDs (NDB)  
SIDs (VOR)



APP 118.725

**Caution**  
Bird flocks in the vicinity of AD

**Caution**  
Do not penetrate Syrian airspace

TRL ATC  
TA 10000

Changes: OBST, Note

THIS CHART IS A PART OF NAVIGRAPH CHARTS AND IS INTENDED FOR FLIGHT SIMULATION USE ONLY

© Lido 2016

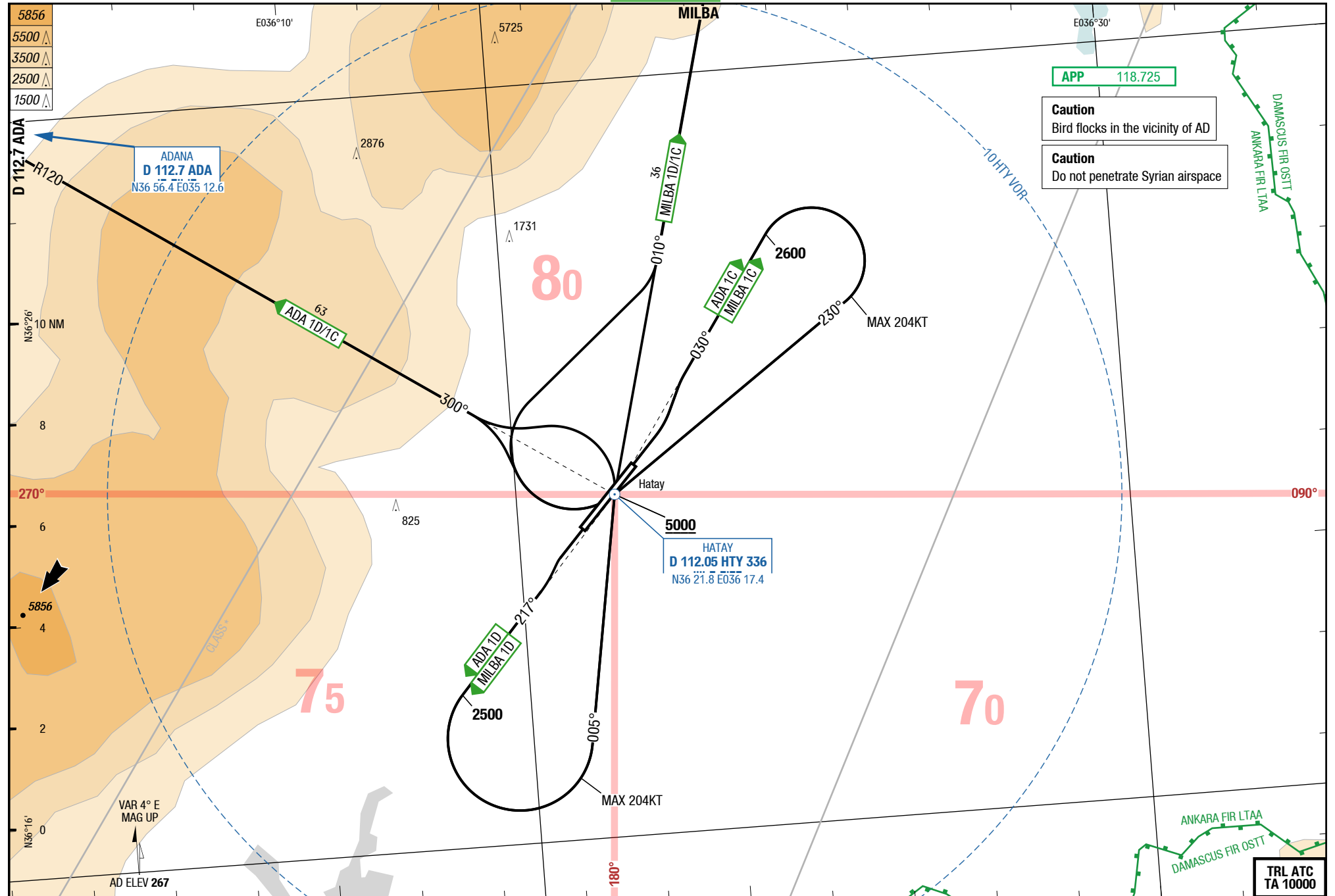
16-JUN-2016  
HTY-LTDA

4-20

Turkey Hatay  
SIDs (NDB)

SID SID

Hatay Turkey  
SIDs (NDB)



**APP** 118.725

**Caution**  
Bird flocks in the vicinity of AD

**Caution**  
Do not penetrate Syrian airspace

**5000**  
HATAY  
D 112.05 HTY 336  
N36 21.8 E036 17.4

ADANA  
D 112.7 ADA  
N36 56.4 E035 12.6

TRL ATC  
TA 10000

Changes: OBST, Note

THIS CHART IS A PART OF NAVIGRAPH CHARTS AND IS INTENDED FOR FLIGHT SIMULATION USE ONLY

## ADANA 1A / MILBA 1A / ADANA 1B / MILBA 1B

RWYs 04 (038°) / 22 (218°)

DESIGNATOR	ROUTING	ALTITUDES
	<b>Runway 04</b>	
<b>ADANA 1A</b> <b>ADA 1A</b> <b>118.725</b> ①	intercept R030 <b>HTY</b> - at <b>2600 RT</b> (MAX 204KT until inbound <b>HTY VOR</b> ) intercept R050 <b>HTY</b> to <b>HTY</b> - R300 <b>HTY</b> to <b>ADA</b> - join AWY	<b>HTY MNM 5000</b>
<b>MILBA 1A</b> <b>118.725</b> ①	intercept R030 <b>HTY</b> - at <b>2600 RT</b> (MAX 204KT until inbound <b>HTY VOR</b> ) intercept R050 <b>HTY</b> to <b>HTY</b> - R010 <b>HTY</b> to MILBA - join AWY	<b>HTY MNM 5000</b>
	<b>Runway 22</b>	
<b>ADANA 1B</b> <b>ADA 1B</b> <b>118.725</b> ①	intercept R217 <b>HTY</b> - at <b>2500 LT</b> (MAX 204KT until inbound <b>HTY VOR</b> ) intercept R185 <b>HTY</b> to <b>HTY</b> - R300 <b>HTY</b> to <b>ADA</b> - join AWY	<b>HTY MNM 5000</b>
<b>MILBA 1B</b> <b>118.725</b> ①	intercept R217 <b>HTY</b> - at <b>2500 LT</b> (MAX 204KT until inbound <b>HTY VOR</b> ) intercept R185 <b>HTY</b> to <b>HTY</b> - R010 <b>HTY</b> to MILBA - join AWY	<b>HTY MNM 5000</b>

① Caution: Do not penetrate Syrian airspace.

Changes: FREQ

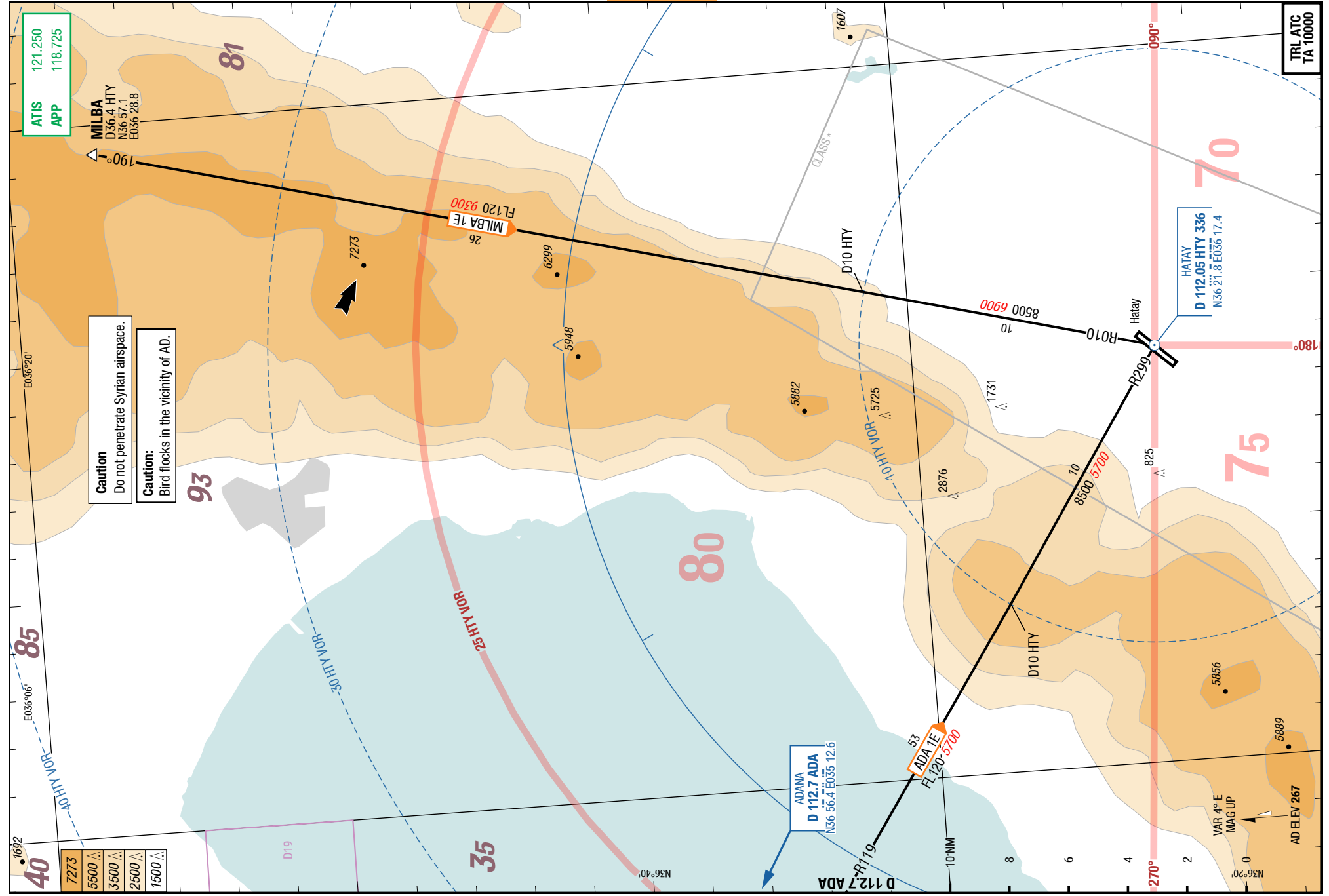
## ADANA 1C / MILBA 1C / ADANA 1D / MILBA 1D

RWYs 04 (038°) / 22 (218°)

DESIGNATOR	ROUTING	ALTITUDES
	<b>Runway 04</b>	
<b>ADANA 1C</b> <b>ADA 1C</b> <b>118.725</b> ①	intercept QDR 030 HTY - at <b>2600 RT</b> (MAX 204KT until inbound HTY NDB) 230° to HTY - QDR 300 HTY to ADA - join AWY	<b>HTY MNM 5000</b>
<b>MILBA 1C</b> <b>118.725</b> ①	intercept QDR 030 HTY - at <b>2600 RT</b> (MAX 204KT until inbound HTY NDB) 230° to HTY - QDR 010 HTY to MILBA - join AWY	<b>HTY MNM 5000</b>
	<b>Runway 22</b>	
<b>ADANA 1D</b> <b>ADA 1D</b> <b>118.725</b> ①	intercept QDR 217 HTY - at <b>2500 LT</b> (MAX 204KT until inbound HTY NDB) 005° to HTY - QDR 300 HTY to ADA - join AWY	<b>HTY MNM 5000</b>
<b>MILBA 1D</b> <b>118.725</b> ①	intercept QDR 217 HTY - at <b>2500 LT</b> (MAX 204KT until inbound HTY NDB) 005° to HTY - QDR 010 HTY to MILBA - join AWY	<b>HTY MNM 5000</b>

① Caution: Do not penetrate Syrian airspace.

Changes: FREQ



Changes: ALT, PROC, OBST, MEA

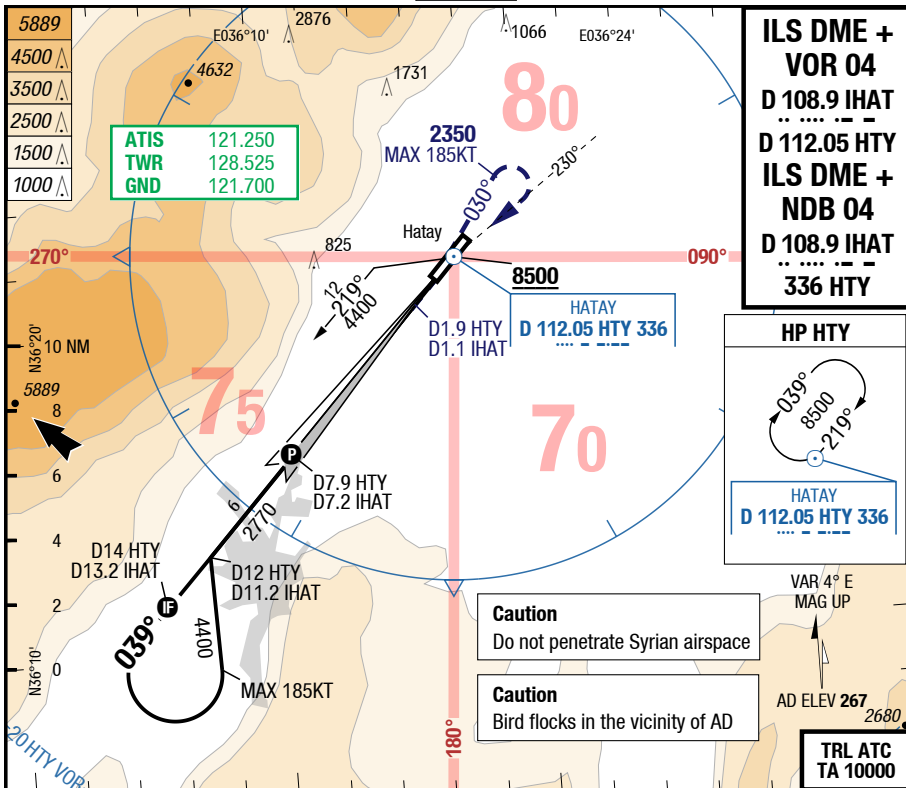


16-JUN-2016

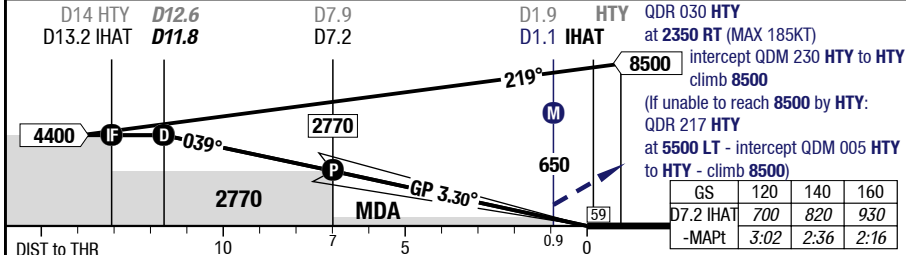
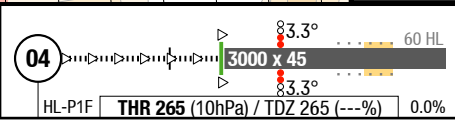
HTY-LTDA

7-10

ILS DME + VOR 04 / ILS DME + NDB 04



LOC 3.30°	11.8	10	8	6	4	2
D IHAT						
039°						
RWY 038°	4400	3770	3070	2370	1660	960



C	ft - m/km	200 - 550	390 - 1.1	390 - 1.1	1940 - 2.4V 2200
	ft	470	650	650	
D	ft - m/km	200 - 550	390 - 1.1	390 - 1.1	2600 - 3.6V 2860
	ft	470	650	650	

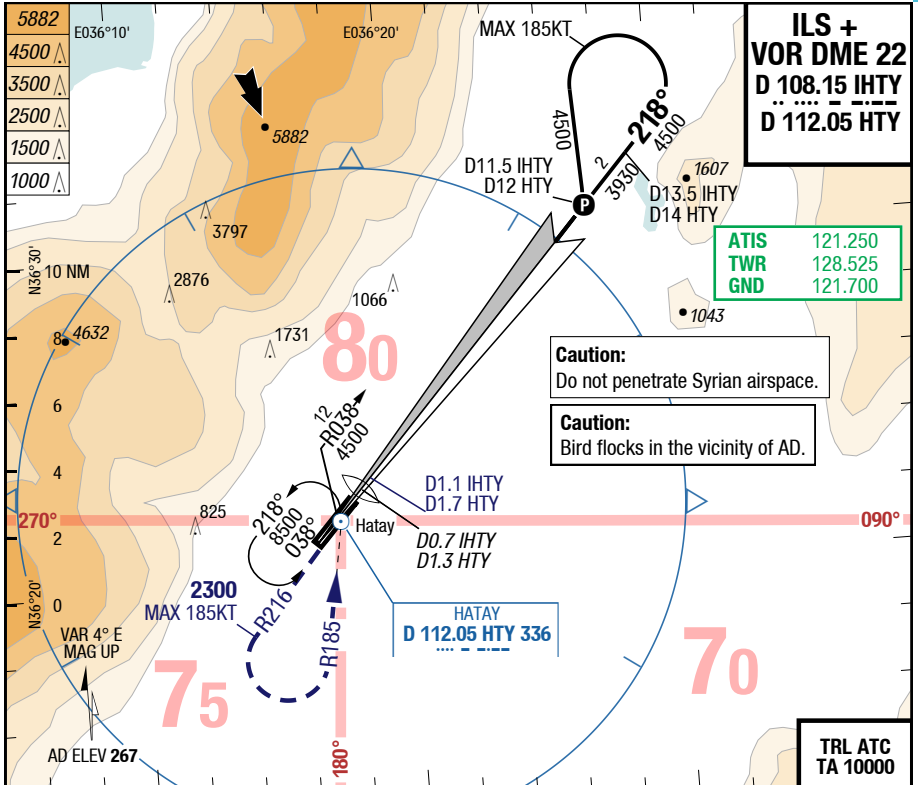
1) FD, AP or HGS required, else RVR 750m  
 2) With EVS 750m

Changes: new

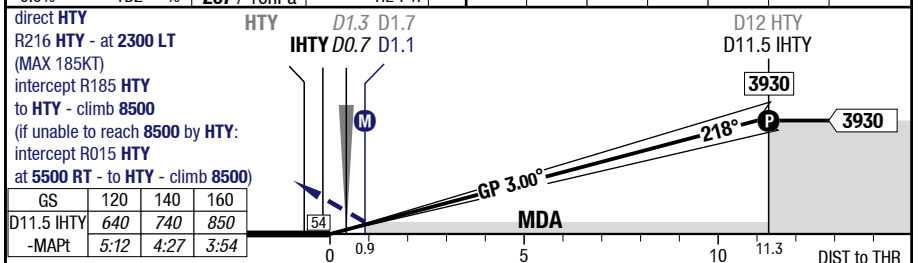
HTY-LTDA

7-20

ILS + VOR DME 22



60 HL	3.0°	45 x 3000	22	2	4	6	8	10	11.5	LOC 3.01° D HTY
0.0%	TDZ ---%	267 / 10hPa	HL-P1F	900	1540	2180	2820	3460	3930	



<b>22</b>	Cat 1 DME <sup>1) 2)</sup>	LOC DME <sup>3)</sup>			<b>Circling</b>
C	ft - m/km ft	200 - 550 <b>470</b>	390 - 1.1 <b>650</b>		1940 - 2.4V <b>2200</b>
D	ft - m/km ft	200 - 550 <b>470</b>	390 - 1.1 <b>650</b>		2600 - 3.6V <b>2860</b>

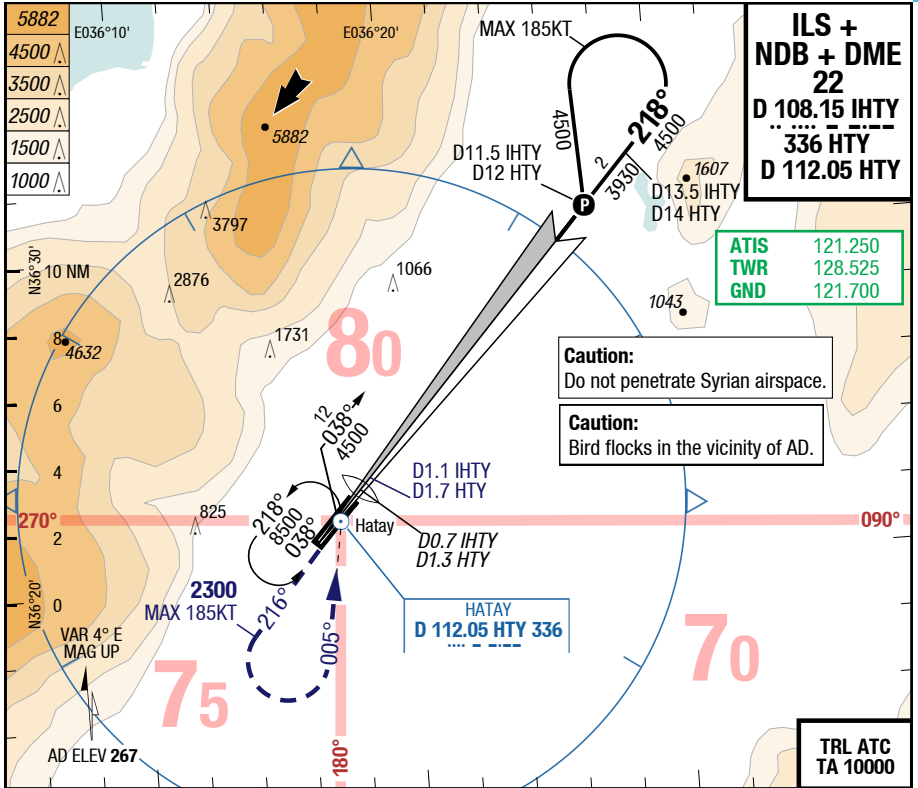
1) With EVS 550m  
2) FD, AP or HGS required, else RVR 750m  
3) Timing to determine MAPt NA

Changes: Page Number

HTY-LTDA

7-30

ILS + NDB + DME 22



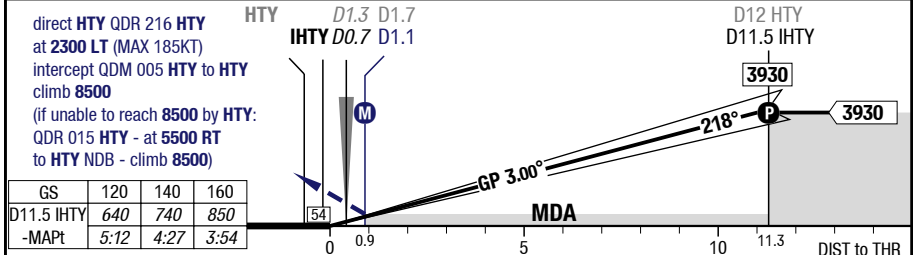
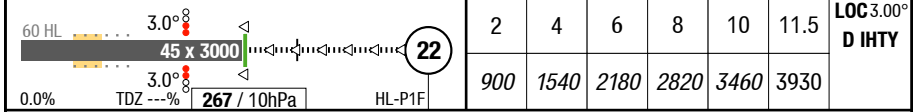
**ILS + NDB + DME 22**  
**D 108.15 IHTY**  
**336 HTY**  
**D 112.05 HTY**

**ATIS 121.250**  
**TWR 128.525**  
**GND 121.700**

**Caution:**  
Do not penetrate Syrian airspace.

**Caution:**  
Bird flocks in the vicinity of AD.

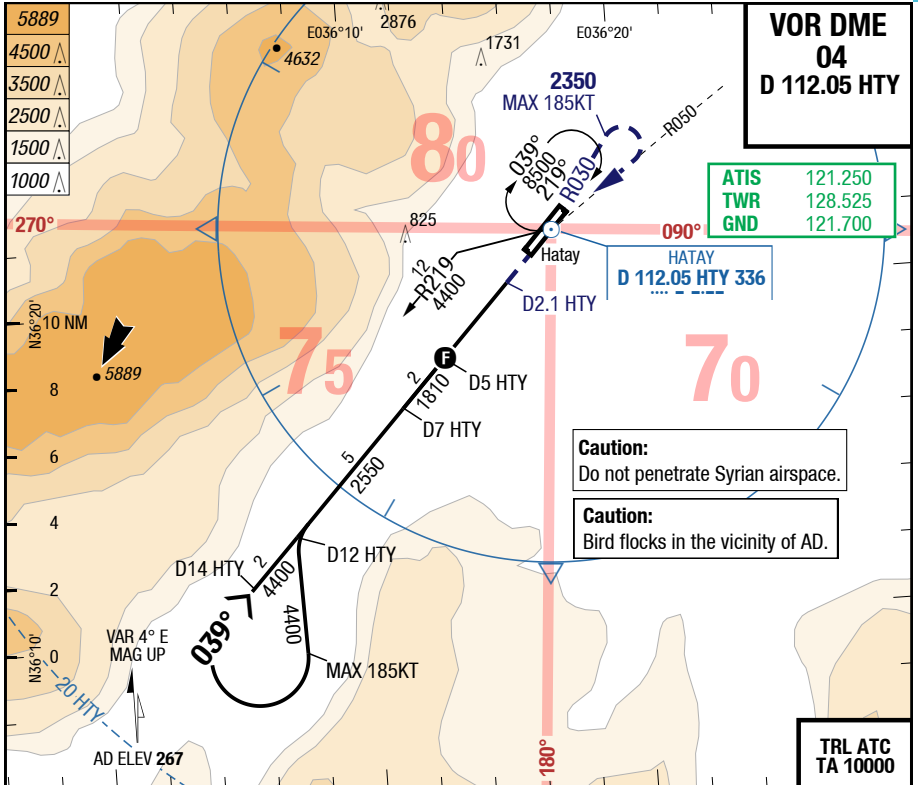
**TRL ATC TA 10000**



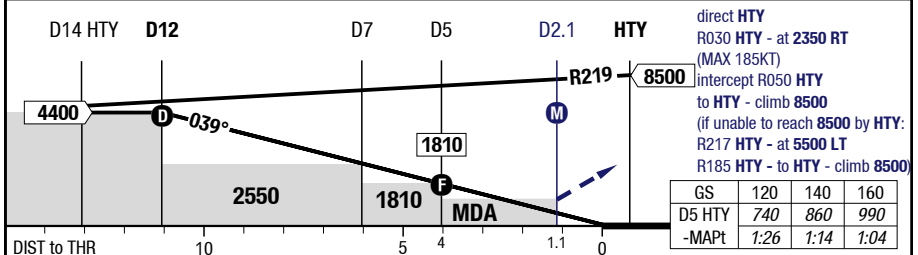
<b>22</b>	Cat 1 DME <sup>(1) 2)</sup>	LOC DME <sup>(3)</sup>			<b>Circling</b>
C	ft - m/km ft	200 - 550 <b>470</b>	390 - 1.1 <b>650</b>		1940 - 2.4V <b>2200</b>
D	ft - m/km ft	200 - 550 <b>470</b>	390 - 1.1 <b>650</b>		2600 - 3.6V <b>2860</b>

1) With EVS 550m  
 2) FD, AP or HGS required, else RVR 750m  
 3) Timing to determine MAPt NA

Changes: Page Number



3.49° <b>D HTY</b> 039° RWY 038°	12	10	8	6	4	2		
	4400	3680	2940	2200	1460	720		
							HL-P1F	THR 265 (10hPa) / TDZ 265 (---%) 0.0%



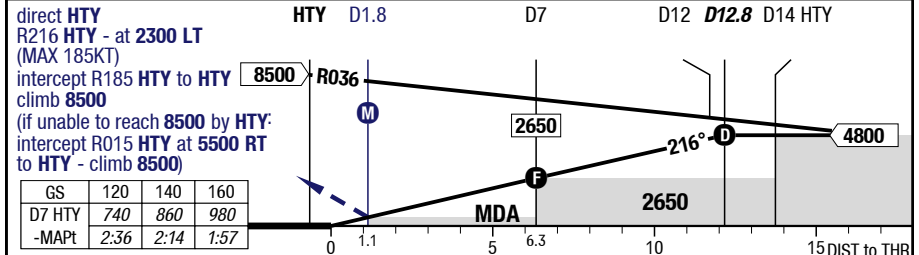
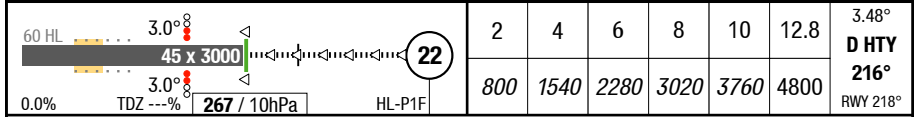
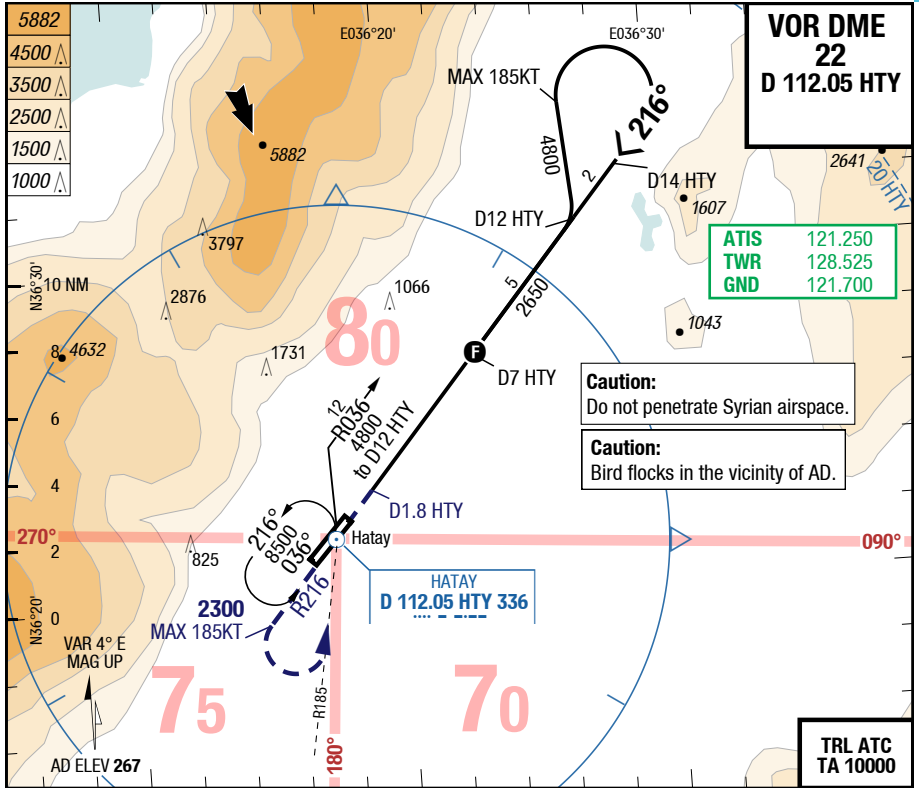
<b>04</b>	<b>VOR DME</b>	<b>VOR DME</b> APL U/S	<b>Circling</b>
C	ft - m/km ft 390 - 1.3V <b>650</b>	390 - 2.0V <b>650</b>	1940 - 5.0V <b>2200</b>
D	ft - m/km ft 390 - 1.3V <b>650</b>	390 - 2.0V <b>650</b>	2600 - 5.0V <b>2860</b>

Changes: APL

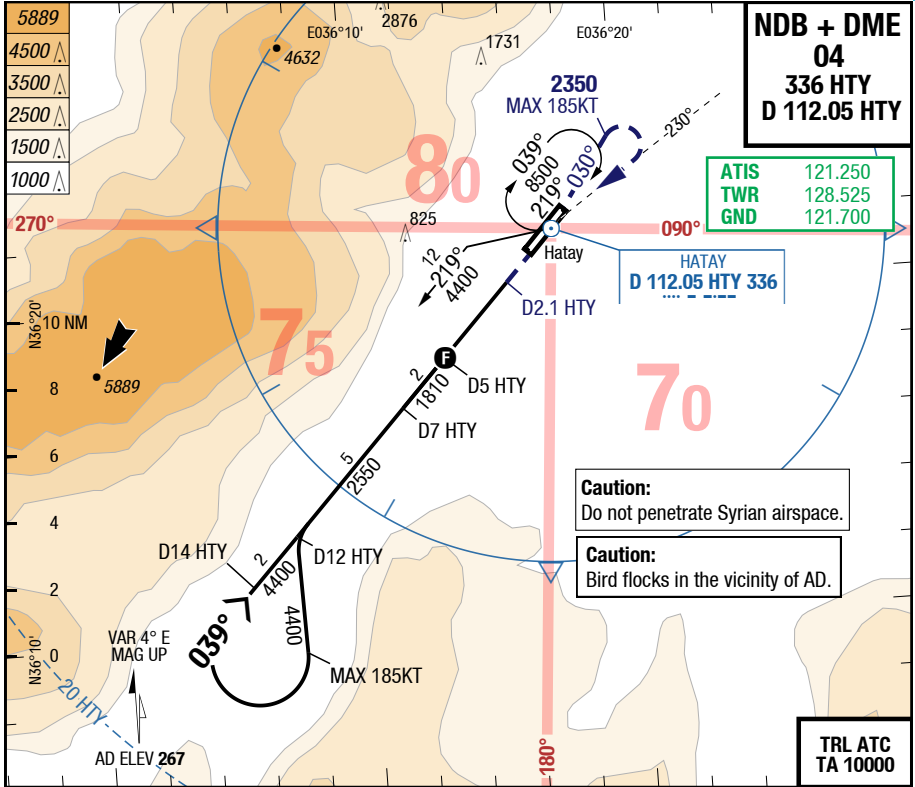
HTY-LTDA

7-50

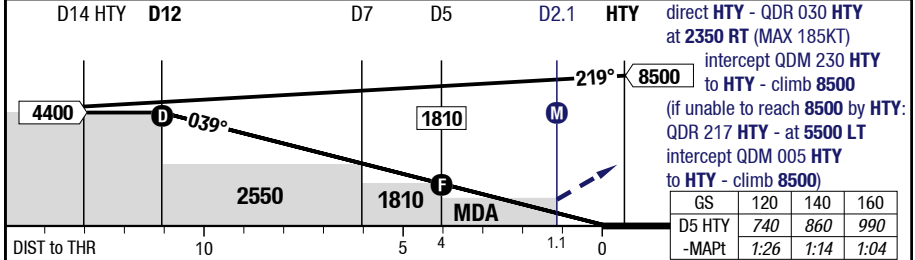
VOR DME 22



<b>22</b>	<b>VOR DME</b>	<b>VOR DME</b> APL U/S	<b>Circling</b>
C	ft - m/km ft	390 - 1.3V <b>650</b>	1940 - 5.0V <b>2200</b>
D	ft - m/km ft	390 - 1.3V <b>650</b>	2600 - 5.0V <b>2860</b>



3.49° D HTY 039° RWY 038°	12	10	8	6	4	2	
	4400	3680	2940	2200	1460	720	



C	ft - m/km ft	390 - 1.3V <b>650</b>	390 - 2.0V <b>650</b>	Circling
	D	ft - m/km ft	390 - 1.3V <b>650</b>	

Changes: APL

