

GENERAL

ATS Hours

See NOTAM

Airport Information

RFF: CAT 7
PCN: RWY 05/23: 110/R/C/W/T
Customs: Not published

Warnings

Birds in vicinity of AD.

ARRIVAL

Speed

MAX IAS 250KT within TMA at or below FL100 (refer to RFCs)

DEPARTURE

Take-off Minima

RWY		05/23	
All ACFT	ft - m/km	0 - 400V	-

Speed

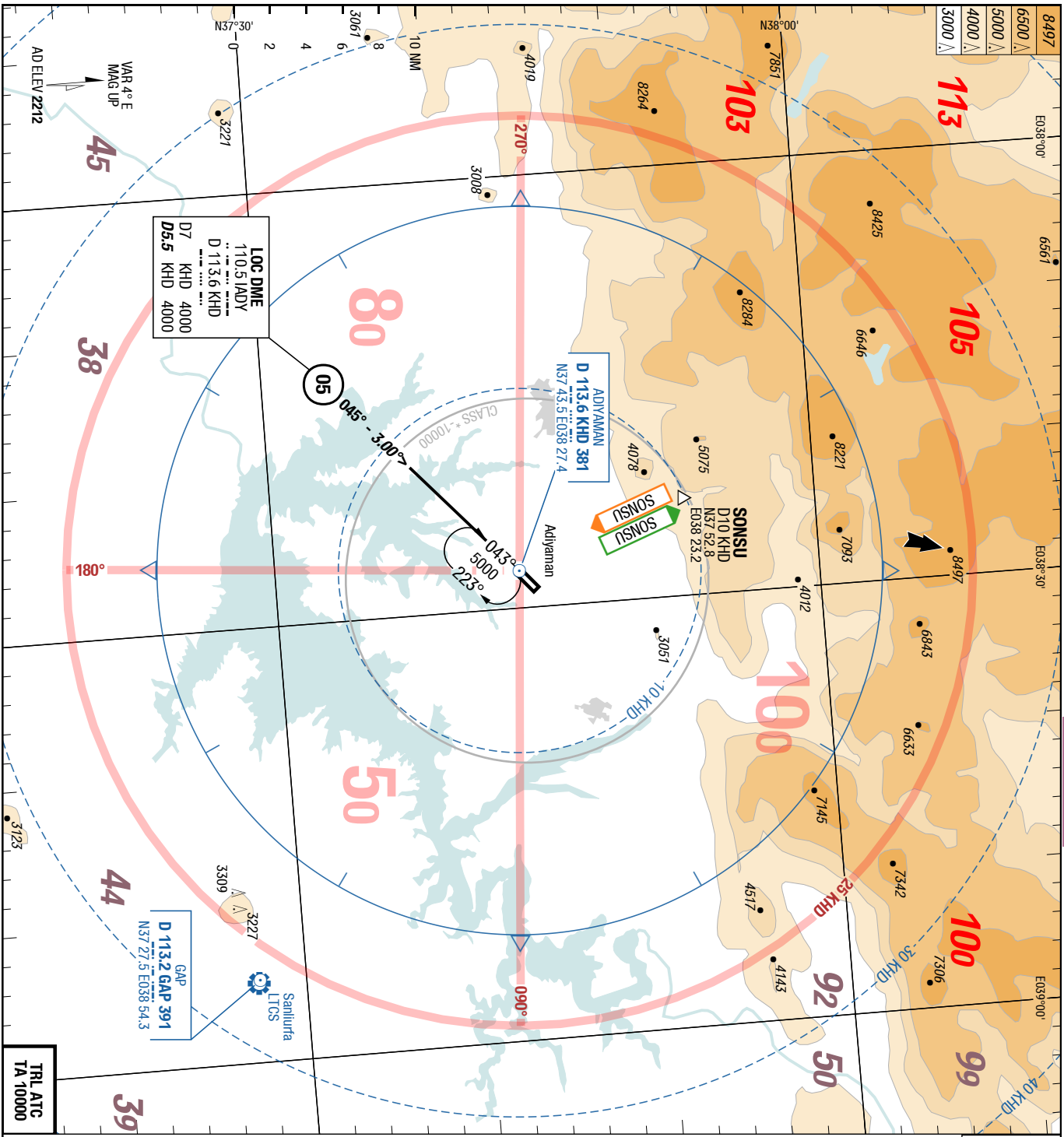
MAX IAS 250KT within TMA at or below FL100 (refer to RFCs)

ATC Slot, Clearance

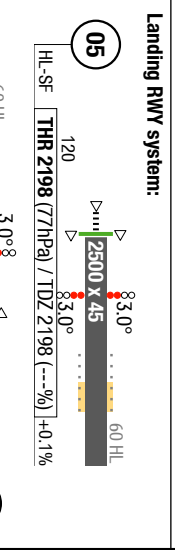
Start-up: For start-up PROCs see CRAR Turkey.

De-icing

See NOTAM

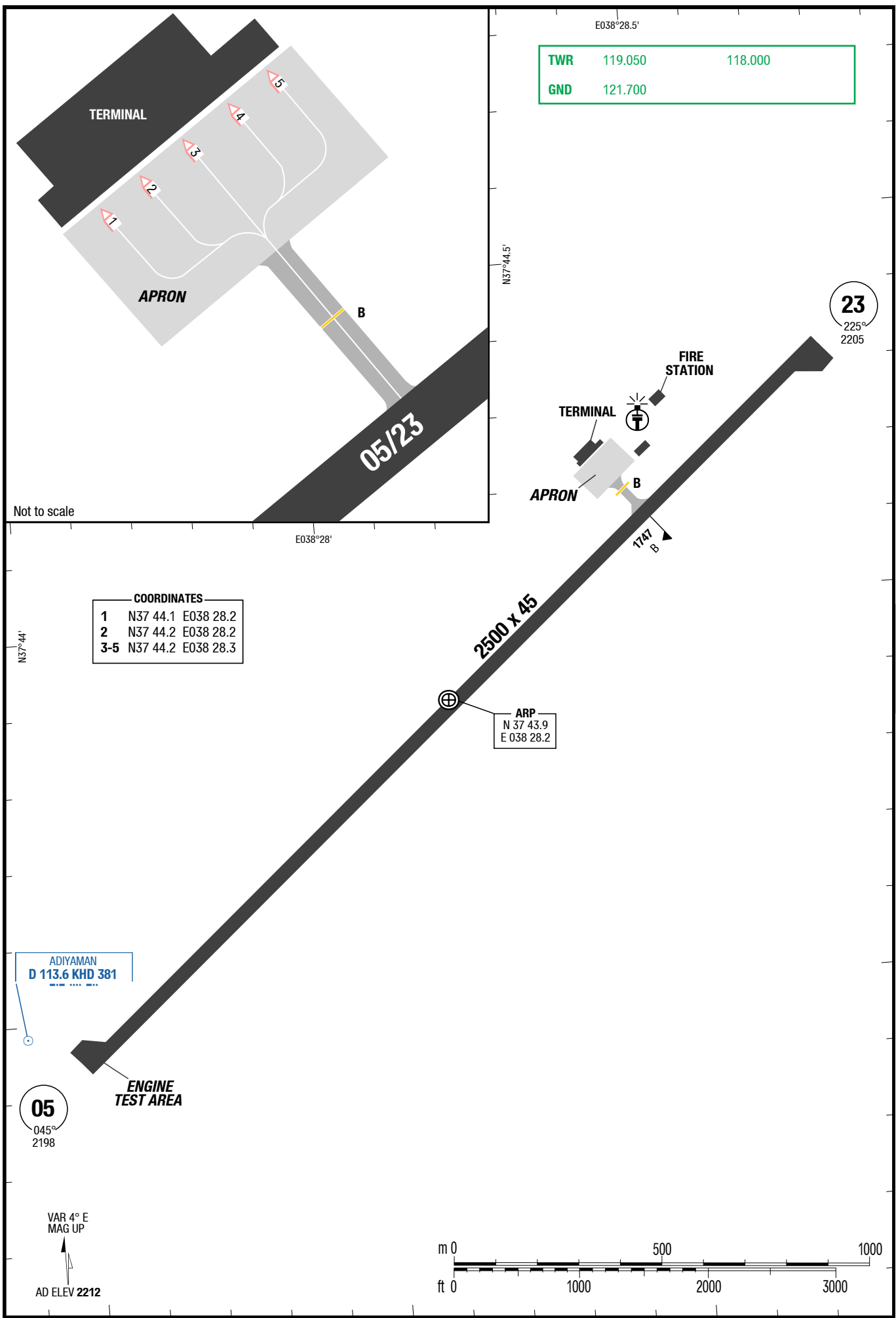


Ethac APP	118.775
TWR	119.050
	118.000
GND	121.700

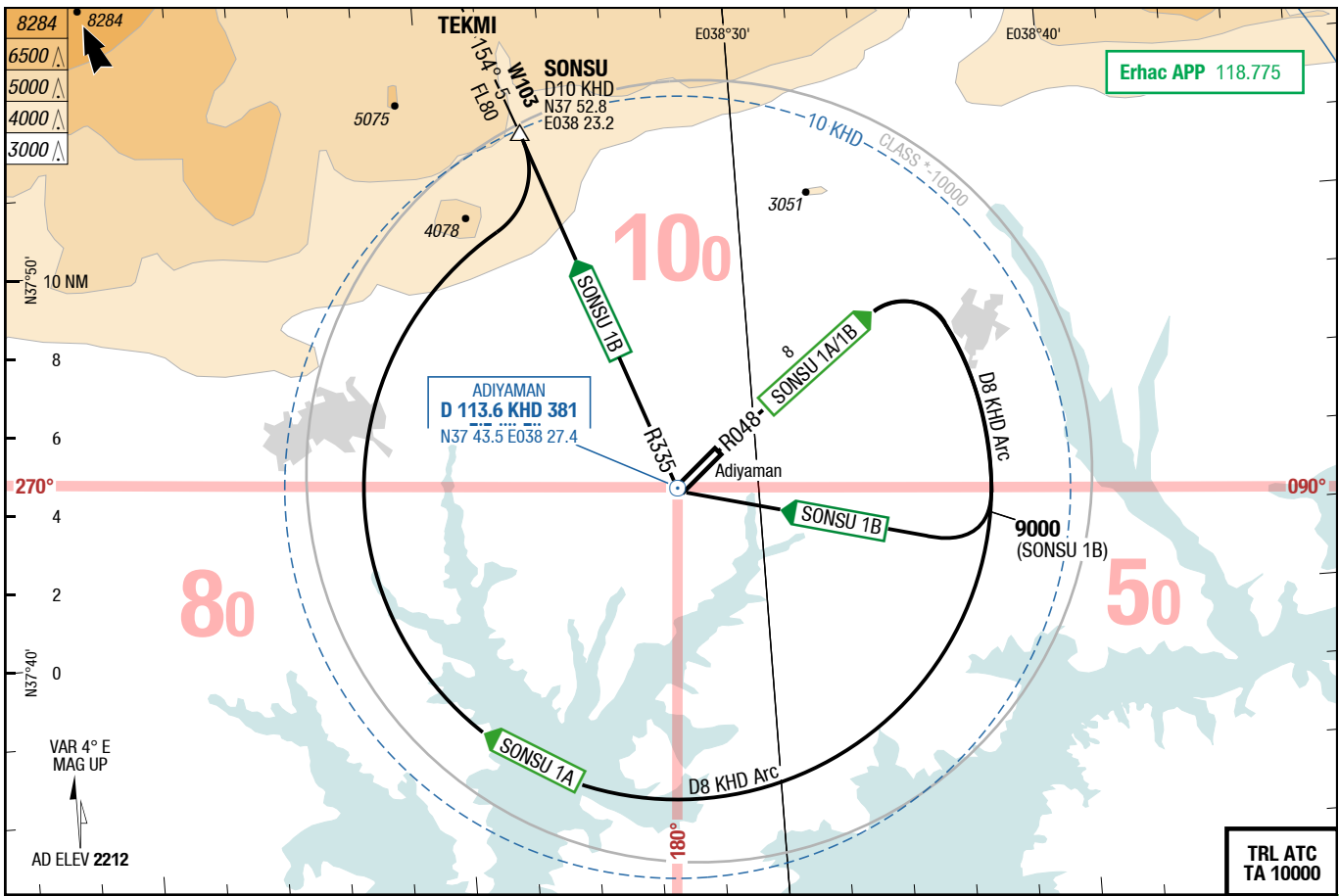


Changes: APL

THIS CHART IS A PART OF NAVIGRAPH CHARTS AND IS INTENDED FOR FLIGHT SIMULATION USE ONLY



Changes: Note
THIS CHART IS A PART OF NAVIGRAPH CHARTS AND IS INTENDED FOR FLIGHT SIMULATION USE ONLY

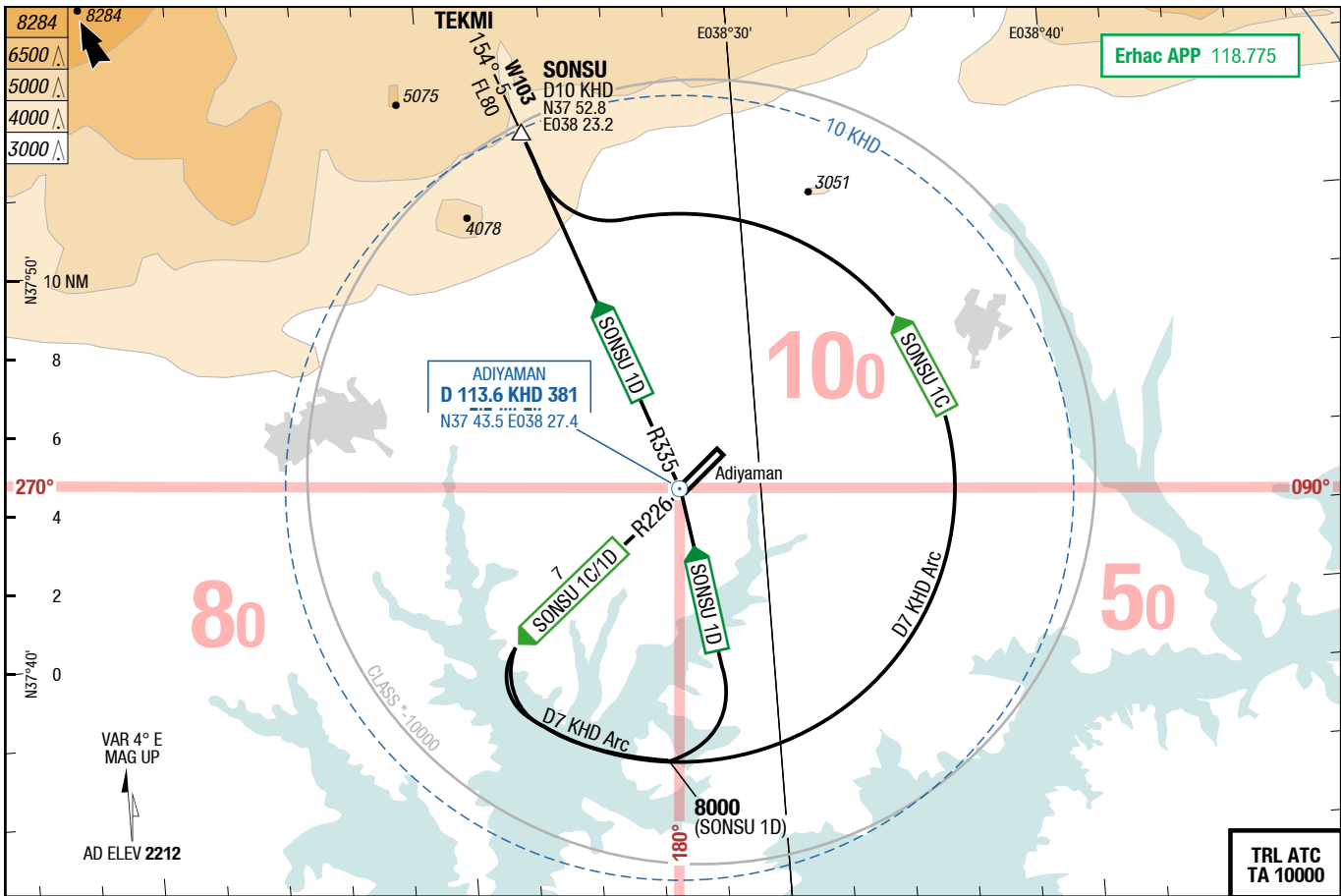


THIS CHART IS A PART OF NAVGRAPH CHARTS AND IS INTENDED FOR FLIGHT SIMULATION USE ONLY

Changes: FREQ

Erhac APP 118.775

TRL ATC
TA 10000



Changes: FREQ

THIS CHART IS A PART OF NAVGRAPH CHARTS AND IS INTENDED FOR FLIGHT SIMULATION USE ONLY

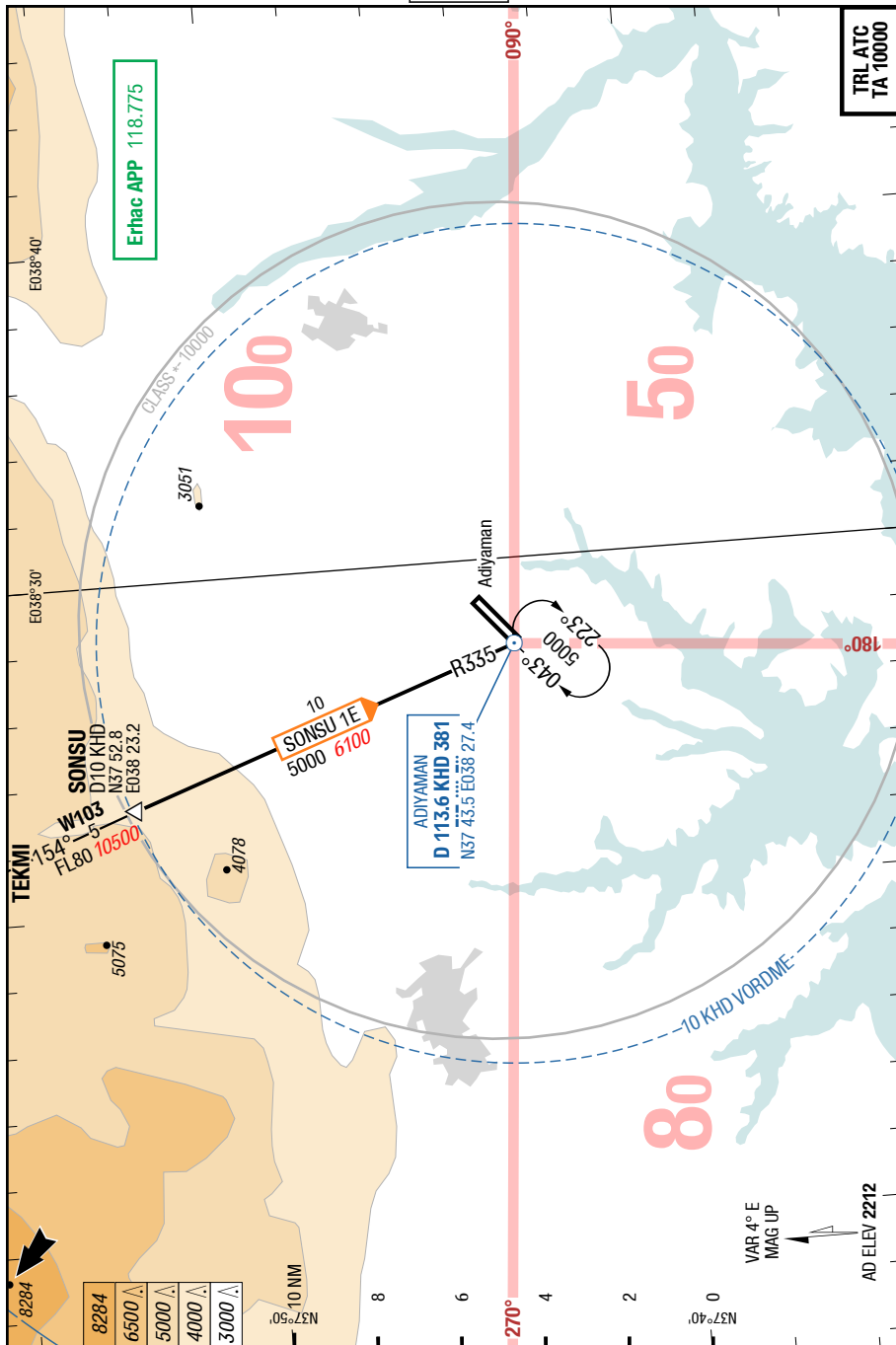
SONSU 1A / SONSU 1B

RWY 05 (045°)

DESIGNATOR	ROUTING	ALTITUDES
	Runway 05	
SONSU 1A 118.775	R048 KHD - at D8 KHD RT follow D8 KHD Arc - intercept R335 KHD to SONSU - join AWY W103	
SONSU 1B 118.775	R048 KHD - at D8 KHD RT follow D8 KHD Arc - at 9000 direct KHD - R335 KHD to SONSU - join AWY W103	

SONSU 1C / SONSU 1D
 RWY 23 (225°)

DESIGNATOR	ROUTING	ALTITUDES
	Runway 23	
SONSU 1C 118.775	R226 KHD - at D7 KHD LT follow D7 KHD Arc - intercept R335 KHD to SONSU - join AWY W103	
SONSU 1D 118.775	R226 KHD - at D7 KHD LT follow D7 KHD Arc - at 8000 direct KHD - R335 KHD to SONSU - join AWY W103	



TTL ATC
TA 10000

Changes: FREQ

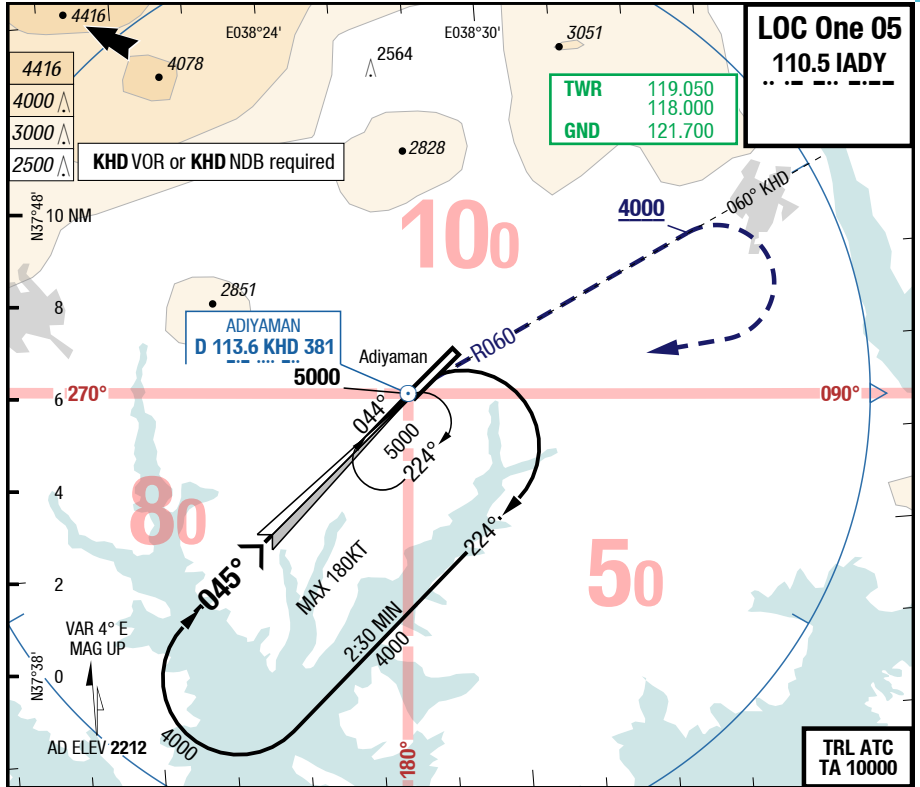
© Lido 2015

22-DEC-2016

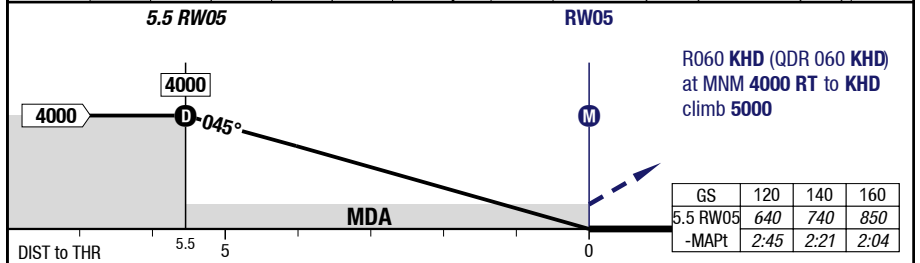
ADF-LTCP

7-10

LOC One 05



3.00°		5.5	5	4	3	2	
RW05		4000	3830	3520	3200	2880	



05		LOC				Circling
C	ft - m/km ft	410 - 1.9 2600				1090 - 2.4V 3300
D	ft - m/km ft	410 - 1.9 2600				1090 - 3.6V 3300

Changes: ALT, APL, Profile, OBST, MISAP text, Editorial

THIS CHART IS A PART OF NAVIGRAPH CHARTS AND IS INTENDED FOR FLIGHT SIMULATION USE ONLY

22-DEC-2016

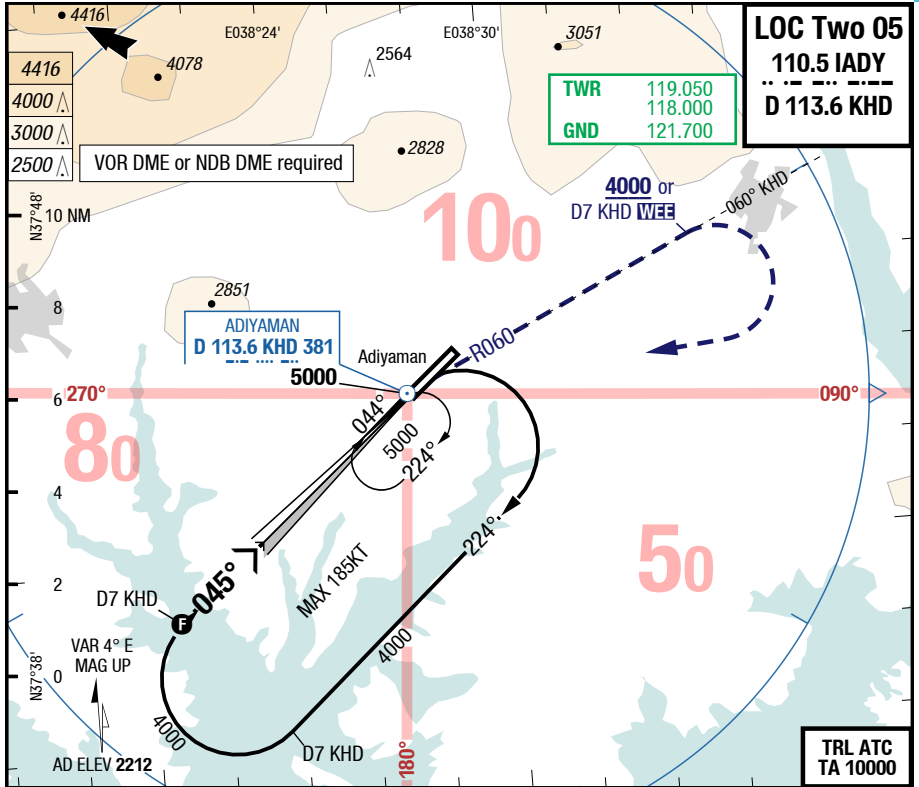
ADF-LTCP

Turkey Adiyaman

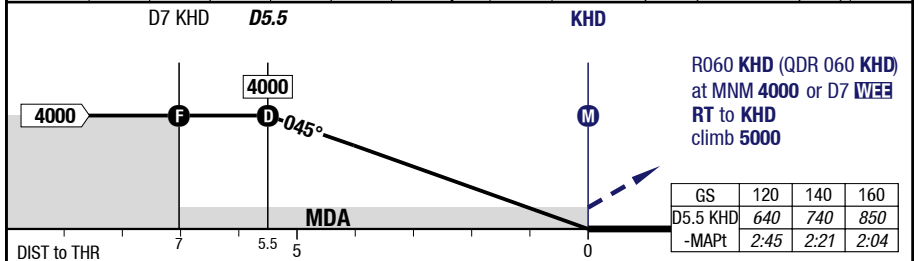
7-20

LOC Two 05

IAC



3.00° D KHD	5.5	5	4	3	2	1	5 05	HL-SF THR 2198 (77hPa) / TDZ 2198 (---%) +0.1%
	4000	3850	3530	3220	2900	2580		



05		LOC DME KHD					Circling
C	ft - m/km ft	360 - 1.6 2550					1090 - 2.4V 3300
D	ft - m/km ft	360 - 1.6 2550					1090 - 3.6V 3300

Changes: ALT, APL, OBST, MISAP text, Editorial

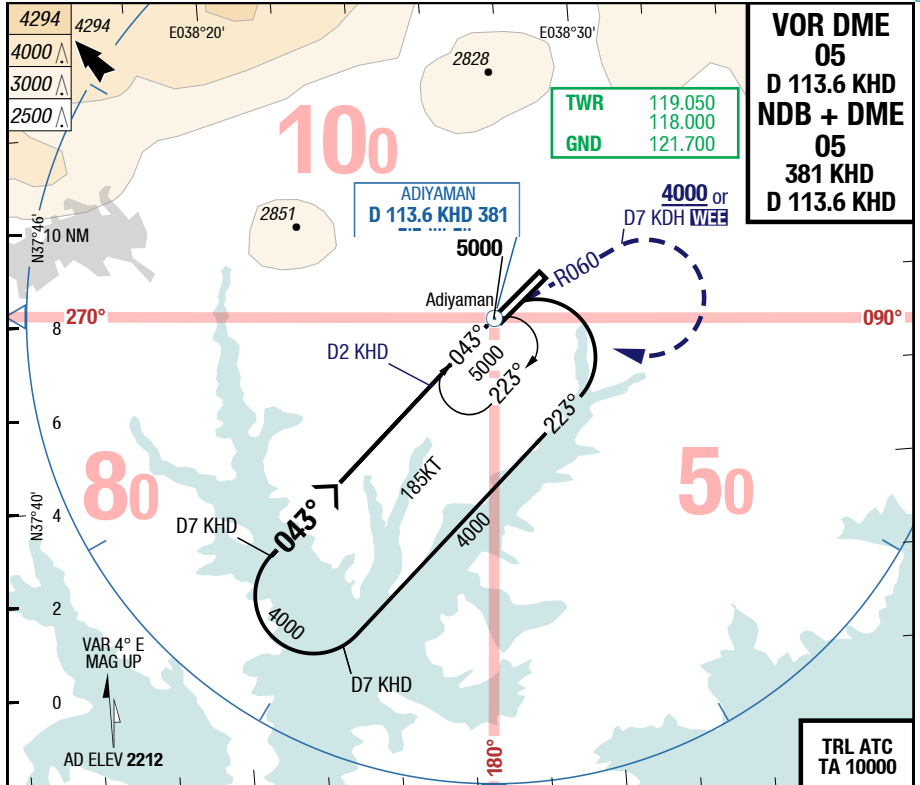
THIS CHART IS A PART OF NAVIGRAPH CHARTS AND IS INTENDED FOR FLIGHT SIMULATION USE ONLY

22-DEC-2016

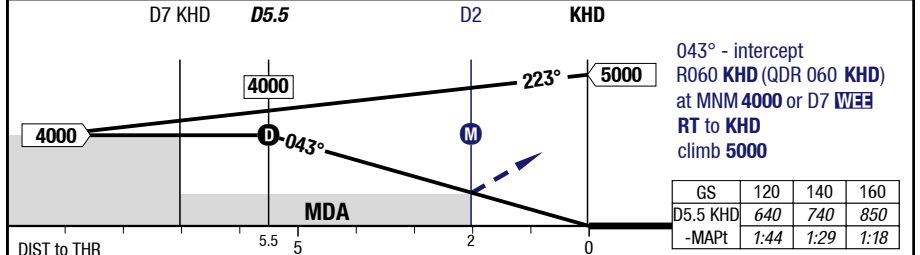
ADF-LTCP

7-30

VOR DME 05 / NDB + DME 05



3.00°		5.5	5	4	3	2	05	83.0° 2500 x 45 60 HL 120 83.0° THR 2198 (77hPa) / TDZ 2198 (---%) +0.1%
D KHD								
043°		4000	3850	3530	3220	2900		
RWY 045°								



DIST TO THR		5.5	5	2	0	
		D5.5		D2		KHD
		4000		5000		043° - intercept R060 KHD (QDR 060 KHD) at MNM 4000 or D7 WEE RT to KHD climb 5000
		MDA				
		640		740		850
		1:44		1:29		1:18

05	VOR DME	VOR DME	NDB DME	NDB DME	Circling	
		APL U/S		APL U/S		
C	ft - m/km ft	510 - 2.7V 2700	510 - 2.9V 2700	510 - 2.7V 2700	510 - 2.9V 2700	1090 - 4.8V 3300
D	ft - m/km ft	510 - 2.7V 2700	510 - 2.9V 2700	510 - 2.7V 2700	510 - 2.9V 2700	1090 - 4.8V 3300

Changes: APL, ALT, MISAP text

THIS CHART IS A PART OF NAVIGRAPH CHARTS AND IS INTENDED FOR FLIGHT SIMULATION USE ONLY

22-DEC-2016

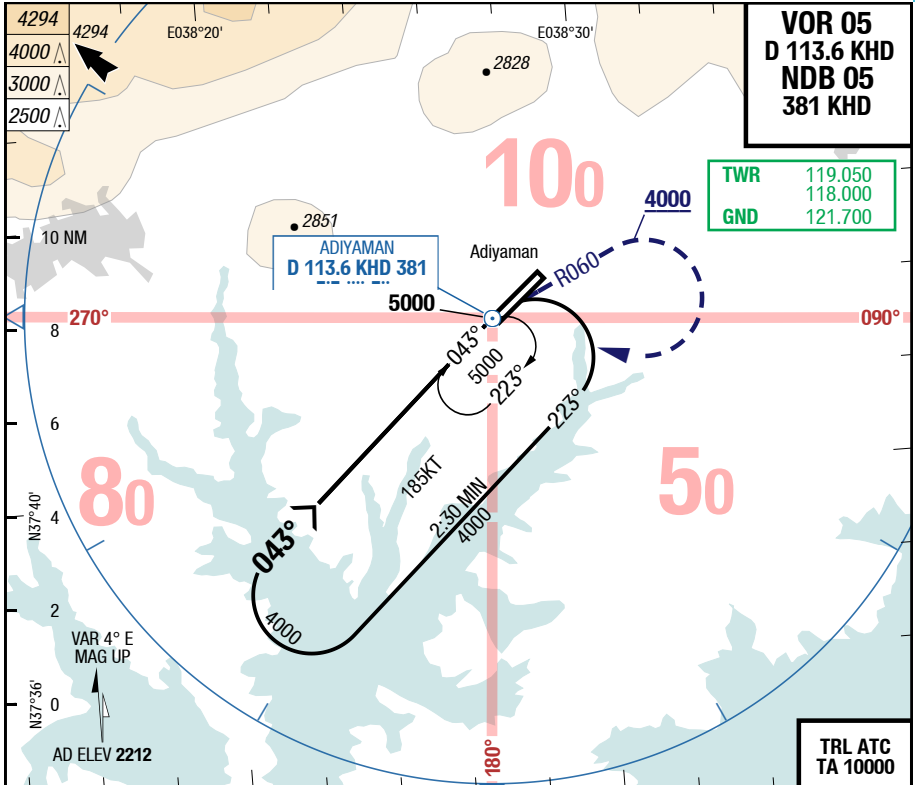
Turkey Adiyaman

ADF-LTCP

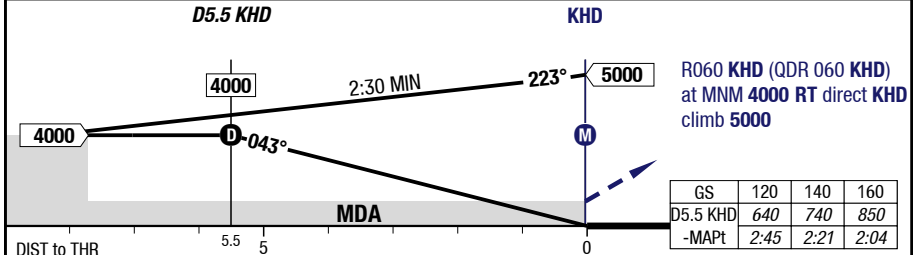
7-40

VOR 05 / NDB 05

IAC



3.00° D KHD	5.5	5	4	3	2	05	83.0° 2500 x 45 60 HL	
043°	4000	3850	3530	3220	2900			
RWY 045°							HL-SF	THR 2198 (77hPa) / TDZ 2198 (---%) ±0.1%



		D5.5 KHD				KHD	
DIST TO THR		5.5	5			0	
05	VOR	VOR APL U/S	NDB	NDB APL U/S	Circling		
	C	ft - m/km ft	510 - 2.7V 2700	510 - 2.9V 2700	510 - 2.7V 2700	510 - 2.9V 2700	1090 - 4.8V 3300
D	ft - m/km ft	510 - 2.7V 2700	510 - 2.9V 2700	510 - 2.7V 2700	510 - 2.9V 2700	1090 - 4.8V 3300	

Changes: APL, ALT, MISAP text, Editorial

THIS CHART IS A PART OF NAVIGRAPH CHARTS AND IS INTENDED FOR FLIGHT SIMULATION USE ONLY