

GENERAL

ATS Hours

See NOTAM.

Airport Information

RFF: CAT 7
PCN: RWY 05/23: 110/R/D/W/T
LCN: RWY 05/23: 120

Operation

TWY Restriction
 TWY width 15m / 49ft.

Warnings

SIN VOR/DME unusable: R100-R225 beyond 25NM below FL100.
 Highway 80m ahead RWY 23. All vehicles using the highway constitute obstacle for ACFT OPS.

ARRIVAL

Speed

MAX IAS 250KT within TMA at or below FL100 (refer to RFCs)

Arrival Procedure

Circling APCH southeast of AD prohibited.

DEPARTURE

Take-off Minima

RWY		05/23	
All ACFT	ft - m/km	0 - 400V	-

Speed

MAX IAS 250KT within TMA at or below FL100 (refer to RFCs)

ATC Clot, Clearance

Start-up: For start-up PROCs see CRAR Turkey.

De-icing

See NOTAM.

Effective 23-JUL-2015

16-JUL-2015

NOP-LTCM

3-20

Turkey Sinop

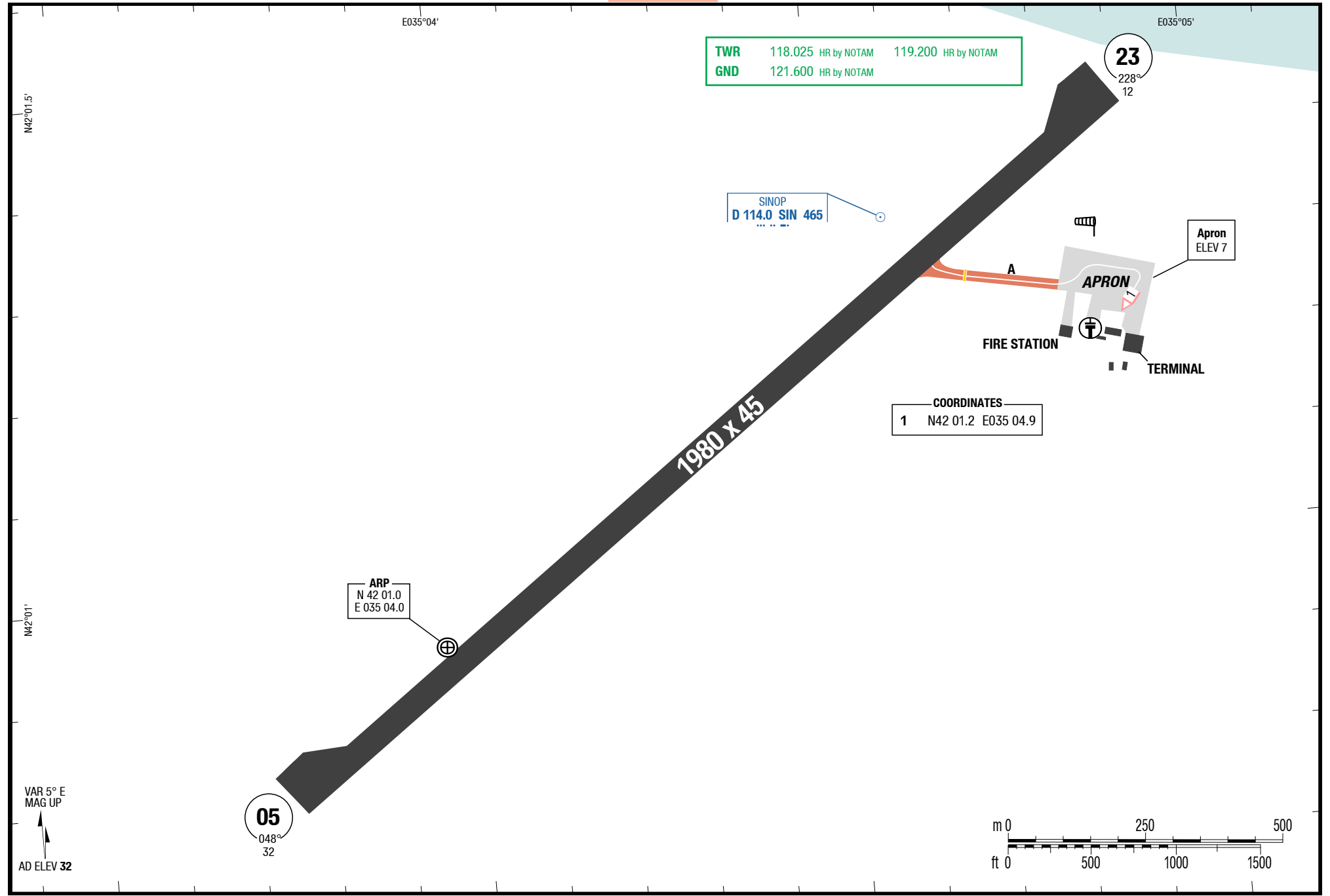
AGC

AGC

AGC

Sinop Turkey

AGC



Changes: FREQ

THIS CHART IS A PART OF NAVIGRAPH CHARTS AND IS INTENDED FOR FLIGHT SIMULATION USE ONLY

Effective 23-JUL-2015

16-JUL-2015

NOP-LTCM

4-10

Turkey Sinop

SIDs RWY 23

SIDs RWY 05

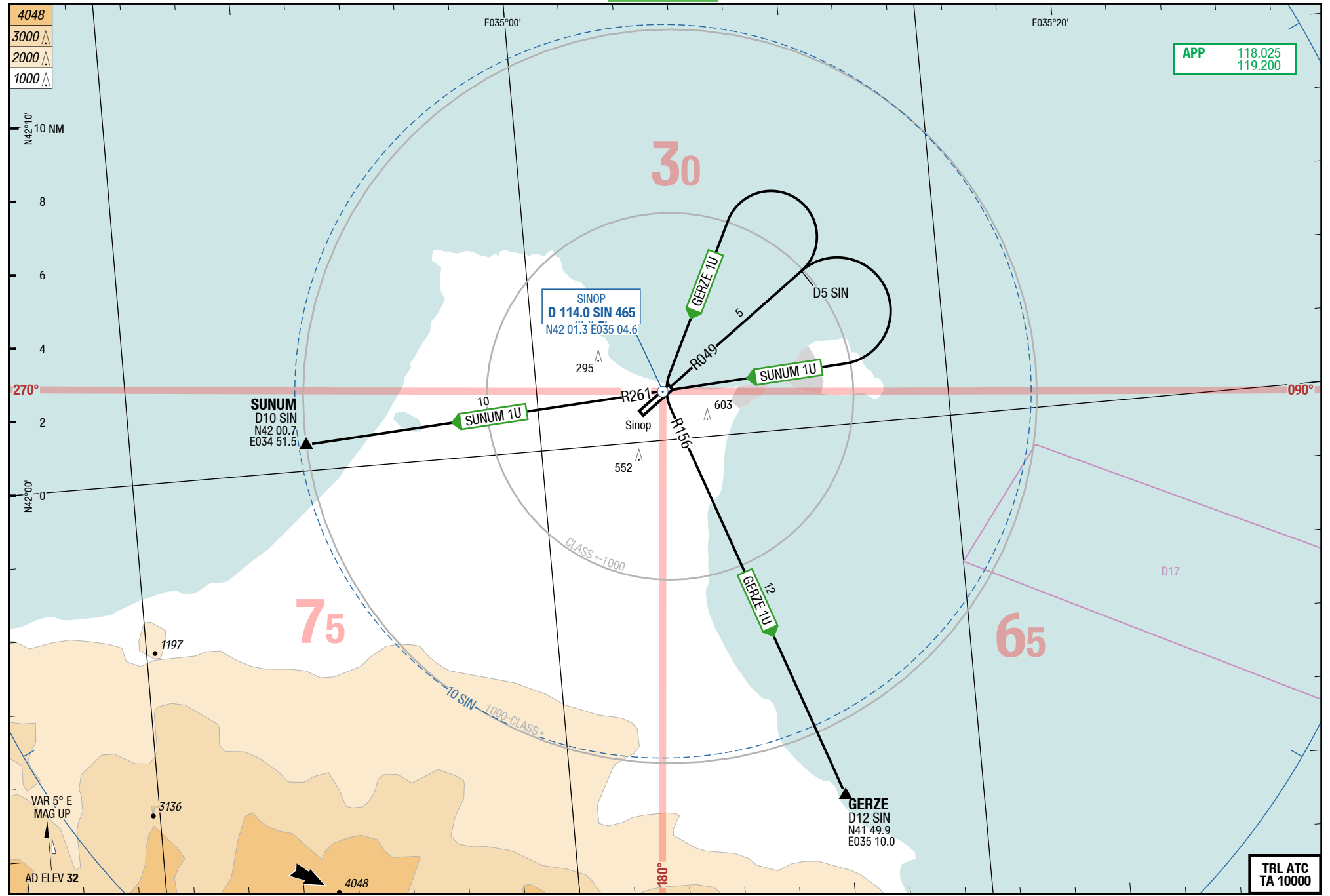
SID

SID

Sinop Turkey

SIDs RWY 23

SIDs RWY 05



Changes: FREQ

THIS CHART IS A PART OF NAVIGRAPH CHARTS AND IS INTENDED FOR FLIGHT SIMULATION USE ONLY

Effective 23-JUL-2015

16-JUL-2015

NOP-LTCM

4-20

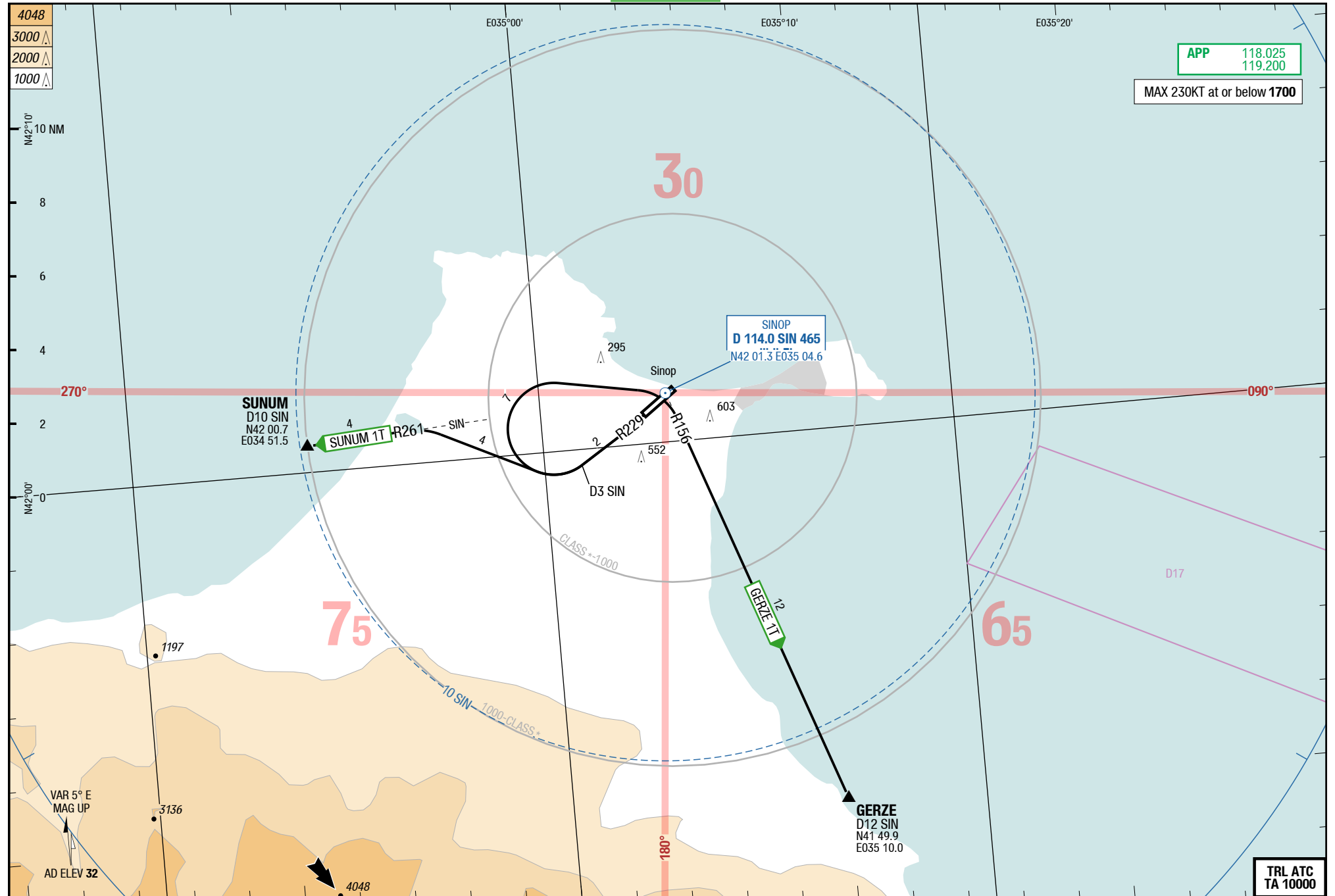
Turkey Sinop

SIDs RWY 23

SID SID

Sinop Turkey

SIDs RWY 23



Changes: FREQ

THIS CHART IS A PART OF NAVIGRAPH CHARTS AND IS INTENDED FOR FLIGHT SIMULATION USE ONLY

GERZE 1U / SUNUM 1U		
RWY 05 (048°)		
DESIGNATOR	ROUTING	ALTITUDES
	Runway 05	
GERZE 1U 119.200	intercept R049 SIN - at D5 SIN LT direct SIN - R156 SIN to GERZE	
SUNUM 1U 119.200	intercept R049 SIN - at D5 SIN RT direct SIN - R261 SIN to SUNUM	

Changes: Nil

GERZE 1T / SUNUM 1T

RWY 23 (228°)

	GS	120	150	180	210	240	270
5.0%	ft/MIN	700	800	1000	1100	1300	1400

DESIGNATOR	ROUTING	ALTITUDES
	Runway 23	
GERZE 1T 5.0% to 10000 119.200 ①	intercept R229 SIN - at D3 SIN RT direct SIN - R156 SIN to GERZE	
SUNUM 1T 5.0% to 7000 119.200 ①	intercept R229 SIN - at D3 SIN RT intercept R261 SIN to SUNUM	

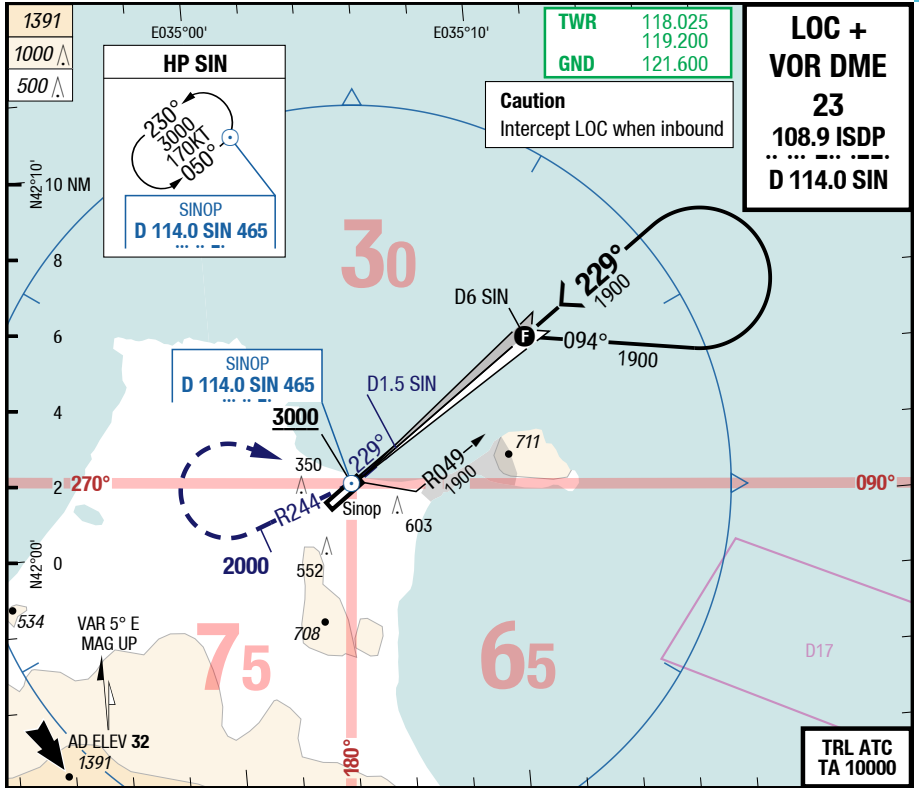
① Max 230KT at or below 1700

Changes: PROC, Climb gradient

NOP-LTCM

7-10

LOC + VOR DME 23



LOC + VOR DME 23
108.9 ISDP
D 114.0 SIN

TWR 118.025
GND 119.200
121.600

Caution
 Intercept LOC when inbound

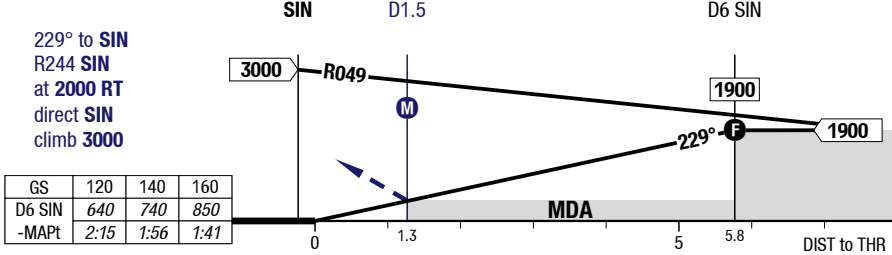
HP SIN
 230°
 3000
 1000
 0500
SINOP
D 114.0 SIN 465

SINOP
D 114.0 SIN 465
3000

VAR 5° E
MAG UP
AD ELEV 32
1391

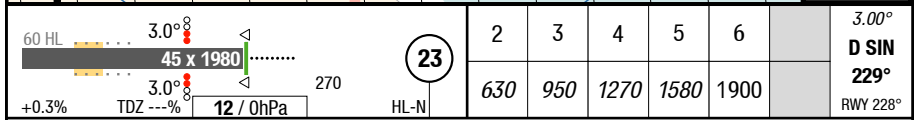
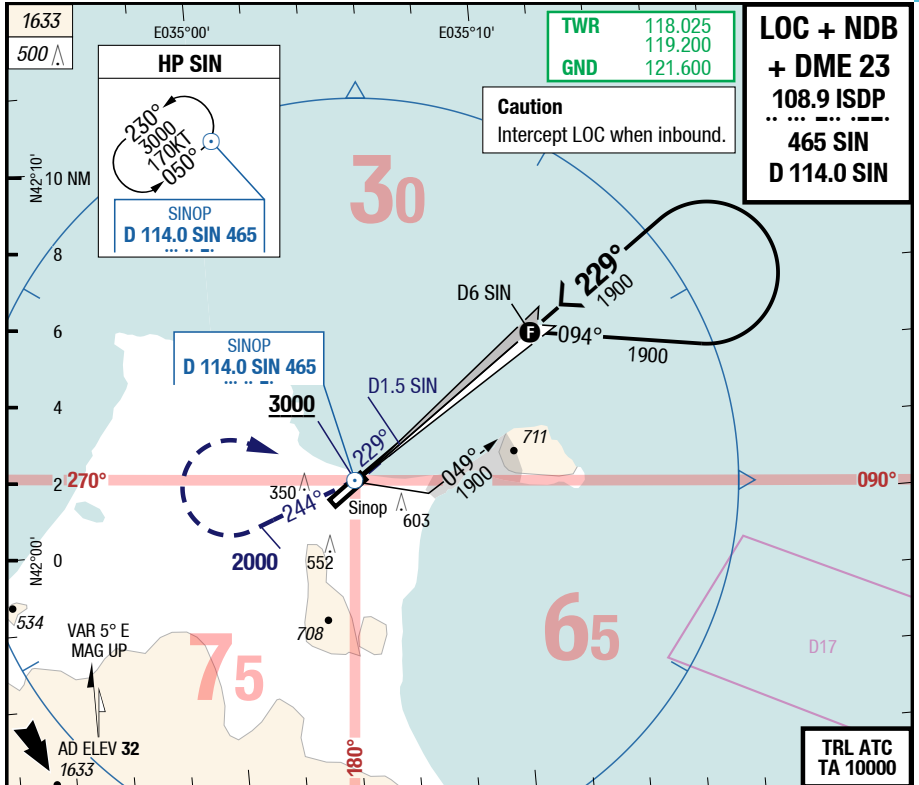
TRL ATC
TA 10000

60 HL	3.0°	45 x 1980	270	23	2	3	4	5	6	3.00°
+0.3%	TDZ ---%	12 / 0hPa	HL-N		630	950	1270	1580	1900	D SIN
										229°
										RWY 228°



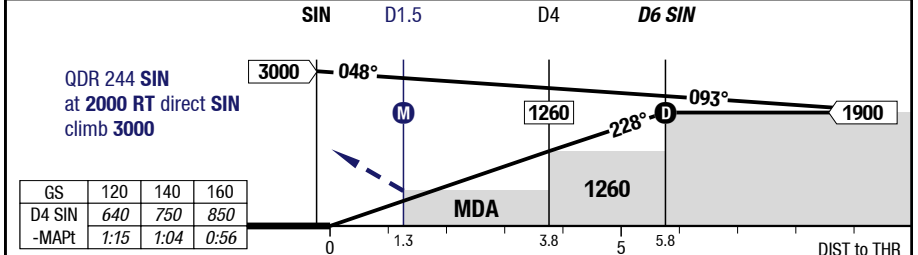
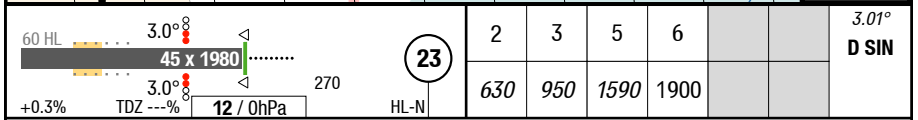
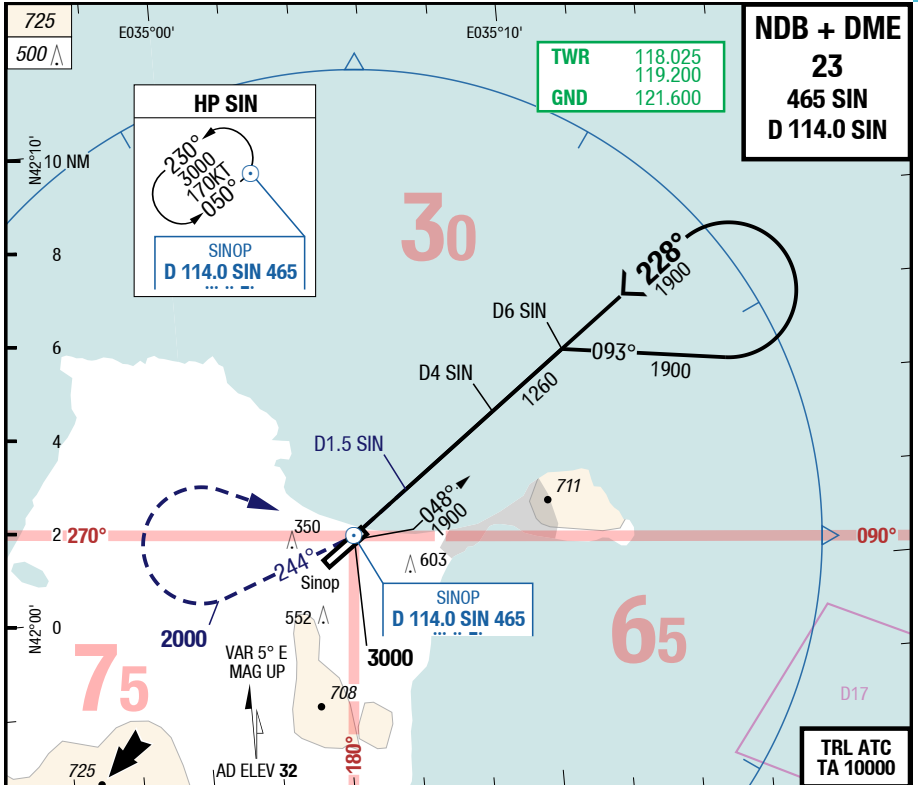
23	LOC VOR DME SIN	LOC VOR DME SIN APL U/S			Circling NW of AD only
C	ft - m/km ft 440 - 2.2V 450	440 - 2.5V 450			1120 - 5.0V 1150
D	ft - m/km ft Not published				1120 - 5.0V 1150

Changes: MIN



23	LOC NDB DME SIN		LOC NDB DME SIN APL U/S		Circling NW of AD only
	C	ft - m/km ft	440 - 2.2V 450	440 - 2.5V 450	
D	ft - m/km ft	440 - 2.2V 450	440 - 2.5V 450	1120 - 5.0V 1150	

Changes: MIN



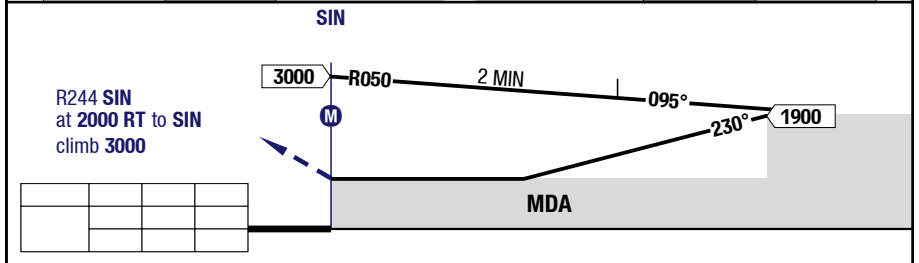
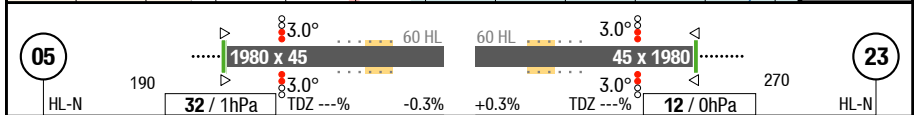
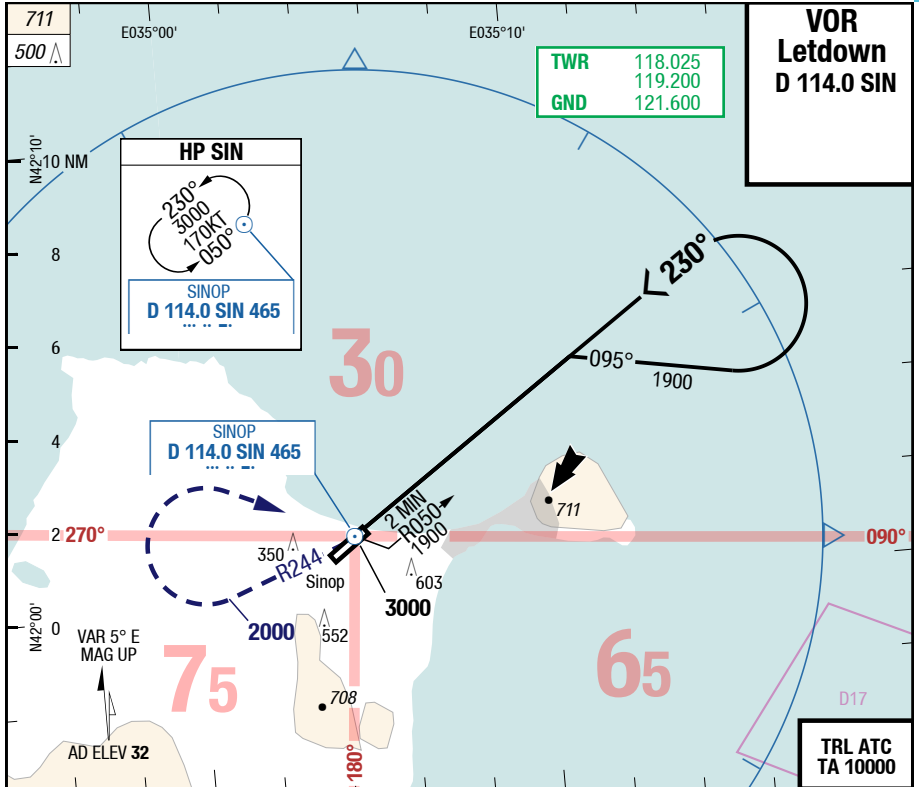
23		NDB DME SIN	NDB DME SIN APL U/S			Circling NW of AD only
C	ft - m/km	600 - 2.9V	600 - 3.2V			1120 - 5.0V
	ft	610	610			1150
D	ft - m/km	600 - 2.9V	600 - 3.2V			1120 - 5.0V
	ft	610	610			1150

Changes: FREQ, APL

NOP-LTCM

7-50

VOR Letdown



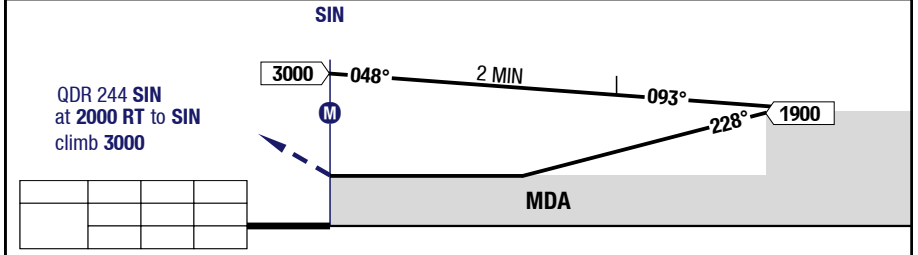
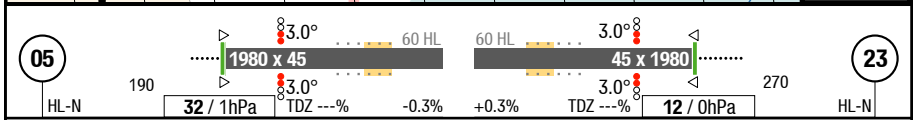
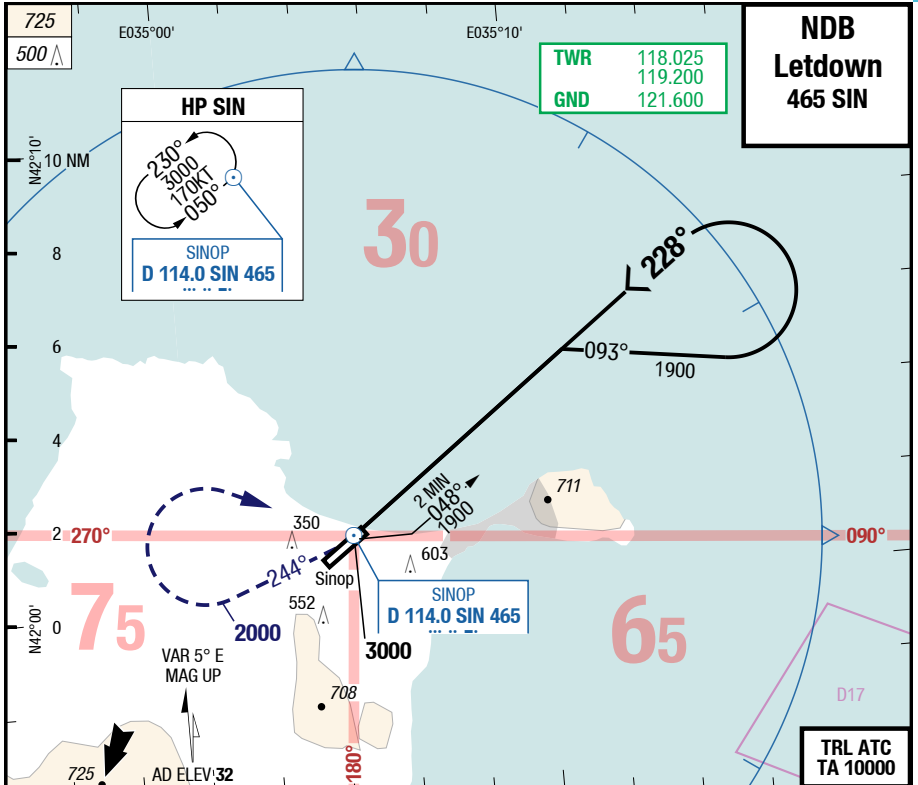
05/23		Letdown VOR				Circling NW of AD only
C	ft - m/km ft	Straight-in Not authorized				1120 - 5.0V 1150
D	ft - m/km ft	Straight-in Not authorized				1120 - 5.0V 1150

Changes: FREQ, APL

NOP-LTCM

7-60

NDB Letdown



05/23		Letdown NDB				Circling NW of AD only
C	ft - m/km ft	Straight-in Not authorized				1120 - 5.0V 1150
D	ft - m/km ft	Straight-in Not authorized				1120 - 5.0V 1150

Changes: FREQ, APL