

GENERAL

ATS Hours

See NOTAM.

Airport Information

RFF: CAT 7
Fuel: JP-8
LCN: RWY 11L/29R: 50

Operation

TWY Restrictions
 TWY D, E width 12m / 39ft.

Warnings

MUS VOR/DME unusable: R160-R260 beyond 10NM below 12000ft.
MUS NDB unusable: 160°-260° beyond 10NM below 12000ft.

ARRIVAL

Speed

MAX IAS 250KT within TMA at or below FL100. (refer to RFCs)

DEPARTURE

Take-off Minima

RWY		11L/29R	
All ACFT	ft - m/km	0 - 500R/500V	HJ only
		0 - 800R/800V	HN

Speed

MAX IAS 250KT within TMA at or below FL100. (refer to RFCs)

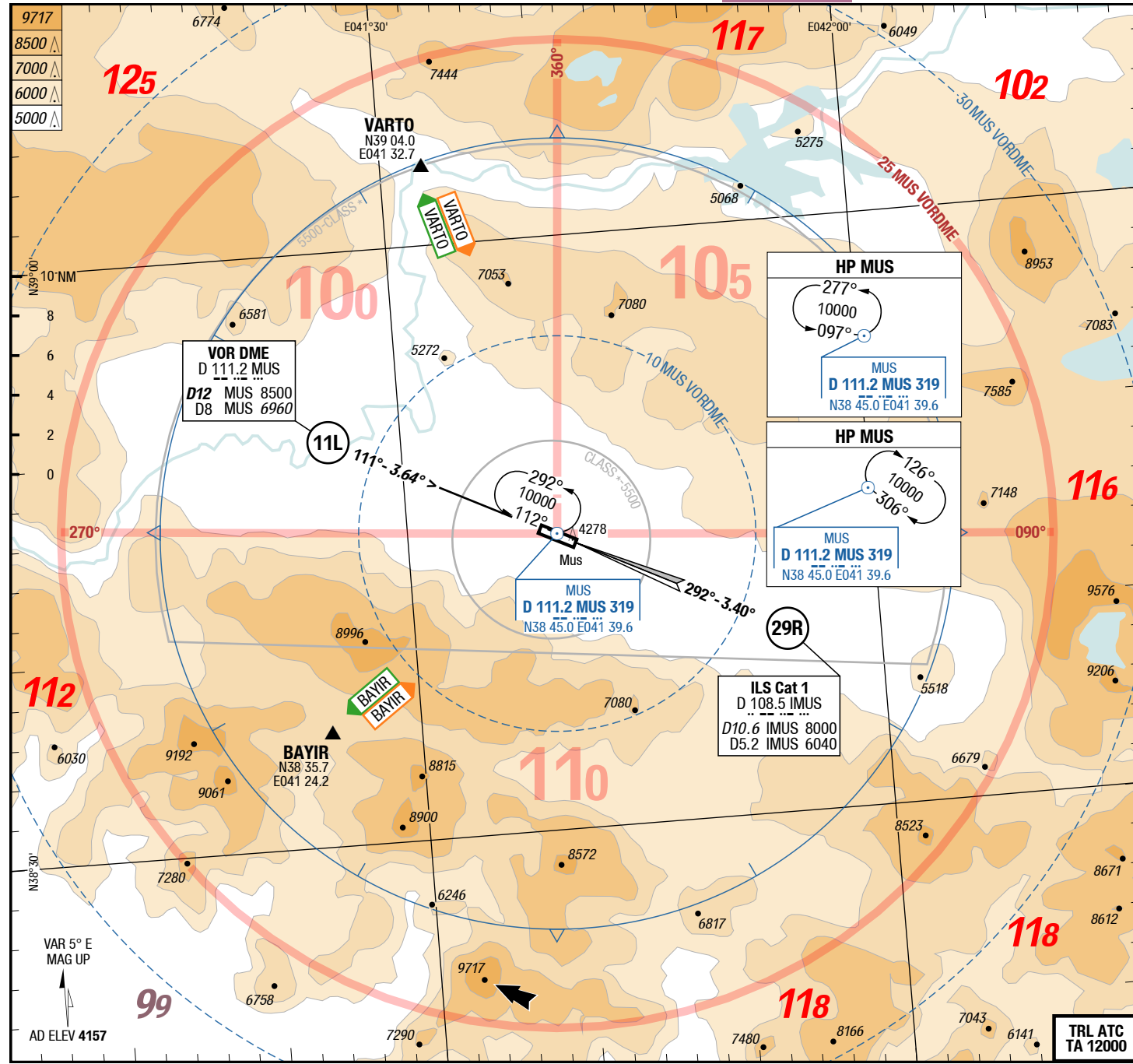
ATC Slot, Clearance

Start-up: For start-up PROCs see CRAR Turkey.

De-icing

See NOTAM.

2-10

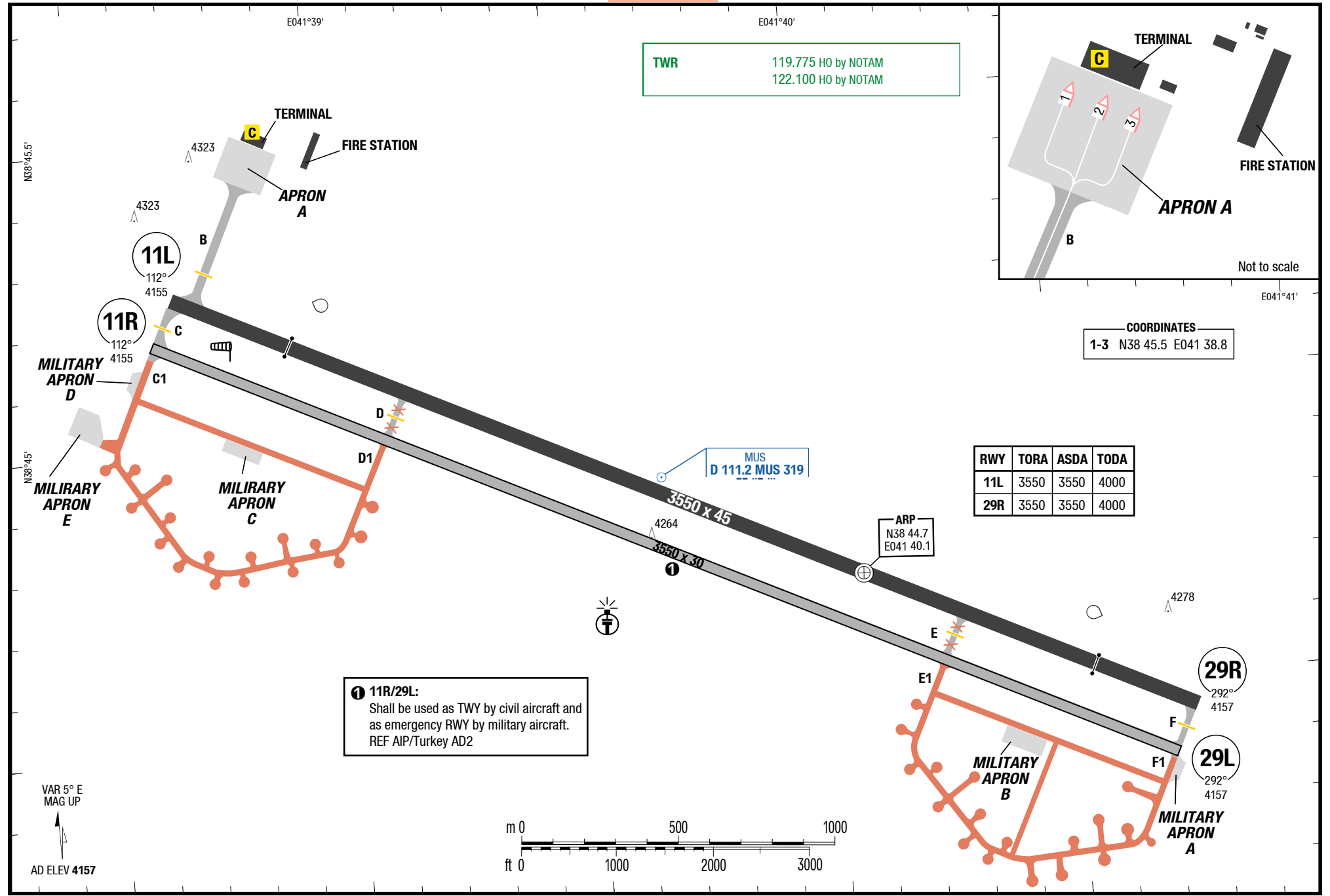


APP	119.775 HRS by NOTAM	122.100 HRS by NOTAM
TWR	119.775 HRS by NOTAM	122.100 HRS by NOTAM

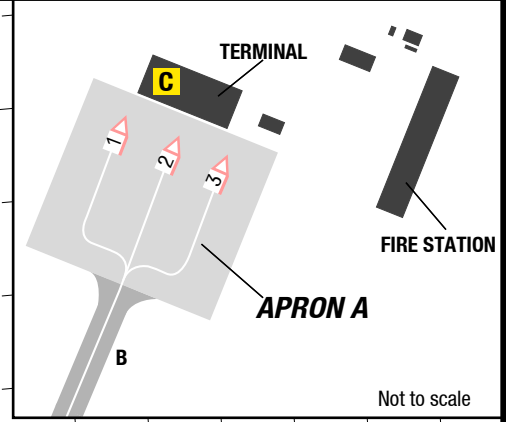
Landing RWY system:

11L	3550 x 45	2.6°	60 HL
	4155 / 141hPa	2.6°	TDZ ---% 0.0%
29R	45 x 3550	3.4°	60 HL
	4157 / 141hPa	3.4°	TDZ ---% HL-P1
11R	3550 x 30		60
	4155 / 141hPa		TDZ ---% 0.0%
29L	30 x 3550		60
	4157 / 141hPa		TDZ ---% 0.0%

Changes: APL, RWY Designator, OBST, Editorial



11R/29L:
 Shall be used as TWY by civil aircraft and as emergency RWY by military aircraft.
 REF AIP/Turkey AD2



COORDINATES
 1-3 N38 45.5 E041 38.8

4-10

Turkey Mus

NIL

SIDs

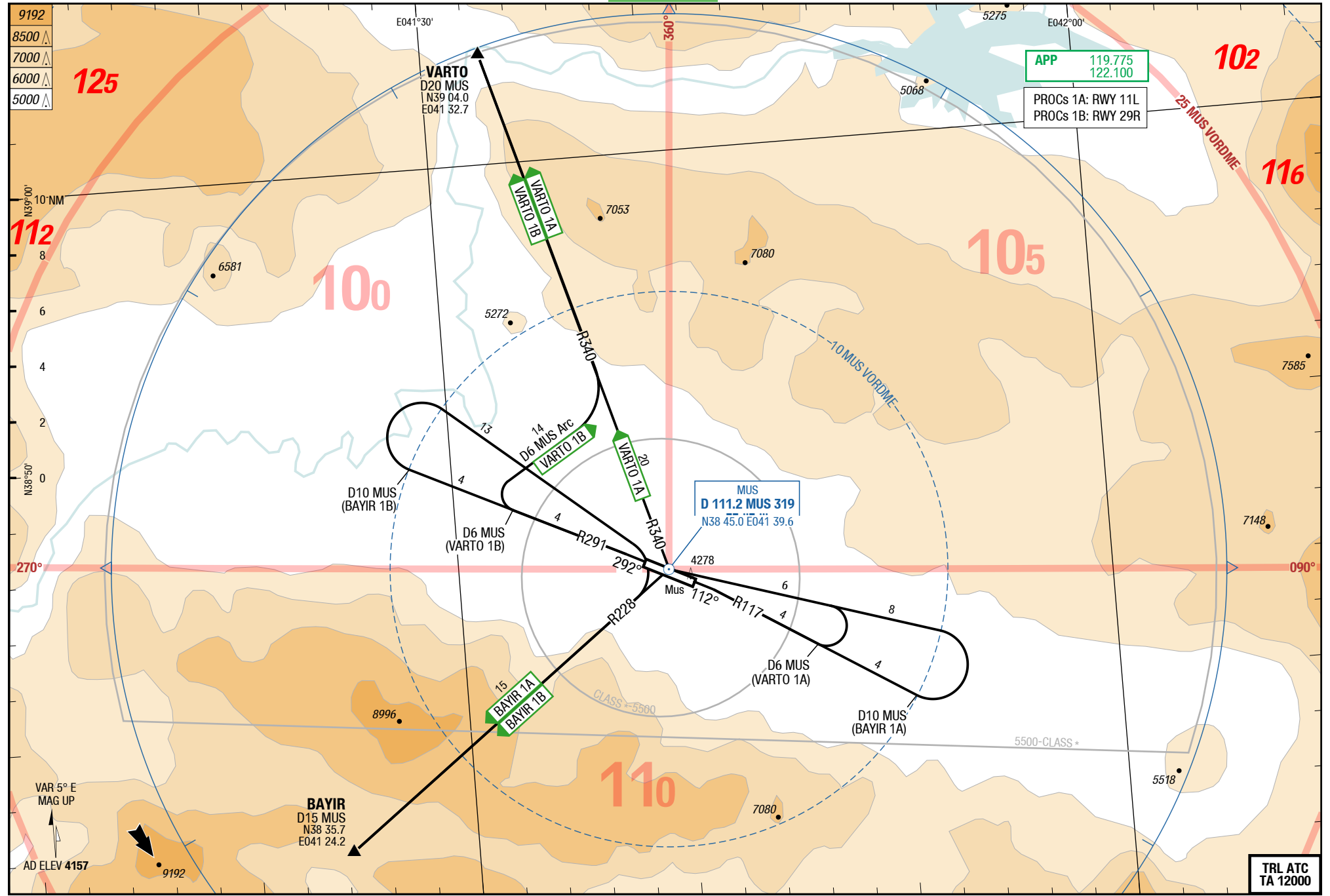
SID

SID

Mus Turkey

NIL

SIDs



Changes: Track, RWY Designator, OBST, Editorial

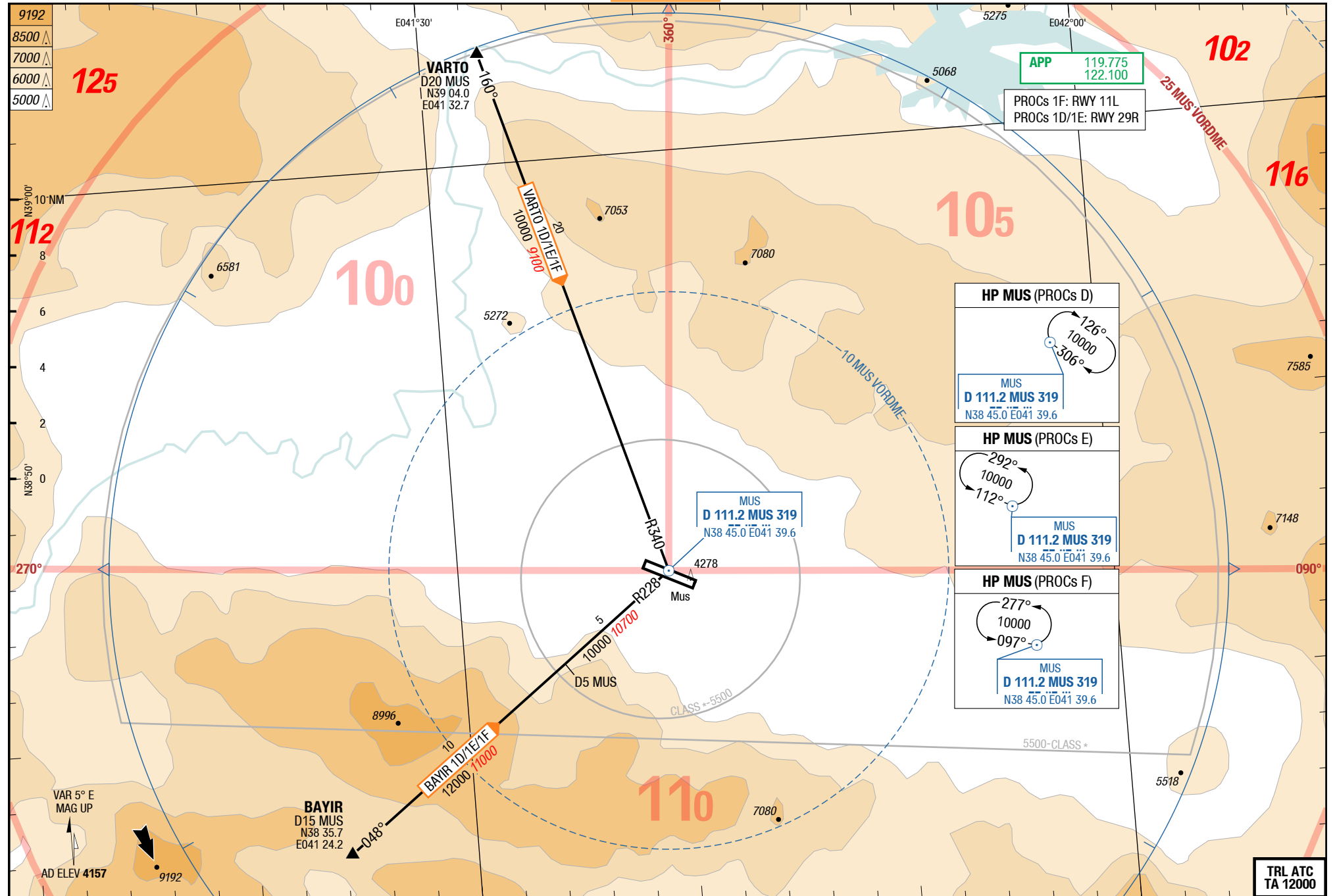
TRL ATC
TA 12000

BAYIR 1A / VARTO 1A / BAYIR 1B / VARTO 1B

RWYs 11L (112°) / 29R (292°)

	GS	120	150	180	210	240	270
5.0%	ft/MIN	700	800	1000	1100	1300	1400
5.4%	ft/MIN	700	900	1000	1200	1400	1500

DESIGNATOR	ROUTING	ALTITUDES
	Runway 11L	
BAYIR 1A 5.4% 119.775	intercept R117 MUS - at D10 MUS LT direct MUS - R228 MUS to BAYIR	
VARTO 1A 5.0% 119.775	intercept R117 MUS - at D6 MUS LT direct MUS - R340 MUS to VARTO	
	Runway 29R	
BAYIR 1B 5.4% 119.775	intercept R291 MUS - at D10 MUS RT direct MUS - R228 MUS to BAYIR	
VARTO 1B 5.0% 119.775	intercept R291 MUS - at D6 MUS RT follow D6 MUS Arc- LT intercept R340 MUS to VARTO	

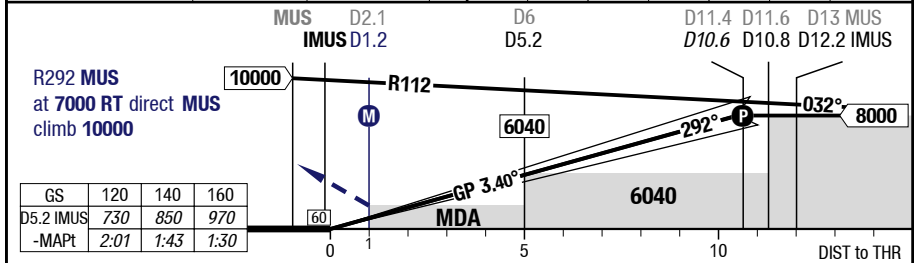
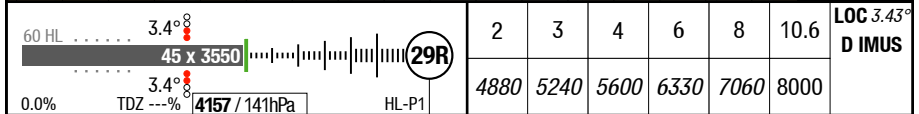
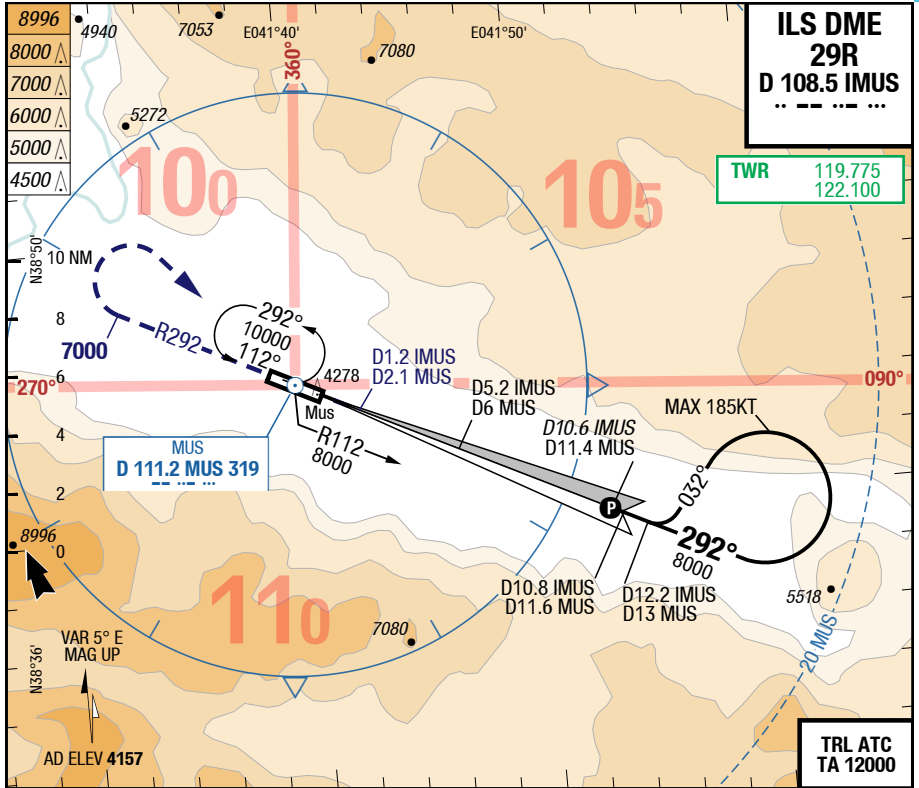


Changes: RWY Designator, Track, OBST, Editorial

MSR-LTCK

7-10

ILS DME 29R



29R		Cat 1 DME 1)	LOC DME				Circling N of AD only
C	ft - m/km ft	210 - 550 4360	450 - 1.4 4600				1370 - 2.4V 5520
D	ft - m/km ft	210 - 550 4360	450 - 1.4 4600				1370 - 3.6V 5520

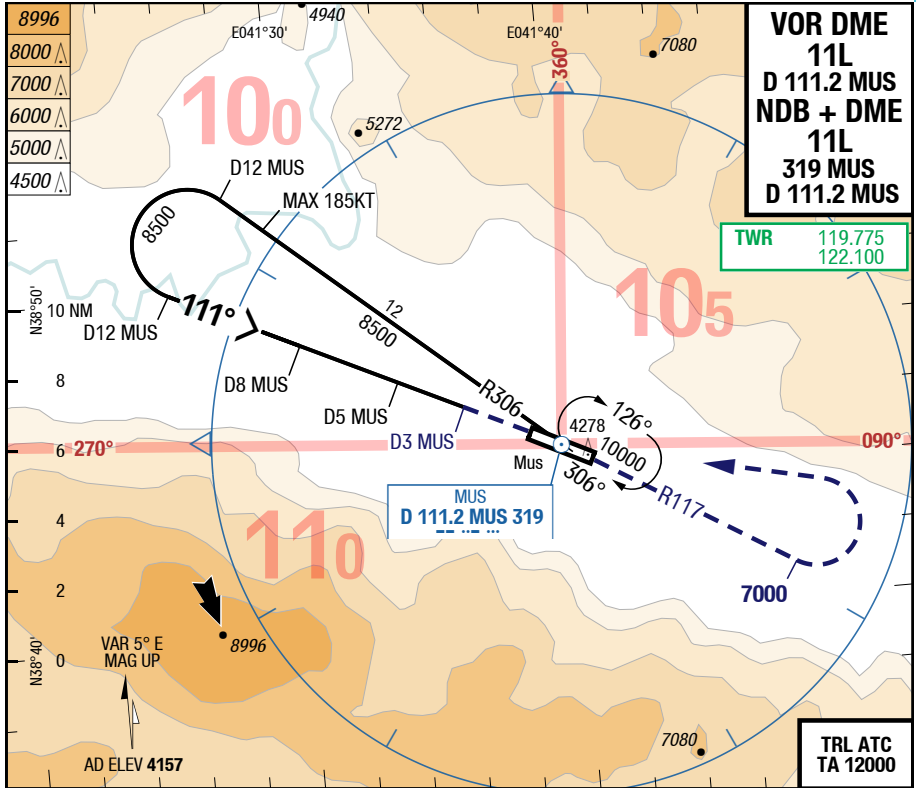
1) FD, AP or HGS required, else RVR 750m

Changes: RWY Designator, APL, DIST ALT table, MIN

MSR-LTCK

7-20

VOR DME 11L / NDB + DME 11L

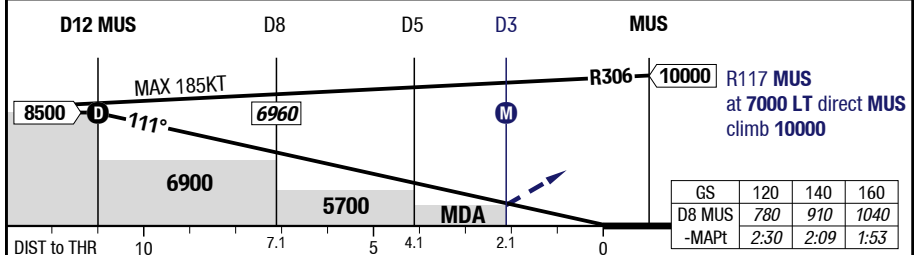


VOR DME 11L
D 111.2 MUS
NDB + DME 11L
319 MUS
D 111.2 MUS

TWR 119.775
 122.100

TRL ATC
TA 12000

3.64°	12	10	9	7	6	4	11L	2.6°	60 HL
D MUS	8500	7710	7320	6550	6160	5390		3550 x 45	
111°								2.6°	
RWY 112°								TDZ ---%	0.0%



GS	120	140	160
D8 MUS	780	910	1040
-MAPt	2:30	2:09	1:53

11L		VOR DME	VOR DME	NDB DME	NDB DME	Circling N of AD only
		APL U/S		MUS		
C	ft - m/km	750 - 3.9V	750 - 4.1V	750 - 3.9V	750 - 4.1V	1150 - 5.0V
	ft	4900	4900	4900	4900	5300
D	ft - m/km	750 - 3.9V	750 - 4.1V	750 - 3.9V	750 - 4.1V	1370 - 5.0V
	ft	4900	4900	4900	4900	5520

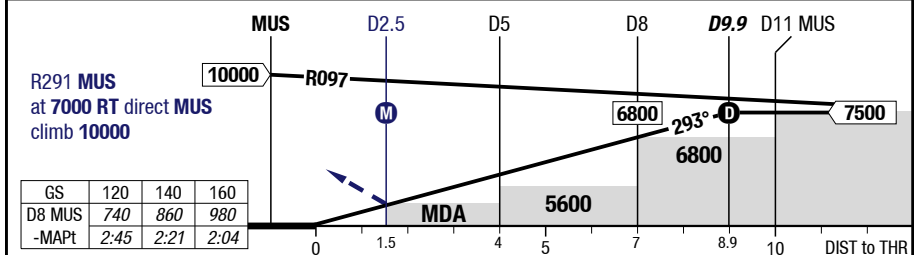
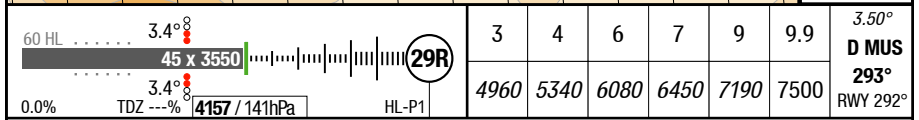
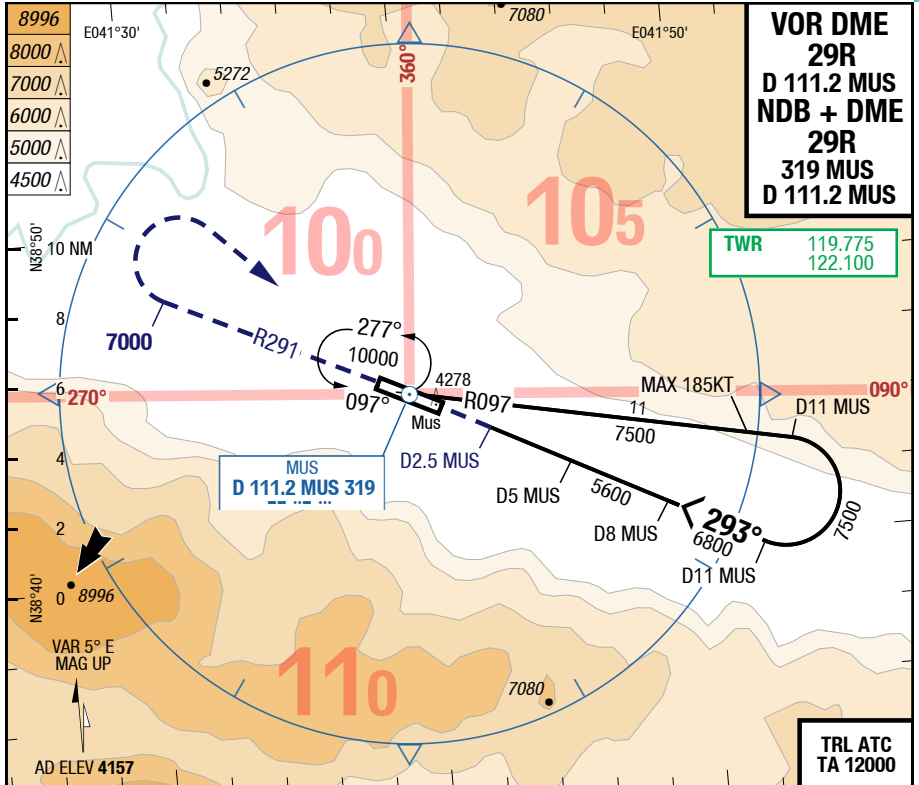
Changes: RWY Designator, DIST ALT table, APL, MIN, OBST

THIS CHART IS A PART OF NAVIGRAPH CHARTS AND IS INTENDED FOR FLIGHT SIMULATION USE ONLY

MSR-LTCK

7-30

VOR DME 29R / NDB + DME 29R



29R		VOR DME	VOR DME	NDB DME	NDB DME	Circling
			APL U/S	MUS	MUS	N of AD only
C	ft - m/km ft	450 - 1.6V 4600	450 - 2.3V 4600	450 - 1.6V 4600	450 - 2.3V 4600	1150 - 5.0V 5300
D	ft - m/km ft	450 - 1.6V 4600	450 - 2.3V 4600	450 - 1.6V 4600	450 - 2.3V 4600	1370 - 5.0V 5520

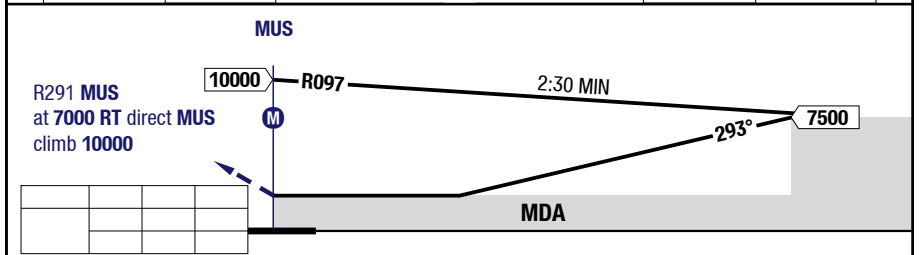
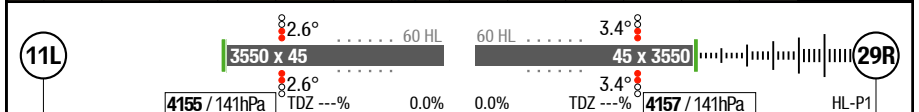
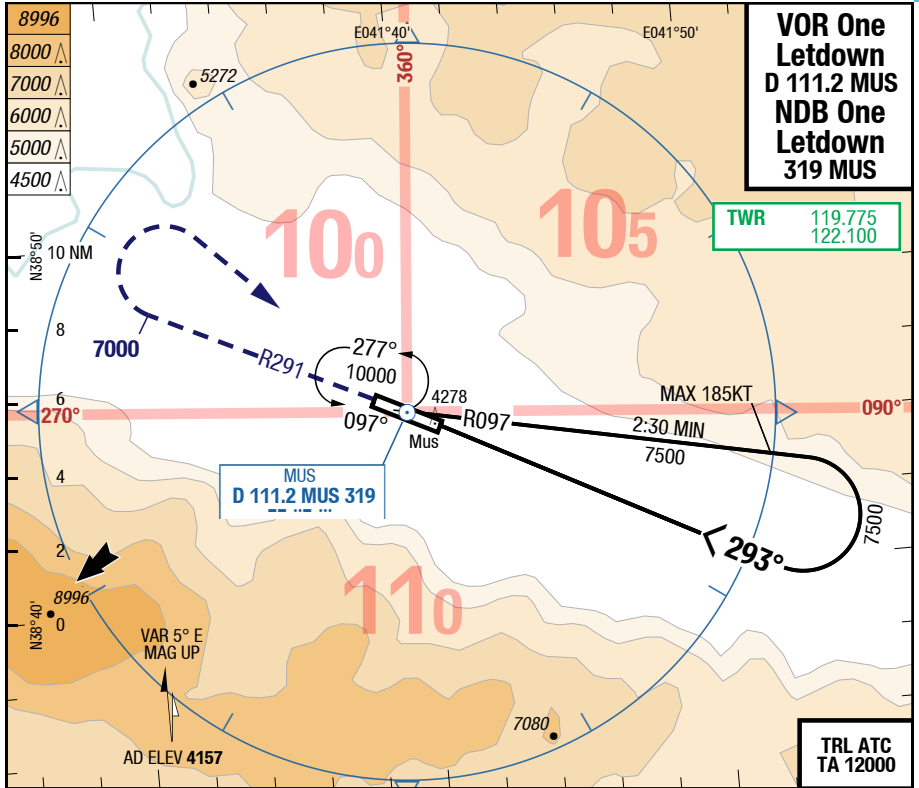
Changes: RWY Designator, APL, DIST ALT table, MIN, OBST

THIS CHART IS A PART OF NAVIGRAPH CHARTS AND IS INTENDED FOR FLIGHT SIMULATION USE ONLY

MSR-LTCK

7-40

VOR One Letdown / NDB One Letdown



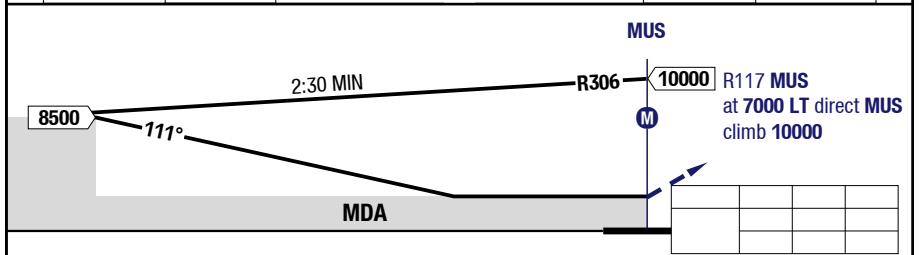
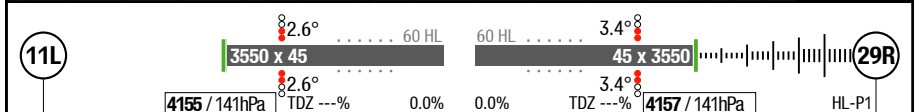
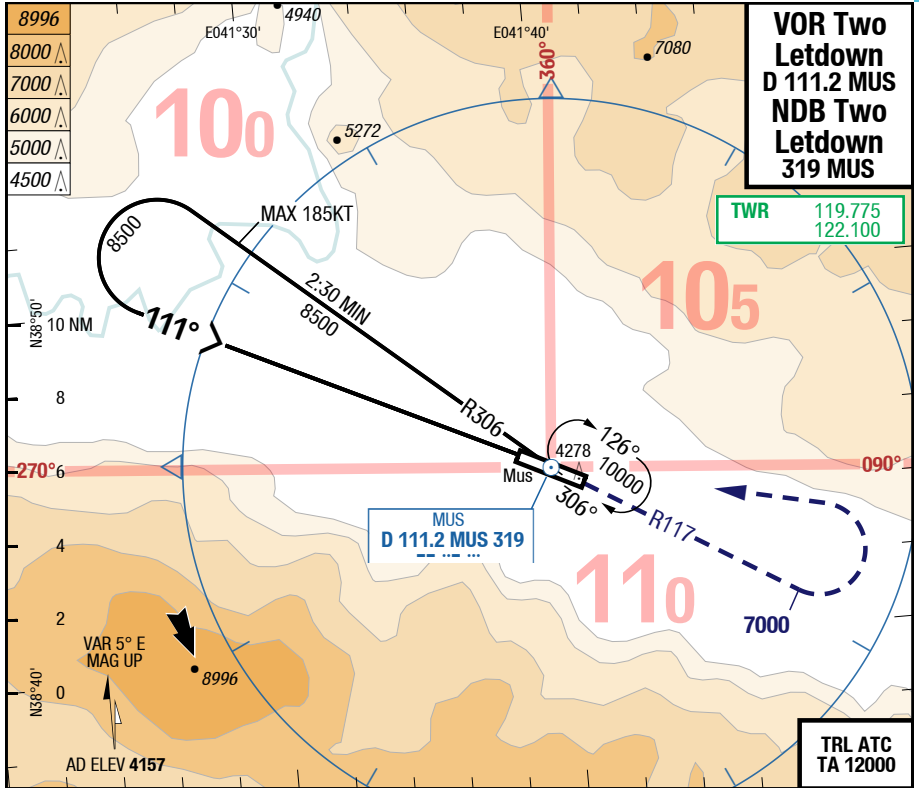
11L/29R		Letdown VOR/NDB				Circling N of AD only
C	ft - m/km ft	Straight-in Not authorized				1150 - 5.0V 5300
D	ft - m/km ft	Straight-in Not authorized				1370 - 5.0V 5520

Changes: RWY Designator, APL, MIN, OBST

MSR-LTCK

7-50

VOR Two Letdown / NDB Two Letdown



11L/29R		Letdown VOR/NDB					Circling N of AD only
C	ft - m/km ft	Straight-in Not authorized					1150 - 5.0V 5300
D	ft - m/km ft	Straight-in Not authorized					1370 - 5.0V 5520

Changes: RWY Designator, APL, MIN, OBST