

18-JUN-2015

**KSY-LTCF**

1-10

**AOI****AOI****GENERAL****ATS Hours**

See NOTAM.

**Airport Information****RFF:** CAT 7**PCN:** RWY 06/24: 100/F/D/W/T**Warnings**

AD located 20NM W of Turkish border to Armenia.

**KAR VOR/DME, KAR NDB** unusable:

Between R071-R135 beyond 20NM.

**ARRIVAL****Speed**

MAX IAS 250KT within TMA at or below 10000ft (refer RFCs).

**DEPARTURE****Take-off Minima**

RWY		06/24	
All ACFT	ft - m/km	0 - 400R/400V	-

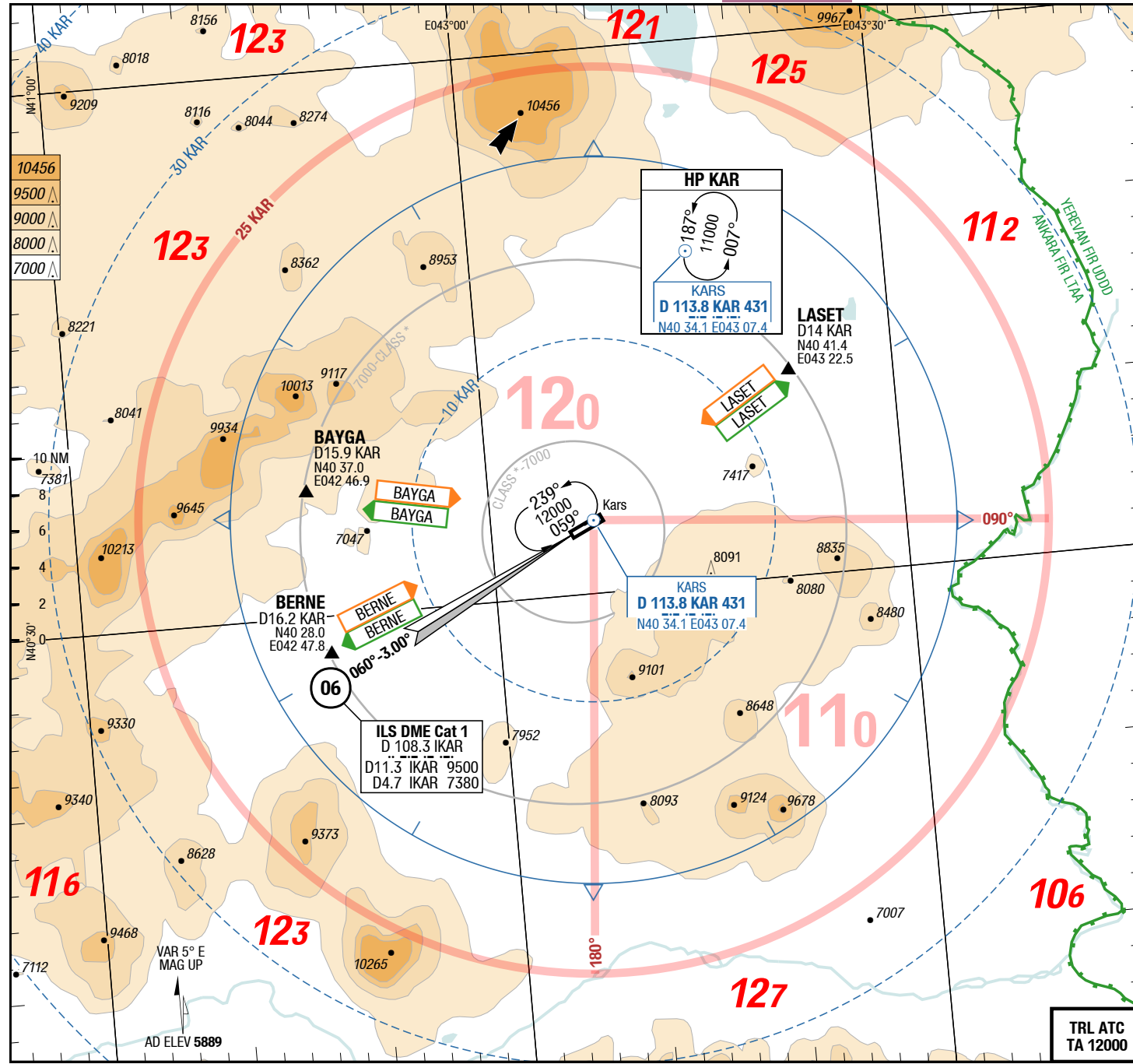
**Speed**

MAX IAS 250KT within TMA at or below 10000ft (refer RFCs).

**ATC Slot, Clearance****Start-up:** For start-up PROCs see CRAR Turkey.

Changes: AD Name

2-10



APP	118.000 HO	122.400
TWR	118.000 HO	122.400
GND	121.900 HO	

**Landing RWY system:**

**06**

HL-SF 450 5870 / 194hPa TDZ ---% -0.4%

3.0° 3.0° 60 HL

3500 x 45

**24**

60 HL 3.0° 3.0°

45 x 3500

+0.4% TDZ ---% 5868 / 194hPa HL-P1F

Changes: AD Name

Effective 23-JUL-2015

16-JUL-2015

KSY-LTCF

Turkey Kars Harakani

AGC

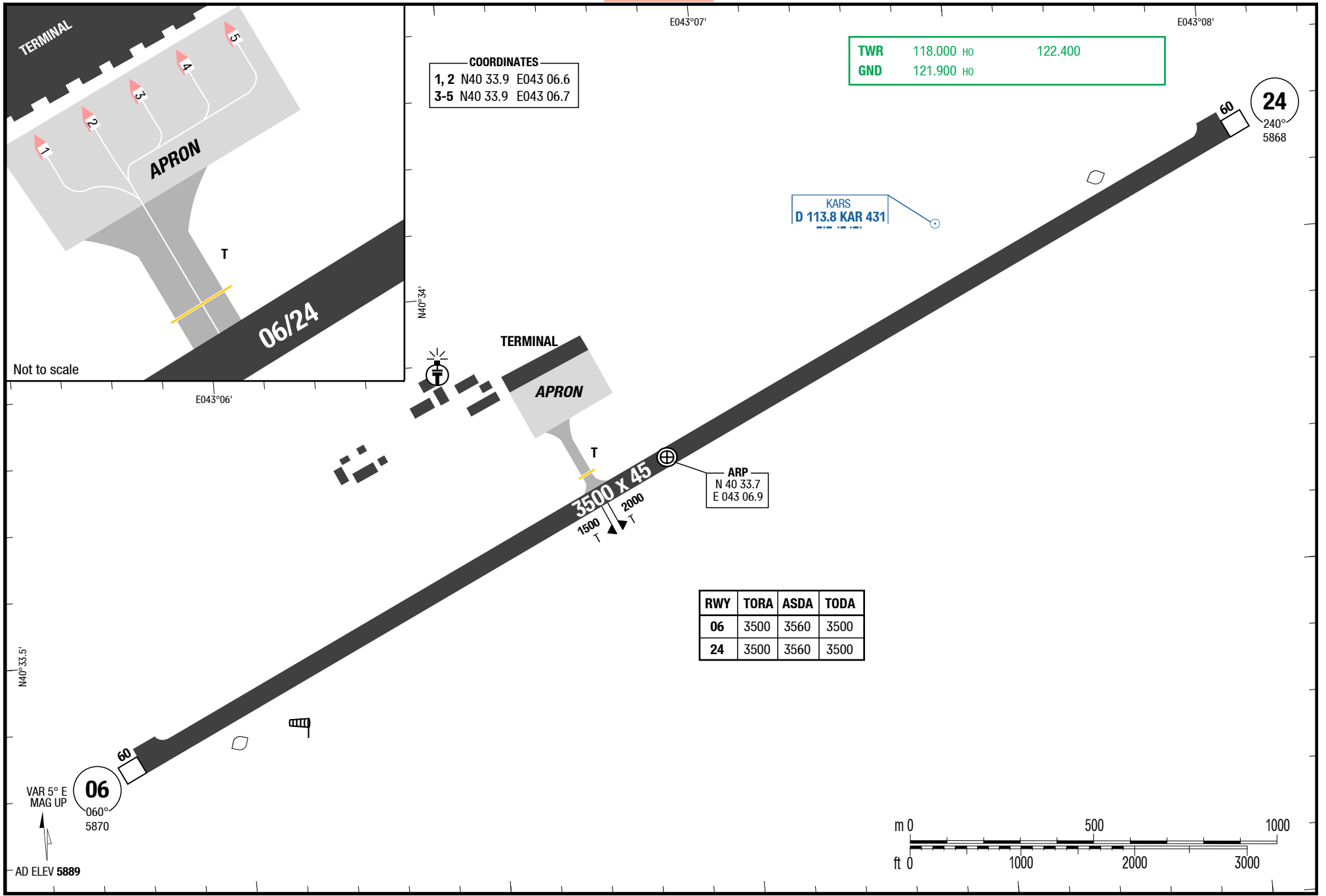
AGC

AGC

Harakani Kars Turkey

AGC

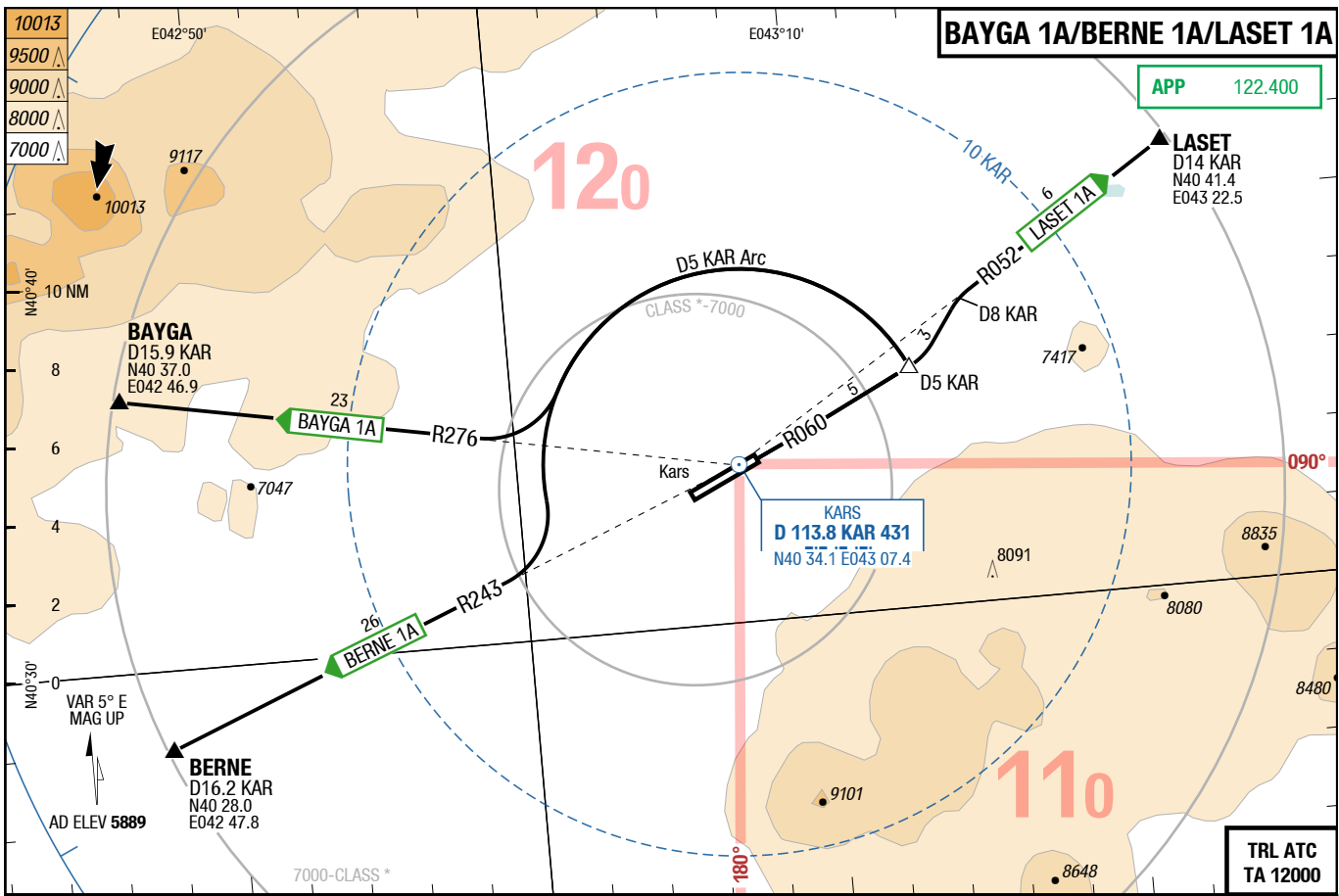
3-20



Changes: Declared distances, AD Name

THIS CHART IS A PART OF NAVIGRAPH CHARTS AND IS INTENDED FOR FLIGHT SIMULATION USE ONLY

**BAYGA 1A/BERNE 1A/LASET 1A**



THIS CHART IS A PART OF NAVIGRAPH CHARTS AND IS INTENDED FOR FLIGHT SIMULATION USE ONLY

Changes: AD Name

**BAYGA 1B/BERNE 1B/LASET 1B**

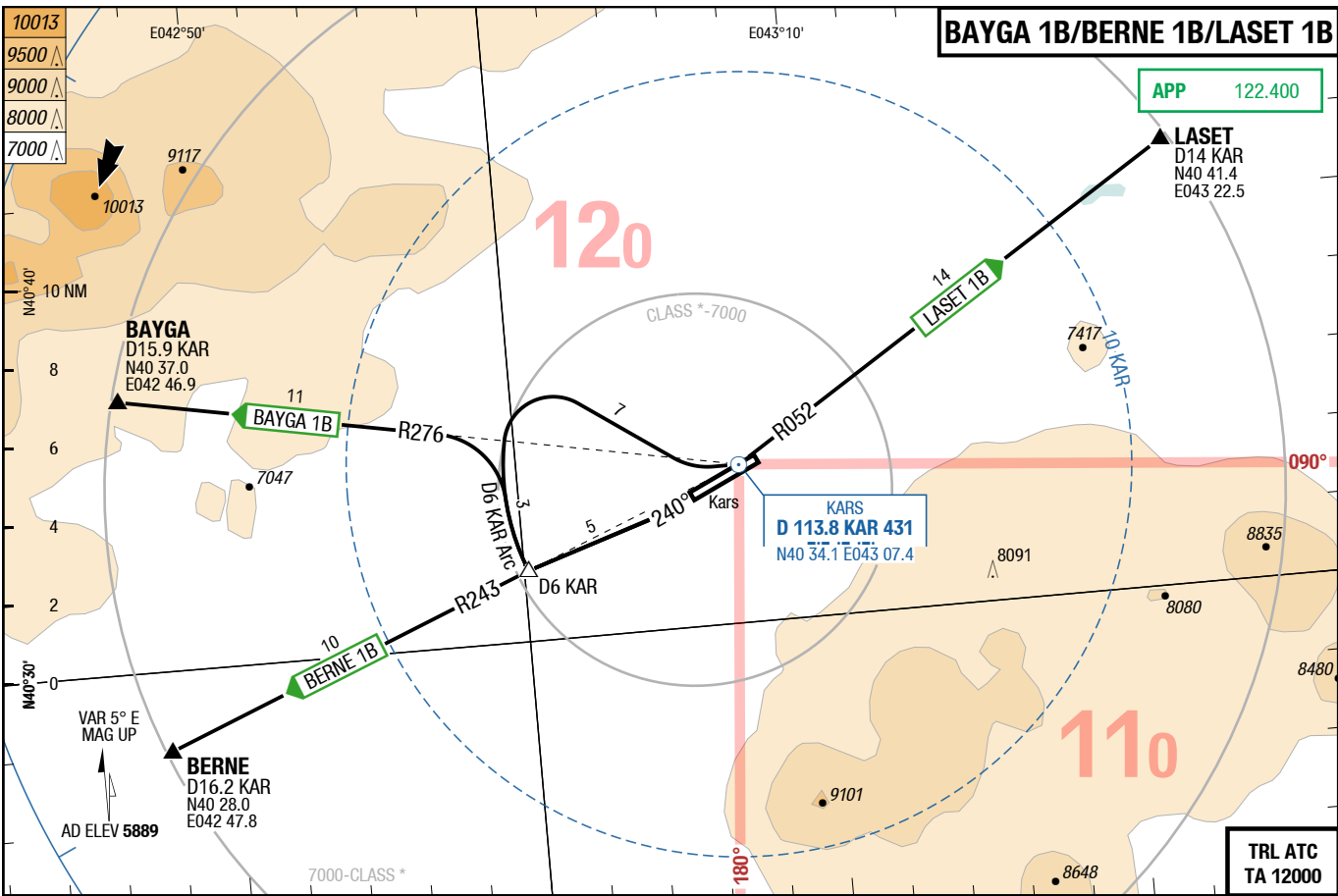
APP 122.400

**LASET**  
D14 KAR  
N40 41.4  
E043 22.5

**KARS**  
D 113.8 KAR 431  
N40 34.1 E043 07.4

**BAYGA**  
D15.9 KAR  
N40 37.0  
E042 46.9

**BERNE**  
D16.2 KAR  
N40 28.0  
E042 47.8



THIS CHART IS A PART OF NAVIGRAPH CHARTS AND IS INTENDED FOR FLIGHT SIMULATION USE ONLY

Changes: AD Name

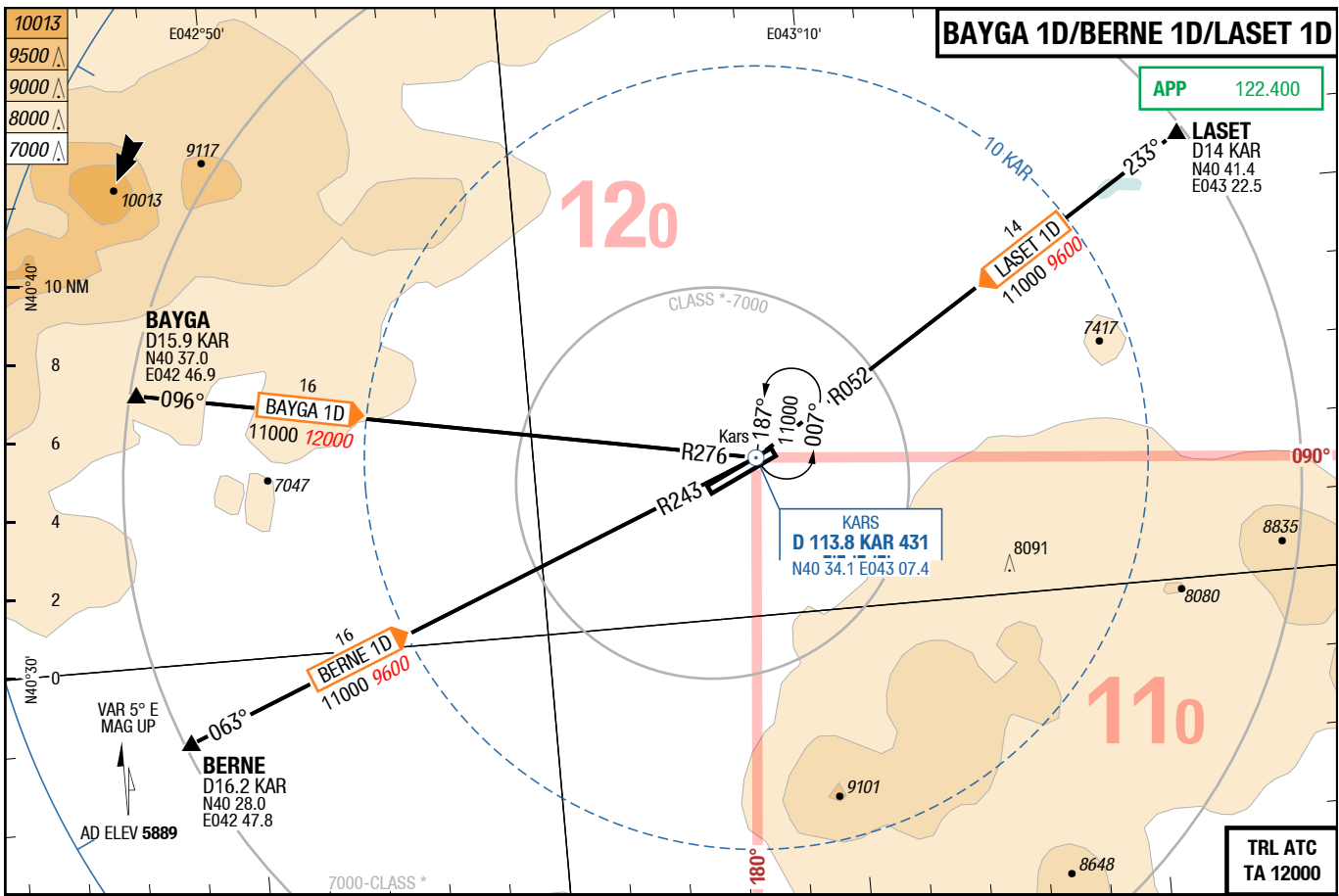
**BAYGA 1A / BERNE 1A / LASET 1A**  
RWY 06 (060°)

	GS	120	150	180	210	240	270
5.0%	ft/MIN	700	800	1000	1100	1300	1400

DESIGNATOR	ROUTING	ALTITUDES
	<b>Runway 06</b>	
<b>BAYGA 1A</b> 122.400	R060 <b>KAR</b> - at D5 <b>KAR LT</b> follow D5 <b>KAR</b> arc - intercept R276 <b>KAR</b> to BAYGA	
<b>BERNE 1A</b> 122.400	R060 <b>KAR</b> - at D5 <b>KAR LT</b> follow D5 <b>KAR</b> arc - intercept R243 <b>KAR</b> to BERNE	
<b>LASET 1A</b> 5.0% to FL150 122.400	R060 <b>KAR</b> - at D5 <b>KAR LT</b> intercept R052 <b>KAR</b> (within D8 <b>KAR</b> ) to LASET	

<b>BAYGA 1B / BERNE 1B / LASET 1B</b>							
RWY 24 (240°)							
	GS	120	150	180	210	240	270
3.6%	ft/MIN	500	600	700	800	900	1000
DESIGNATOR	ROUTING						ALTITUDES
	Runway 24						
<b>BAYGA 1B</b> 3.6% to BAYGA <b>122.400</b>	intercept R243 <b>KAR</b> - at D6 <b>KAR RT</b> follow D6 <b>KAR</b> arc - intercept R276 <b>KAR</b> to BAYGA						
<b>BERNE 1B</b> 3.6% to BERNE <b>122.400</b>	intercept R243 <b>KAR</b> to BERNE						
<b>LASET 1B</b> 3.6% to FL150 <b>122.400</b>	intercept R243 <b>KAR</b> - at D6 <b>KAR RT</b> direct <b>KAR</b> - R052 <b>KAR</b> to LASET						

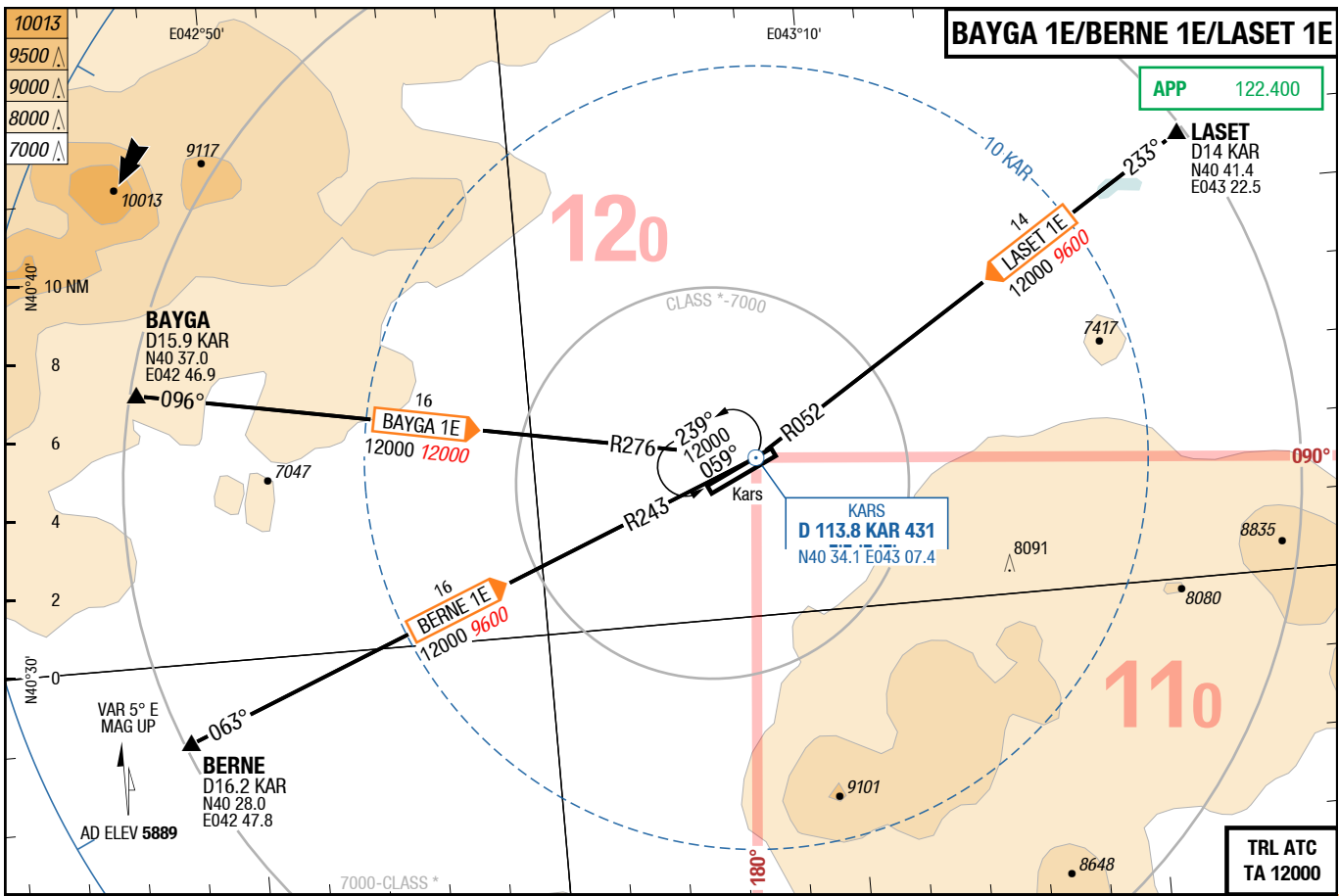
Changes: AD Name



THIS CHART IS A PART OF NAVIGRAPH CHARTS AND IS INTENDED FOR FLIGHT SIMULATION USE ONLY

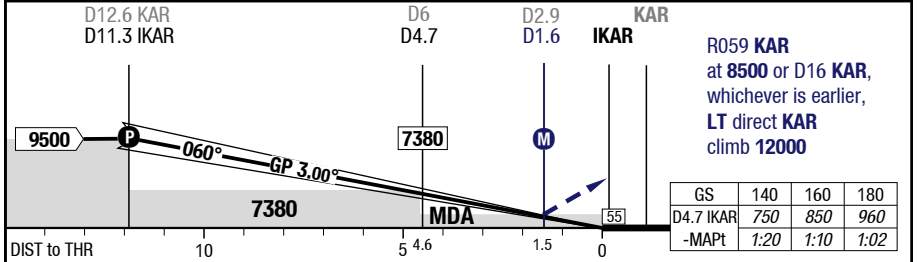
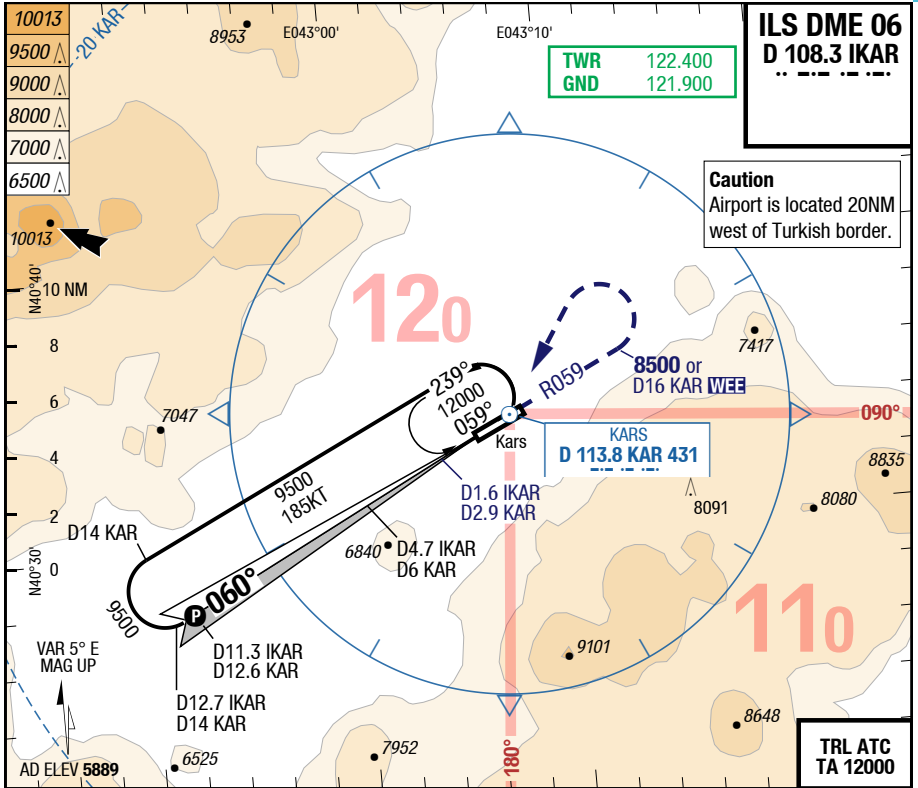
Changes: AD Name



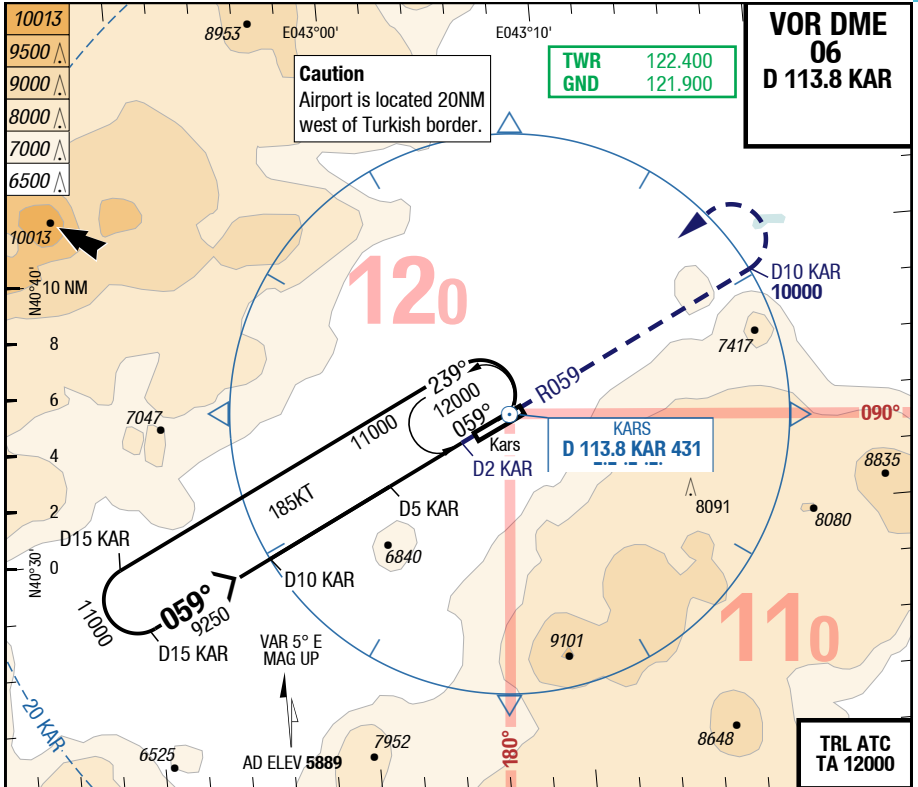


THIS CHART IS A PART OF NAVGRAPH CHARTS AND IS INTENDED FOR FLIGHT SIMULATION USE ONLY

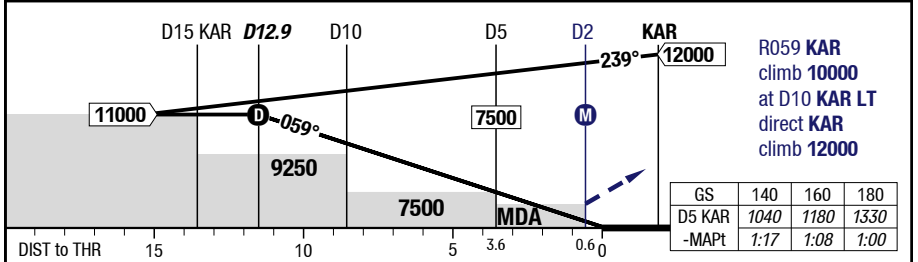
Changes: AD Name



1) With EVS 550m, wo EVS use STD



4.18°	12.9	11	9	7	4	3	
<b>D KAR</b> 059° RWY 060°	11000	10180	9290	8400	7070	6620	



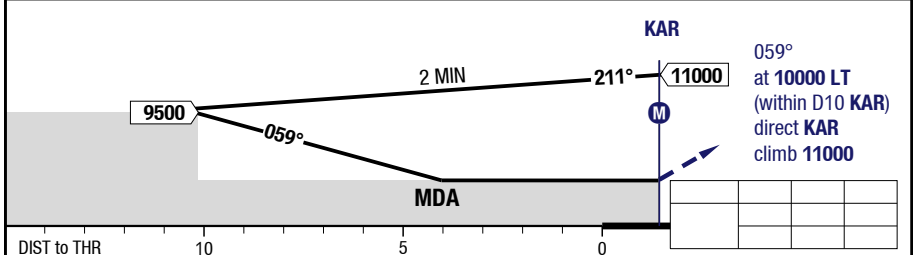
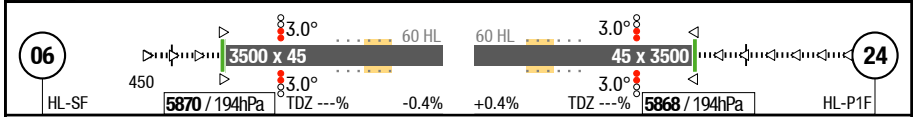
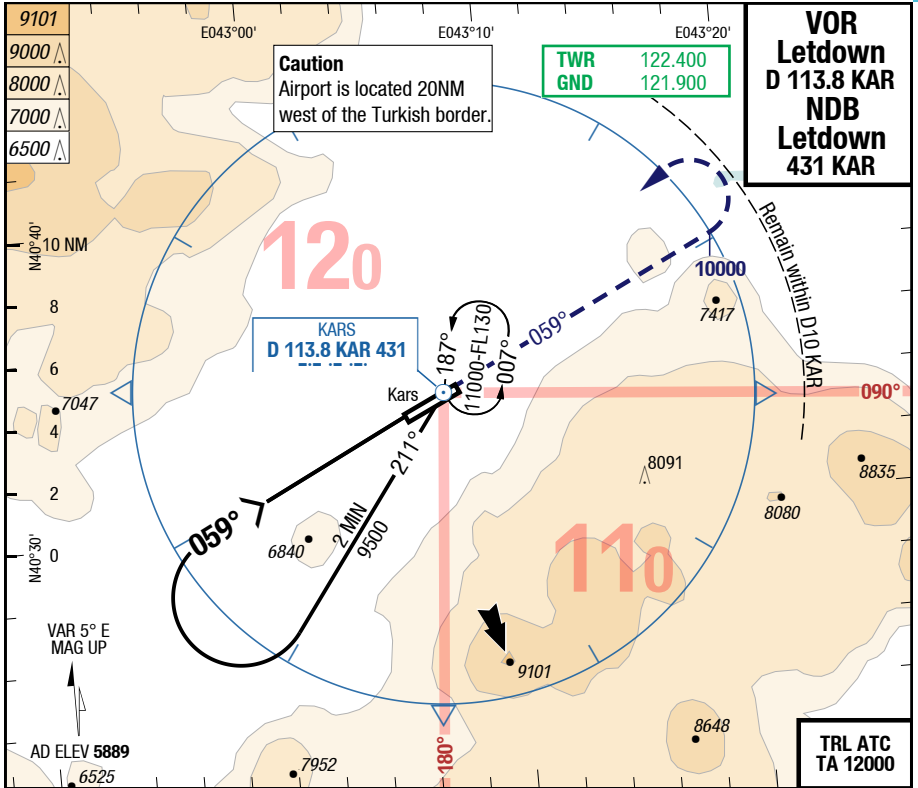
<b>06</b>	<b>VOR DME</b>	<b>VOR DME</b> APL U/S	<b>Circling</b>
C	ft - m/km ft 630 - 2.9V <b>6500</b>	630 - 3.3V <b>6500</b>	2620 - 5.0V <b>8500</b>
D	ft - m/km ft 630 - 2.9V <b>6500</b>	630 - 3.3V <b>6500</b>	2620 - 5.0V <b>8500</b>

Changes: AD Name

KSY-LTCF

7-30

VOR Letdown / NDB Letdown



06/24		Letdown VOR+NDB				Circling
C	ft - m/km ft	Straight-in Not authorized				2620 - 5.0V 8500
D	ft - m/km ft	Straight-in Not authorized				2620 - 5.0V 8500

Changes: AD Name