

GENERAL

Operational Hours

ATS Hours / AD ADMIN Hours: H24

Airport Information

RFF: CAT 7

PCN: RWY 10/28: 84/F/C/W/T

Operation

RWY Restriction

All turn back manoeuvres shall be conducted by using turnpad on RWY 10/28.

Warnings

ORI NDB/DME unusable: Between 120°-260° beyond 13NM below 18000ft.

Birds in vicinity of AD.

ARRIVAL

Warnings

ILS/DME RWY 28, at CAT II performance, unusable either side of CL beyond 18NM from LOC antennas an 10° left side of CL.

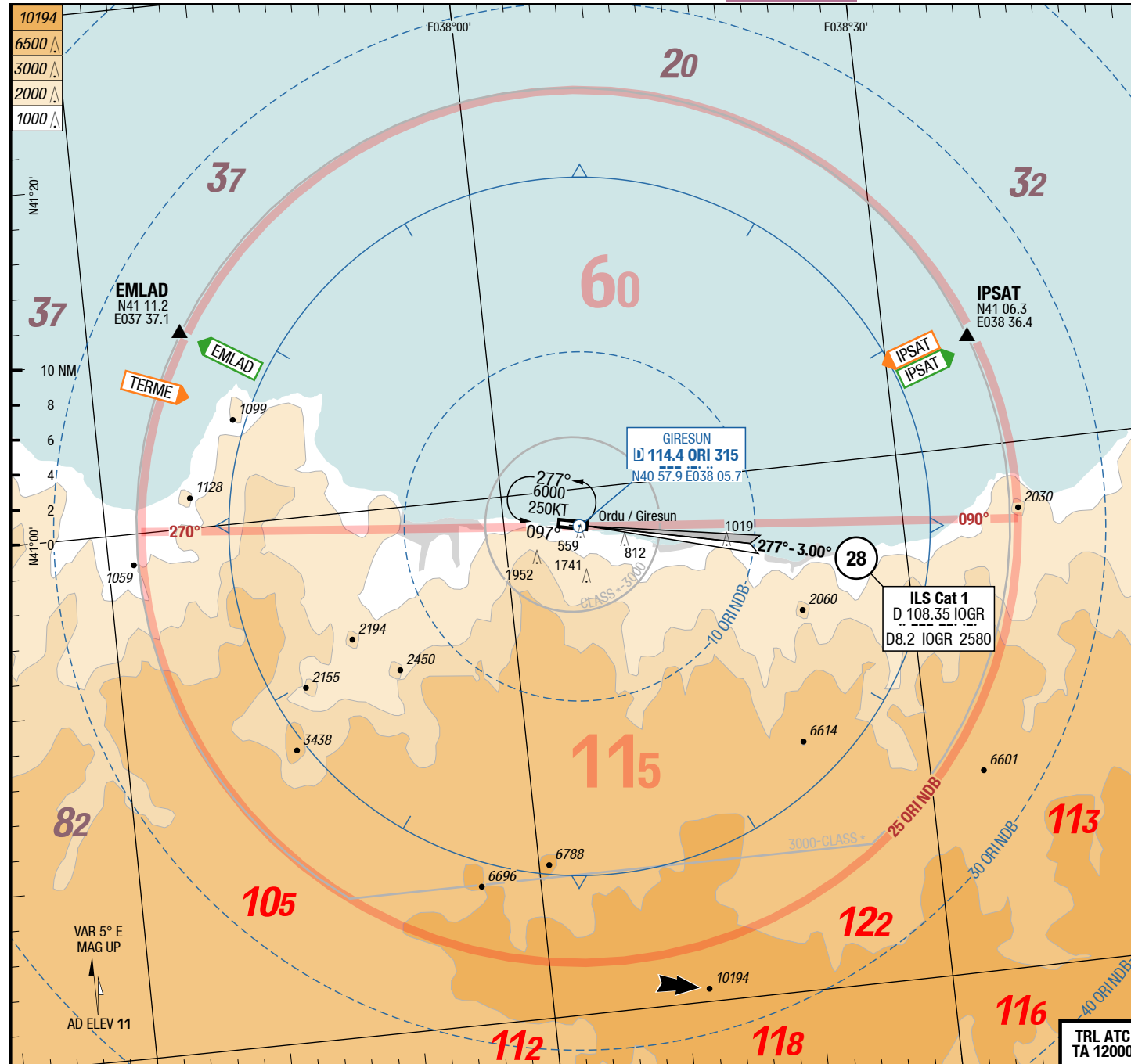
DEPARTURE

Take-off Minima

RWY		10/28	
All ACFT	ft - m/km	0 - 400v	-

ATC Slot, Clearance

Start-up: For start-up PROCs see CRAR Turkey.



APP 119.550
TWR 118.400
GND 121.575

Landing RWY system:

10 3000 x 45 3.0° 60 HL
 PAPI PSN unknown
 HL-P1F 11 / 0hPa TDZ ---% 0.0%

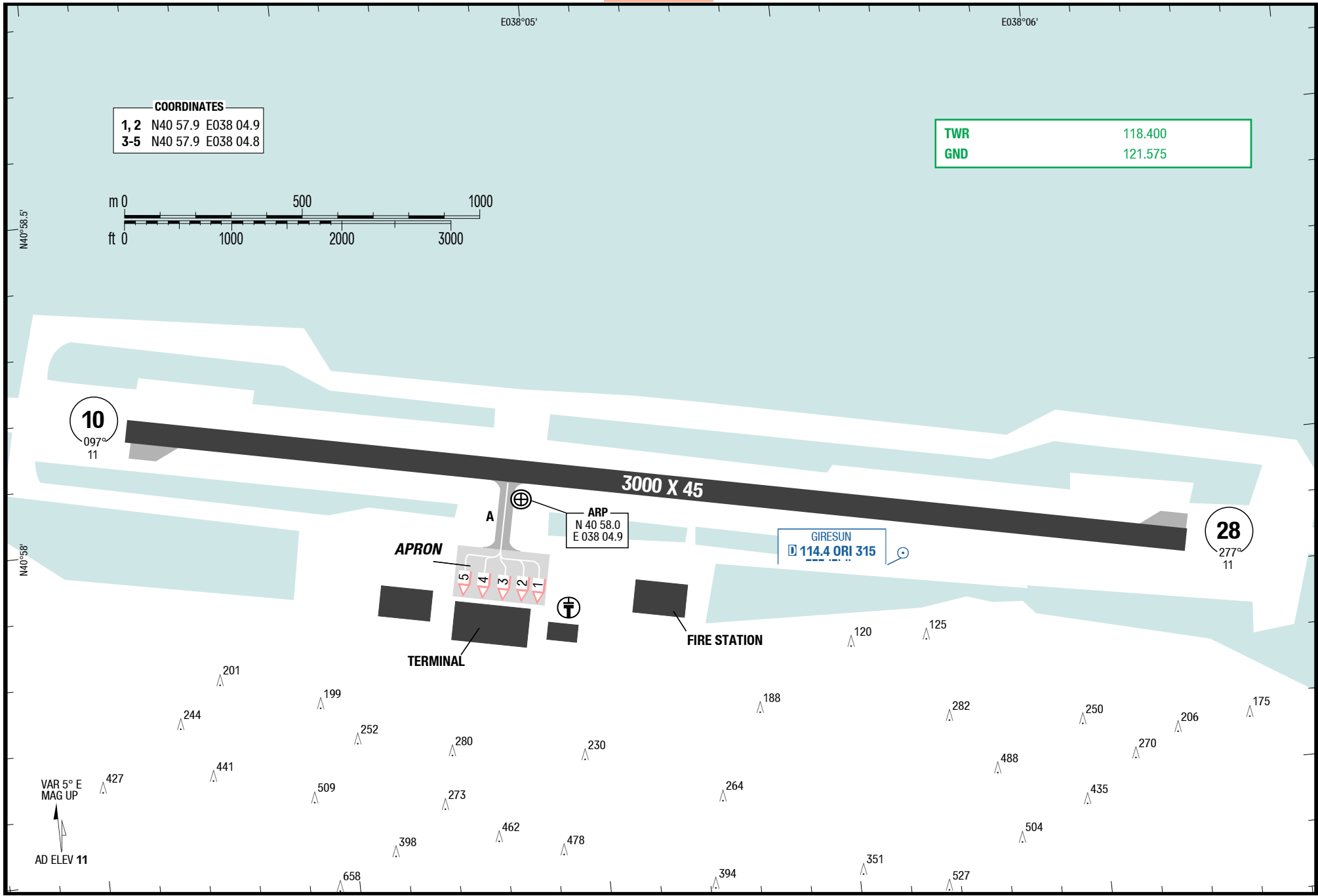
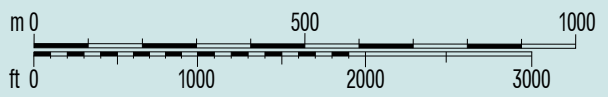
28 45 x 3000 3.0° 60 HL
 PAPI PSN unknown
 0.0% TDZ 11 (---%) / THR 11 (0hPa) HL-P1F

TRL ATC
 TA 12000

3-20

COORDINATES	
1, 2	N40 57.9 E038 04.9
3-5	N40 57.9 E038 04.8

TWR	118.400
GND	121.575



Changes: Nil

THIS CHART IS A PART OF NAVIGRAPH CHARTS AND IS INTENDED FOR FLIGHT SIMULATION USE ONLY

08-SEP-2016
OGU-LTCB

4-10

Turkey Ordu / Giresun

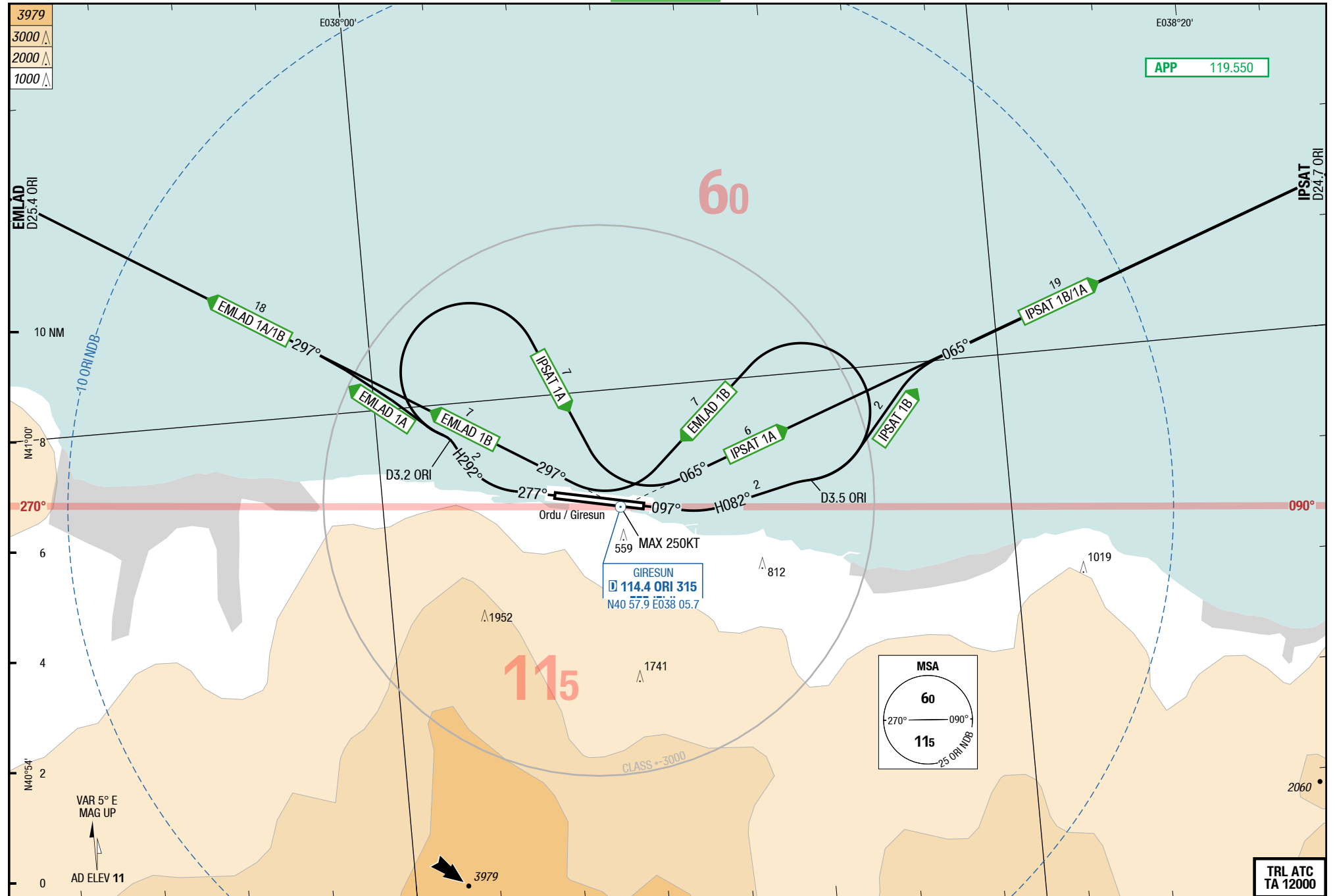
NIL
SIDs

SID

SID

Ordu / Giresun Turkey

NIL
SIDs



Changes: Track

THIS CHART IS A PART OF NAVIGRAPH CHARTS AND IS INTENDED FOR FLIGHT SIMULATION USE ONLY

TRL ATC
TA 12000

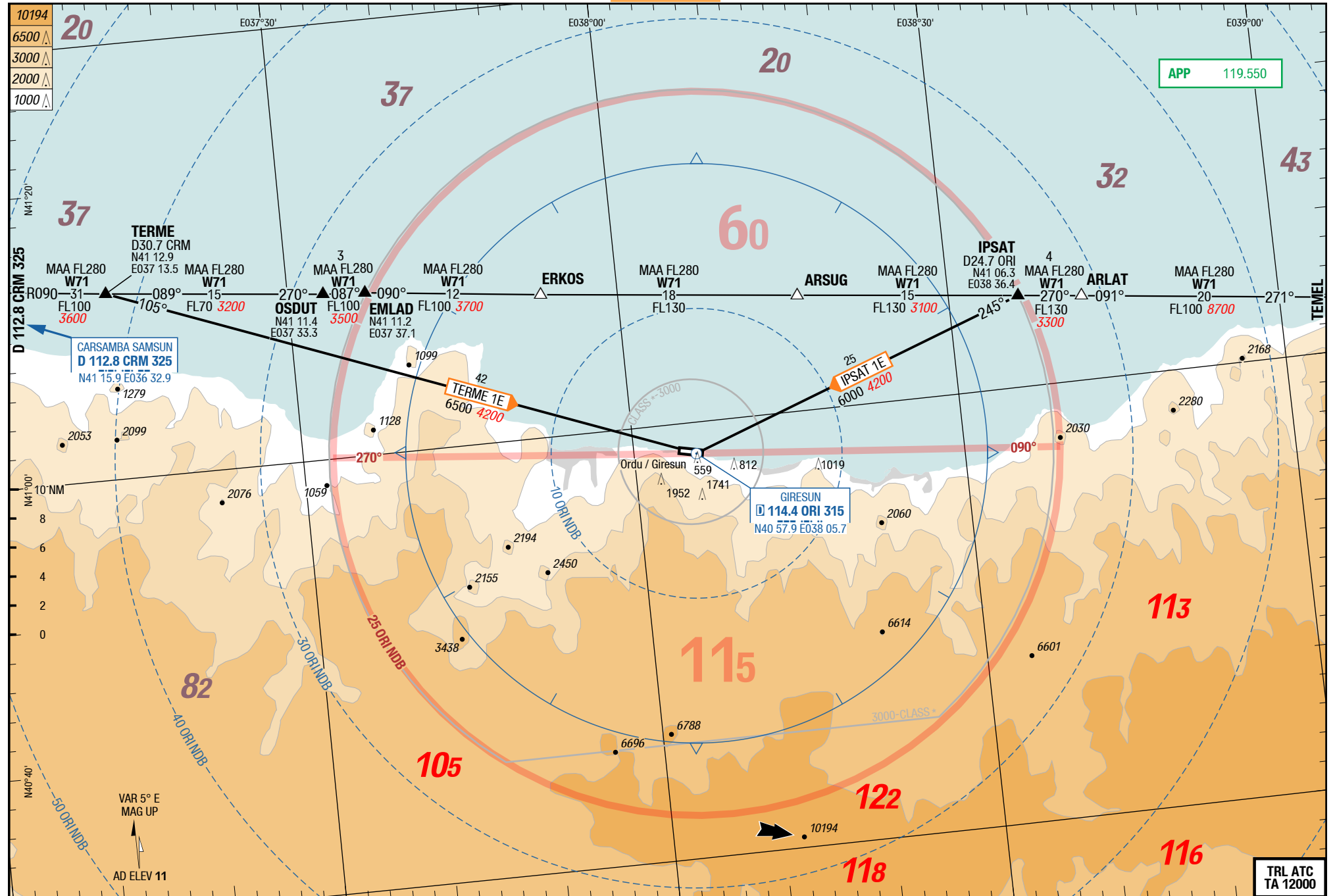
© Lido 2016

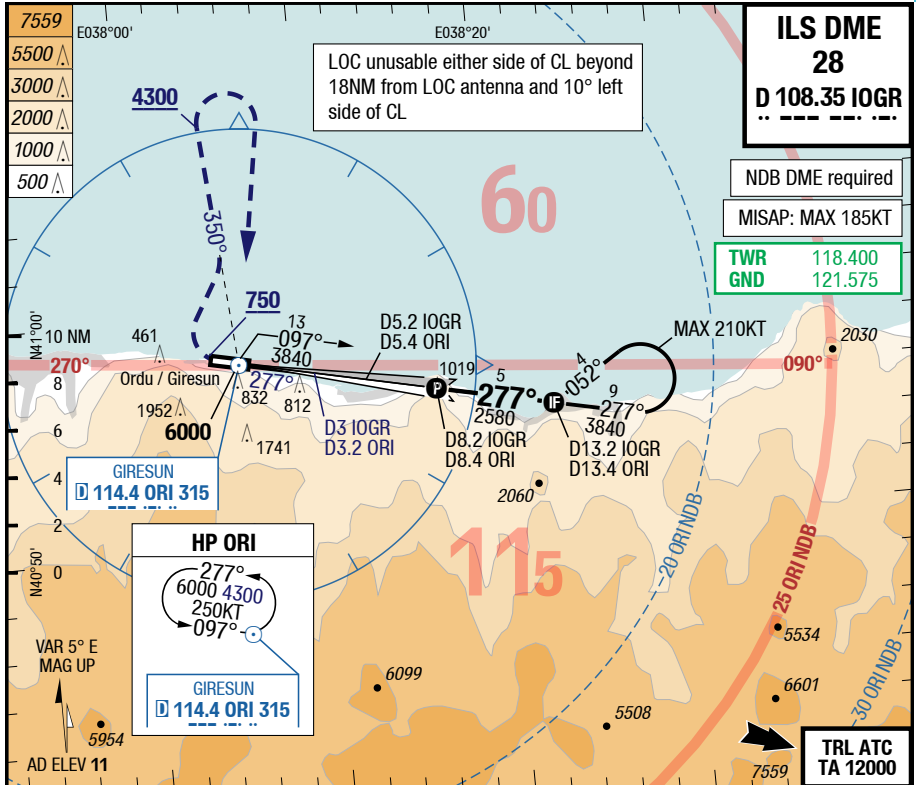
EMLAD 1B / IPSAT 1B / EMLAD 1A / IPSAT 1A

RWYs 10 (097°) / 28 (277°)

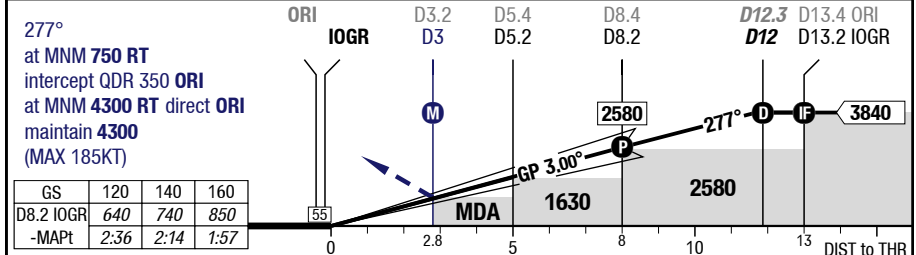
	GS	120	150	180	210	240	270
4.5%	ft/MIN	600	700	900	1000	1100	1300
6.8%	ft/MIN	900	1100	1300	1500	1700	1900

DESIGNATOR	ROUTING	ALTITUDES
	Runway 10	
EMLAD 1B 4.5% to 1000 119.550	LT HDG 082° - at D3.5 ORI LT to ORI NDB (MAX 250KT) - QDR 297° ORI to EMLAD	
IPSAT 1B 4.5% to 1000 119.550	LT HDG 082° - at D3.5 ORI LT intercept QDR 065° ORI to IPSAT	
	Runway 28	
EMLAD 1A 6.8% to 1500 119.550	RT HDG 292° - at D3.2 ORI intercept QDR 297° ORI to EMLAD	
IPSAT 1A 6.8% to 1500 119.550	RT HDG 292° - at D3.2 ORI RT to ORI NDB (MAX 250KT) - QDR 065° ORI to IPSAT	





60 HL	45 x 3000	28	4	5	6	8	10	12	LOC 3.00° D IOGR
PAPI PSN unknown	3.0°		1290	1600	1920	2560	3200	3840	
0.0%	TDZ 11 (---%) / THR 11 (OhPa)	HL-P1F							



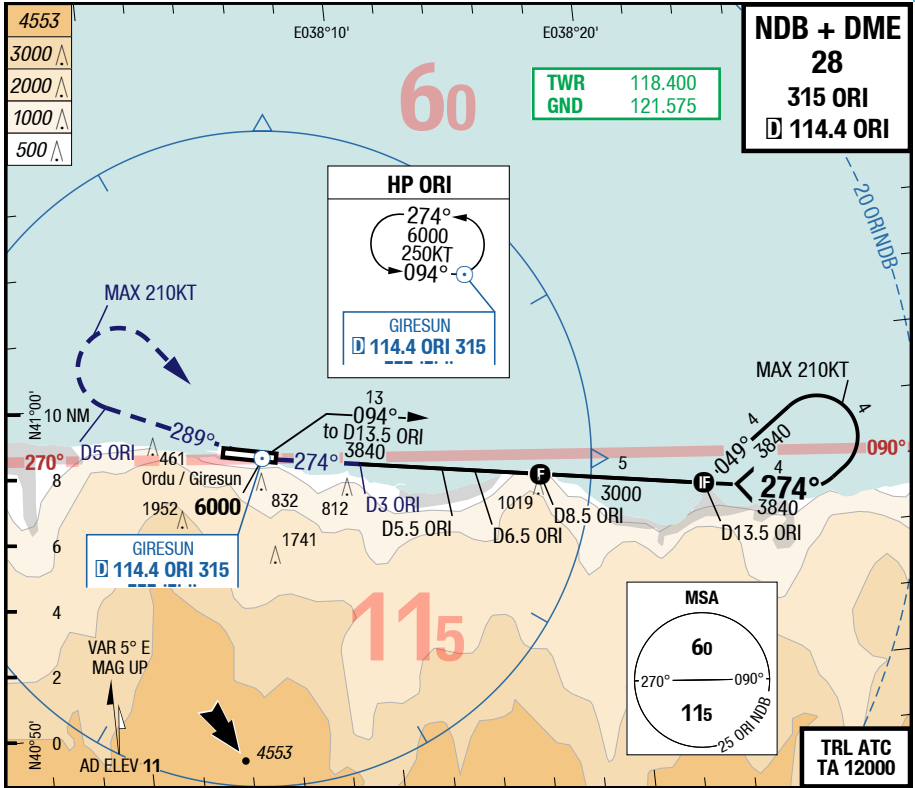
C	ft - m/km	680 - 2.4	960 - 2.4				Circling N of AD only
	ft	690	970			2090 - 2.4V 2100	
D	ft - m/km	680 - 2.4	960 - 2.4				2090 - 3.6V 2100
	ft	690	970				

1) With EVS 1.6km
2) Timing to determine MAPt NA

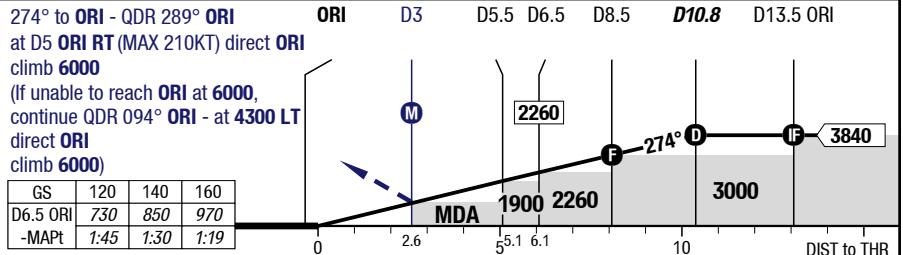
Changes: APL, ALT, MEA, Profile

7-20

NDB + DME 28



60 HL	45 x 3000	28	4	5	6	7	9	10.8	3.42°
PAPI PSN unknown 3.0°			1370	1740	2100	2460	3190	3840	D ORI 274°
0.0% TDZ 11 (---%) / THR 11 (OhPa)		HL-P1F							RWY 277°



28	NDB DME ORI	NDB DME ORI APL U/S			Circling N of AD only
C	ft - m/km ft	1010 - 4.2V 1020	1010 - 5.0V 1020		2090 - 5.0V 2100
D	ft - m/km ft	1010 - 4.2V 1020	1010 - 5.0V 1020		2090 - 5.0V 2100

Changes: APL