

GENERAL

Operational Hours

ATS Hours / AD ADMIN Hours: See NOTAM

Airport Information

RFF: CAT 7

PCN: RWY 09/27: 110/R/D/W/T

Customs: Not published

Operation

TWY Restriction

TWY A width 18m / 59ft.

TWY F width 15m / 49ft.

TWY A, F, J and Maintenance APN MAX weight 5.7t / 12500lbs.

ARRIVAL

Speed

MAX IAS 250KT within TMA at or below FL100 (refer to RFCs)

Arrival Procedure

Circling APCH south of AD prohibited due to MIL jet activities.

DEPARTURE

Take-off Minima

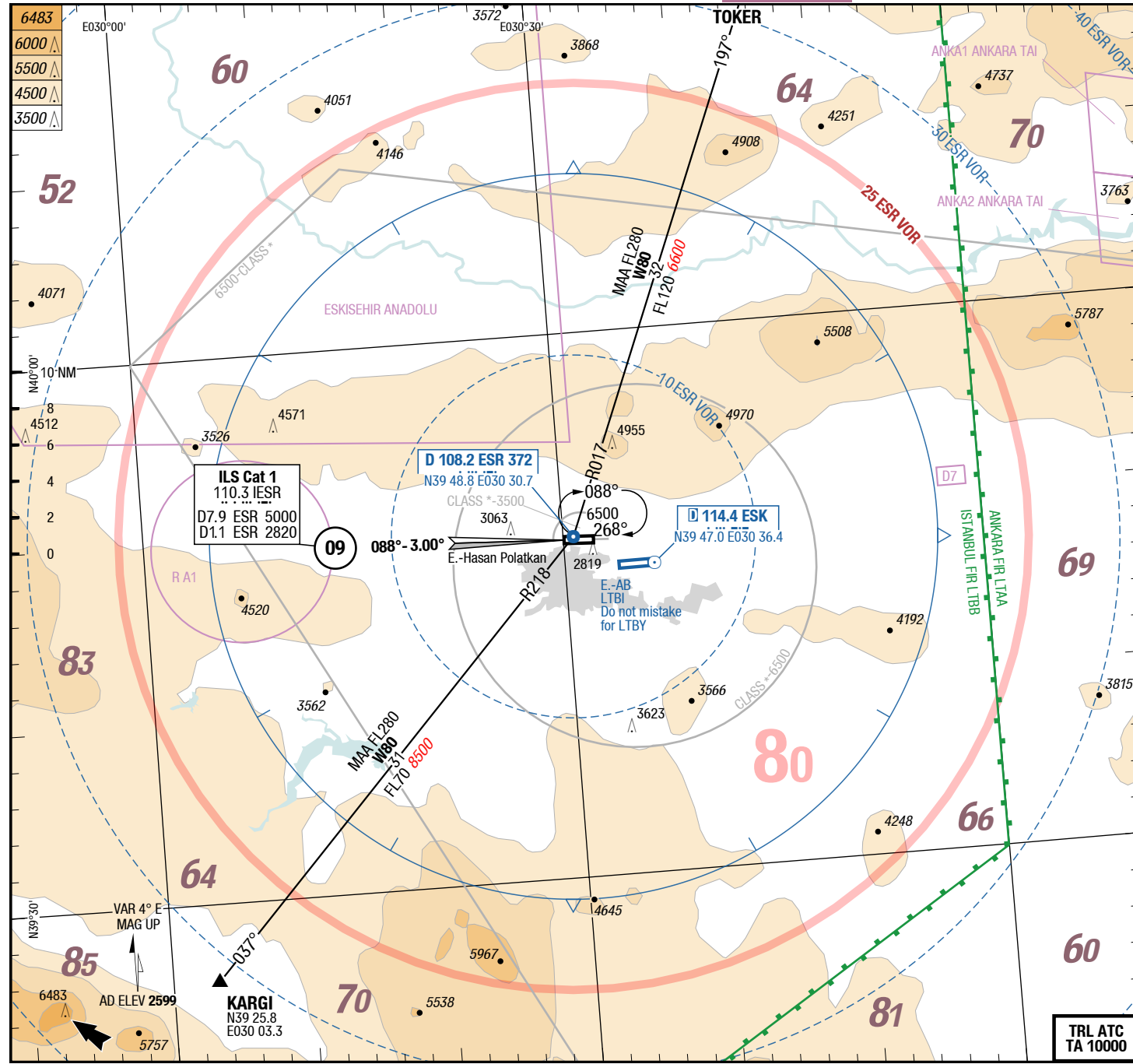
RWY		09/27	
All ACFT	ft - m/km	0 - 400v	-

Speed

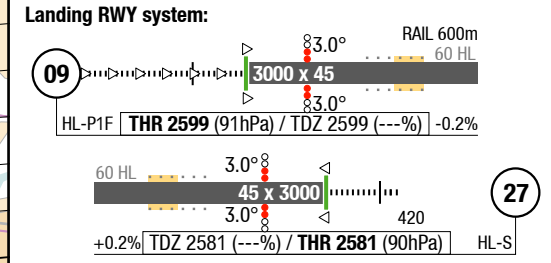
MAX IAS 250KT within TMA at or below FL100 (refer to RFCs)

ATC Clot, Clearance

Start-up: For start-up PROCs see CRAR Turkey.



APP 122.100
Anadolu TWR 123.750 HR by NOTAM
Anadolu GND 121.900 HR by NOTAM



Changes: SUAs, APCH boxes

3-20

AGC

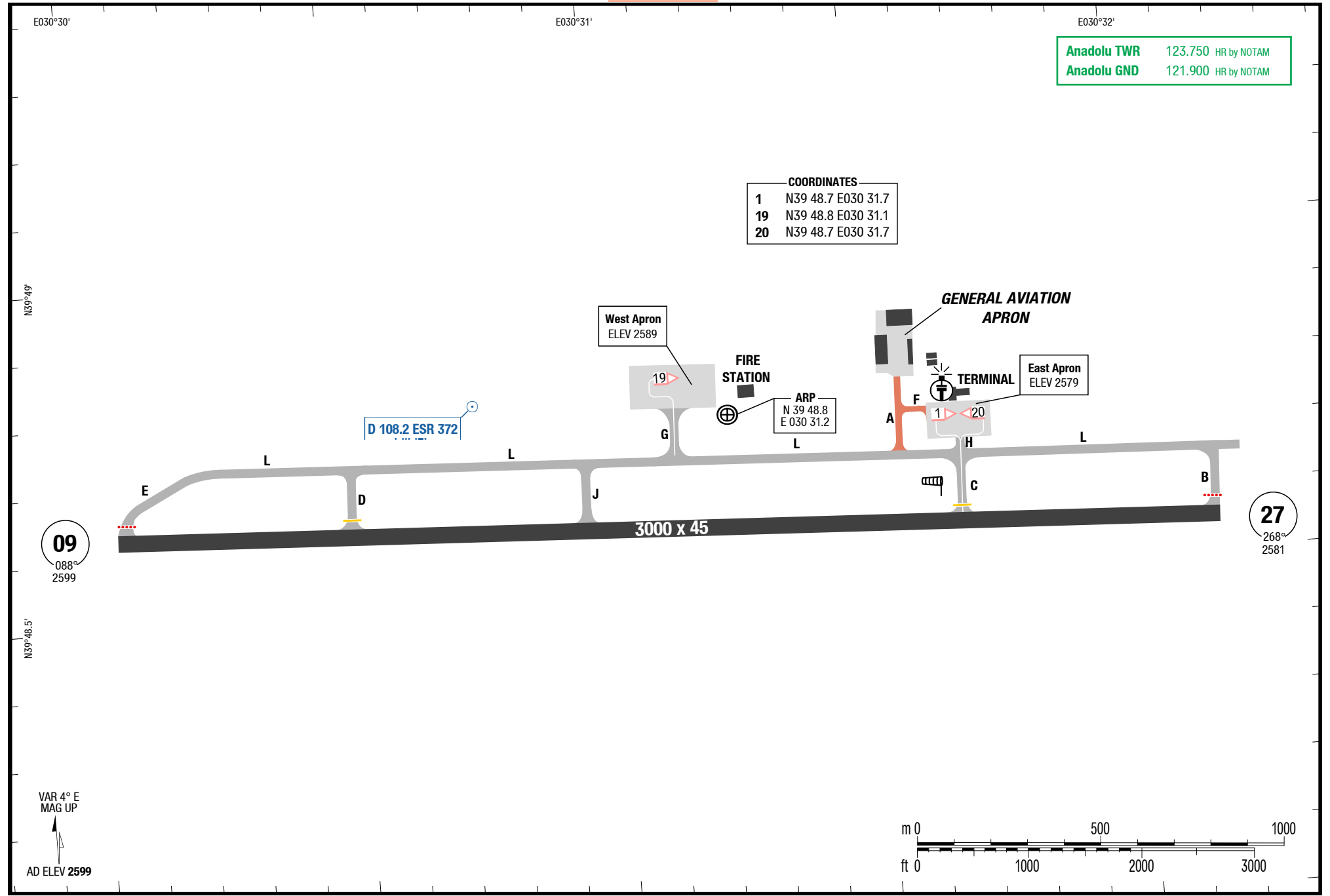
AGC

AGC

AGC

Anadolu TWR	123.750	HR by NOTAM
Anadolu GND	121.900	HR by NOTAM

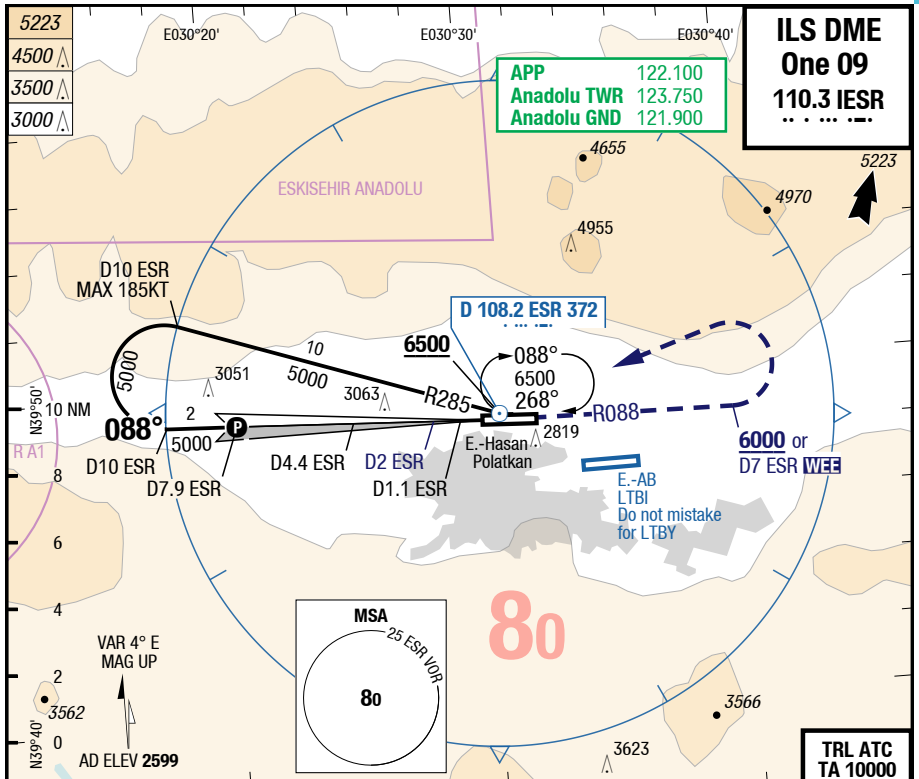
COORDINATES	
1	N39 48.7 E030 31.7
19	N39 48.8 E030 31.1
20	N39 48.7 E030 31.7



09
088°
2599

27
268°
2581

Changes: TWY J, APN, COORD, Parking Stands 20

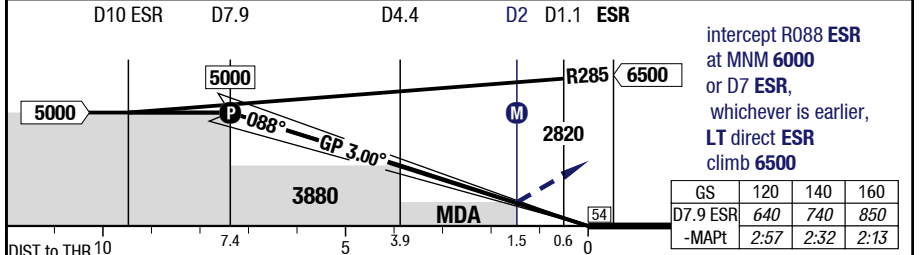


LOC 3.00° D ESR	7.9	6	5	4	3	
	5000	4400	4080	3760	3440	
	D10 ESR	D7.9	D4.4	D2	D1.1 ESR	

HL-P1F THR 2599 (91hPa) / TDZ 2599 (---%) | -0.2%

RAIL 600m
 60 HL

3000 x 45



09		Cat 1 DME ESR GA 8.0% 1)	Cat 1 DME ESR GA 5.0% 2)	LOC DME ESR GA 6.4%		Circling 3)
C	ft - m/km ft	210 - 550 2800	910 - 2.4 3500	510 - 1.6 3100		2210 - 2.4V 4800
D	ft - m/km ft	210 - 550 2800	910 - 2.4 3500	510 - 1.6 3100		2210 - 3.6V 4800

1) FD, AP or HGS required, else RVR 750m
 2) With EVS 1.6km, wo EVS use STD
 3) N of AD only

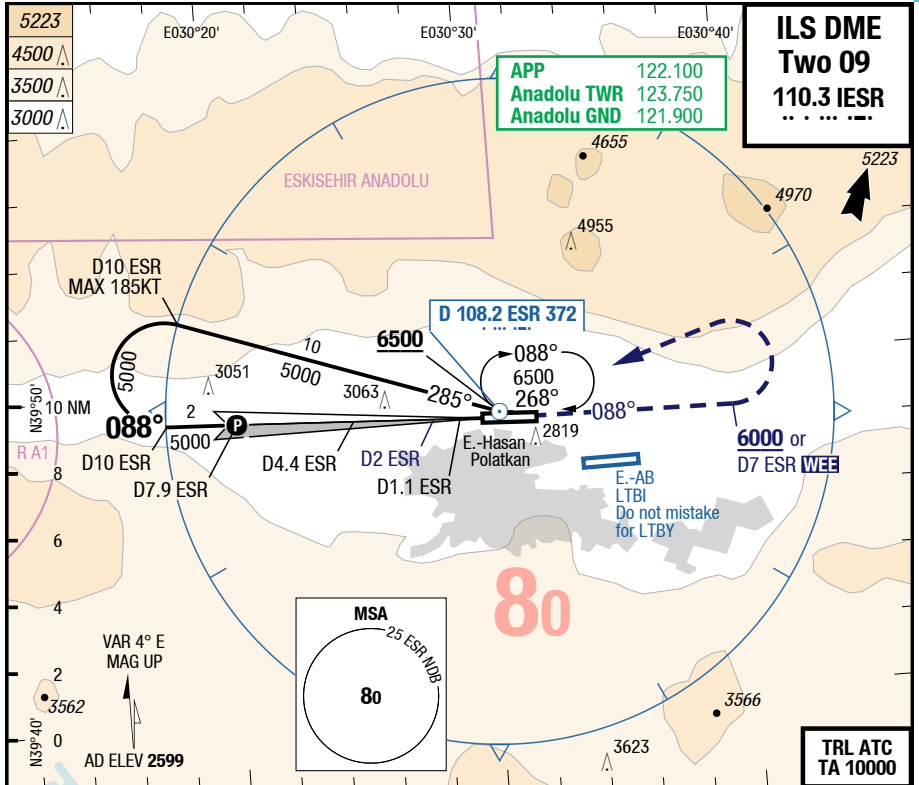
Changes: WPT, MISAP, SUAs, Profile

01-DEC-2016

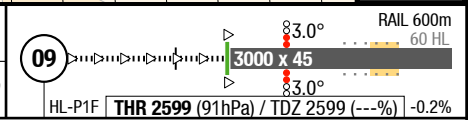
AOE-LTBY

7-20

ILS DME Two 09



LOC 3.00° D ESR	7.9	6	5	4	3
	5000	4400	4080	3760	3440



QDR 088 ESR NDB at MNM 6000 or D7 ESR, whichever is earlier, LT direct ESR NDB climb 6500

DIST to THR 10	7.4	5	3.9	1.5	0.6	0
Altitude	5000	3880	2820	6500	54	

09	C	ft - m/km ft	Cat 1 DME ESR GA 8.0% 1)	Cat 1 DME ESR GA 5.0% 2)	LOC DME ESR GA 6.4%	Circling 3)
			210 - 550 2800	910 - 2.4 3500	510 - 1.6 3100	
09	D	ft - m/km ft	Cat 1 DME ESR GA 8.0% 1)	Cat 1 DME ESR GA 5.0% 2)	LOC DME ESR GA 6.4%	Circling 3)
			210 - 550 2800	910 - 2.4 3500	510 - 1.6 3100	

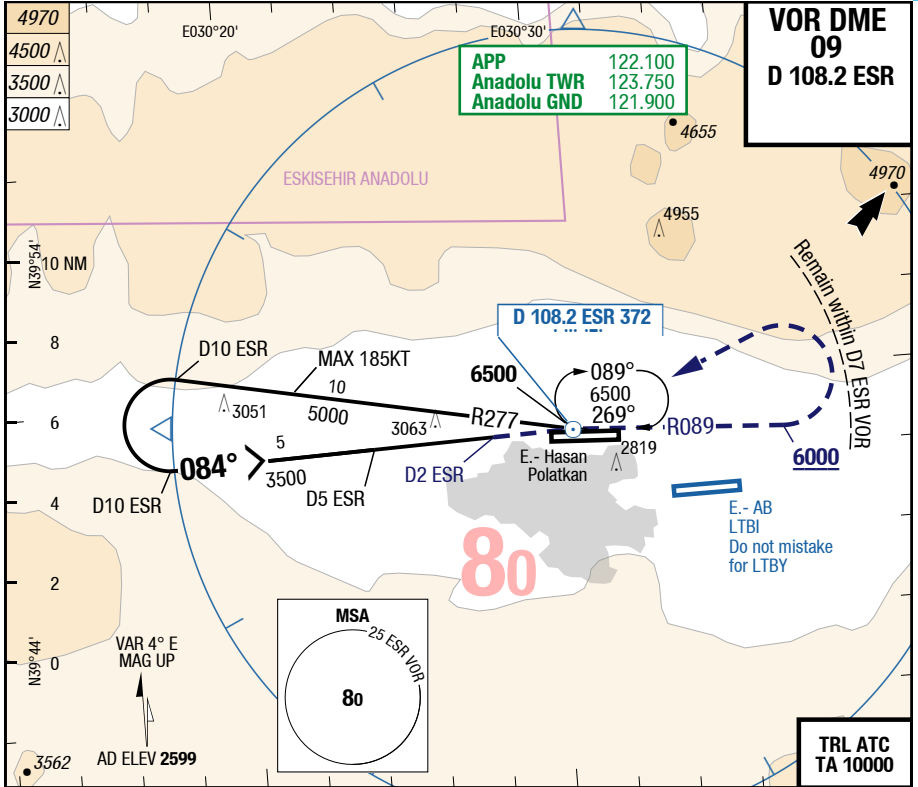
1) FD, AP or HGS required, else RVR 750m
 2) With EVS 1.6km, wo EVS use STD
 3) N of AD only

Changes: WPT, MISAP, SUAs, Profile

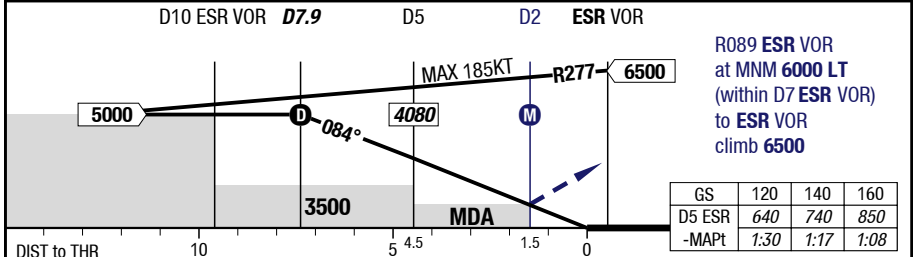
AOE-LTBY

7-30

VOR DME 09



3.00° D ESR RWY 088°		7.9	7	6	4	3	09 330° x 45 3.00° -0.2%	RAIL 600m 60 HL
	084°	5000	4710	4390	3760	3440		



09		VOR DME	VOR DME APL U/S	Circling N of AD only
C	ft - m/km ft	760 - 3.0V 3350	760 - 3.9V 3350	2210 - 5.0V 4800
D	ft - m/km ft	760 - 3.0V 3350	760 - 3.9V 3350	2210 - 5.0V 4800

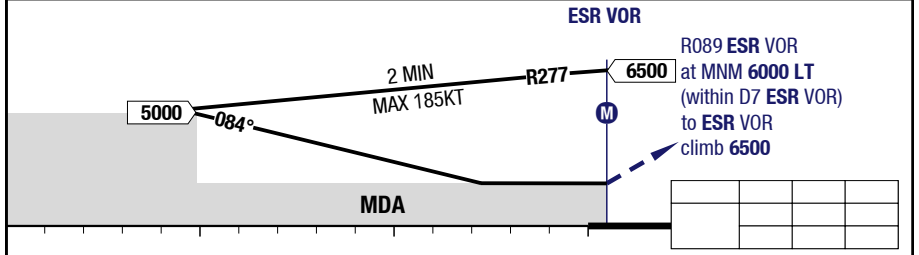
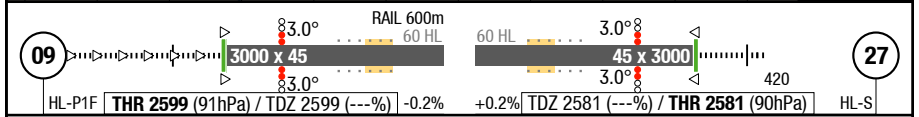
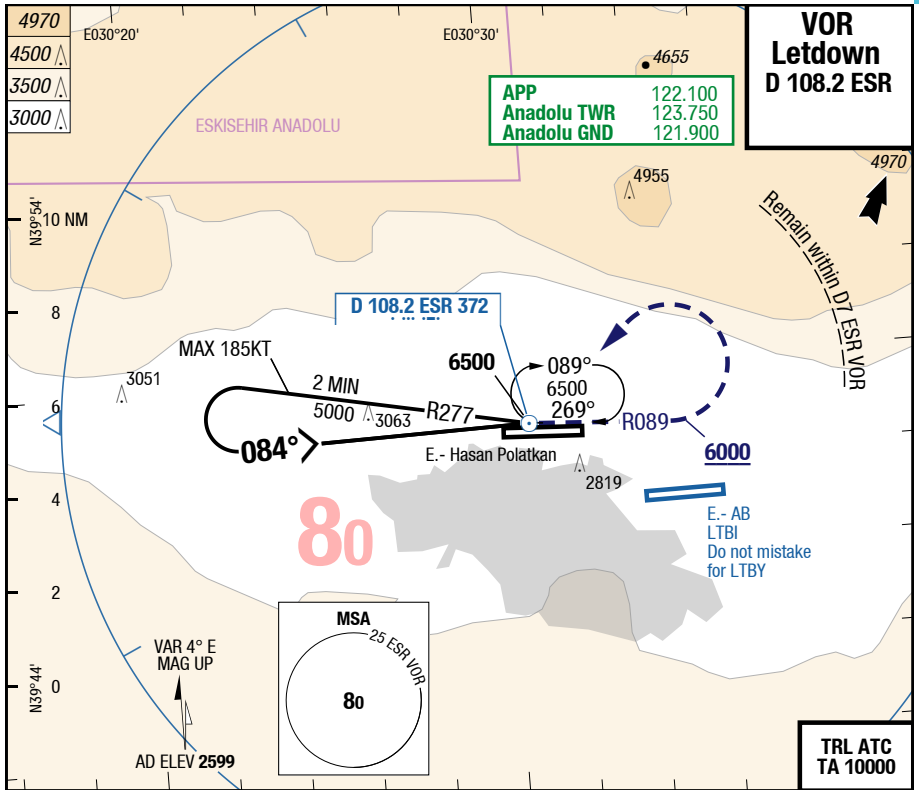
Changes: APL, SUAs, OBST, Editorial, AD Name

08-SEP-2016

AOE-LTBY

7-40

VOR Letdown



All RWYS		Letdown VOR					Circling ¹⁾
C	ft - m/km ft	Straight-in Not authorized					2210 - 5.0V 4800
D	ft - m/km ft	Straight-in Not authorized					2210 - 5.0V 4800

1) N of AD only

Changes: APL, SUAs, OBST, AD Name, Editorial

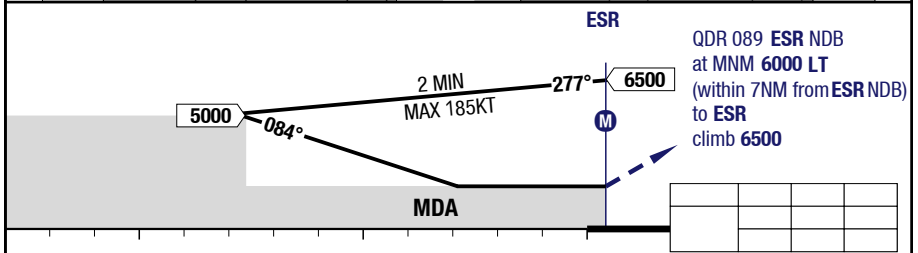
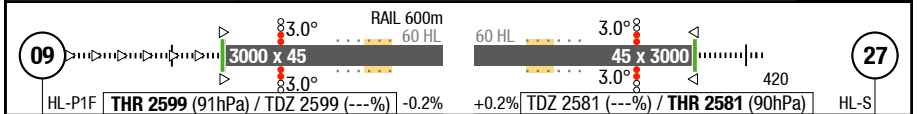
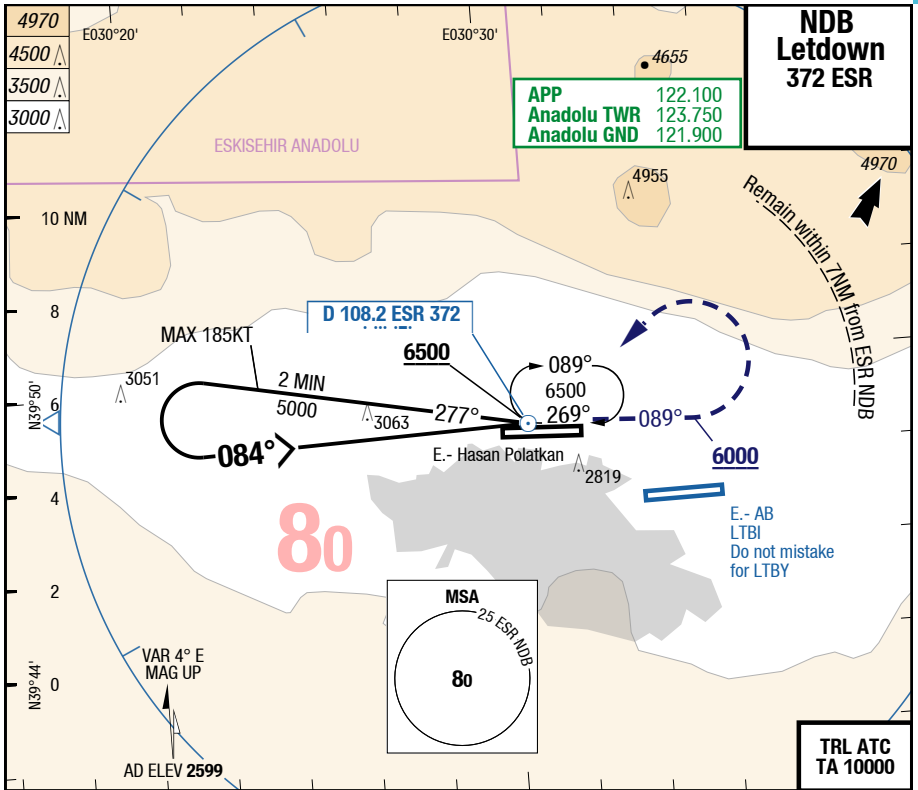
THIS CHART IS A PART OF NAVIGRAPH CHARTS AND IS INTENDED FOR FLIGHT SIMULATION USE ONLY

08-SEP-2016

AOE-LTBY

7-50

NDB Letdown



All RWYs		Letdown NDB				Circling ¹⁾
C	ft - m/km ft	Straight-in Not authorized				2210 - 5.0V 4800
D	ft - m/km ft	Straight-in Not authorized				2210 - 5.0V 4800

1) N of AD only

Changes: APL, SUAs, OBST, Editorial, AD Name

THIS CHART IS A PART OF NAVIGRAPH CHARTS AND IS INTENDED FOR FLIGHT SIMULATION USE ONLY