

21-MAY-2015

**TEQ-LTBU**

1-10

**A01****A01****GENERAL****ATS Hours**

H24

**Airport Information****RFF:** CAT 8**PCN:** RWY 05/23: 105/R/C/W/T**Operation****TWY Restriction**

TWY T, T1, T2, T3, T4, T5 width 20m / 66ft.

**Warnings**

Hook barrier barracks located at 55m / 180ft eastbound/westbound of RWY CL, DIST of 420m / 1378ft from THR RWY 05/23.

Net barrier posts located at 29m / 95ft eastbound/westbound of RWY CL, DIST of 45m / 148ft from THR RWY 23. Heights of posts: 0.4m / 1.3ft GND.

**ARRIVAL****Speed**

MAX IAS 250KT within TMA at or below FL100 (refer RFCs).

**DEPARTURE****Take-off Minima**

| RWY      |           | 05/23         |   |
|----------|-----------|---------------|---|
| All ACFT | ft - m/km | 0 - 400R/400V | - |

**ATC Slot, Clearance****Start-up:** For start-up PROCs see CRAR Turkey.**Speed**

MAX IAS 250KT within TMA at or below FL100 (refer RFCs).

**De-Icing**

AVBL H24

Changes: WRNG

2-10



**ATIS** 119.925

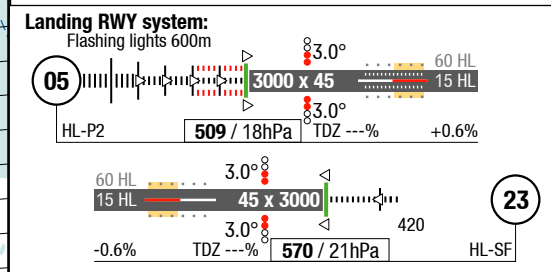
**Yesilkoy APP**

|         |       |
|---------|-------|
| 119.475 | West  |
| 120.500 | South |
| 120.700 | East  |
| 121.100 | North |
| 127.100 | West  |
| 126.425 | East  |
| 127.825 | North |

**Corlu TWR** 120.375

**Corlu GND** 122.100 0600-1500

121.900



3-20

AGC

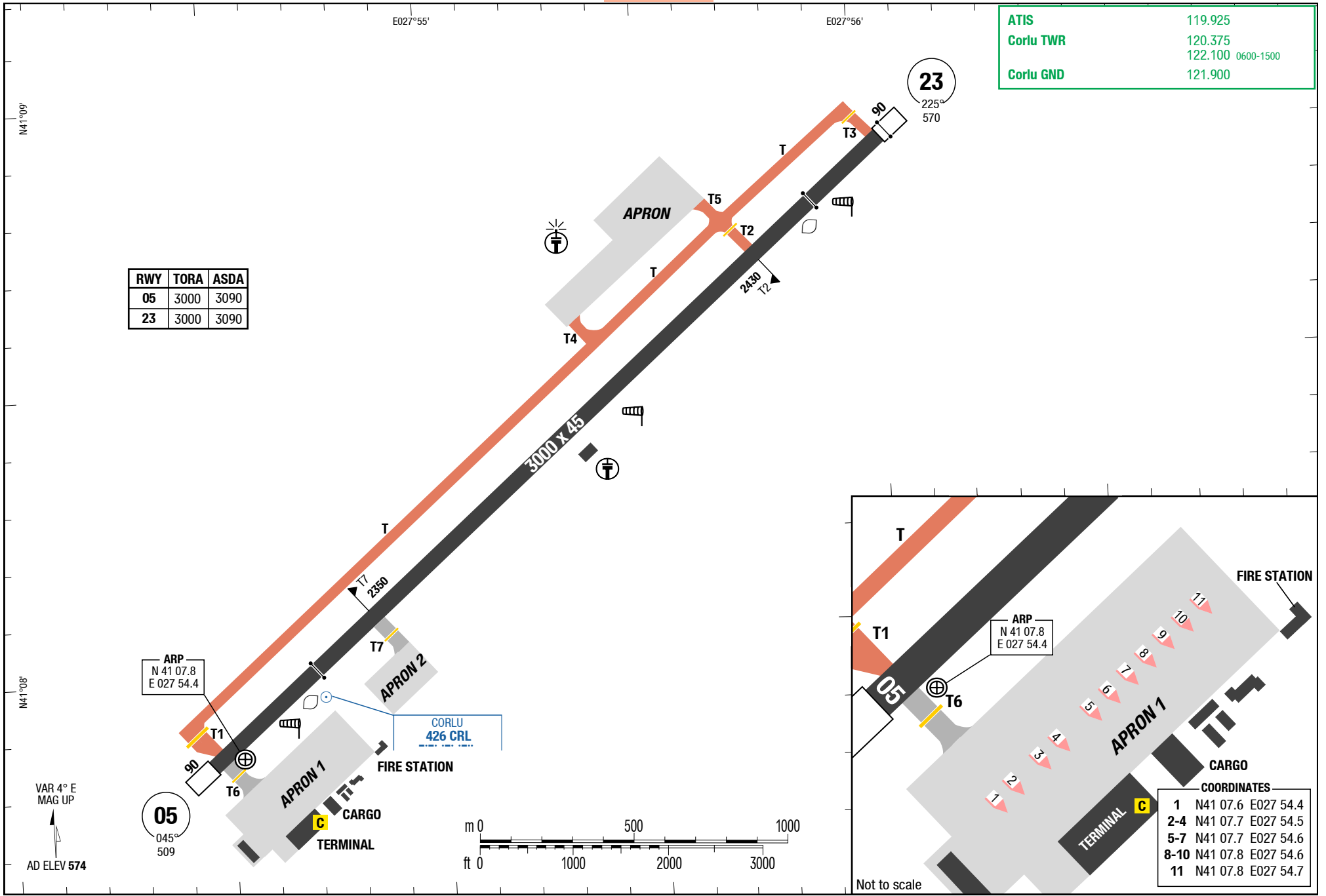
AGC

AGC

AGC

|           |                   |
|-----------|-------------------|
| ATIS      | 119.925           |
| Corlu TWR | 120.375           |
|           | 122.100 0600-1500 |
| Corlu GND | 121.900           |

| RWY | TORA | ASDA |
|-----|------|------|
| 05  | 3000 | 3090 |
| 23  | 3000 | 3090 |



COORDINATES

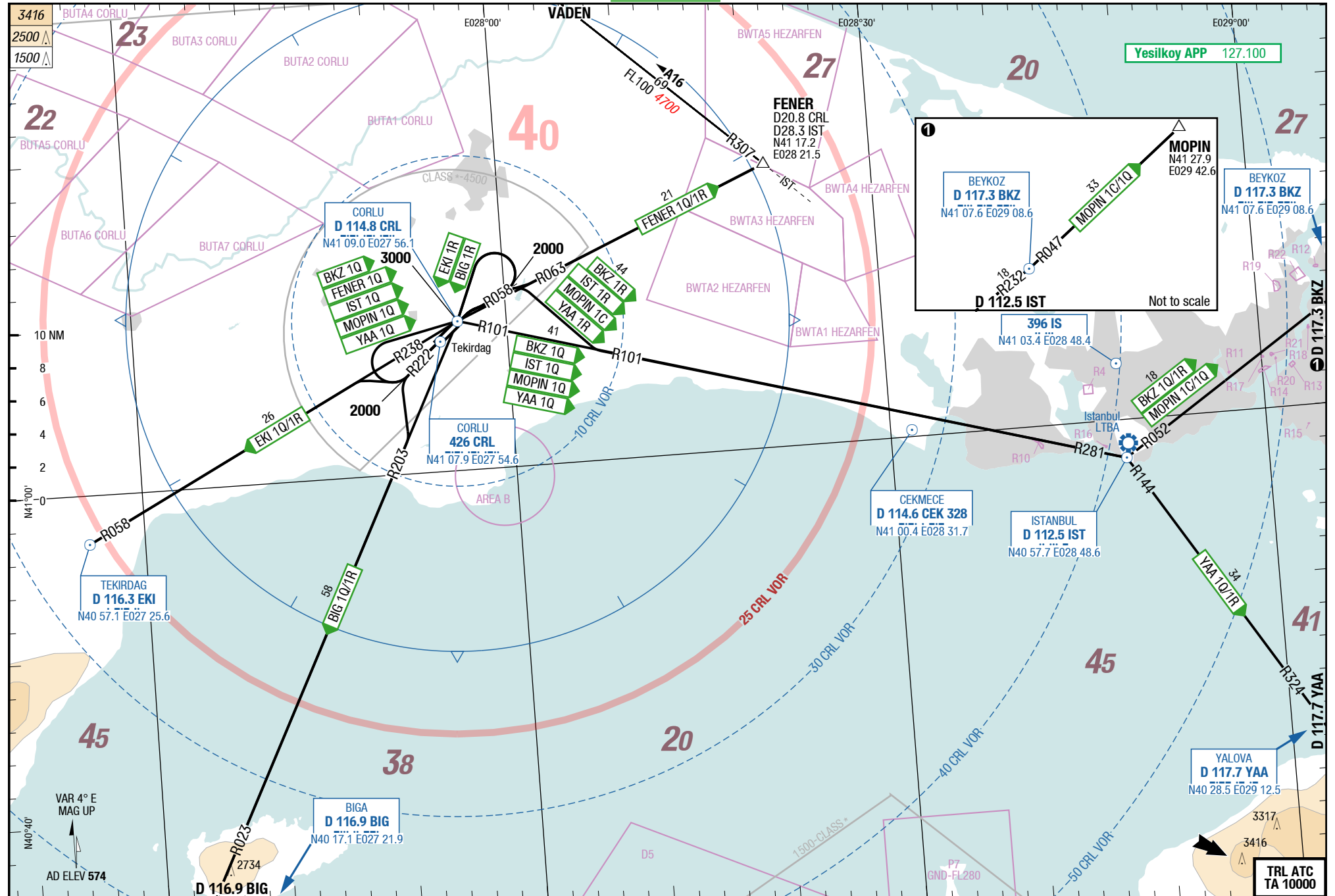
|      |          |           |
|------|----------|-----------|
| 1    | N41 07.6 | E027 54.4 |
| 2-4  | N41 07.7 | E027 54.5 |
| 5-7  | N41 07.7 | E027 54.6 |
| 8-10 | N41 07.8 | E027 54.6 |
| 11   | N41 07.8 | E027 54.7 |

4-10

NIL  
SIDs

SID SID

NIL  
SIDs



21-APR-2016

**TEQ-LTBU**

5-10

**SIDs****SIDPT****BEYKOZ 1R / BIGA 1R / FENER 1R / ISTANBUL 1R / MOPIN 1C / TEKIRDAG 1R / YALOVA 1R / BEYKOZ 1Q / BIGA 1Q / FENER 1Q**

RWYs 05 (045°) / 23 (225°)

|      |        |     |     |      |      |      |      |
|------|--------|-----|-----|------|------|------|------|
|      | GS     | 120 | 150 | 180  | 210  | 240  | 270  |
| 5.0% | ft/MIN | 700 | 800 | 1000 | 1100 | 1300 | 1400 |

| DESIGNATOR  | ROUTING   | ALTITUDES          |
|---|---|--------------------|
|   | <b>Runway 05</b>  |                    |
| <b>BEYKOZ 1R</b><br><b>BKZ 1R</b><br>5.0% to D2 CRL<br><b>127.100</b>   | R058 <b>CRL</b> - at <b>2000 RT</b> intercept R101 <b>CRL</b> to <b>IST</b> - R052 <b>IST</b> to <b>BKZ</b> - join appropriate AWY G123, W702 or A4           |                    |
| <b>BIGA 1R</b><br><b>BIG 1R</b><br>5.0% to D2 CRL<br><b>127.100</b>     | R058 <b>CRL</b> - at <b>2000 LT</b> direct <b>CRL</b> - R203 <b>CRL</b> to <b>BIG</b>   | <b>CRL at 3000</b> |
| <b>FENER 1R</b><br>5.0% to D2 CRL<br><b>127.100</b>                     | R058 <b>CRL</b> - at <b>2000 RT</b> intercept R063 <b>CRL</b> - at FENER <b>LT</b> intercept R307 <b>IST</b> to join AWY A16                                  |                    |
| <b>ISTANBUL 1R</b><br><b>IST 1R</b><br>5.0% to D2 CRL<br><b>127.100</b> | R058 <b>CRL</b> - at <b>2000 RT</b> intercept R101 <b>CRL</b> to <b>IST</b>   |                    |
| <b>MOPIN 1C</b><br>5.0% to D2 CRL<br><b>127.100</b>                     | R058 <b>CRL</b> - at <b>2000 RT</b> intercept R101 <b>CRL</b> to <b>IST</b> - R052 <b>IST</b> to <b>BKZ</b> - R047 <b>BKZ</b> to MOPIN                        |                    |
| <b>TEKIRDAG 1R</b><br><b>EKI 1R</b><br>5.0% to D2 CRL<br><b>127.100</b> | R058 <b>CRL</b> - at <b>2000 LT</b> direct <b>CRL</b> - R238 <b>CRL</b> to <b>EKI</b>   | <b>CRL at 3000</b> |
| <b>YALOVA 1R</b><br><b>YAA 1R</b><br>5.0% to D2 CRL<br><b>127.100</b>   | R058 <b>CRL</b> - at <b>2000 RT</b> intercept R101 <b>CRL</b> to <b>IST</b> - R144 <b>IST</b> to <b>YAA</b> - join appropriate AWY G8 or A16                  |                    |
|   | <b>Runway 23</b>  |                    |
| <b>BEYKOZ 1Q</b><br><b>BKZ 1Q</b><br><b>127.100</b>                     | R222 <b>CRL</b> - at <b>2000 RT</b> direct <b>CRL</b> - R101 <b>CRL</b> to <b>IST</b> - R052 <b>IST</b> to <b>BKZ</b> - join appropriate AWY G123, W702 or A4 | <b>CRL at 3000</b> |
| <b>BIGA 1Q</b><br><b>BIG 1Q</b><br><b>127.100</b>                       | R222 <b>CRL</b> - at <b>2000 LT</b> intercept R203 <b>CRL</b> to <b>BIG</b>   |                    |
| <b>FENER 1Q</b><br><b>127.100</b>                                       | R222 <b>CRL</b> - at <b>2000 RT</b> direct <b>CRL</b> - R063 <b>CRL</b> - at FENER <b>LT</b> intercept R307 <b>IST</b> to join AWY A16                        | <b>CRL at 3000</b> |

Changes: Track

**THIS CHART IS A PART OF NAVIGRAPH CHARTS AND IS INTENDED FOR FLIGHT SIMULATION USE ONLY**

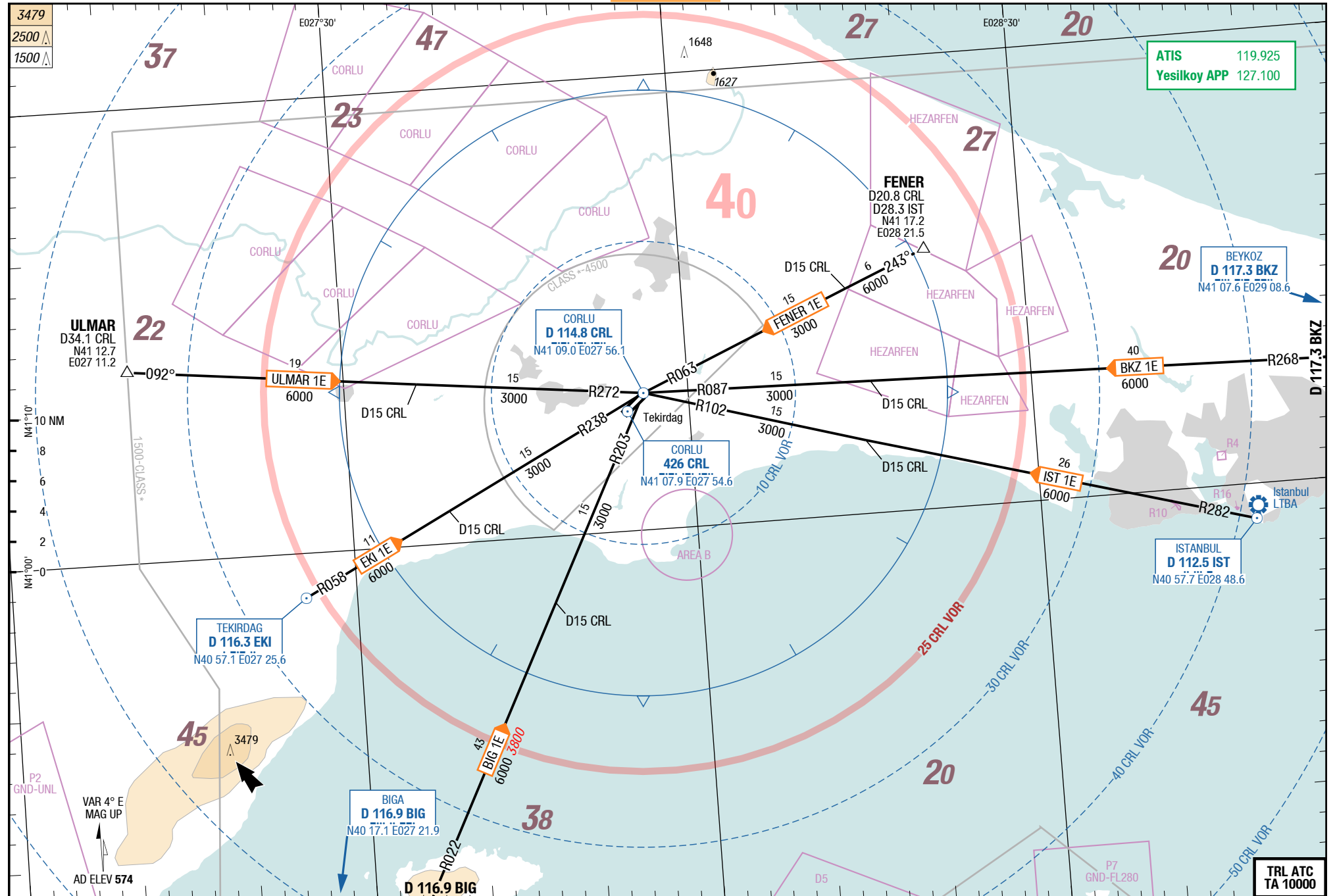
**ISTANBUL 1Q / MOPIN 1Q / TEKIRDAG 1Q / YALOVA 1Q**

RWY 23 (225°)

| DESIGNATOR  | ROUTING   | ALTITUDES                 |
|---|---|---------------------------|
|   | <b>Runway 23</b>  |                           |
| <b>ISTANBUL 1Q</b><br><b>IST 1Q</b><br><b>127.100</b> | R222 <b>CRL</b> - at <b>2000 RT</b> direct <b>CRL</b> - R101 <b>CRL</b> to <b>IST</b>   | <b>CRL</b> at <b>3000</b> |
| <b>MOPIN 1Q</b><br><b>127.100</b>                     | R222 <b>CRL</b> - at <b>2000 RT</b> direct <b>CRL</b> - R101 <b>CRL</b> to <b>IST</b> - R052 <b>IST</b> to <b>BKZ</b> - R047 <b>BKZ</b> to <b>MOPIN</b> | <b>CRL</b> at <b>3000</b> |
| <b>TEKIRDAG 1Q</b><br><b>EKI 1Q</b><br><b>127.100</b> | R222 <b>CRL</b> - at <b>2000 RT</b> intercept R238 <b>CRL</b> to <b>EKI</b>   |                           |
| <b>YALOVA 1Q</b><br><b>YAA 1Q</b><br><b>127.100</b>   | R222 <b>CRL</b> - at <b>2000 RT</b> direct <b>CRL</b> - R101 <b>CRL</b> to <b>IST</b> - R144 <b>IST</b> to <b>YAA</b> - join appropriate AWY G8 or A16  | <b>CRL</b> at <b>3000</b> |

Changes: Track

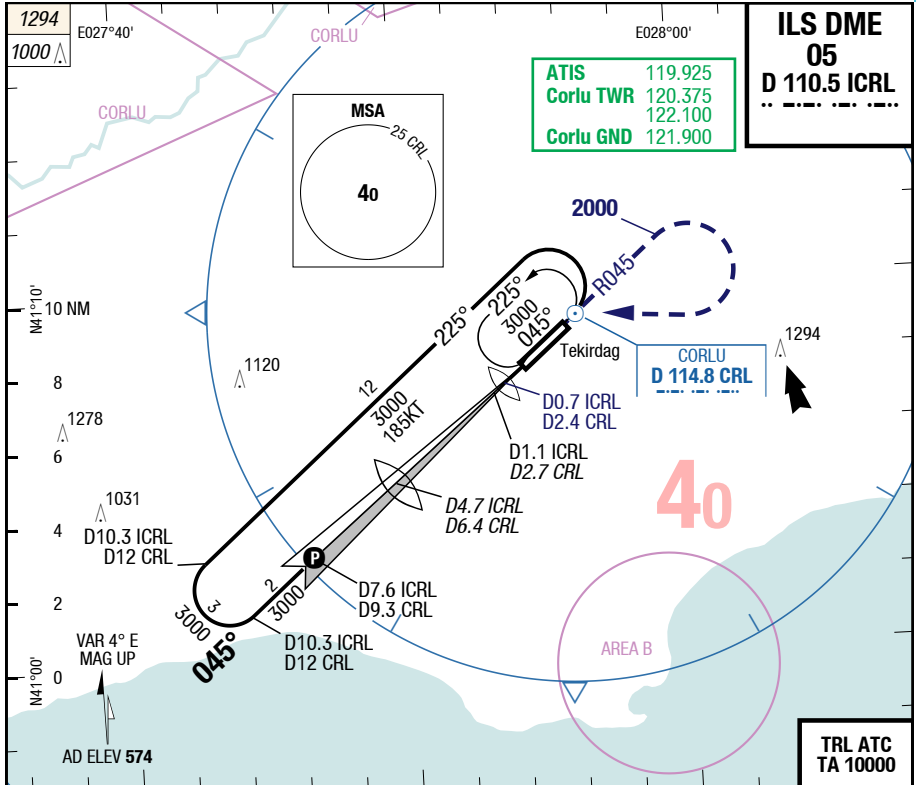
6-10



TEQ-LTBU

7-10

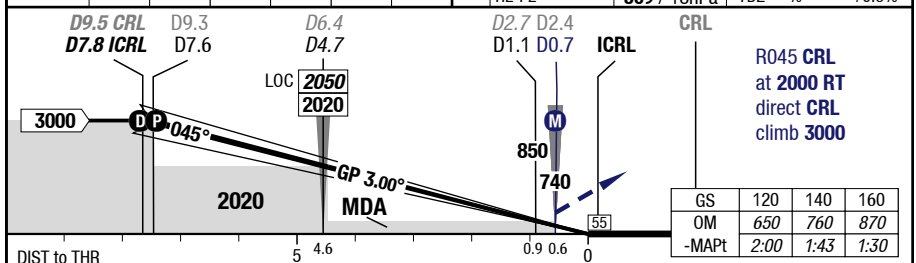
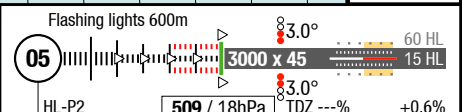
ILS DME 05



|           |         |
|-----------|---------|
| ATIS      | 119.925 |
| Corlu TWR | 120.375 |
| Corlu GND | 122.100 |
|           | 121.900 |

|                     |
|---------------------|
| <b>ILS DME</b>      |
| <b>05</b>           |
| <b>D 110.5 ICRL</b> |
| .....               |

|           |      |      |      |      |      |      |
|-----------|------|------|------|------|------|------|
| LOC 3.08° | 7.8  | 6    | 5    | 4    | 3    | 2    |
| D ICRL    | 3000 | 2470 | 2140 | 1820 | 1490 | 1160 |



|           |                 |                         |                         |  |                            |
|-----------|-----------------|-------------------------|-------------------------|--|----------------------------|
| <b>05</b> |                 | <b>Cat 1</b>            | <b>LOC DME</b>          |  | <b>Circling</b>            |
| C         | ft - m/km<br>ft | 200 - 550<br><b>720</b> | 340 - 800<br><b>850</b> |  | 1130 - 2.4V<br><b>1700</b> |
| D         | ft - m/km<br>ft | 200 - 550<br><b>720</b> | 340 - 800<br><b>850</b> |  | 1130 - 3.6V<br><b>1700</b> |

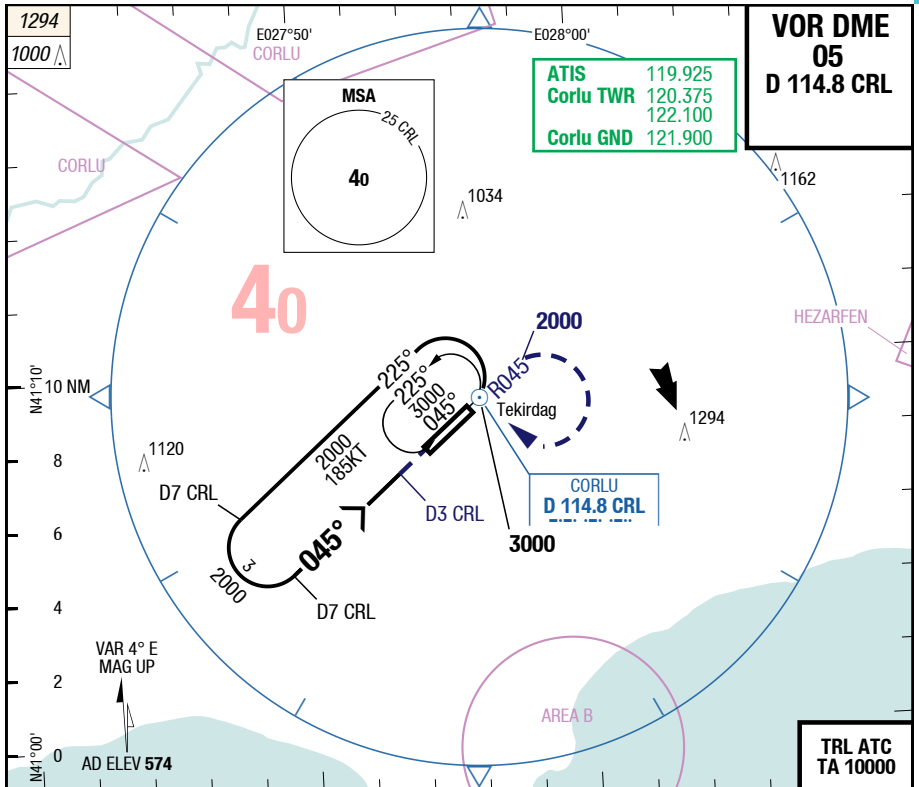
Changes: SUAs, OBST



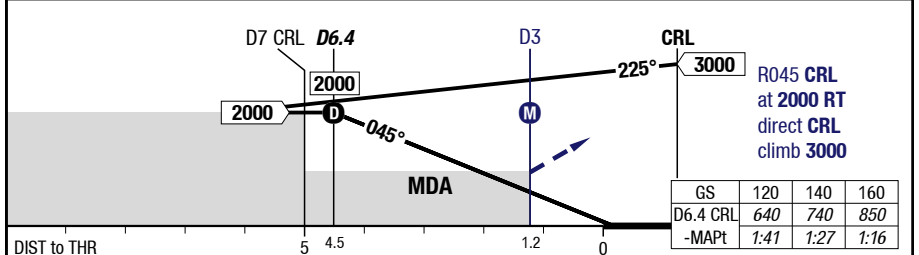
TEQ-LTBU

7-20

VOR DME 05



|                |  |  |      |      |      |      |                      |           |       |
|----------------|--|--|------|------|------|------|----------------------|-----------|-------|
| 3.00°<br>D CRL |  |  | 6.4  | 6    | 5    | 4    | Flashing lights 600m | 3.0°      | 60 HL |
|                |  |  | 2000 | 1880 | 1570 | 1250 | <b>05</b>            | 3000 x 45 | 15 HL |
|                |  |  |      |      |      |      |                      | 3.0°      |       |



|           |                 |                          |                           |                            |
|-----------|-----------------|--------------------------|---------------------------|----------------------------|
| <b>05</b> |                 | <b>VOR DME</b>           | <b>VOR DME</b><br>APL U/S | <b>Circling</b>            |
| C         | ft - m/km<br>ft | 390 - 1.3V<br><b>900</b> | 390 - 2.2V<br><b>900</b>  | 1130 - 5.0V<br><b>1700</b> |
| D         | ft - m/km<br>ft | 390 - 1.3V<br><b>900</b> | 390 - 2.2V<br><b>900</b>  | 1130 - 5.0V<br><b>1700</b> |

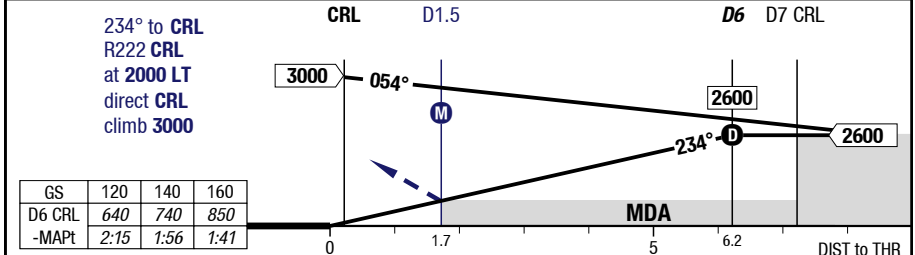
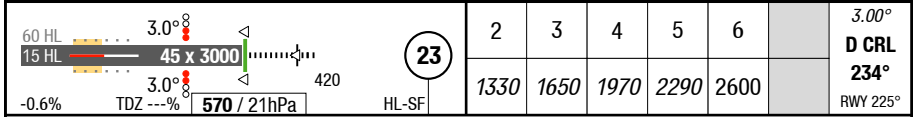
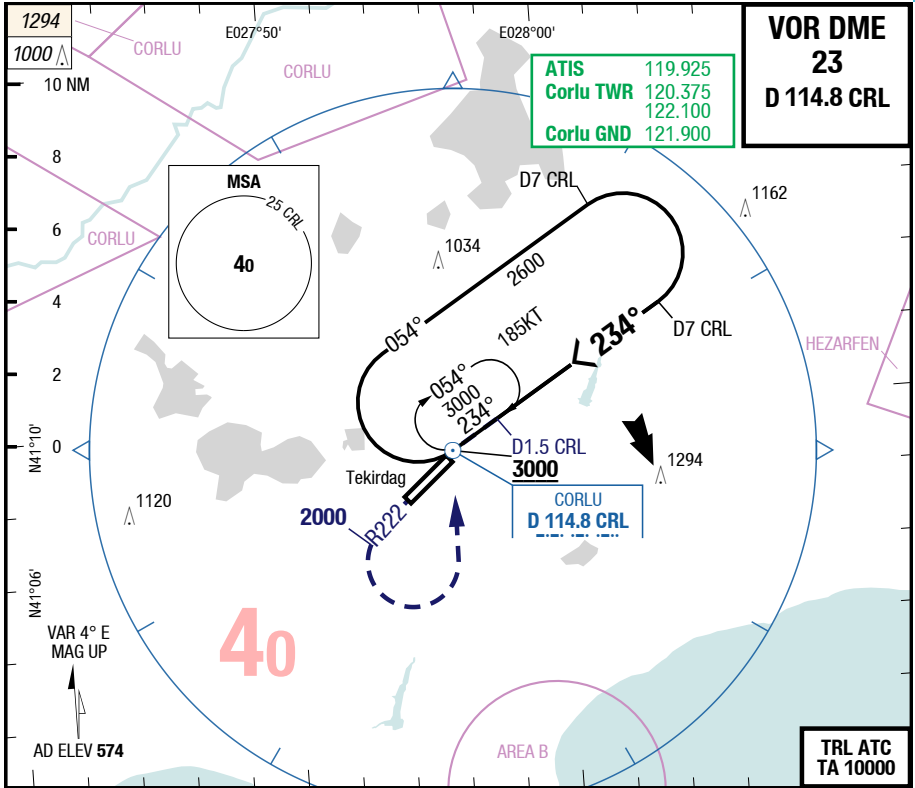
Changes: SUAs, OBST

19-MAY-2016

TEQ-LTBU

7-30

VOR DME 23



|           |                 |                    |                    |  |  |                     |
|-----------|-----------------|--------------------|--------------------|--|--|---------------------|
| <b>23</b> | VOR DME         | VOR DME<br>APL U/S |                    |  |  | Circling            |
| C         | ft - m/km<br>ft | 430 - 2.0V<br>1000 | 430 - 2.4V<br>1000 |  |  | 1130 - 5.0V<br>1700 |
| D         | ft - m/km<br>ft | 430 - 2.0V<br>1000 | 430 - 2.4V<br>1000 |  |  | 1130 - 5.0V<br>1700 |

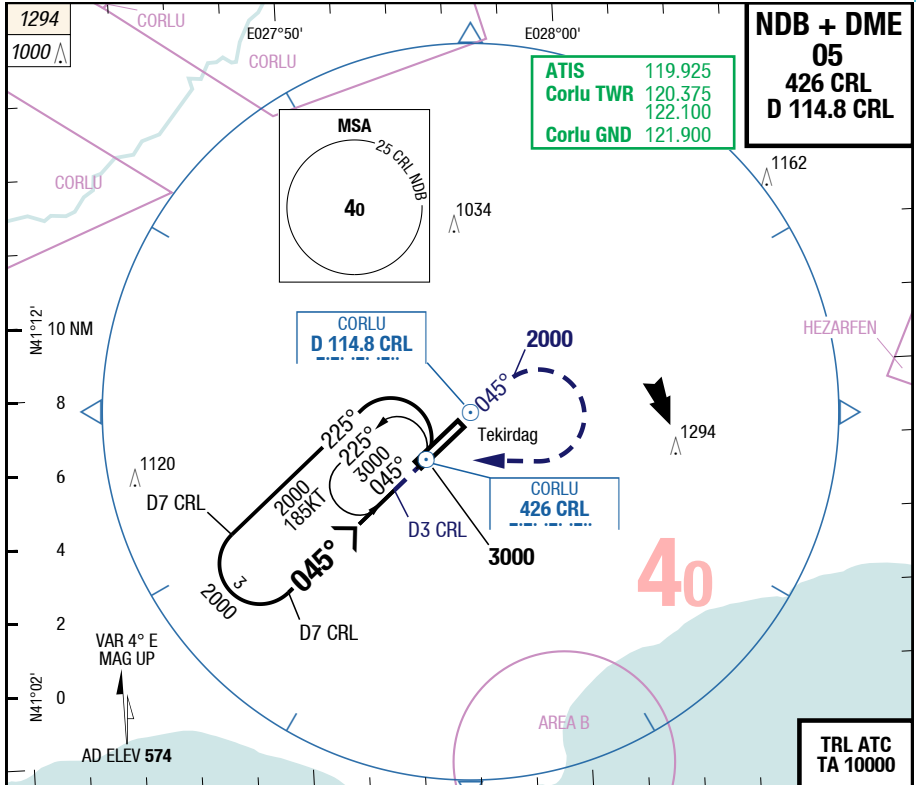
Changes: MIN

19-MAY-2016

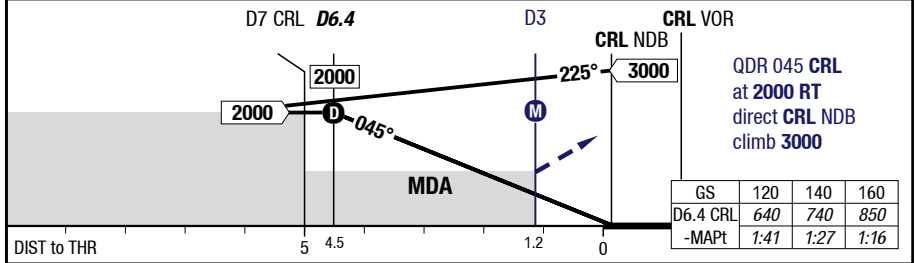
TEQ-LTBU

7-40

NDB + DME 05



|                |      |      |      |      |  |                      |       |             |          |       |
|----------------|------|------|------|------|--|----------------------|-------|-------------|----------|-------|
| 3.00°<br>D CRL |      |      |      |      |  | Flashing lights 600m | HL-P2 | 509 / 18hPa | TDZ ---% | +0.6% |
|                | 6.4  | 6    | 5    | 4    |  |                      |       |             |          |       |
|                | 2000 | 1880 | 1570 | 1250 |  |                      |       |             |          |       |



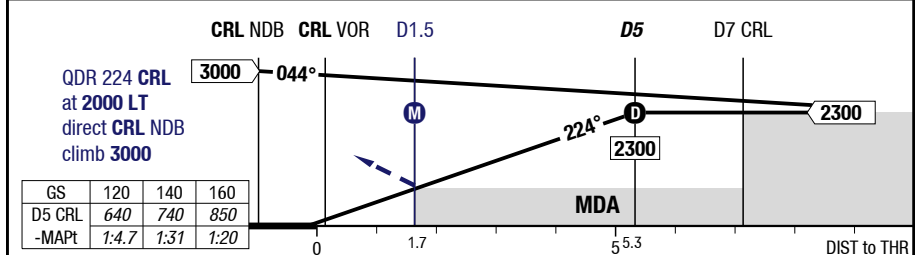
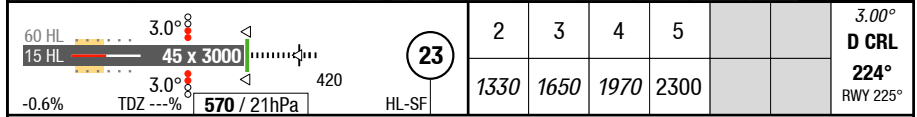
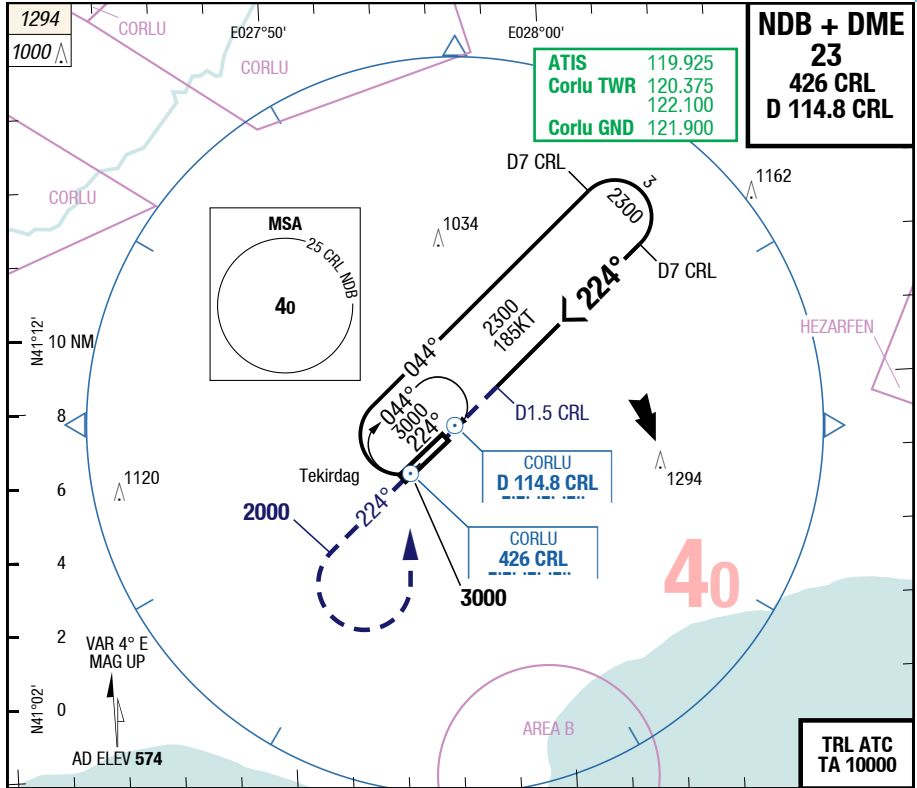
|           |   |           |                          |                          |          |
|-----------|---|-----------|--------------------------|--------------------------|----------|
| <b>05</b> | C | ft - m/km | NDB DME<br>CRL           | NDB DME<br>CRL APL U/S   | Circling |
|           |   | ft        | 390 - 1.3V<br><b>900</b> | 390 - 2.2V<br><b>900</b> |          |
| <b>05</b> | D | ft - m/km | NDB DME<br>CRL           | NDB DME<br>CRL APL U/S   | Circling |
|           |   | ft        | 390 - 1.3V<br><b>900</b> | 390 - 2.2V<br><b>900</b> |          |

Changes: Nil

TEQ-LTBU

7-50

NDB + DME 23

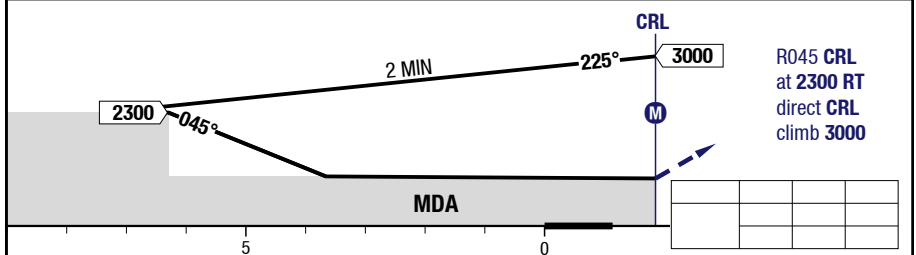
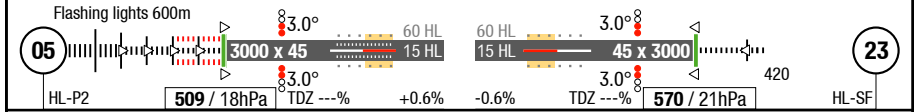
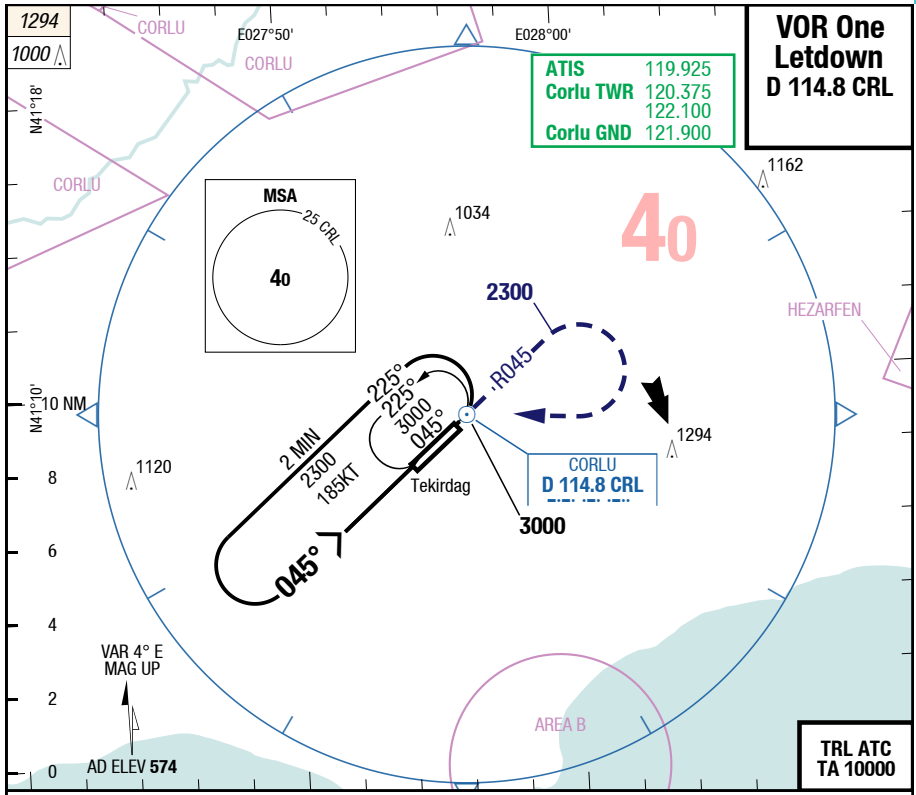


|           |  |                               |                            |
|-----------|--|-------------------------------|----------------------------|
| <b>23</b> | <b>NDB DME</b><br>CRL                        | <b>NDB DME</b><br>CRL APL U/S | <b>Circling</b>            |
| C         | ft - m/km<br>ft<br>480 - 2.2V<br><b>1050</b> | 480 - 2.6V<br><b>1050</b>     | 1130 - 5.0V<br><b>1700</b> |
| D         | ft - m/km<br>ft<br>480 - 2.2V<br><b>1050</b> | 480 - 2.6V<br><b>1050</b>     | 1130 - 5.0V<br><b>1700</b> |

TEQ-LTBU

7-60

VOR One Letdown



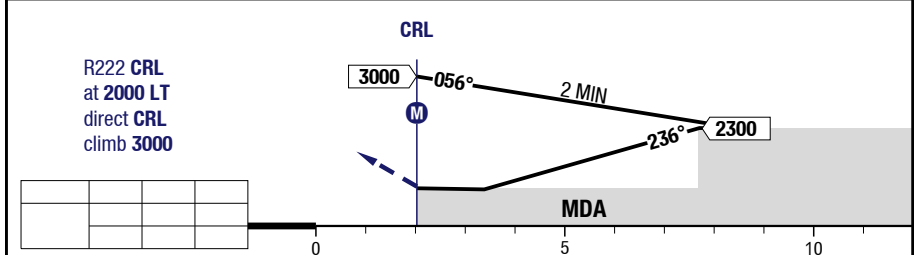
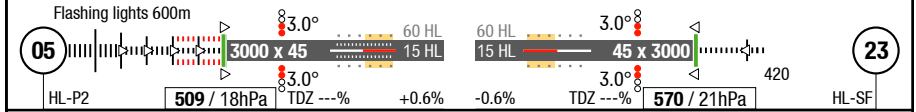
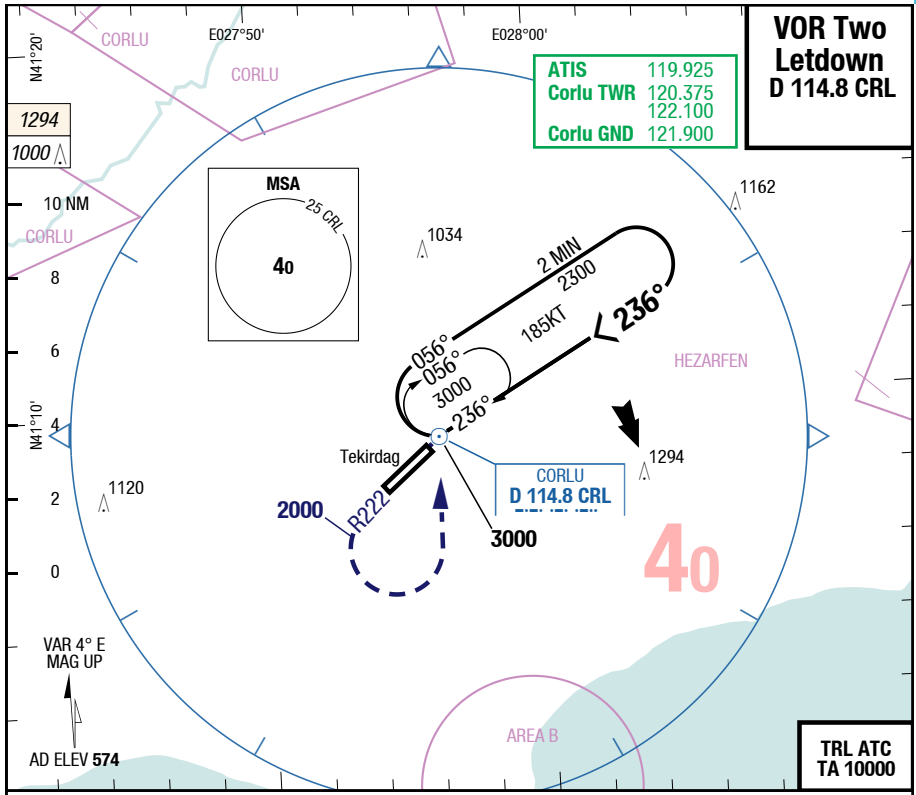
| 05/23 |                 | Letdown VOR                   |  |  |  | Circling            |
|-------|-----------------|-------------------------------|--|--|--|---------------------|
| C     | ft - m/km<br>ft | Straight-in<br>Not authorized |  |  |  | 1130 - 5.0V<br>1700 |
| D     | ft - m/km<br>ft | Straight-in<br>Not authorized |  |  |  | 1130 - 5.0V<br>1700 |

Changes: SUAs, OBST

TEQ-LTBU

7-70

VOR Two Letdown



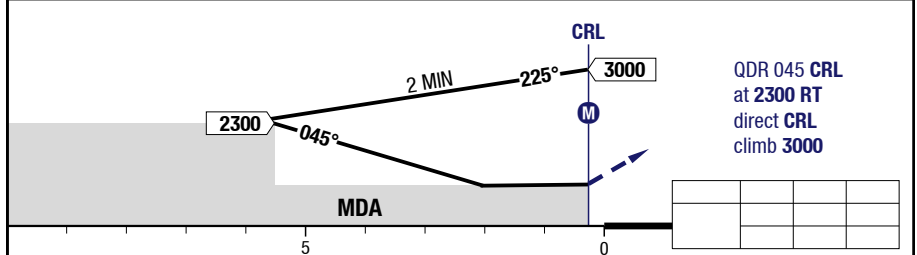
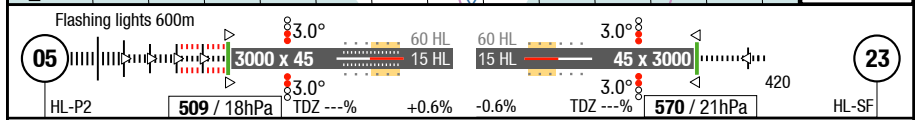
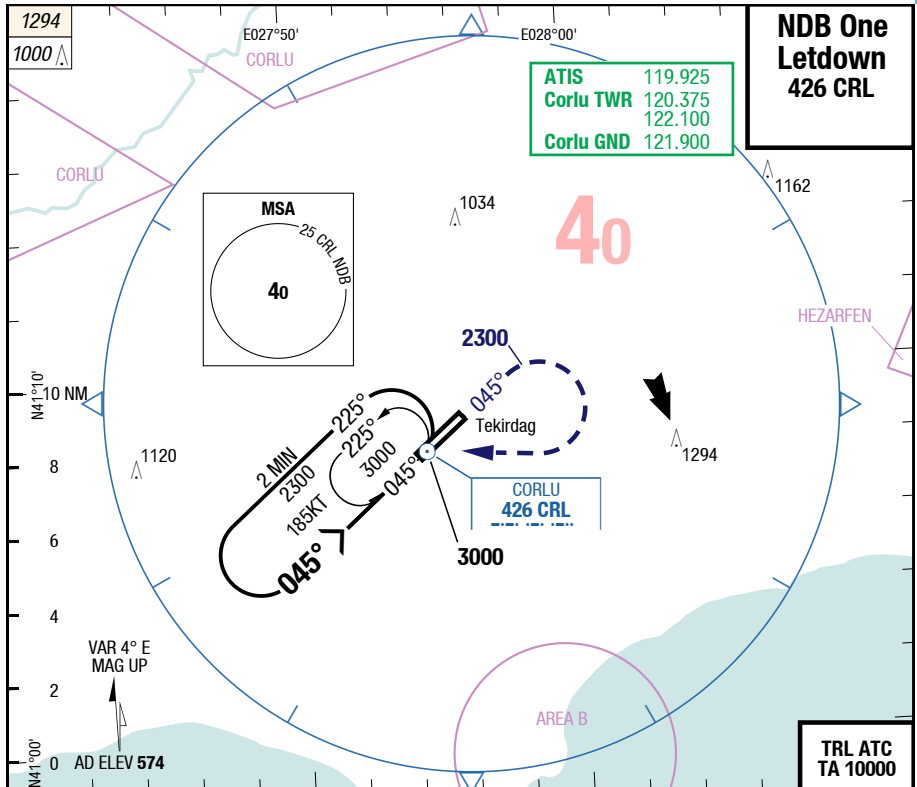
| 05/23 |                 | Letdown VOR                   |  |  |  |  | Circling            |
|-------|-----------------|-------------------------------|--|--|--|--|---------------------|
| C     | ft - m/km<br>ft | Straight-in<br>Not authorized |  |  |  |  | 1130 - 5.0V<br>1700 |
| D     | ft - m/km<br>ft | Straight-in<br>Not authorized |  |  |  |  | 1130 - 5.0V<br>1700 |

Changes: SUAs, OBST

TEQ-LTBU

7-80

NDB One Letdown



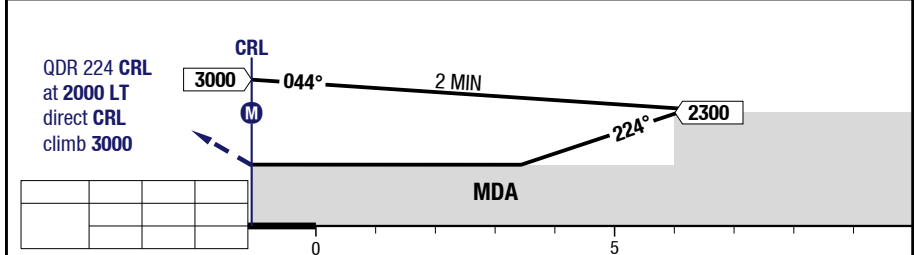
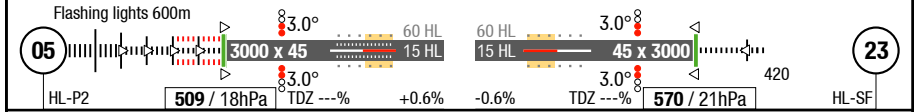
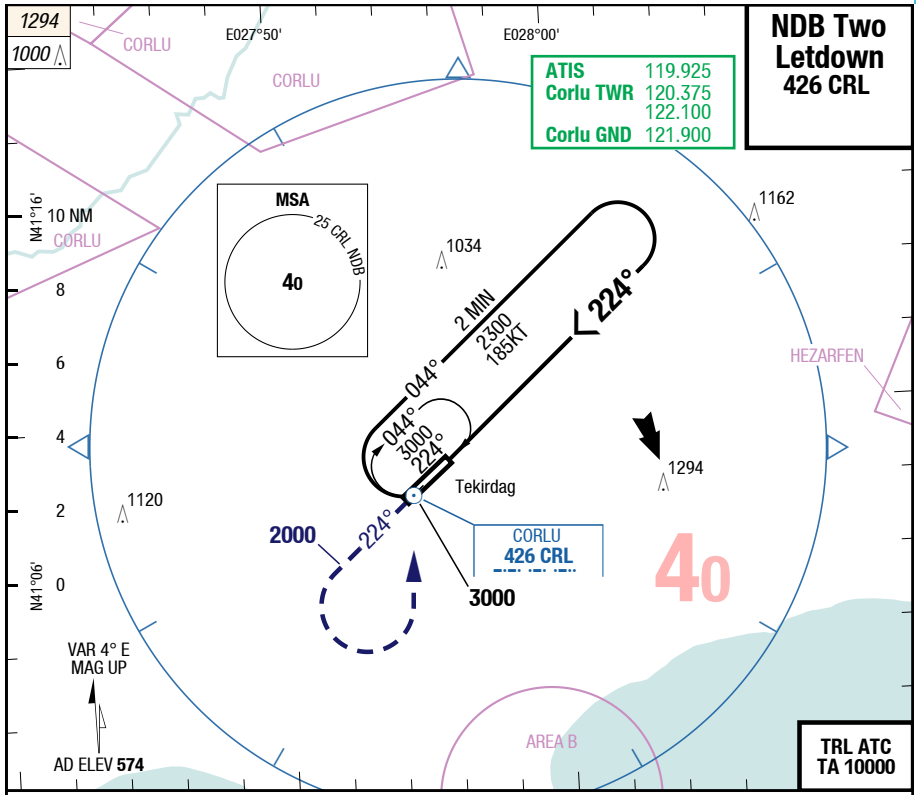
| 05/23 |                 | Letdown NDB                   |  |  |  |  | Circling            |
|-------|-----------------|-------------------------------|--|--|--|--|---------------------|
| C     | ft - m/km<br>ft | Straight-in<br>Not authorized |  |  |  |  | 1130 - 5.0V<br>1700 |
| D     | ft - m/km<br>ft | Straight-in<br>Not authorized |  |  |  |  | 1130 - 5.0V<br>1700 |

Changes: SUAs, OBST

TEQ-LTBU

7-90

NDB Two Letdown



| 05/23 |                 | Letdown NDB                   |  |  |  | Circling            |
|-------|-----------------|-------------------------------|--|--|--|---------------------|
| C     | ft - m/km<br>ft | Straight-in<br>Not authorized |  |  |  | 1130 - 5.0V<br>1700 |
| D     | ft - m/km<br>ft | Straight-in<br>Not authorized |  |  |  | 1130 - 5.0V<br>1700 |

Changes: SUAs, OBST