

GENERAL

Operational Hours

ATS Hours / AD ADMIN Hours: H24

Airport Information

RFF: CAT 8
Fuel: JP-8
PCN: RWY 07L/25R: 110/R/C/W/T
LCN: RWY 07R/25L: 50
Customs: HO with PPR

Operation

TWY Restrictions

TWY C5 width 19m / 62ft.
 TWY B1, B6, Z, C1 width 15m / 49ft.
 TWY A2, A3, A4, A5, B2, B3, B4, B5, D1, D2, C2, C3, C4 width 12m / 39ft.

Warnings

BRY NDB unusable:
 190°-250° beyond 15NM.
BRY VOR/DME unusable:
 R190-R240 beyond 15NM below 11000ft
 R240-R250 beyond 20NM below 11000ft
 Birds in vicinity of AD.

ARRIVAL

Speed

MAX IAS 250KT within TMA at or below FL100 (refer to RFCs)

DEPARTURE

Take-off Minima

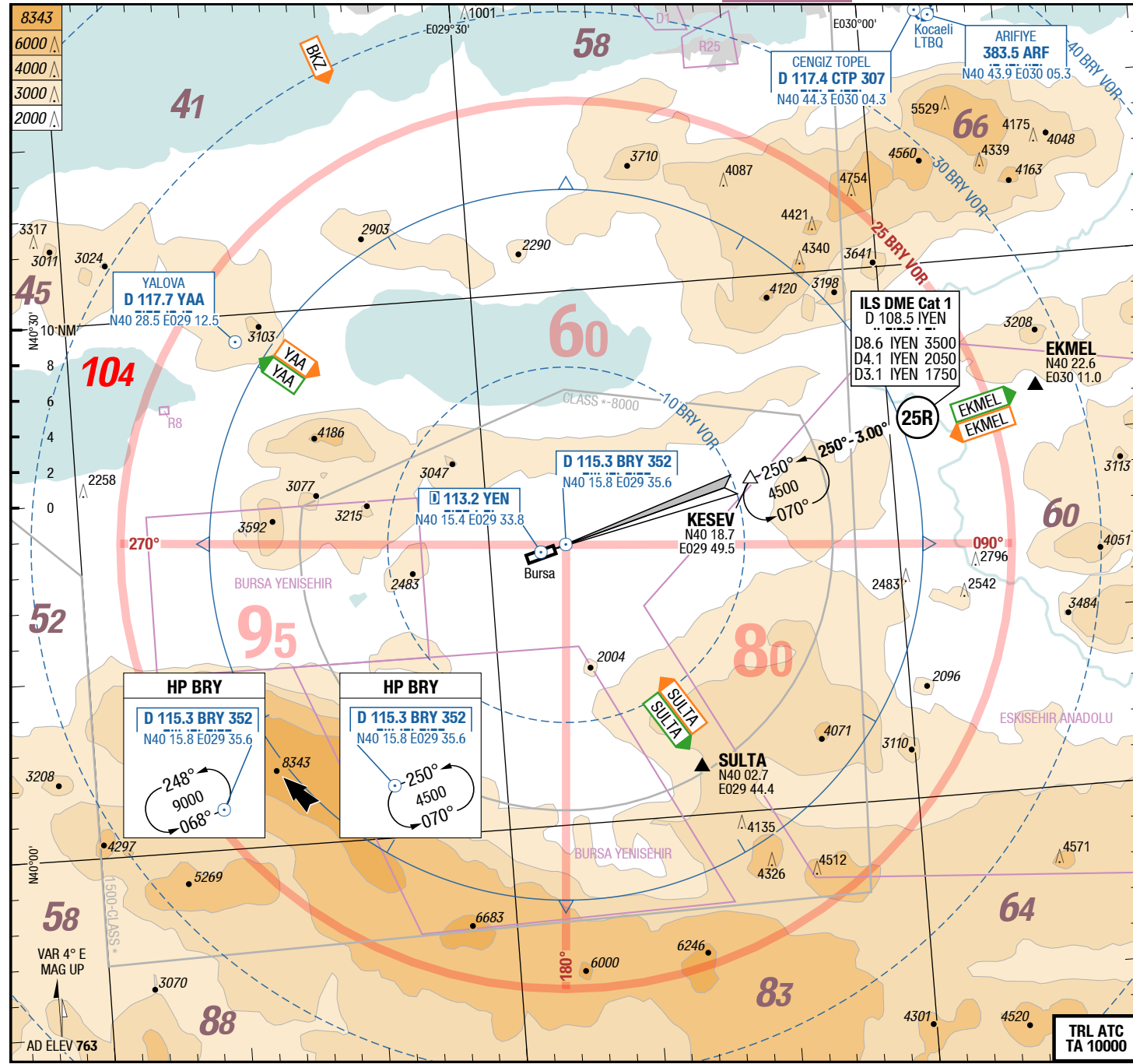
RWY		07L/25R (CIV RWY)	
All ACFT	ft - m/km	0 - 400R/400V	-
RWY		07R/25L (MIL RWY)	
All ACFT	ft - m/km	0 - 400R/400V	-

ATC Clot, Clearance

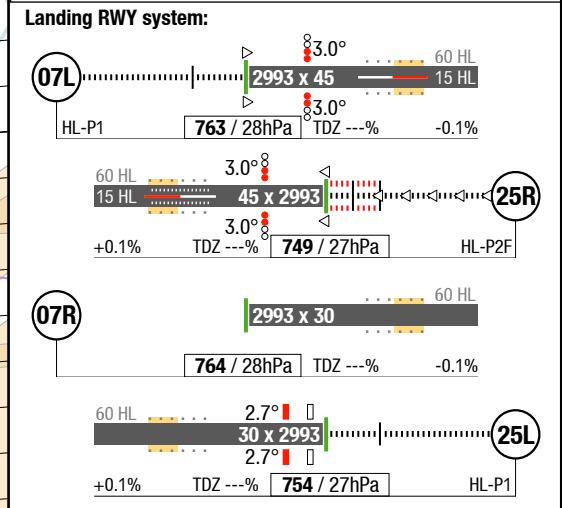
Start-up: For start-up PROCs see CRAR Turkey.

De-icing

AVBL.



ATIS	124.575
Yenisehir APP	127.750
	124.200
Yenisehir TWR	124.200
	127.750
GND	121.700



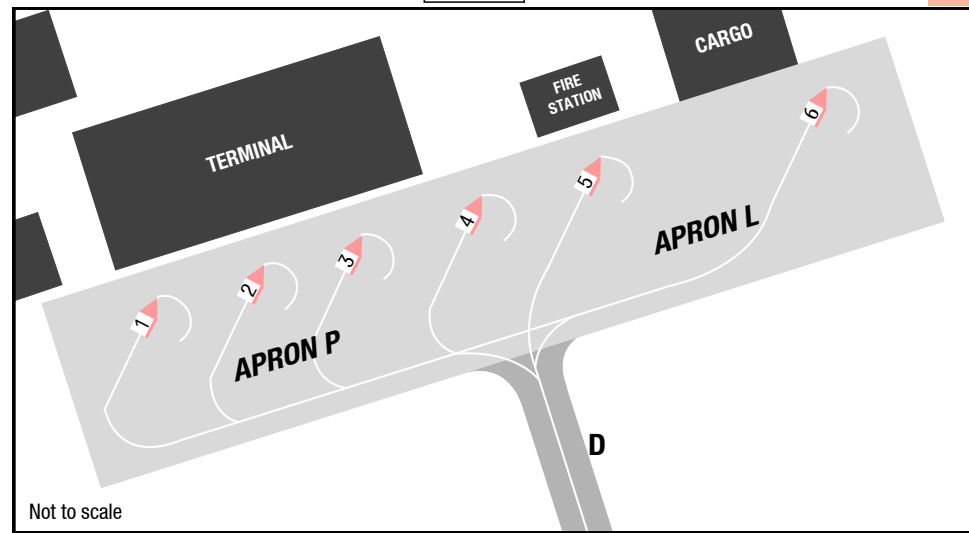
3-20

AGC

AGC

AGC

AGC

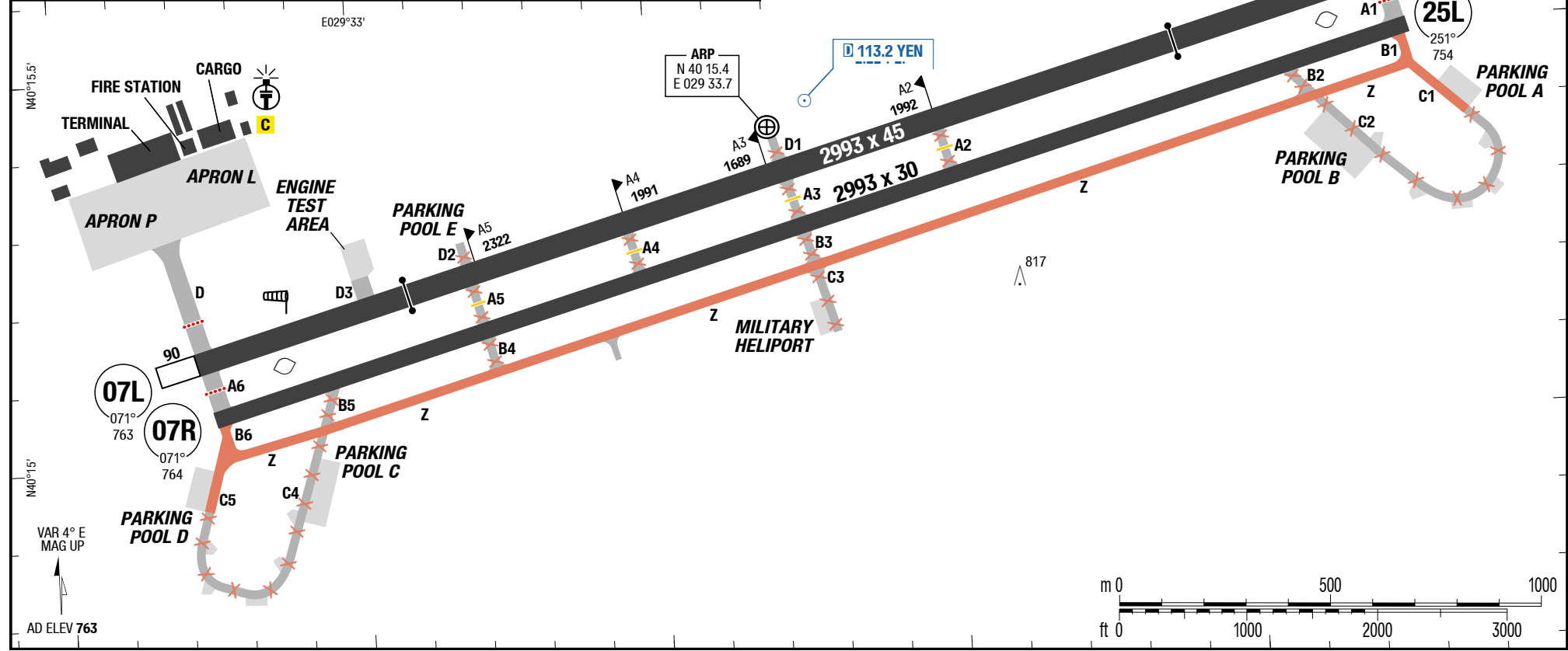


COORDINATES

1	N40 15.3	E029 32.5
2, 3	N40 15.3	E029 32.6
4, 5	N40 15.4	E029 32.7
6	N40 15.4	E029 32.8

ATIS	124.575
Yenisehir TWR	124.200
	127.750
GND	121.700

RWY	TORA	ASDA	TODA
07L	2993	3083	3343
25R	2993	3083	3323



Changes: TWY width , Editorial

EKMEL 1B / SULTA 1A / SULTA 1B / YALOVA 1B / EKMEL 1D / SULTA 1C / SULTA 1D / YALOVA 1D

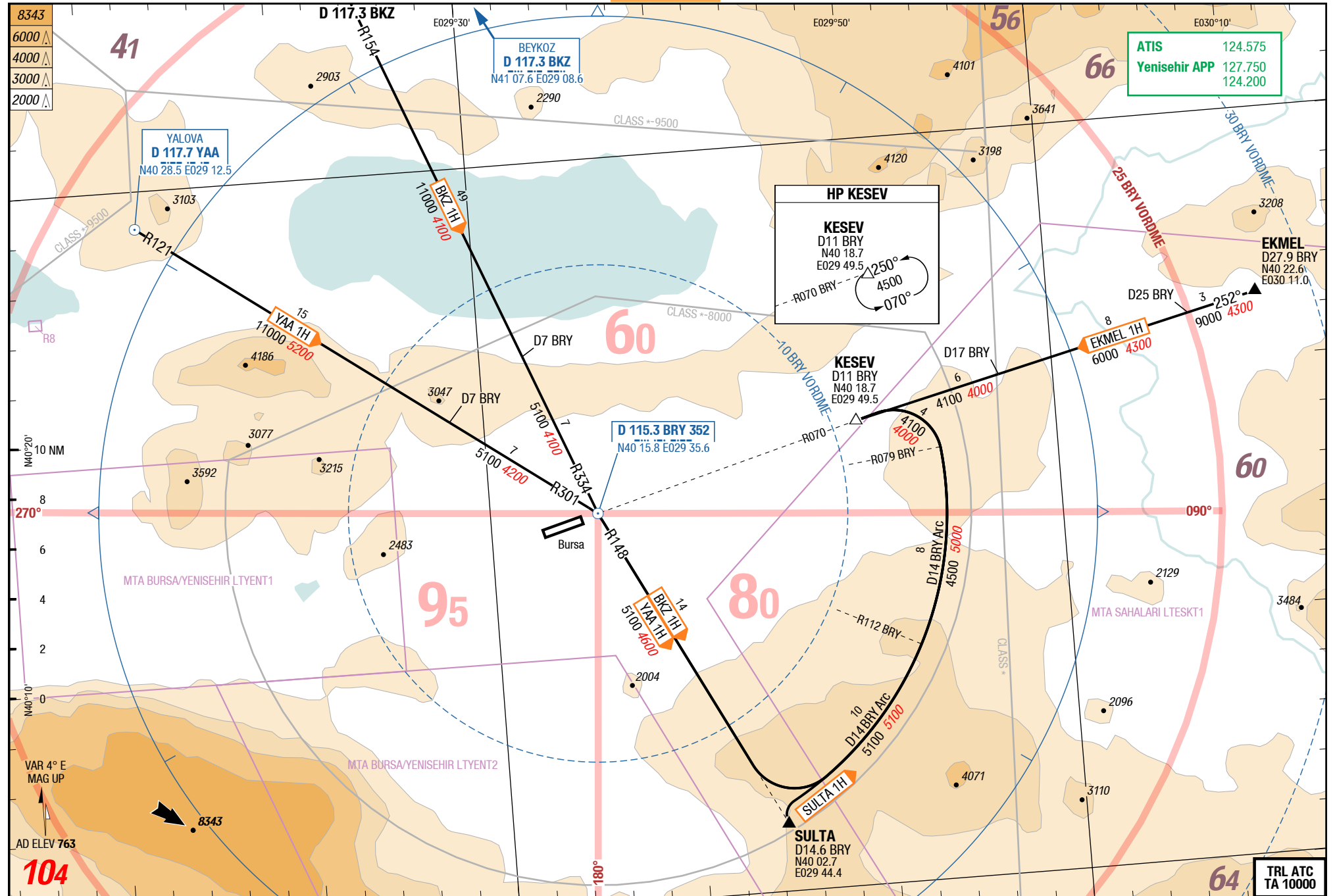
RWYs 07L (071°) / 25R (251°)

	GS	120	150	180	210	240	270
5.5%	ft/MIN	700	900	1100	1200	1400	1600
6.7%	ft/MIN	900	1100	1300	1500	1700	1900

DESIGNATOR	ROUTING	ALTITUDES
	Runway 07L	
EKMEL 1B 5.5% 127.750	intercept R071 BRY to EKMEL - join AWY G8	D7 BRY MNM 3300
SULTA 1A 5.5% 127.750	intercept R071 BRY - at D7 BRY RT follow D7 BRY arc - intercept R148 BRY to SULTA - join AWY W714/W715	D7 BRY MNM 3300
SULTA 1B 5.5% 127.750	intercept R071 BRY - at D7 BRY RT direct BRY - R148 BRY to SULTA - join AWY W714/W715	D7 BRY MNM 3300
YALOVA 1B YAA 1B 5.5% 127.750	intercept R071 BRY - at D7 BRY RT direct BRY - R302 BRY to YAA - join AWY W714	D7 BRY MNM 3300
	Runway 25R	
EKMEL 1D 6.7% to 2700 5.5% 127.750	intercept R251 BRY - at D7 BRY LT direct BRY - R071 BRY to EKMEL - join AWY G8	D7 BRY MNM 2700
SULTA 1C 6.7% to 2700 5.5% 127.750	intercept R251 BRY - at D7 BRY LT follow D7 BRY arc - intercept R148 BRY to SULTA - join AWY W714/W715	D7 BRY MNM 2700
SULTA 1D 6.7% to 2700 5.5% 127.750	intercept R251 BRY - at D7 BRY LT direct BRY - R148 BRY to SULTA - join AWY W714/W715	D7 BRY MNM 2700
YALOVA 1D YAA 1D 6.7% to 2700 5.5% 127.750	intercept R251 BRY - at D7 BRY LT direct BRY - R302 BRY to YAA - join AWY W714	D7 BRY MNM 2700

Changes: FREQ, Track

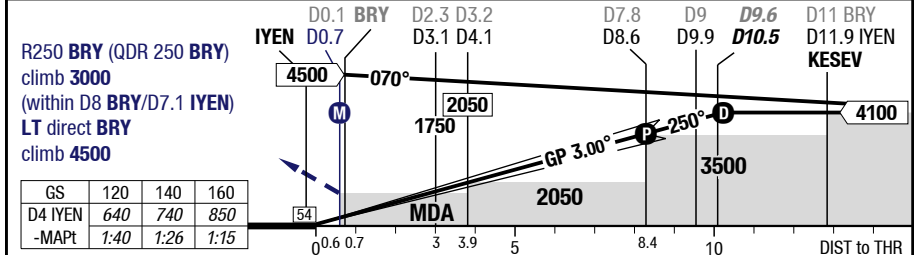
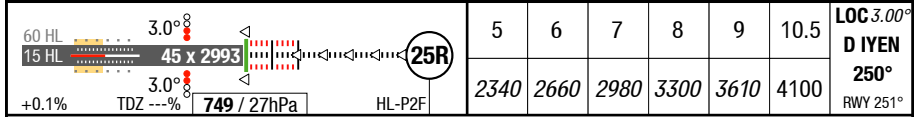
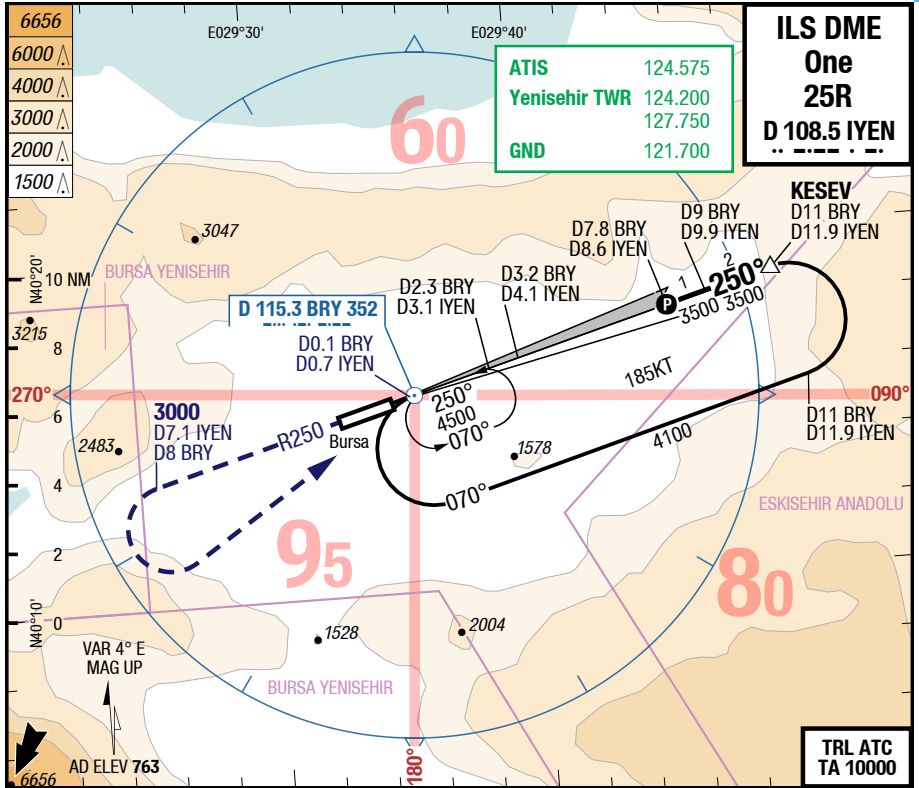




YEI-LTBR

7-10

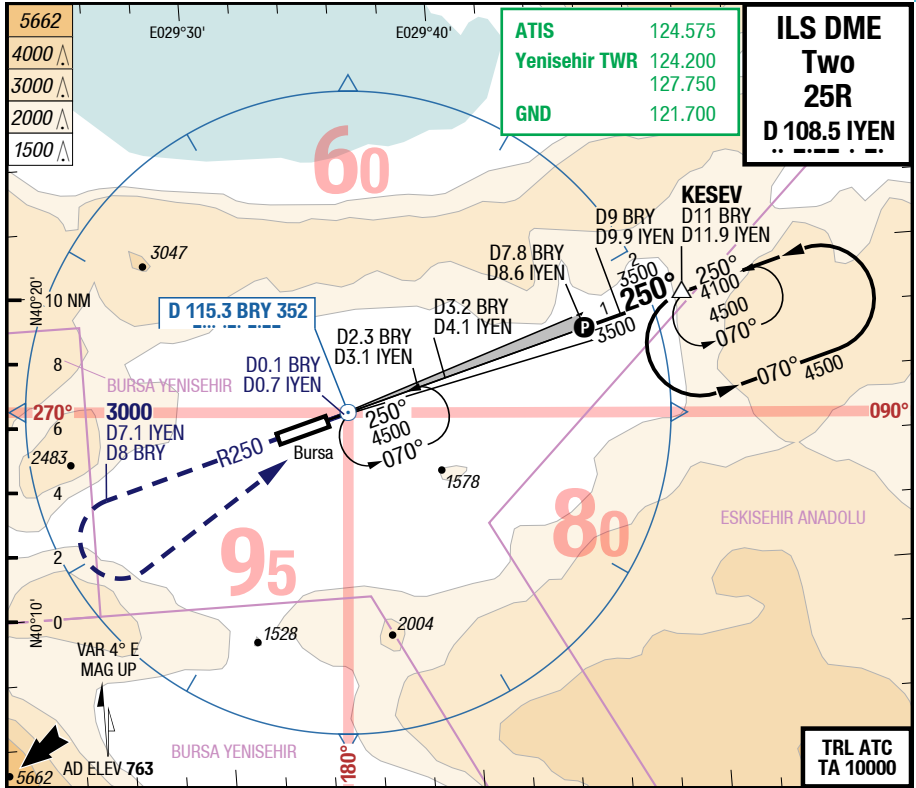
ILS DME One 25R



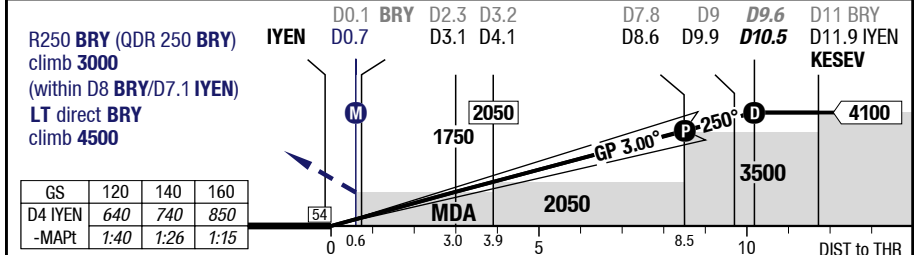
	25R	Cat 1 DME GA 5.4%	Cat 1 DME GA 2.5% 1)	LOC DME 2)	Circling
C	ft - m/km ft	210 - 550 960	910 - 2.4 1660	1010 - 2.4 1750	2240 - 2.4V 3000
D	ft - m/km ft	210 - 550 960	910 - 2.4 1660	1010 - 2.4 1750	2240 - 3.6V 3000

1) With EVS 1.6km
2) Timing to determine MAPt NA

Changes: Completely revised



60 HL	3.0°										LOC 3.00°
15 HL	45 x 2993										D IYEN
+0.1%	TDZ	749 / 27hPa									250°
											RWY 251°



25R	Cat 1 DME GA 5.4%	Cat 1 DME GA 2.5% 1)	LOC DME 2)	Circling
C	ft - m/km ft 210 - 550 960	910 - 2.4 1660	1010 - 2.4 1750	2240 - 2.4V 3000
D	ft - m/km ft 210 - 550 960	910 - 2.4 1660	1010 - 2.4 1750	2240 - 3.6V 3000

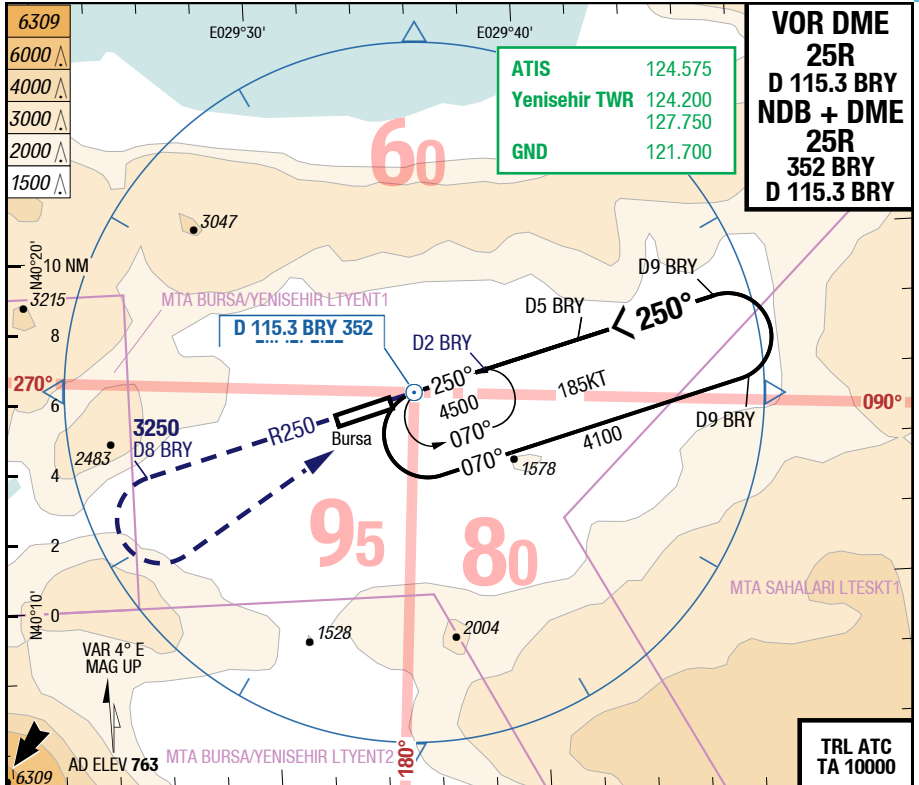
1) With EVS 1.6km
2) Timing to determine MAPt NA

Changes: Completely revised

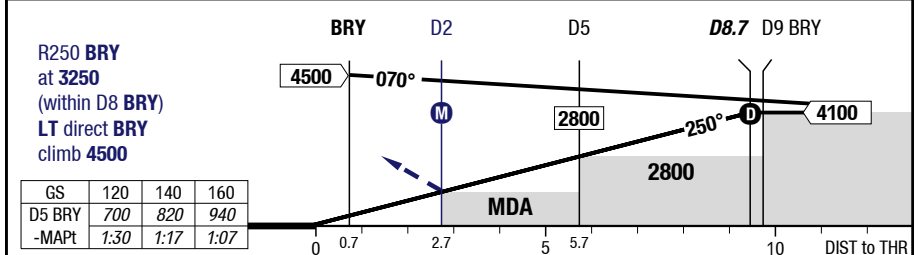
YEI-LTBR

7-30

VOR DME 25R / NDB + DME 25R



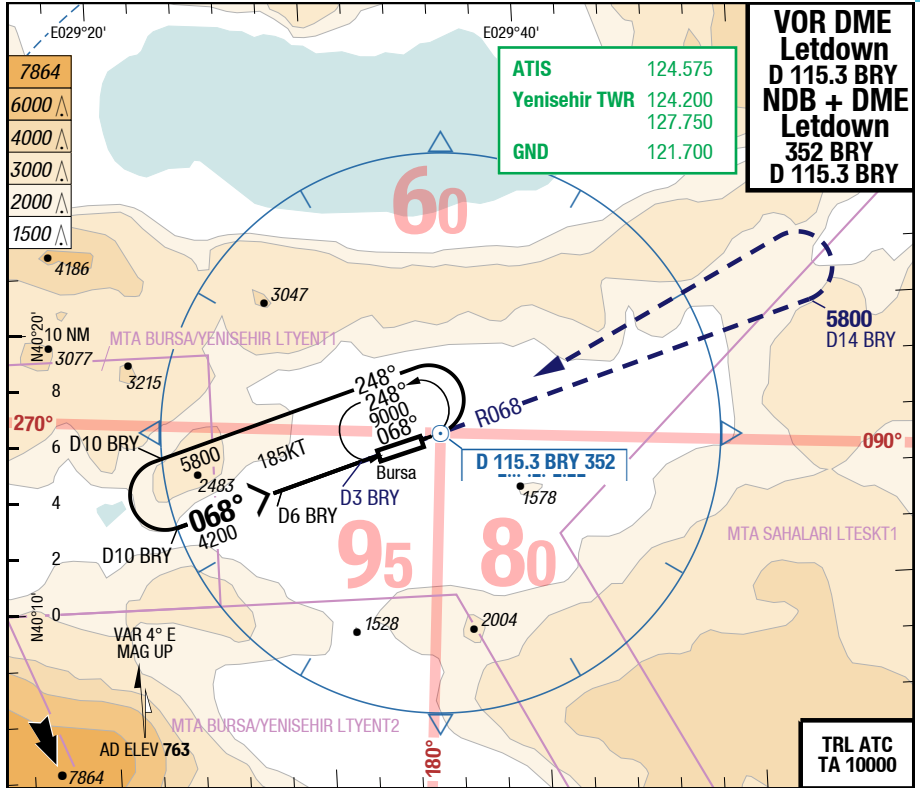
60 HL	3.0°	3	4	6	7	8.7	3.31°	
15 HL	45 x 2993						(25R)	D BRY
+0.1%	TDZ ---%	749 / 27hPa	2100	2460	3160	3510	4100	250°
								RWY 251°



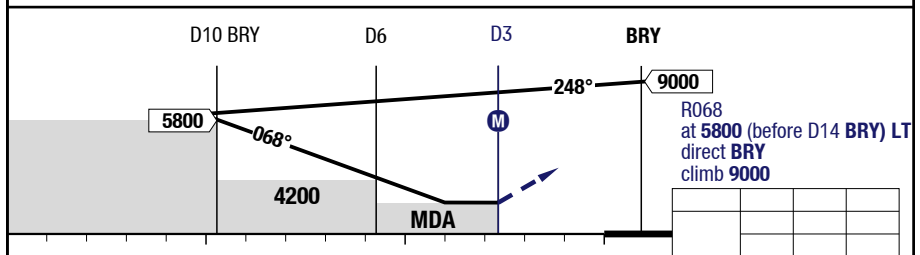
25R		VOR DME	VOR DME	NDB DME	NDB DME	Circling
C	ft - m/km ft	960 - 3.9V 1700	960 - 4.6V 1700	960 - 3.9V 1700	960 - 4.6V 1700	
D	ft - m/km ft	960 - 3.9V 1700	960 - 4.6V 1700	960 - 3.9V 1700	960 - 4.6V 1700	

Changes: FREQ, SUAs

THIS CHART IS A PART OF NAVIGRAPH CHARTS AND IS INTENDED FOR FLIGHT SIMULATION USE ONLY



See AFC for RWY information and approach light system.



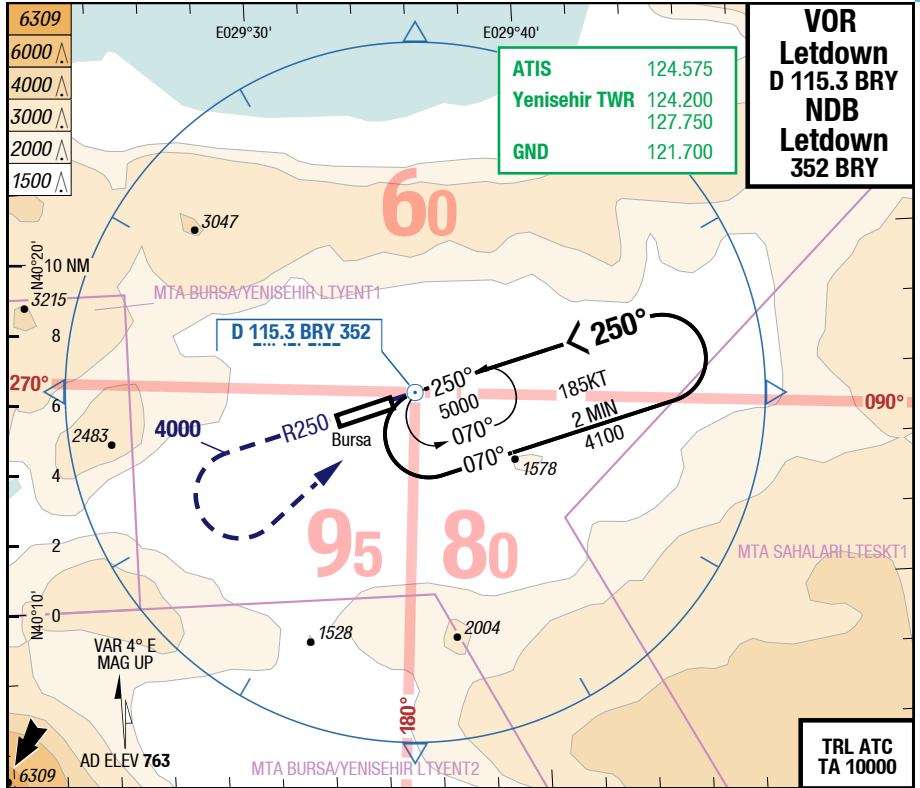
All RWYs		Letdown VOR DME BRY	Letdown NDB DME BRY			Circling
C	ft - m/km ft	Straight-in Not authorized	Straight-in Not authorized			2240 - 5.0V 3000
D	ft - m/km ft	Straight-in Not authorized	Straight-in Not authorized			2240 - 5.0V 3000

Changes: FREQ, SUAs

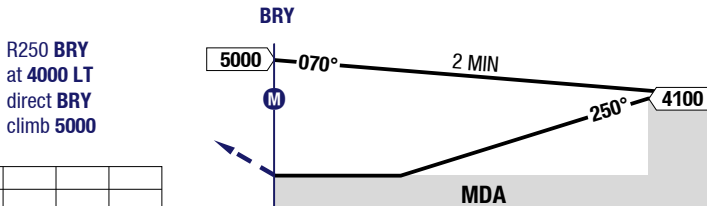
YEI-LTBR

7-50

VOR Letdown / NDB Letdown



See AFC for RWY information and approach light system.



All RWYs		Letdown VOR	Letdown NDB				Circling
C	ft - m/km ft	Straight-in Not authorized	Straight-in Not authorized				2240 - 5.0V 3000
D	ft - m/km ft	Straight-in Not authorized	Straight-in Not authorized				2240 - 5.0V 3000

Changes: FREQ, SUAs