

GENERAL

Operational Hours

ATS Hours / AD ADMIN Hours: See NOTAM

Airport Information

RFF: CAT 7

PCN: RWY 11/29: 110/R/C/W/T

Warnings

Birds in vicinity of AD.

ARRIVAL

Speed

MAX IAS 250KT within TMA at or below FL100 (refer RFCs).

DEPARTURE

Take-off Minima

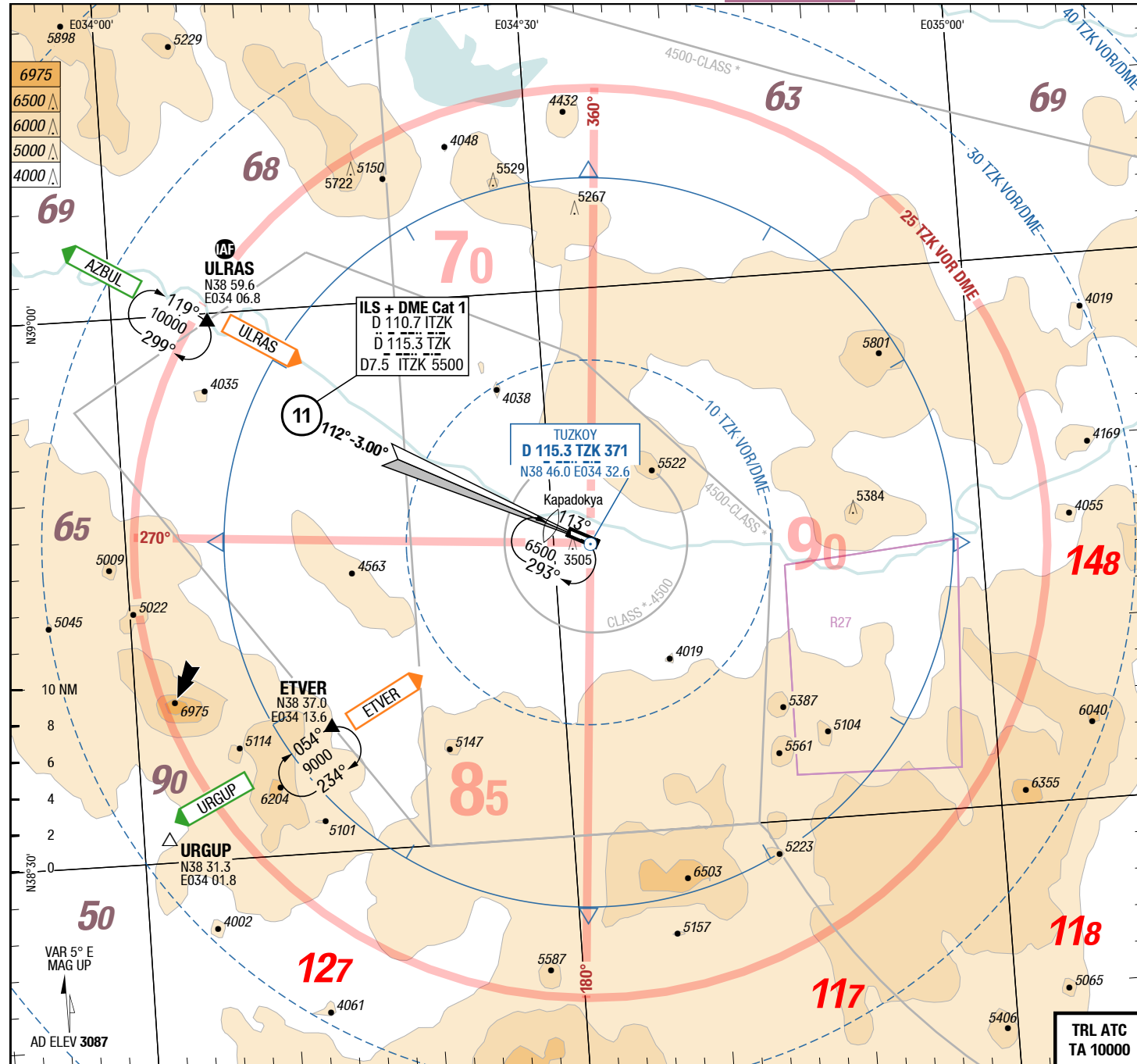
RWY		11/29	
All ACFT	ft - m/km	0 - 400R/400V	-

Speed

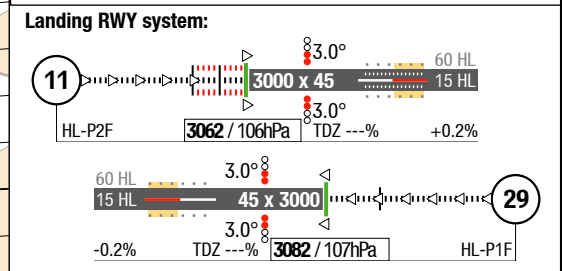
MAX IAS 250KT within TMA at or below FL100 (refer RFCs).

ATC Slot, Clearance

Start-up: For start-up PROCs see CRAR Turkey.

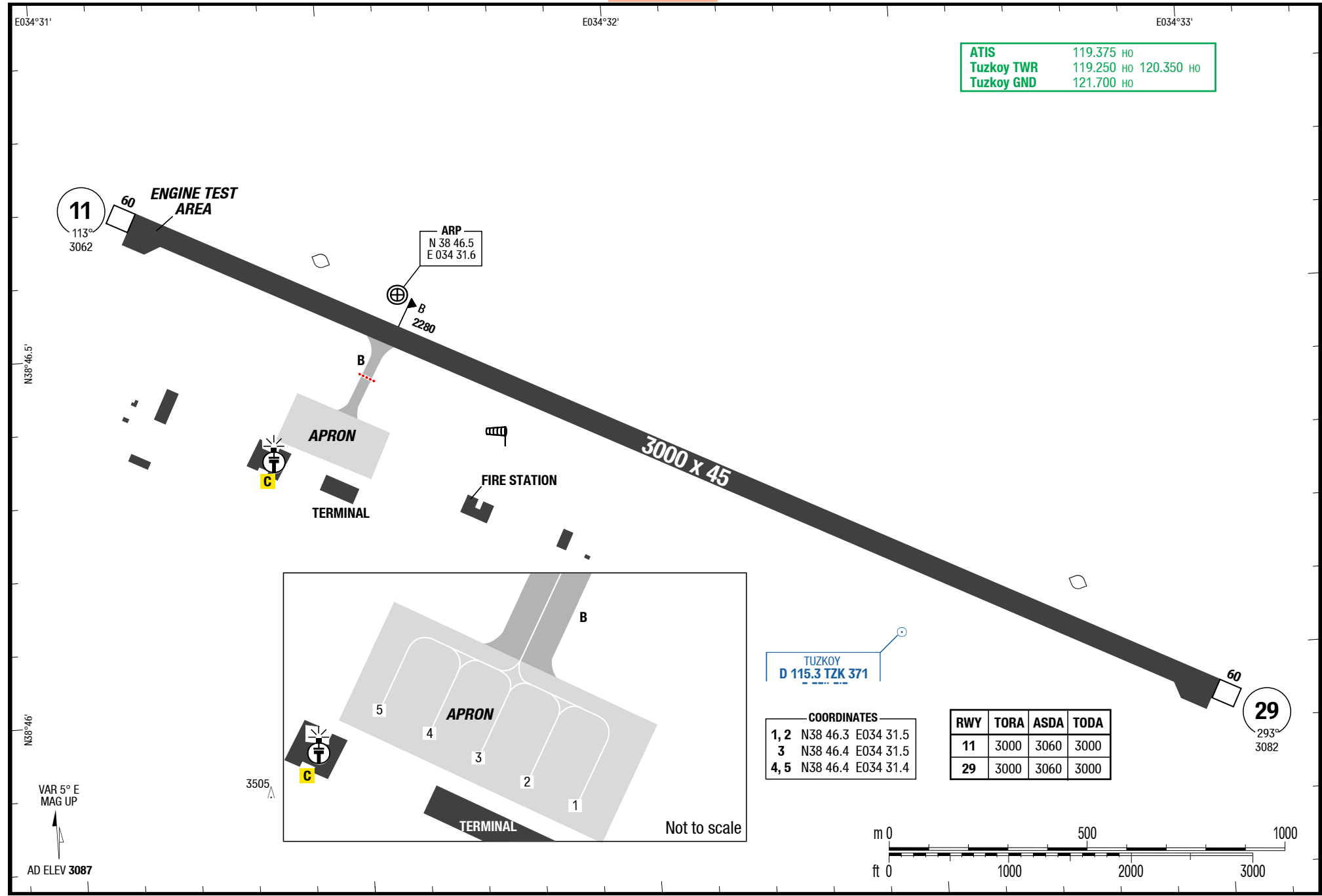


ATIS 119.375 HO
 Tuzkoy APP/TWR 119.250 HO
 120.350 HO
 Tuzkoy GND 121.700 HO



Changes: FREQ, SUAs, AD Name

3-20



Effective 21-JUL-2016

14-JUL-2016

NAV-LT AZ

Turkey Kapadokya

NIL
SIDs

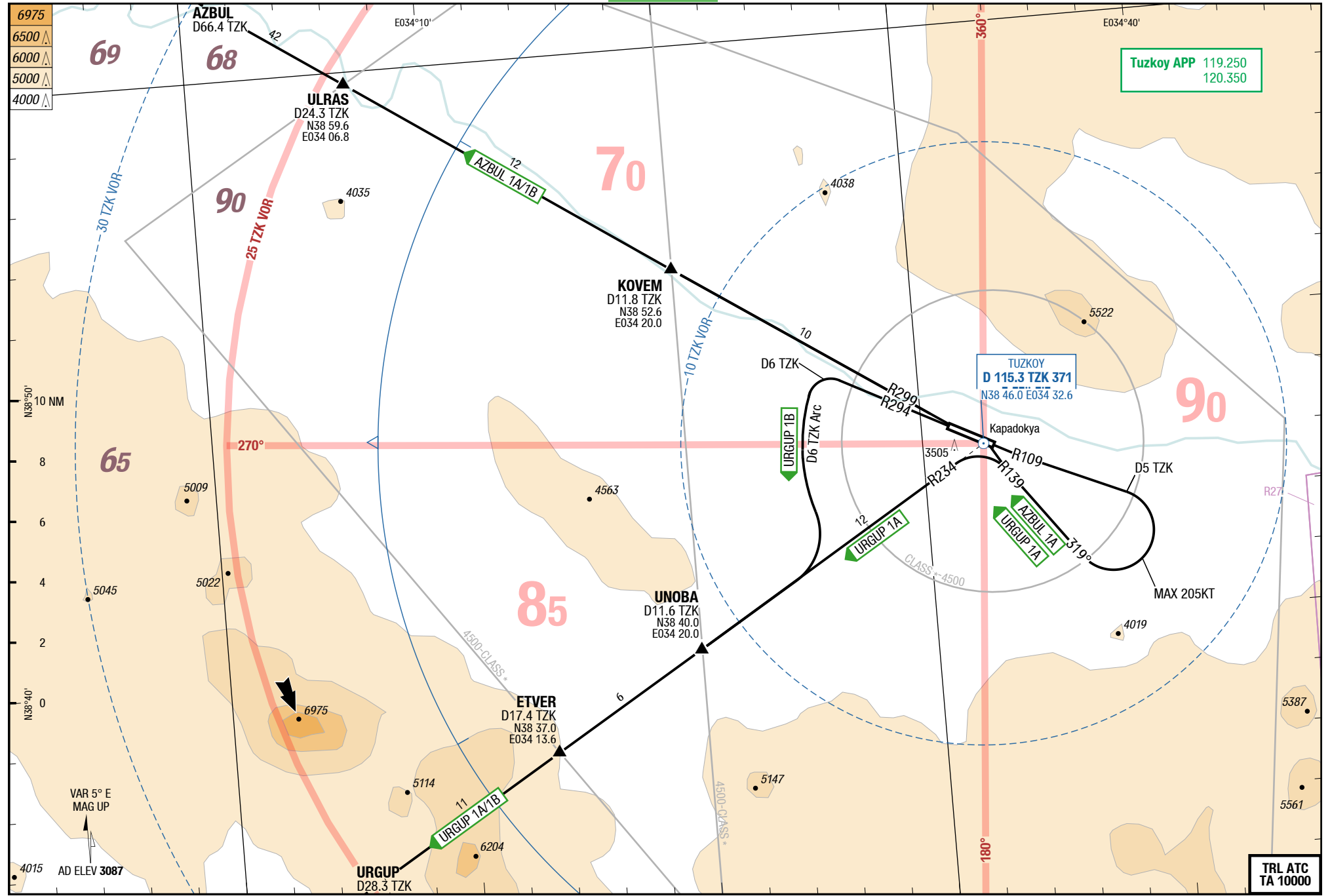
SID

SID

Kapadokya Turkey

NIL
SIDs

4-10



Changes: FREQ, SUAs, AD Name

THIS CHART IS A PART OF NAVIGRAPH CHARTS AND IS INTENDED FOR FLIGHT SIMULATION USE ONLY

14-JUL-2016

NAV-LTAZ

5-10

SIDs

AZBUL 1A / URGUP 1A / AZBUL 1B / URGUP 1B

RWYs 11 (113°) / 29 (293°)

	GS	120	150	180	210	240	270
3.5%	ft/MIN	500	600	700	800	900	1000
3.7%	ft/MIN	500	600	700	800	900	1100
4.0%	ft/MIN	500	700	800	900	1000	1100

DESIGNATOR	ROUTING	ALTITUDES
	Runway 11	
AZBUL 1A 3.7% to 6000 120.350 ①	intercept R109 TZK - at D5 TZK RT (MAX 205KT) - intercept R139 TZK to TZK - R299 TZK - KOVEM - ULRAS - AZBUL	
URGUP 1A 3.7% to 6000 120.350 ①	intercept R109 TZK - at D5 TZK RT (MAX 205KT) - intercept R139 TZK to TZK - intercept R234 TZK - UNOBA - ETVER - URGUP	
	Runway 29	
AZBUL 1B 3.5% 120.350	intercept R299 TZK - KOVEM - ULRAS - AZBUL	
URGUP 1B 4.0% 120.350	intercept R294 TZK - at D6 TZK LT follow D6 TZK arc - intercept R234 TZK - UNOBA - ETVER - URGUP	

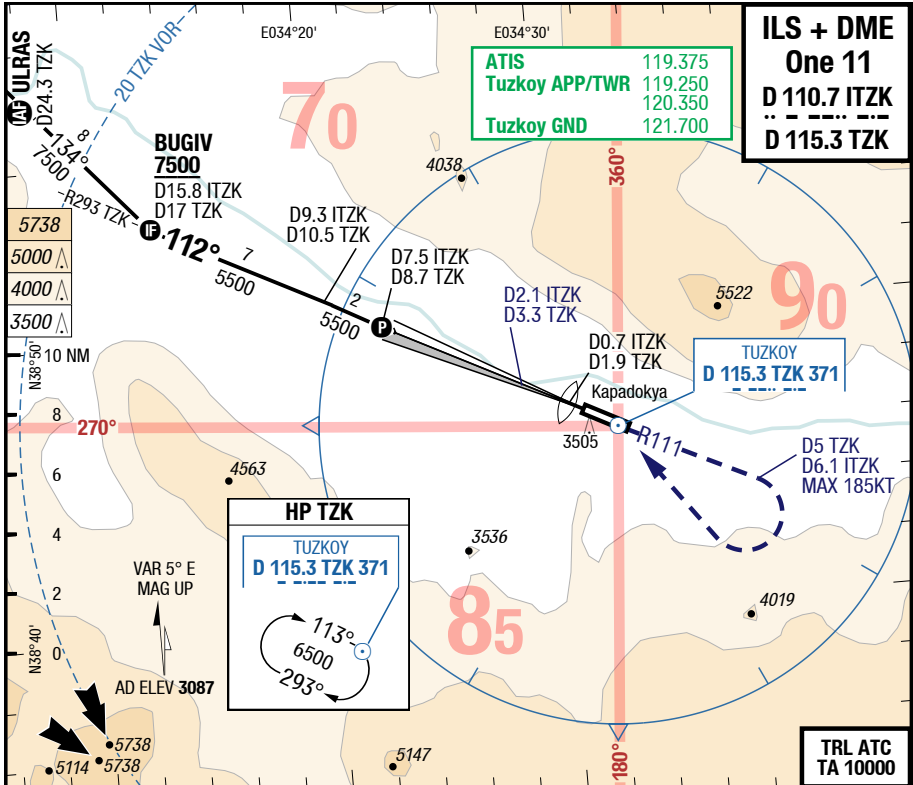
① MAX 205KT until inbound to TZK VOR.

Changes: AD Name

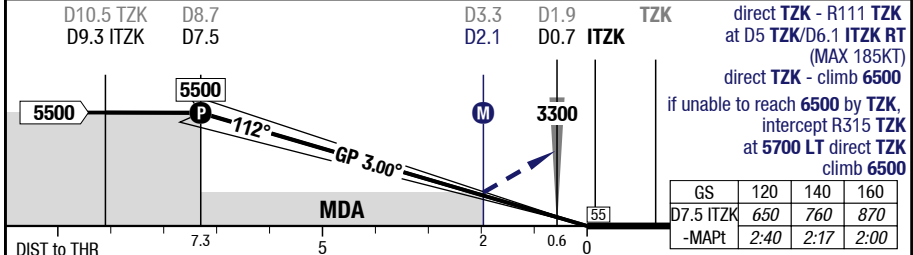
NAV-LTAZ

7-10

ILS + DME One 11



LOC 3.00°	7.5	7	6	5	4	3	<p>3.0° 3000 x 45 60 HL 15 HL 3.0° 3062 / 106hPa TDZ ---% +0.2%</p>
D ITZK 112°	5500	5390	5060	4730	4410	4080	
RWY 113°							HL-P2F



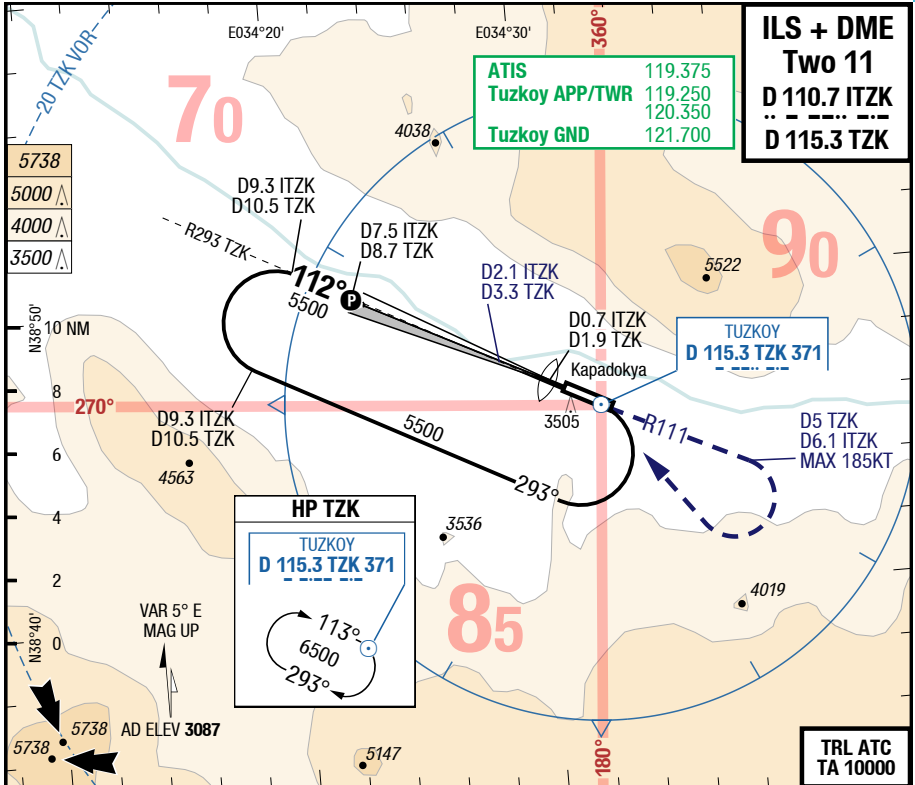
11	Cat 1 DME	LOC DME	Circling SW of AD only	
C	ft - m/km ft	240 - 550 3310	730 - 2.4 3800	1120 - 2.4V 4200
D	ft - m/km ft	240 - 550 3310	730 - 2.4 3800	1120 - 3.6V 4200

Changes: FREQ, AD Name

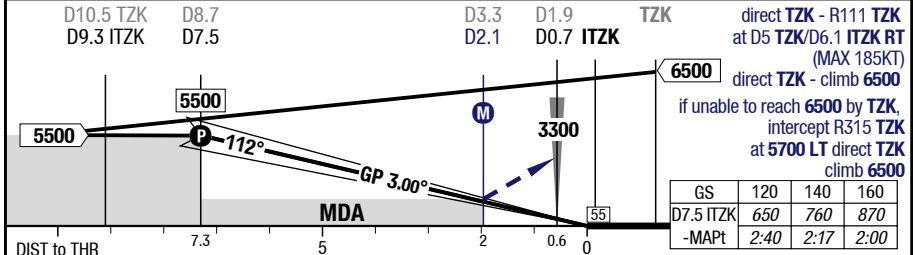
NAV-LTAZ

7-20

ILS + DME Two 11



LOC 3.00°	7.5	7	6	5	4	3	<p>11 3.0° 60 HL 3000 x 45 15 HL 3.0° TDZ ---% +0.2%</p>
D ITZK 112°	5500	5390	5060	4730	4410	4080	
RWY 113°							



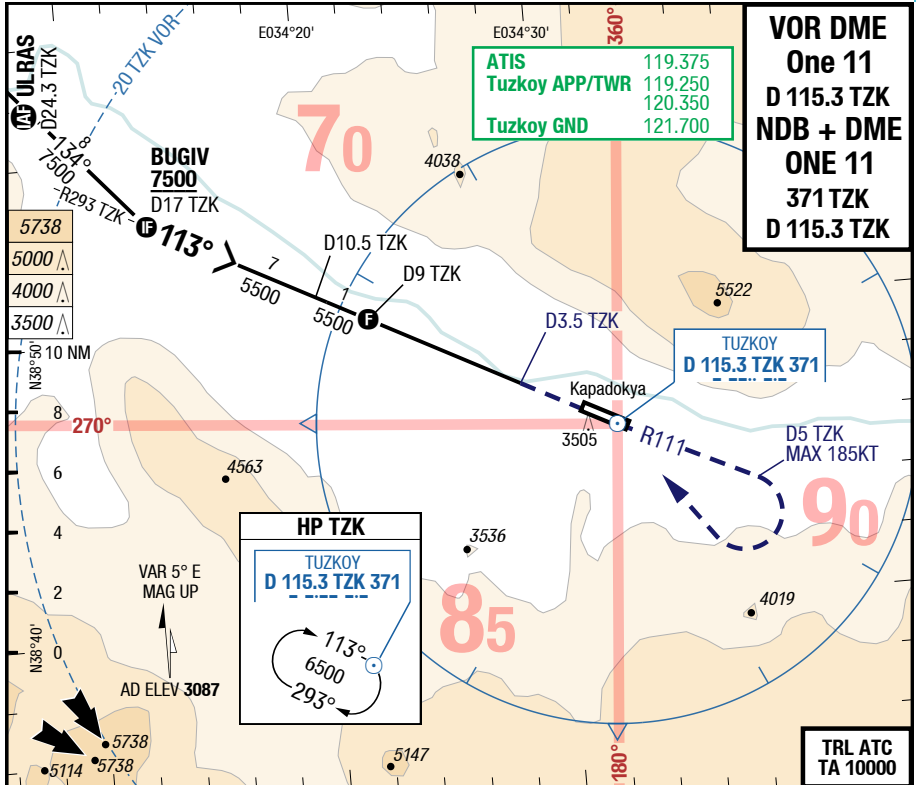
11		Cat 1 DME	LOC DME		Circling SW of AD only
C	ft - m/km ft	240 - 550 3310	730 - 2.4 3800		1120 - 2.4V 4200
D	ft - m/km ft	240 - 550 3310	730 - 2.4 3800		1120 - 3.6V 4200

Changes: FREQ, AD Name

NAV-LTAZ

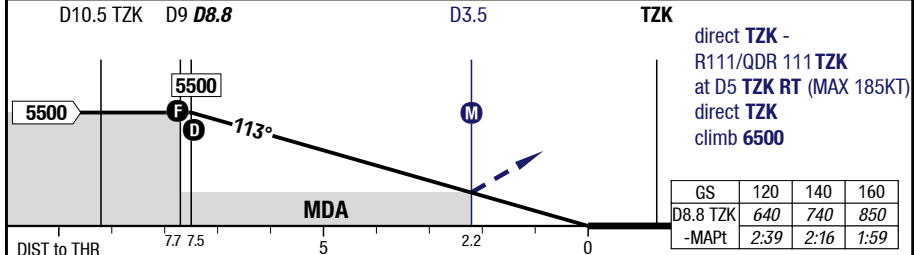
7-30

VOR DME One 11 / NDB + DME One 11



3.00°	8.8	8	7	6	5	4	
D TZK	5500	5250	4930	4610	4300	3980	

HL-P2F 3062 / 106hPa TDZ ---% +0.2%



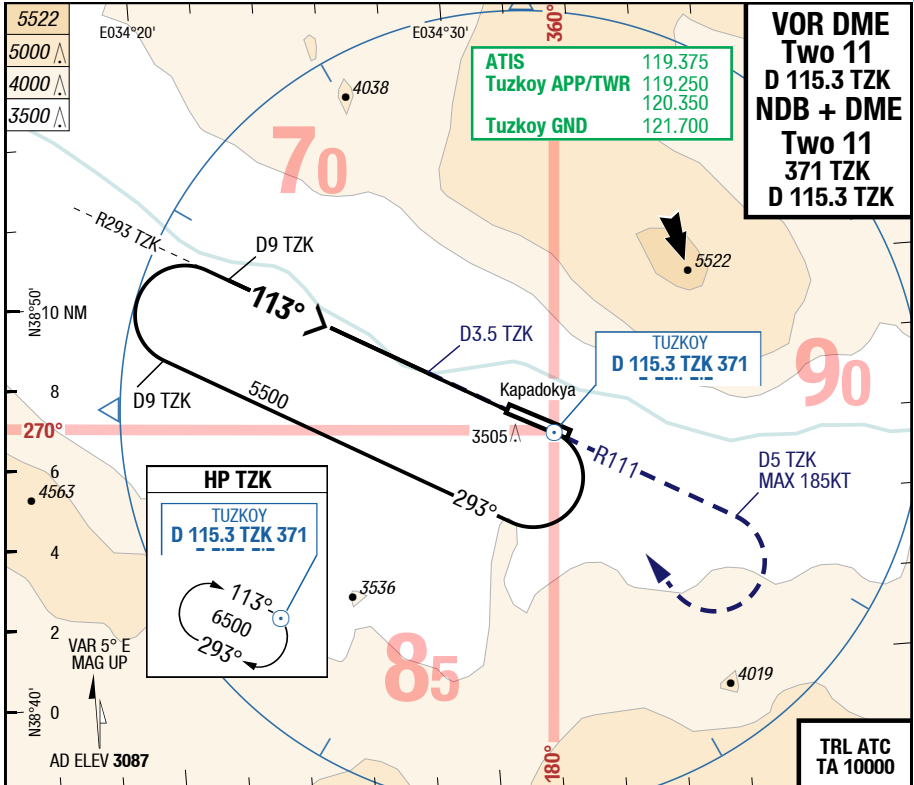
11		VOR DME	VOR DME	NDB DME	NDB DME	Circling SW of AD only		
	C	ft - m/km ft	730 - 2.9V 3800	730 - 3.6V 3800	730 - 2.9V 3800		730 - 3.6V 3800	1120 - 4.8V 4200
	D	ft - m/km ft	730 - 2.9V 3800	730 - 3.6V 3800	730 - 2.9V 3800		730 - 3.6V 3800	1120 - 4.8V 4200

Changes: FREQ, AD Name

NAV-LTAZ

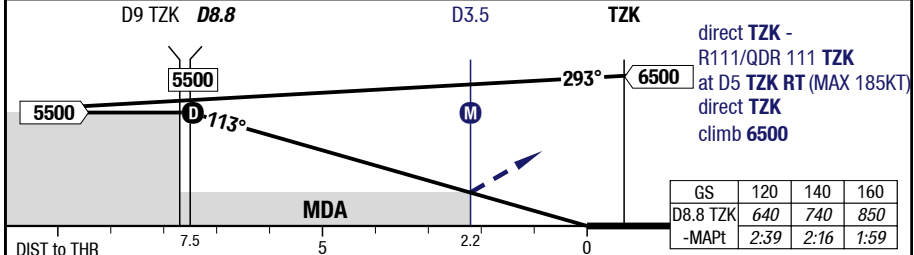
7-40

VOR DME Two 11 / NDB + DME Two 11



3.00° D TZK	8.8	8	7	6	5	4	
	5500	5250	4930	4610	4300	3980	

HL-P2F 3062 / 106hPa TDZ ---% +0.2%



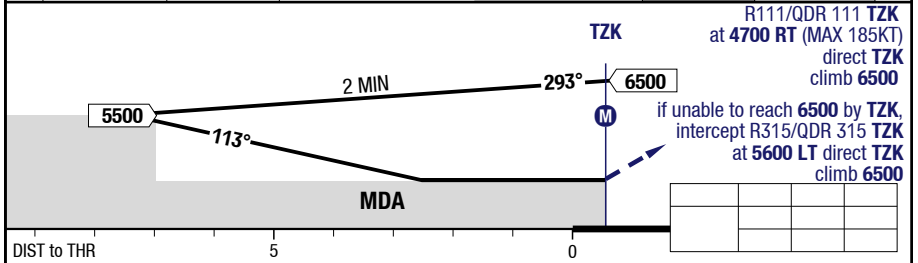
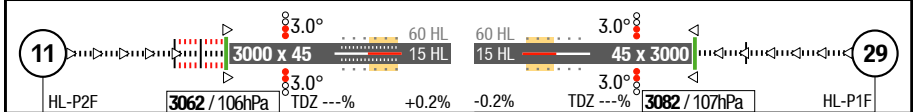
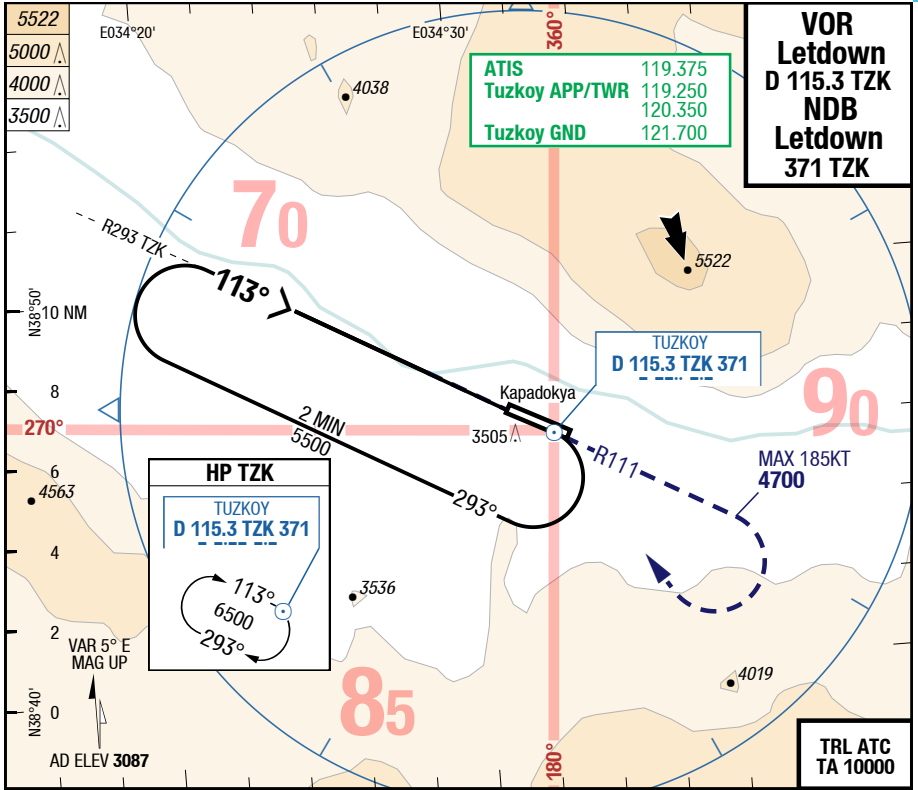
11	C	ft - m/km ft	VOR DME	VOR DME	NDB DME	NDB DME	Circling SW of AD only
			730 - 2.9V	730 - 3.6V	730 - 2.9V	730 - 3.6V	
			3800	3800	3800	3800	
D	ft - m/km ft	VOR DME	VOR DME	NDB DME	NDB DME	Circling SW of AD only	
		730 - 2.9V	730 - 3.6V	730 - 2.9V	730 - 3.6V		
		3800	3800	3800	3800		

Changes: FREQ, AD Name

NAV-LTAZ

7-50

VOR Letdown / NDB Letdown



11/29		Letdown NDB/VOR				Circling SW of AD only
C	ft - m/km ft	Straight-in Not authorized				1120 - 4.8V 4200
D	ft - m/km ft	Straight-in Not authorized				1120 - 4.8V 4200

Changes: FREQ, AD Name