

10-APR-2014

VAS-LTAR

1-10

A01**A01****GENERAL****ATS Hours**

| H24

Airport Information

RFF: CAT 8
PCN: RWY 01/19: 110/F/C/W/T
Customs: O/R

Operation**TWY Restriction:** TWY B width 12m / 39ft.**Warnings**

Birds in vicinity of AD.

ARRIVAL**Speed**

MAX IAS 250KT within TMA at or below FL100 (refer RFCs).

DEPARTURE**Take-off Minima**

RWY		01/19	
All ACFT	ft - m/km	0 - 500R/500V	-

Speed

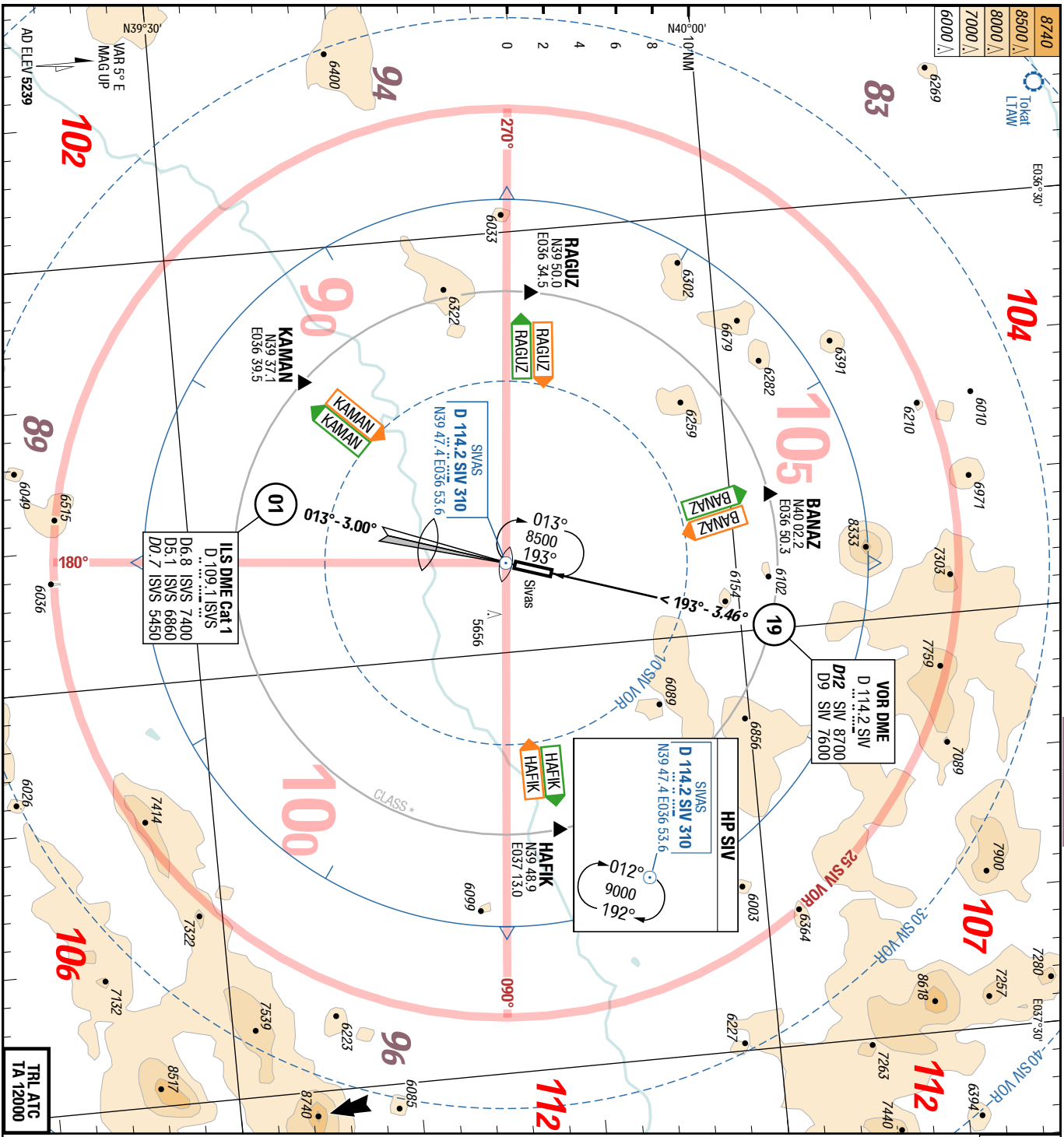
MAX IAS 250KT within TMA at or below FL100 (refer RFCs).

ATC Slot, Clearance**Start-up:** For start-up PROCs see CRAR Turkey.**De-icing**

| AVBL.

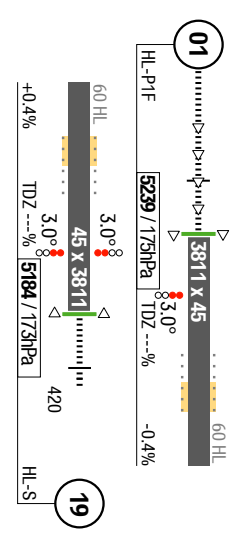
Changes: Editorial

2-10



APP	118.150	118.800
TWR	118.150	118.800
GND	121.900	

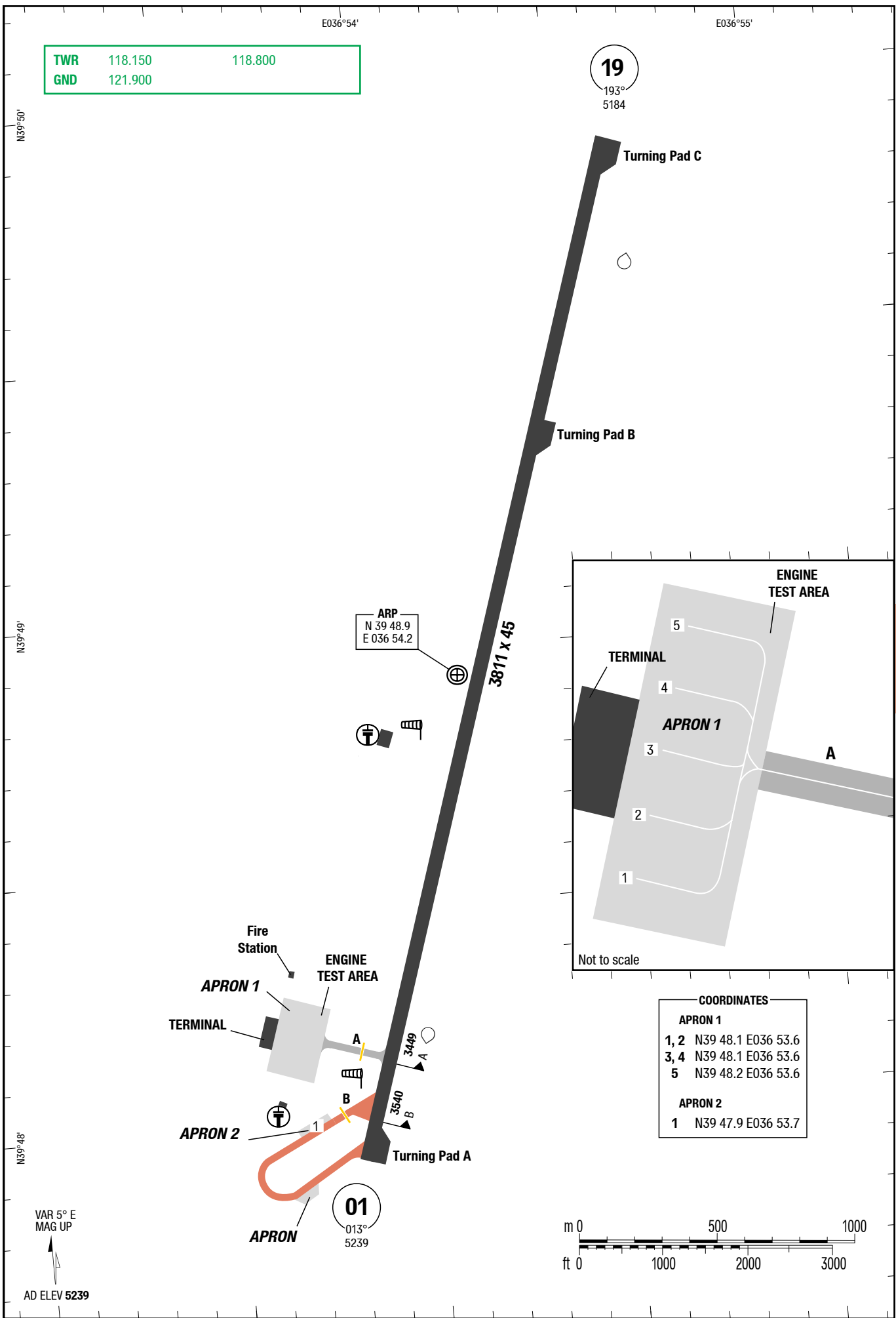
Landing RWY system:



Changes: Nil

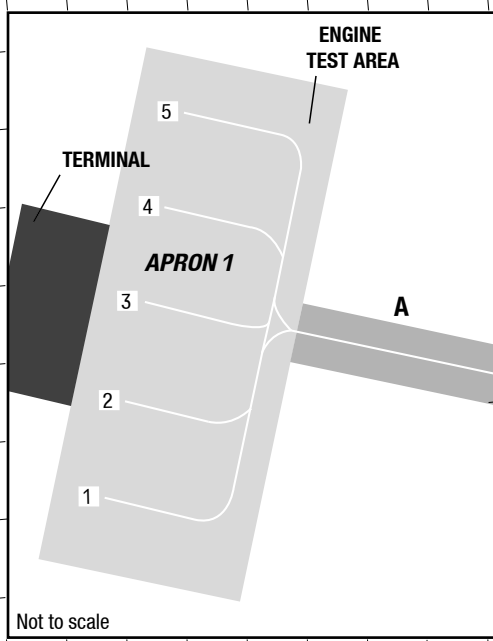
THIS CHART IS A PART OF NAVIGRAPH CHARTS AND IS INTENDED FOR FLIGHT SIMULATION USE ONLY

Changes: WDI, TWR, TKOE INT



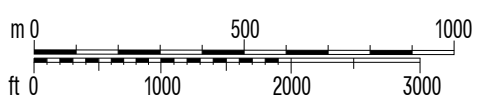
TWR	118.150	118.800
GND	121.900	

ARP
N 39 48.9
E 036 54.2



COORDINATES

APRON 1		
1, 2	N39 48.1	E036 53.6
3, 4	N39 48.1	E036 53.6
5	N39 48.2	E036 53.6
APRON 2		
1	N39 47.9	E036 53.7



THIS CHART IS A PART OF NAVIGRAPH CHARTS AND IS INTENDED FOR FLIGHT SIMULATION USE ONLY

Effective 03-APR-2014

27-MAR-2014

VAS-LTAR

Turkey Sivas Nuri Demirag

NIL
SIDs

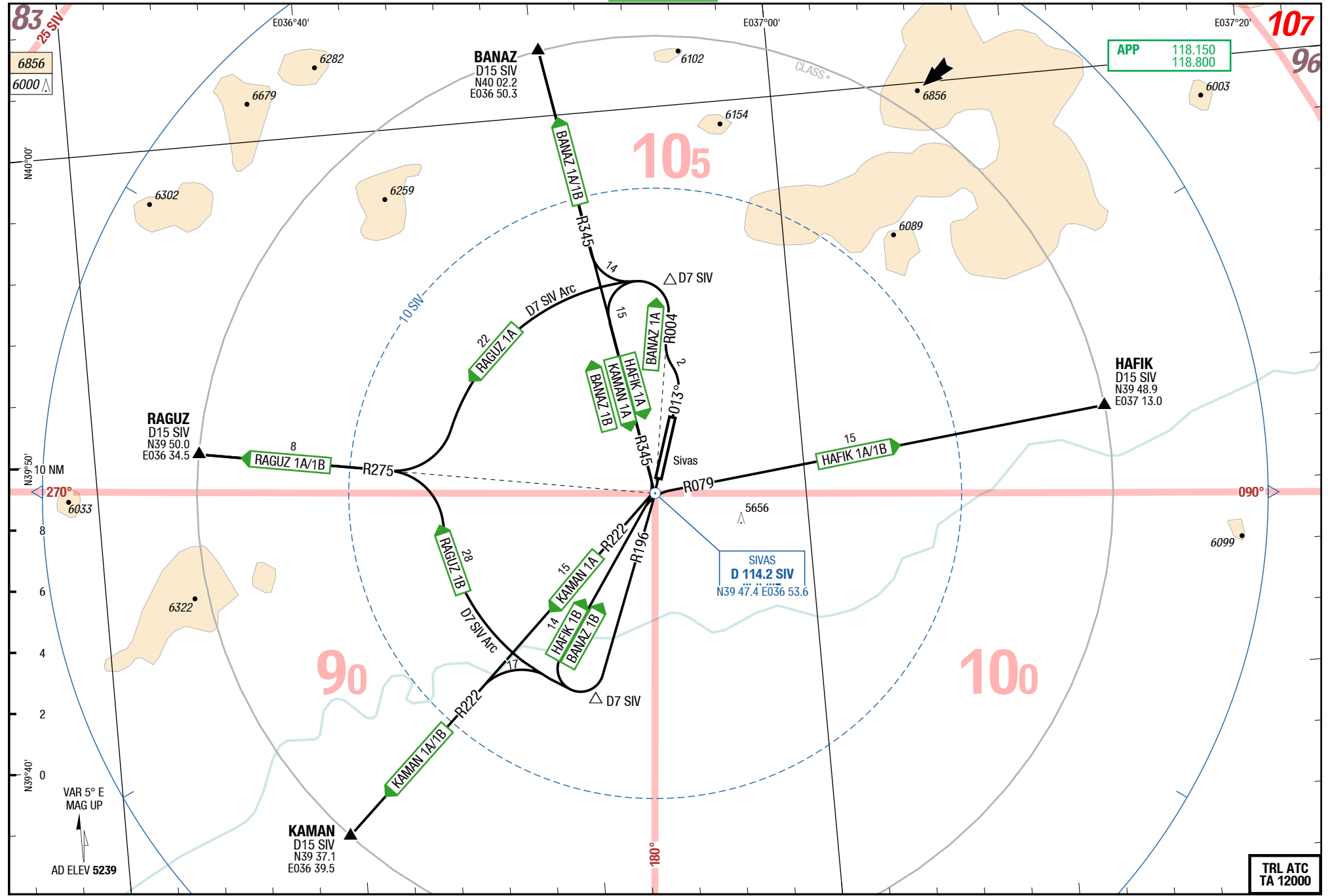
SID

SID

Nuri Demirag Sivas Turkey

NIL
SIDs

4-10



Changes: FREQ, TOPO, AD ELEV

THIS CHART IS A PART OF NAVIGRAPH CHARTS AND IS INTENDED FOR FLIGHT SIMULATION USE ONLY

TRL ATC
TA 12000

© Lido 2014

BANAZ 1A / HAFIK 1A / KAMAN 1A / RAGUZ 1A / BANAZ 1B / HAFIK 1B / KAMAN 1B / RAGUZ 1B

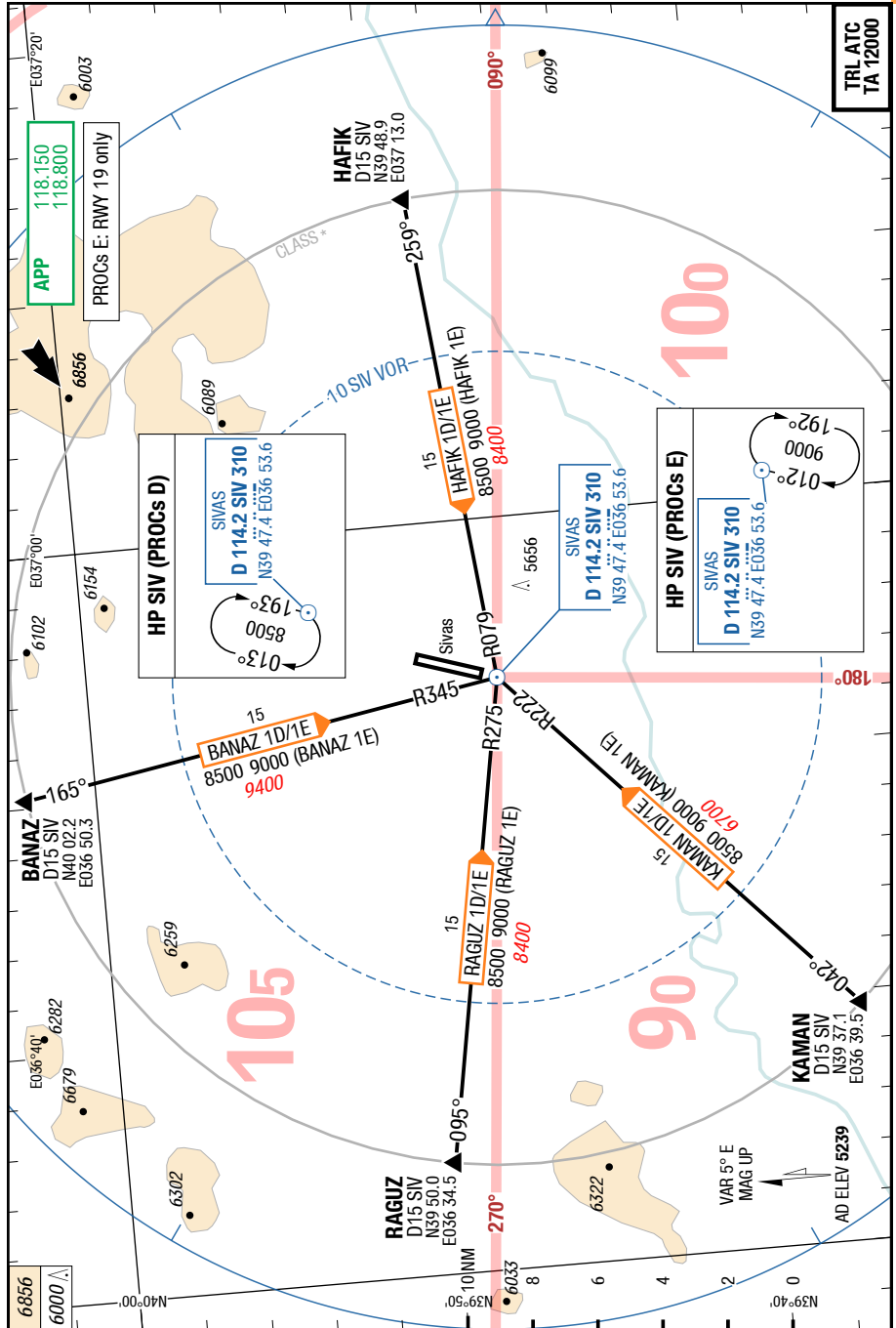
RWYs 01 (013°) / 19 (193°)

DESIGNATOR	ROUTING	ALTITUDES
	Runway 01	
BANAZ 1A 118.150	intercept R004 SIV - at D7 SIV LT follow D7 SIV arc - intercept R345 SIV to BANAZ	
HAFIK 1A 118.150	intercept R004 SIV - at D7 SIV LT direct SIV - R079 SIV to HAFIK	
KAMAN 1A 118.150	intercept R004 SIV - at D7 SIV LT direct SIV - R222 SIV to KAMAN	
RAGUZ 1A 118.150	intercept R004 SIV - at D7 SIV LT follow D7 SIV arc - intercept R275 SIV to RAGUZ	
	Runway 19	
BANAZ 1B 118.150	intercept R196 SIV - at D7 SIV RT direct SIV - R345 SIV to BANAZ	
HAFIK 1B 118.150	intercept R196 SIV - at D7 SIV RT direct SIV - R079 SIV to HAFIK	
KAMAN 1B 118.150	intercept R196 SIV - at D7 SIV RT follow D7 SIV arc - intercept R222 SIV to KAMAN	
RAGUZ 1B 118.150	intercept R196 SIV - at D7 SIV RT follow D7 SIV arc - intercept R275 SIV to RAGUZ	

VAS-LTAR

6-10

STARs



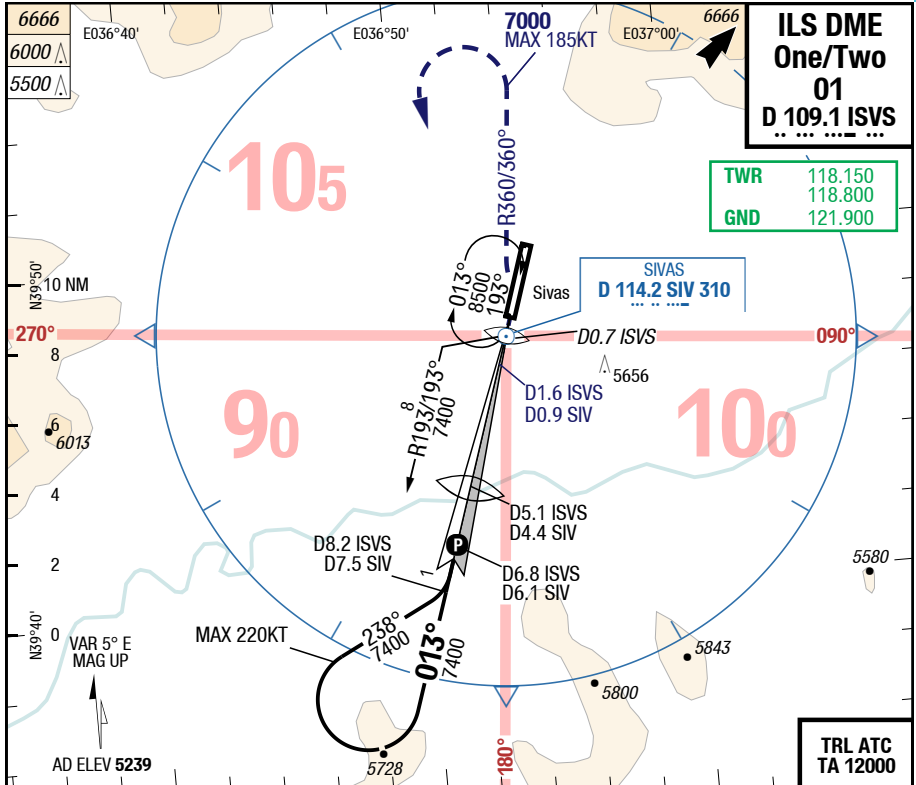
Changes: PROC, HLDG

THIS CHART IS A PART OF NAVIGRAPH CHARTS AND IS INTENDED FOR FLIGHT SIMULATION USE ONLY

VAS-LTAR

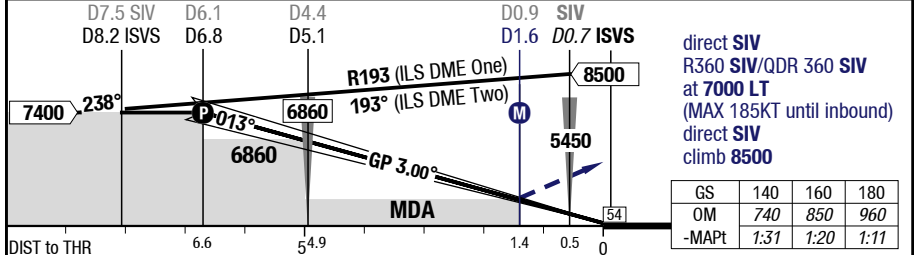
7-10

ILS DME One/Two 01



LOC 3.00°	6.8	6	5	4	3	2		3811 x 45 60 HL
D ISVS	7400	7150	6830	6510	6190	5870		

HL-P1F 5239 / 175hPa TDZ ---% -0.4%



01	Cat 1 DME 1) 2)	LOC DME		Circling
C	ft - m/km ft 270 - 600 5500	500 - 1.5 5730		770 - 2.4V 6000
D	ft - m/km ft 270 - 600 5500	500 - 1.5 5730		1170 - 3.6V 6400

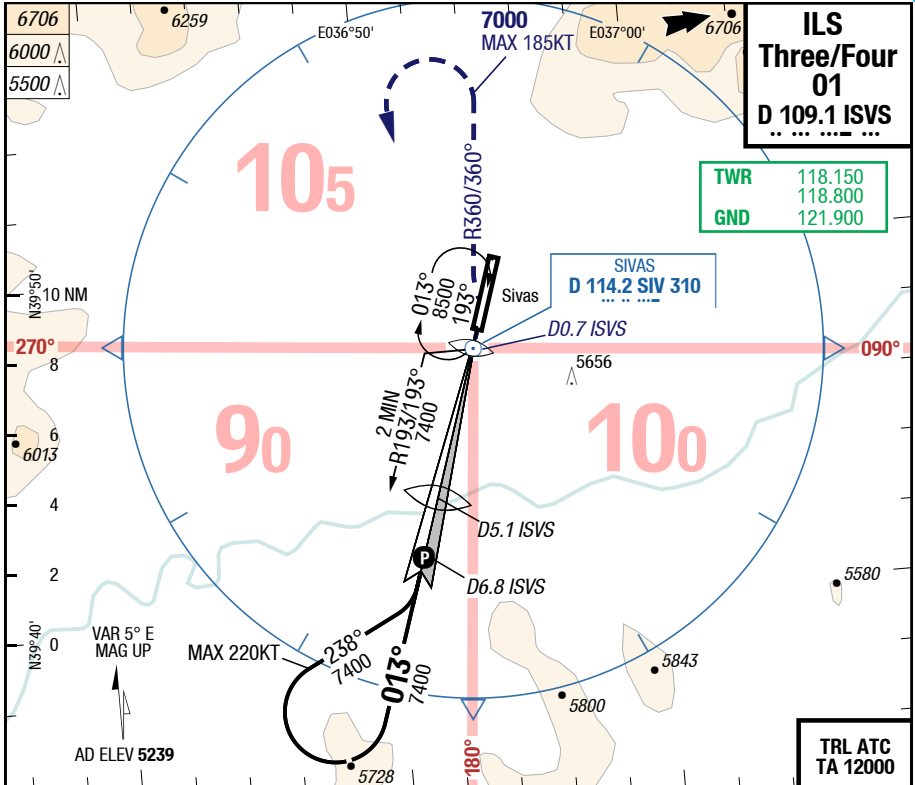
1) FD, AP or HGS required, else RVR 750m
2) With EVS 550m, wo EVS use STD

Changes: THR ELEV, TOPO, AD ELEV

VAS-LTAR

7-20

ILS Three/Four 01



ILS Three/Four 01	
D 109.1 ISVS	
TWR	118.150
	118.800
GND	121.900

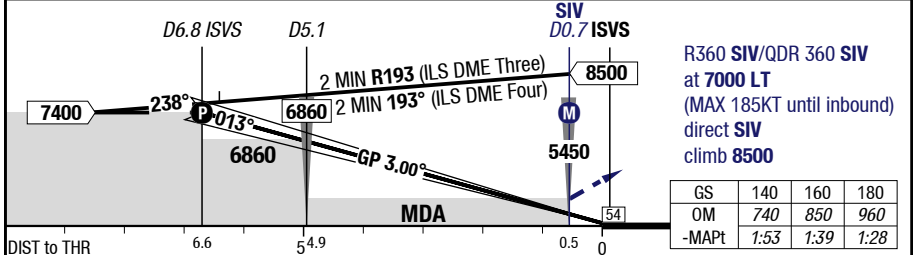
LOC 3.00°	6.8	6	5	4	3	2
D ISVS	7400	7150	6830	6510	6190	5870

01

HL-P1F 5239 / 175hPa TDZ ---% -0.4%

3811 x 45 60 HL

3.0°



R360 SIV/QDR 360 SIV at 7000 LT (MAX 185KT until inbound) direct SIV climb 8500

GS	140	160	180
OM	740	850	960
-MAPt	1:53	1:39	1:28

01	Cat 1 1) 2)	LOC		Circling
C	ft - m/km ft	270 - 600 5500	500 - 1.5 5730	770 - 2.4V 6000
D	ft - m/km ft	270 - 600 5500	500 - 1.5 5730	1170 - 3.6V 6400

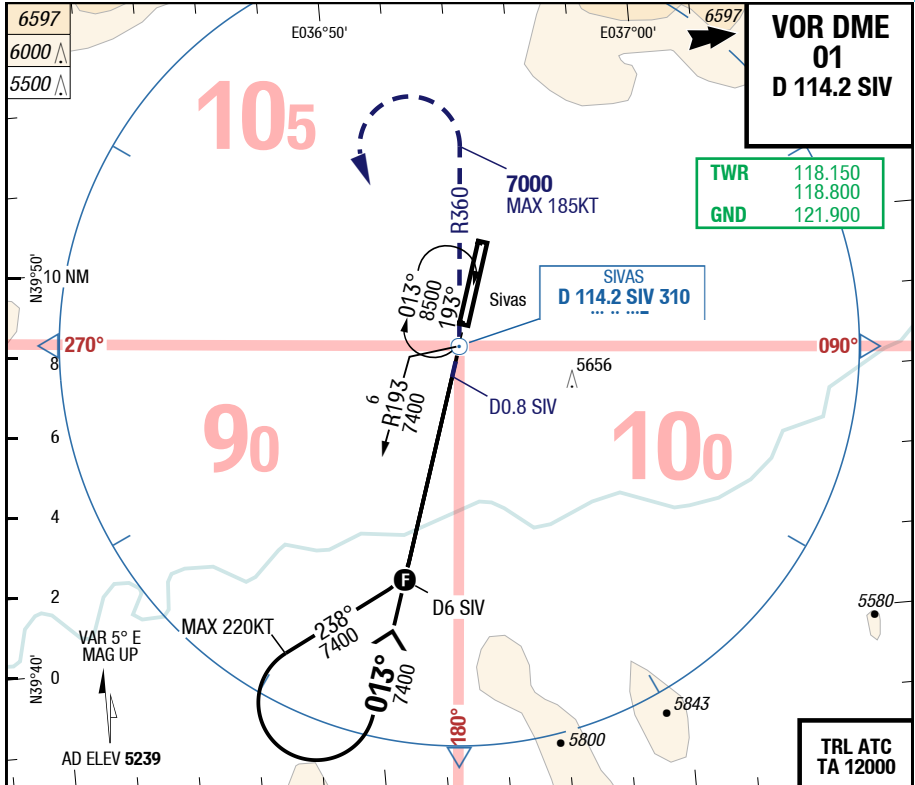
1) FD, AP or HGS required, else RVR 750m
2) With EVS 550m, wo EVS use STD

Changes: THR ELEV, TOPO, AD ELEV

VAS-LTAR

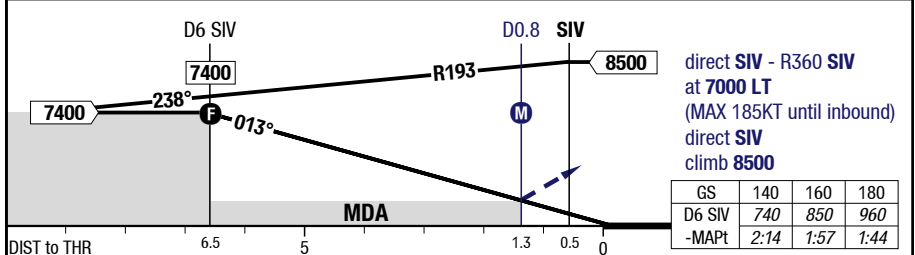
7-30

VOR DME 01



3.00°	6	5	4	3	2	1	
D SIV	7400	7080	6750	6430	6110	5780	

HL-P1F 5239 / 175hPa TDZ ---% -0.4%



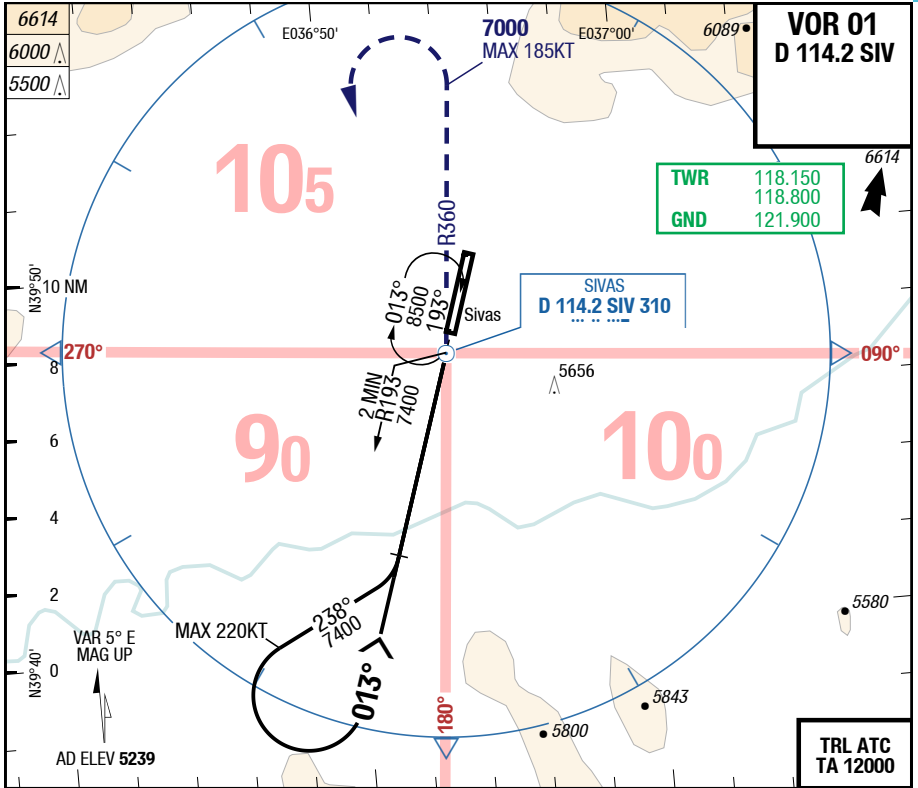
01	VOR DME	VOR DME APL U/S		Circling
C	ft - m/km ft	500 - 1.8V 5730	500 - 2.5V 5730	770 - 3.6V 6000
D	ft - m/km ft	500 - 1.8V 5730	500 - 2.5V 5730	1170 - 5.0V 6400

Changes: THR ELEV, TOPO, AD ELEV

VAS-LTAR

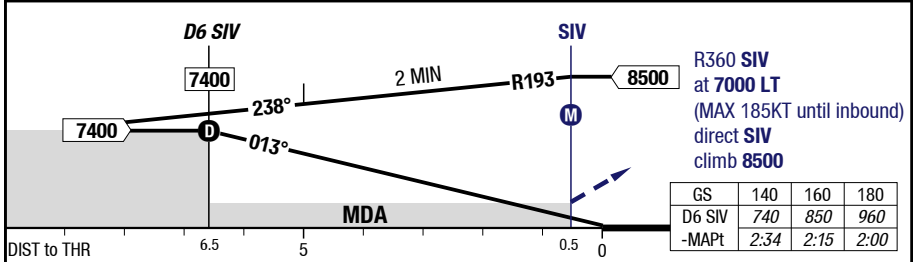
7-40

VOR 01



3.00° D SIV	6	5	4	3	2	1	
	7400	7080	6750	6430	6110	5780	

HL-P1F 5239 / 175hPa TDZ ---% -0.4%



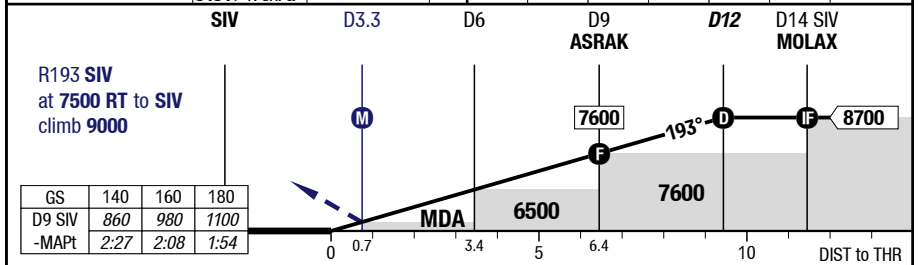
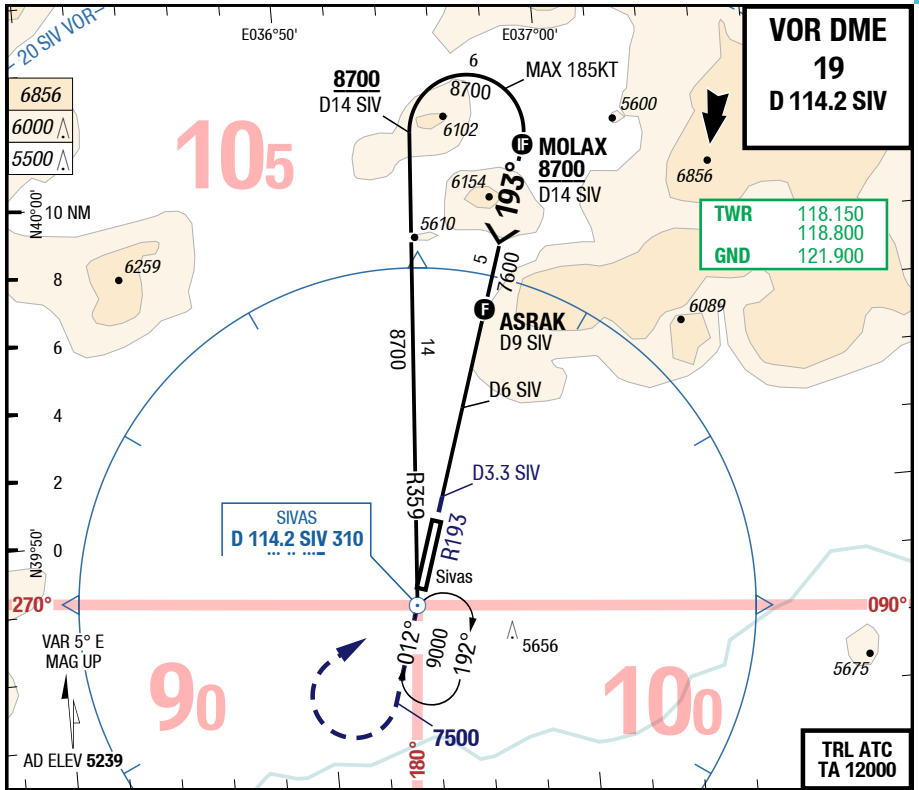
01	C	ft - m/km ft	VOR	VOR	Circling
				APL U/S	
			540 - 2.0V 5770	540 - 2.7V 5770	
01	D	ft - m/km ft	VOR	VOR	Circling
				APL U/S	
			540 - 2.0V 5770	540 - 2.7V 5770	
					770 - 3.6V 6000
					1170 - 5.0V 6400

Changes: THR ELEV, AD ELEV, TOPO

VAS-LTAR

7-50

VOR DME 19

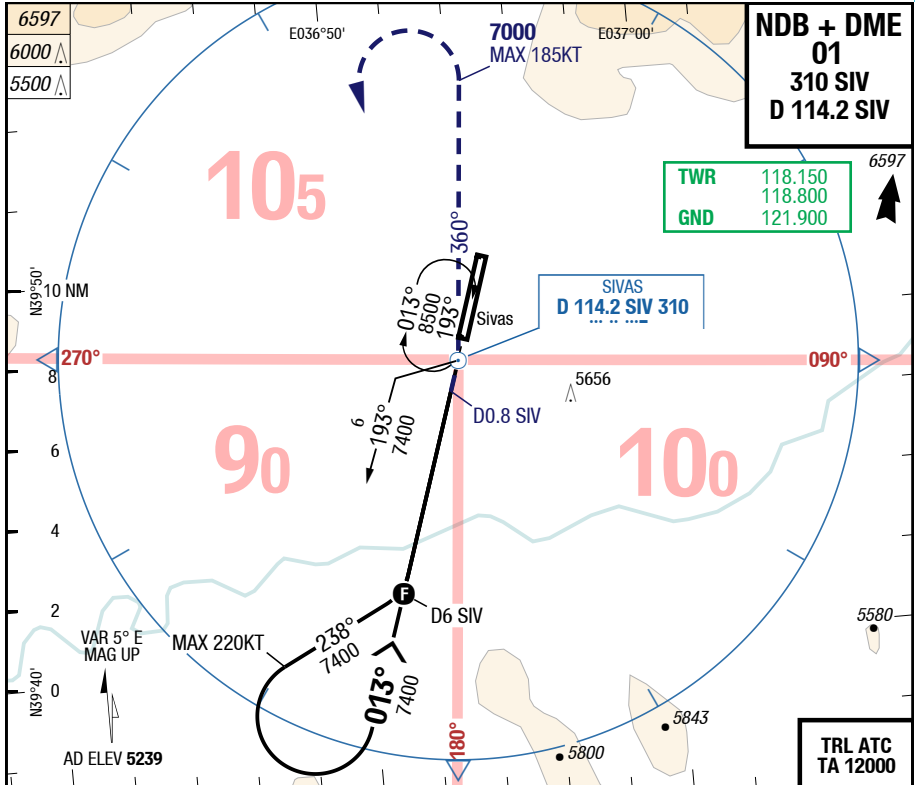


Changes: WPT MOLAX

VAS-LTAR

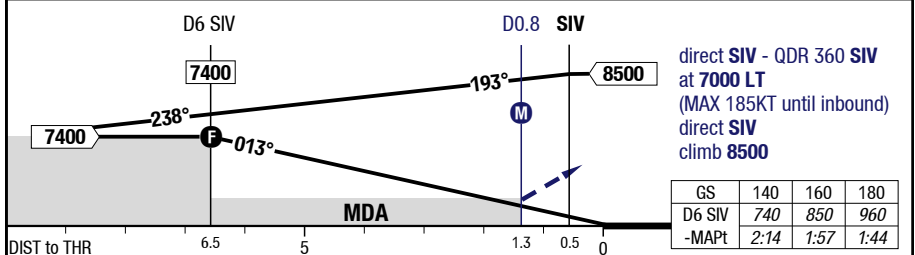
7-60

NDB + DME 01



3.00° D SIV	6	5	4	3	2	1	
	7400	7080	6750	6430	6110	5780	

HL-P1F 5239 / 175hPa TDZ ---% -0.4%



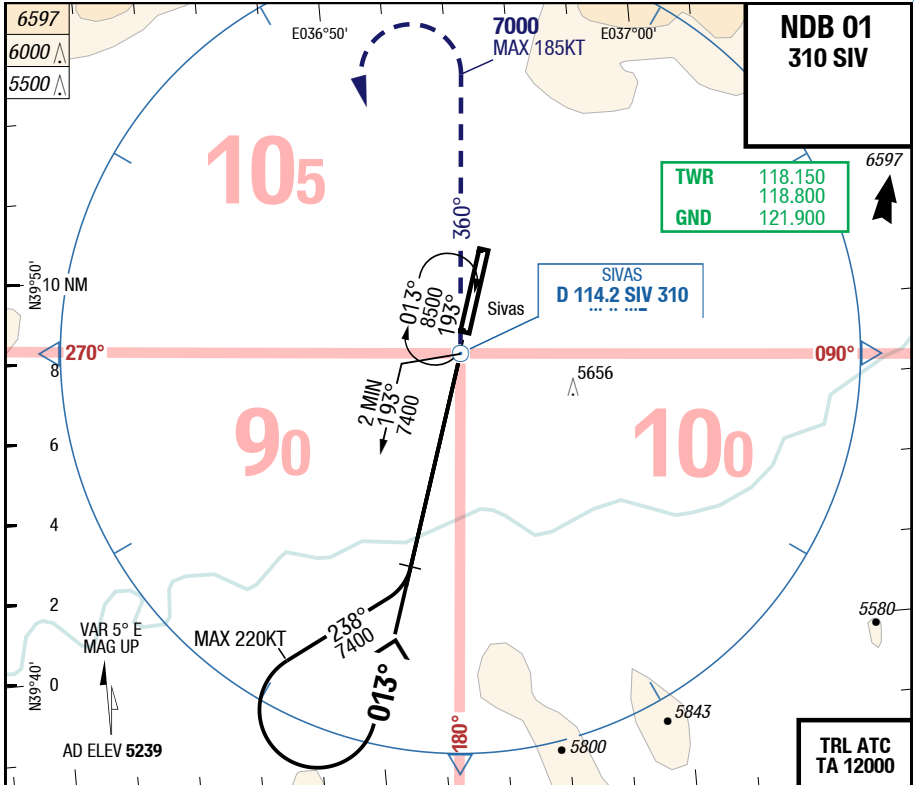
01		NDB DME SIV	NDB DME SIV APL U/S	Circling	
C	ft - m/km ft	500 - 1.8V 5730	500 - 2.5V 5730	770 - 3.6V 6000	
D	ft - m/km ft	500 - 1.8V 5730	500 - 2.5V 5730	1170 - 5.0V 6400	

Changes: Nil

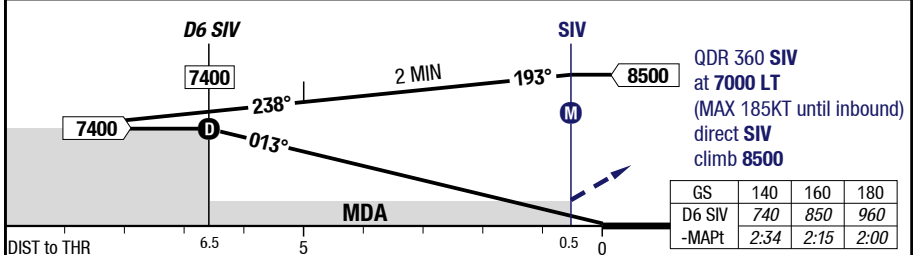
VAS-LTAR

7-70

NDB 01



3.00° D SIV	6	5	4	3	2	1	
	7400	7080	6750	6430	6110	5780	



01	NDB	NDB APL U/S		Circling
C	ft - m/km ft	540 - 2.0V 5770	540 - 2.7V 5770	770 - 3.6V 6000
D	ft - m/km ft	540 - 2.0V 5770	540 - 2.7V 5770	1170 - 5.0V 6400

Changes: Nil