

GENERAL

ATS Hours

H24

Airport Information

RFF: CAT 9; no RWY foaming AVBL
PCN: RWY 05/23: 115/F/A/X/T

Operation

LIMITATIONS ON USE OF AERODROME

AD AVBL to:

- Regular or alternate use of international traffic.
- All domestic traffic for regular or alternate use.

TWY Restriction

TWY A, B, C, D, D1, D2 width 18m / 59ft.

TWY B1 width 9m / 30ft

TWY E width 8m / 26ft.

ARRIVAL

Speed

MAX IAS 250KT within TMA at or below FL100 (refer to RFCs).

DEPARTURE

Take-off Minima

RWY		05/23	
All ACFT	ft - m/km	0 - 400V	-

Speed

MAX IAS 250KT within TMA at or below FL100 (refer to RFCs).

ATC Slot, Clearance

For start-up PROC see CRAR Turkey.

Effective 05-JAN-2017

29-DEC-2016

ADA-LTAF

2-10

Turkey Adana

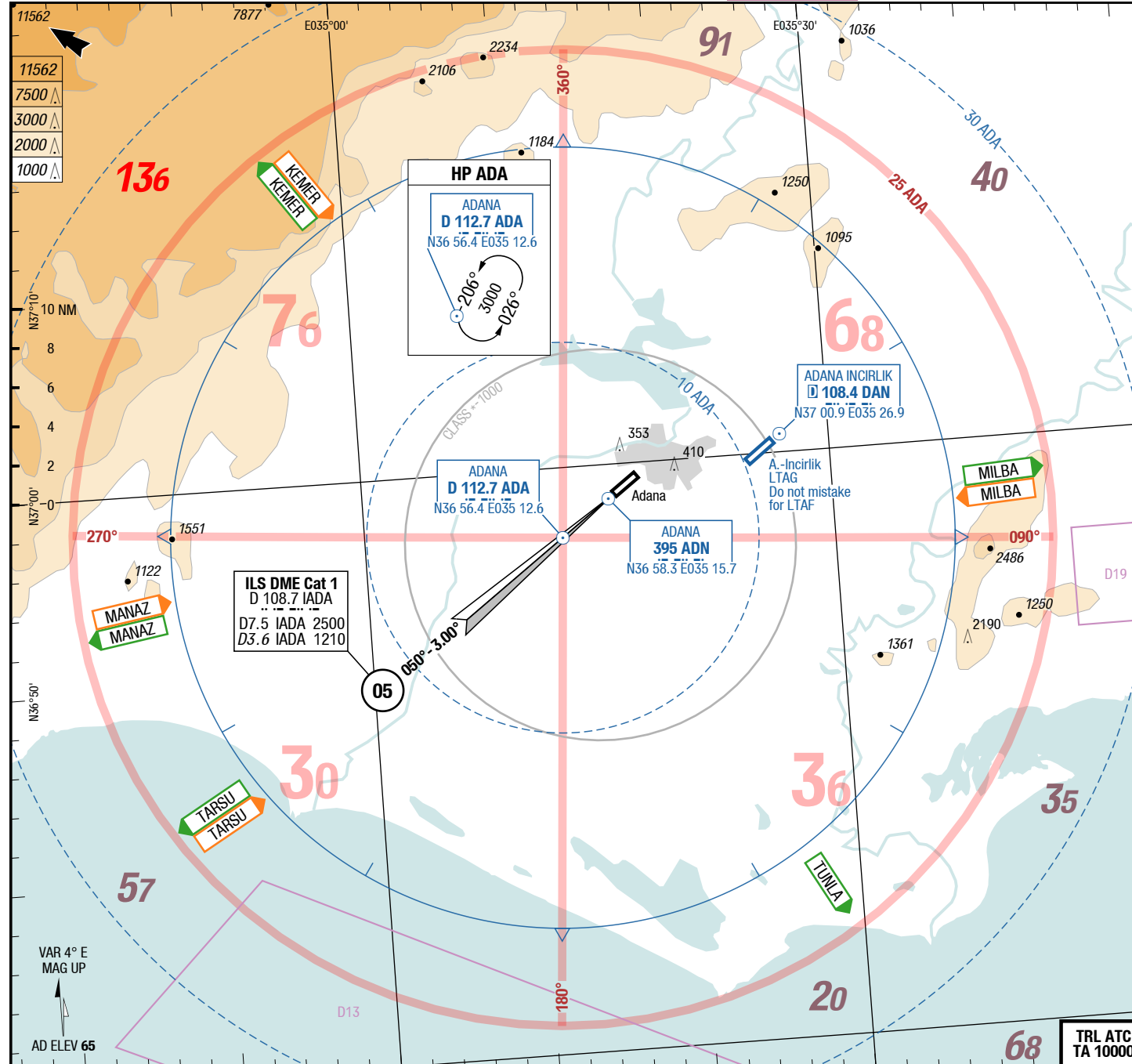
AGC
AFC

AFC

AFC

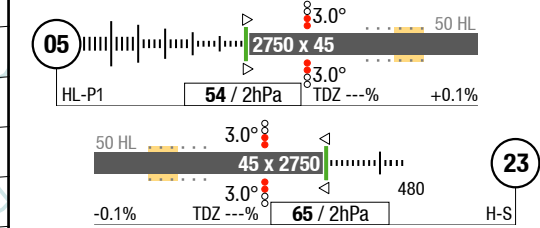
Adana Turkey

AGC
AFC



ATIS	119.225 AWOS 3
Incirlik APP	126.500
	118.000
TWR	121.100
	131.100
GND	121.900

Landing RWY system:



Changes: Nil

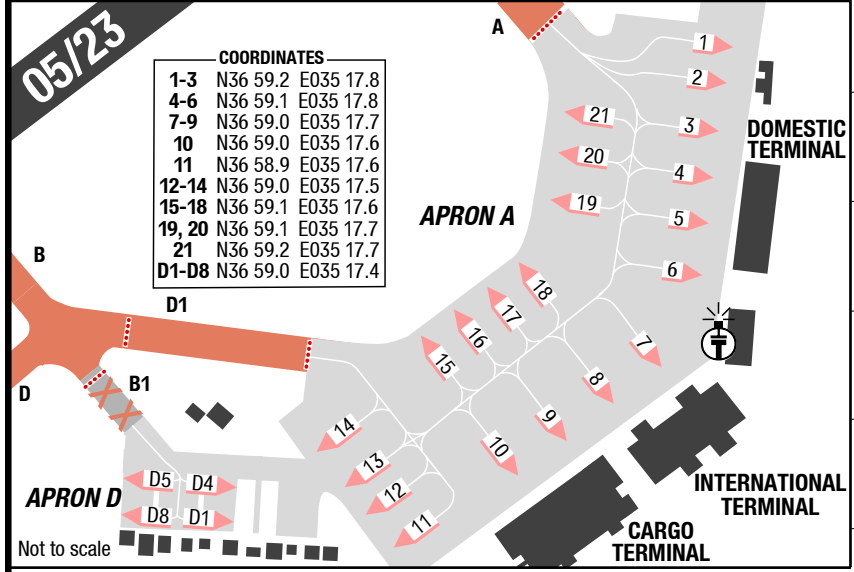
THIS CHART IS A PART OF NAVIGRAPH CHARTS AND IS INTENDED FOR FLIGHT SIMULATION USE ONLY

ATIS	119.225	AWOS 3
TWR	121.100	131.100
GND	121.900	

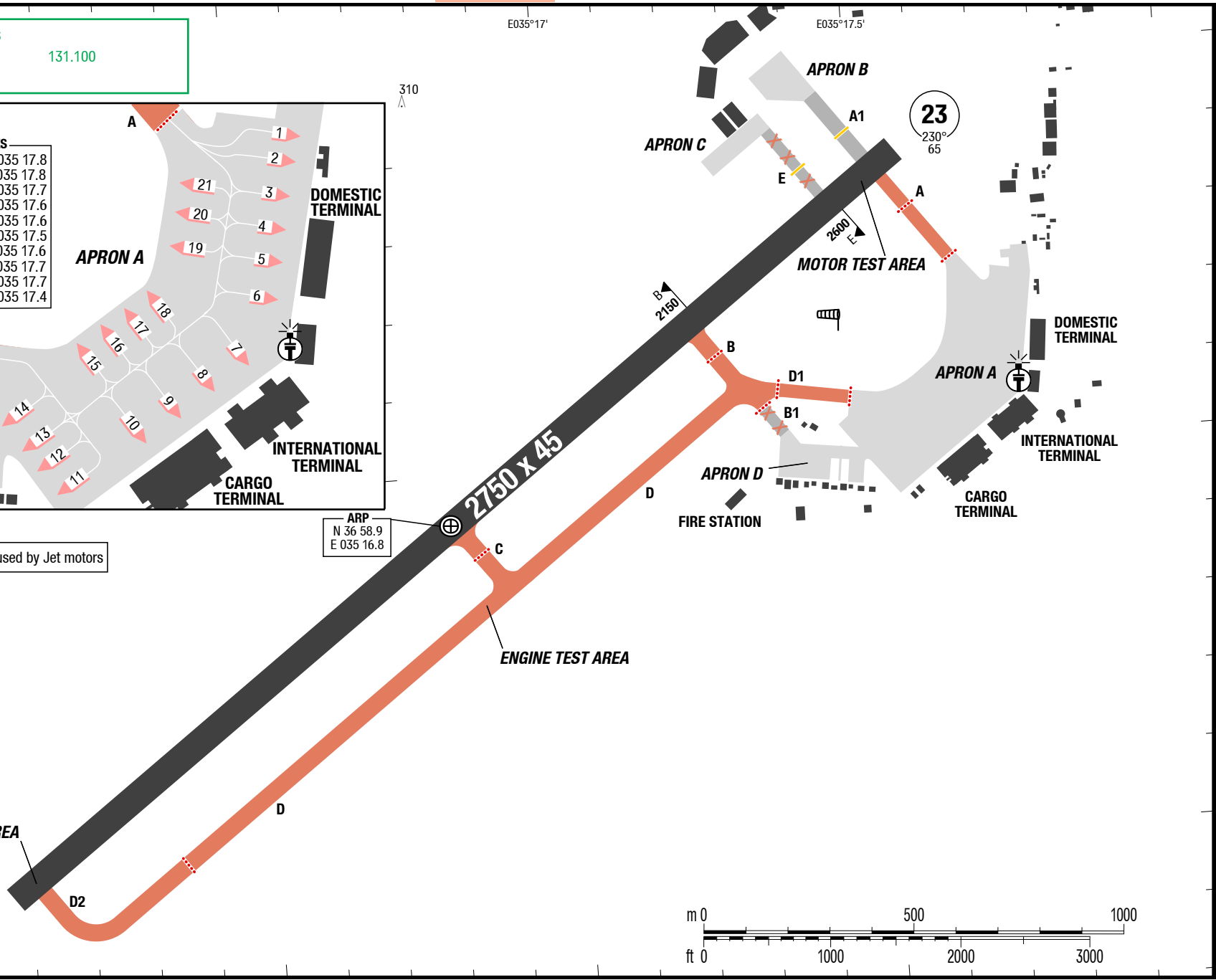
05/23

COORDINATES

1-3	N36 59.2	E035 17.8
4-6	N36 59.1	E035 17.8
7-9	N36 59.0	E035 17.7
10	N36 59.0	E035 17.6
11	N36 58.9	E035 17.6
12-14	N36 59.0	E035 17.5
15-18	N36 59.1	E035 17.6
19, 20	N36 59.1	E035 17.7
21	N36 59.2	E035 17.7
D1-D8	N36 59.0	E035 17.4



ARP
N 36 58.9
E 035 16.8



Changes: Parking Stands D1-D8

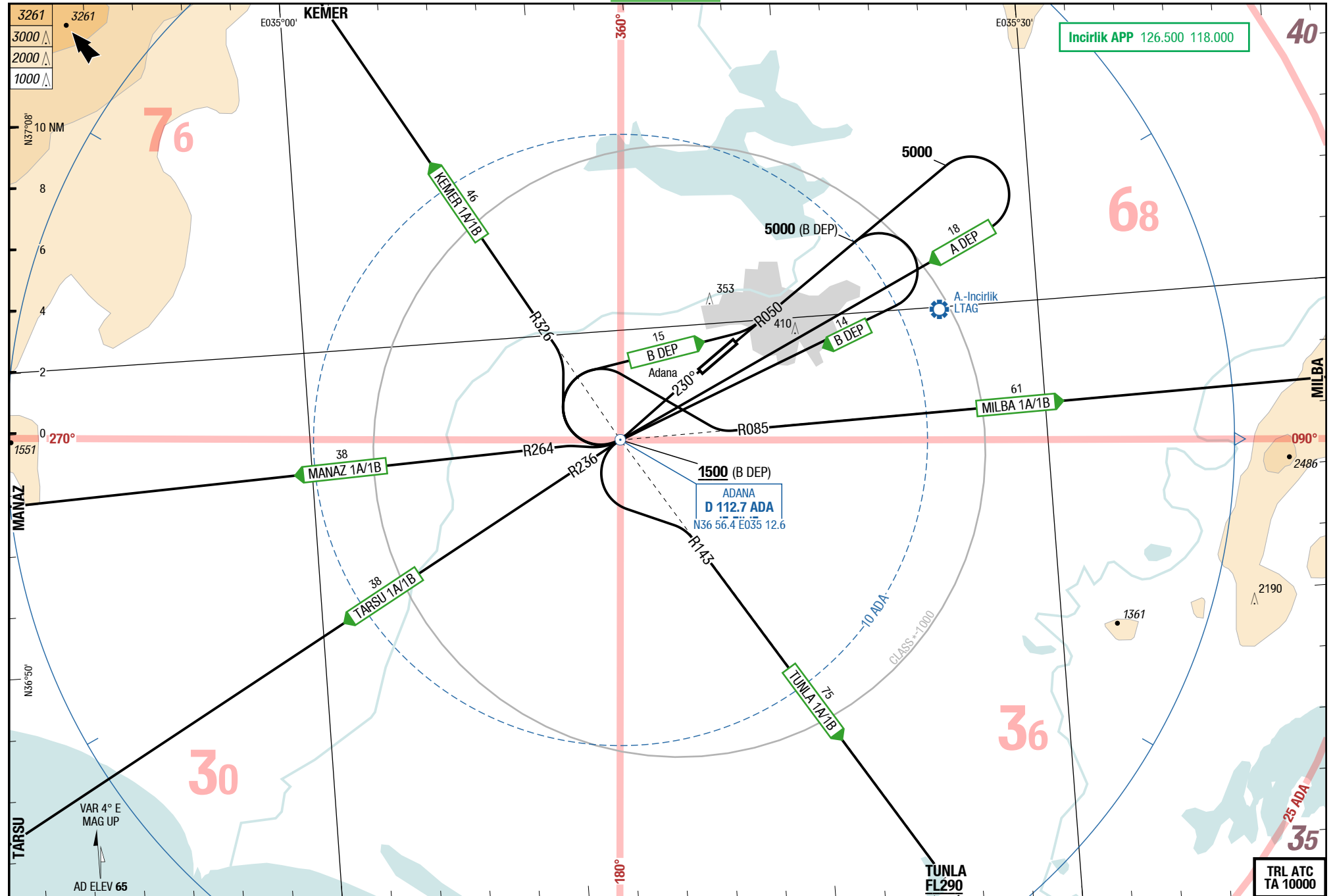
THIS CHART IS A PART OF NAVIGRAPH CHARTS AND IS INTENDED FOR FLIGHT SIMULATION USE ONLY

03-DEC-2015
ADA-LTAF

Turkey Adana
NIL
SIDs

SID SID

Adana Turkey
NIL
SIDs



Changes: OBST

THIS CHART IS A PART OF NAVIGRAPH CHARTS AND IS INTENDED FOR FLIGHT SIMULATION USE ONLY

© Lido 2015

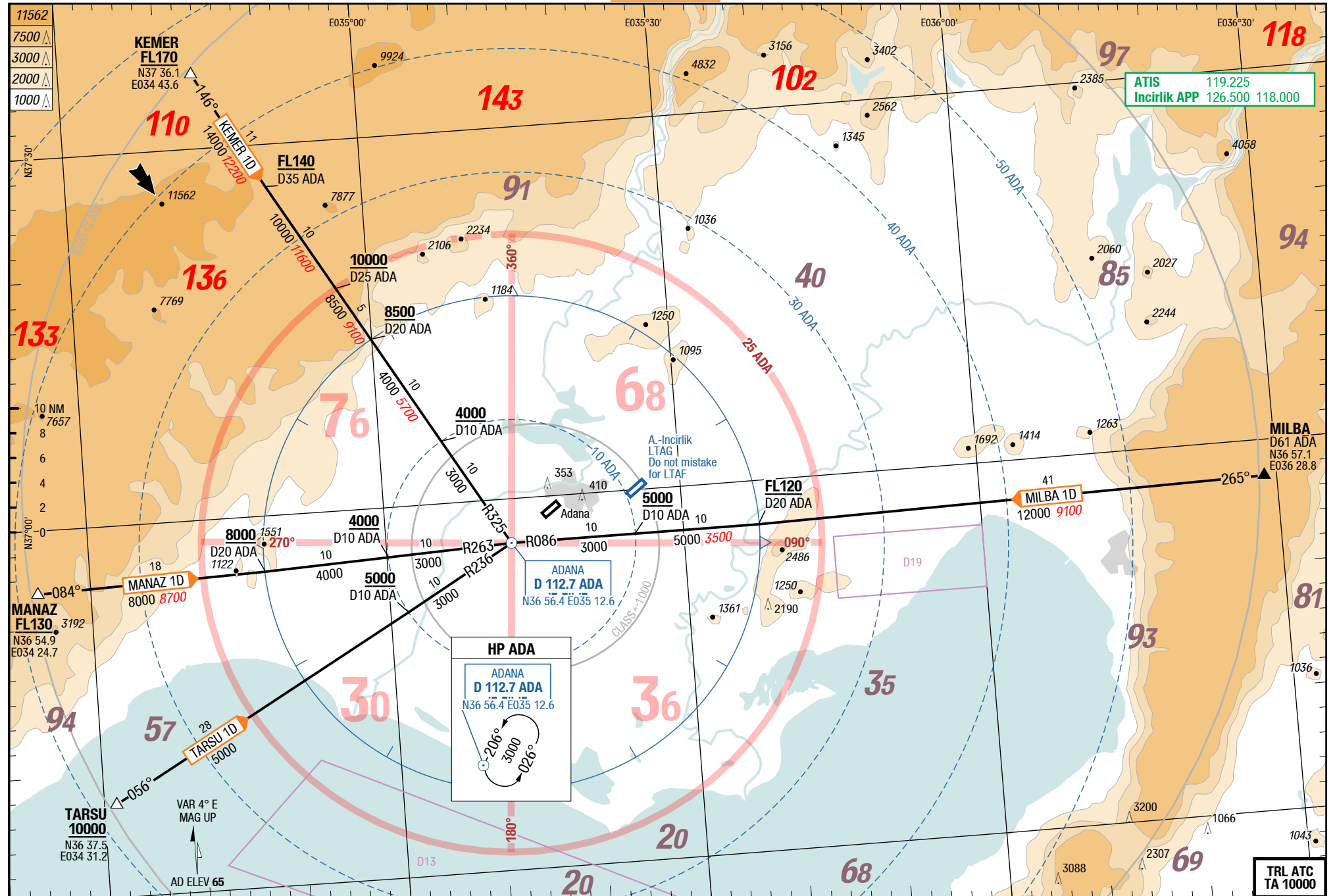
KEMER 1A / MANAZ 1A / MILBA 1A / TARSU 1A / TUNLA 1A / KEMER 1B / MANAZ 1B / MILBA 1B / TARSU 1B / TUNLA 1B

RWYs 05 (050°) / 23 (230°)

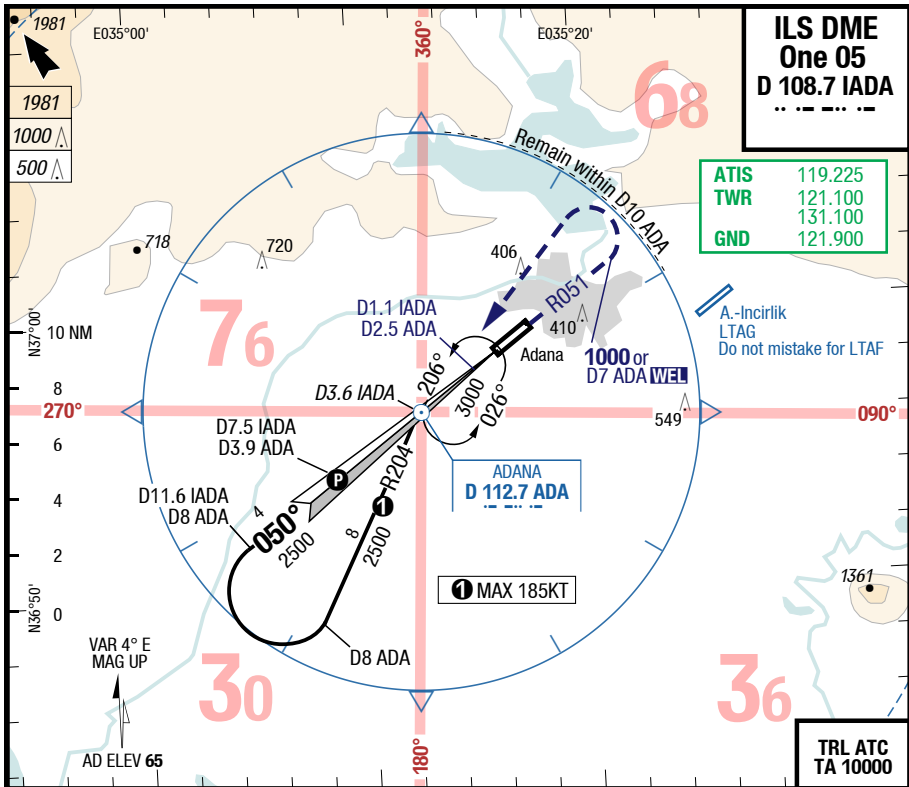
	GS	120	150	180	210	240	270
4.2%	ft/MIN	600	700	800	900	1100	1200

DESIGNATOR	ROUTING	ALTITUDES
	Runway 05	
KEMER 1A 4.2% 126.500	R050 ADA - MNM 5000 RT direct ADA - RT intercept R326 ADA to KEMER	
MANAZ 1A 4.2% 126.500	R050 ADA - MNM 5000 RT direct ADA - R264 ADA to MANAZ	
MILBA 1A 4.2% 126.500	R050 ADA - MNM 5000 RT direct ADA - RT intercept R085 ADA to MILBA	
TARSU 1A 4.2% 126.500	R050 ADA - MNM 5000 RT direct ADA - LT intercept R236 ADA to TARSU	
TUNLA 1A 4.2% 126.500	R050 ADA - MNM 5000 RT direct ADA - LT intercept R143 ADA to TUNLA	TUNLA MNM FL290
	Runway 23	
KEMER 1B 126.500	ADA - RT intercept R050 ADA - MNM 5000 RT direct ADA - RT intercept R326 ADA to KEMER	ADA MNM 1500
MANAZ 1B 126.500	ADA - RT intercept R050 ADA - MNM 5000 RT direct ADA - R264 ADA to MANAZ	ADA MNM 1500
MILBA 1B 126.500	ADA - RT intercept R050 ADA - MNM 5000 RT direct ADA - RT intercept R085 ADA to MILBA	ADA MNM 1500
TARSU 1B 126.500	ADA - RT intercept R050 ADA - MNM 5000 RT direct ADA - LT intercept R236 ADA to TARSU	ADA MNM 1500
TUNLA 1B 4.2% 126.500	ADA - RT intercept R050 ADA - MNM 5000 RT direct ADA - LT intercept R143 ADA to TUNLA	ADA MNM 1500 TUNLA MNM FL290

Changes: Track



Changes: chart layout, ALT



ILS DME One 05
D 108.7 IADA
 .. - - - -

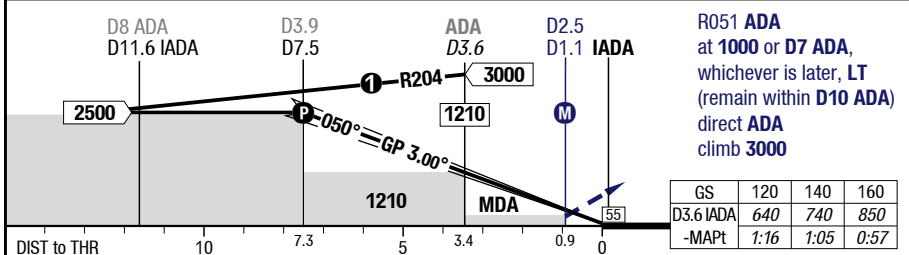
ATIS	119.225
TWR	121.100
GND	131.100
	121.900

A-Incirlık
 LTAG
 Do not mistake for LTAF

TRL ATC
 TA 10000

LOC 3.00° D IADA	7.5	6	5	4	3	2	
	2500	2020	1690	1360	1030	710	

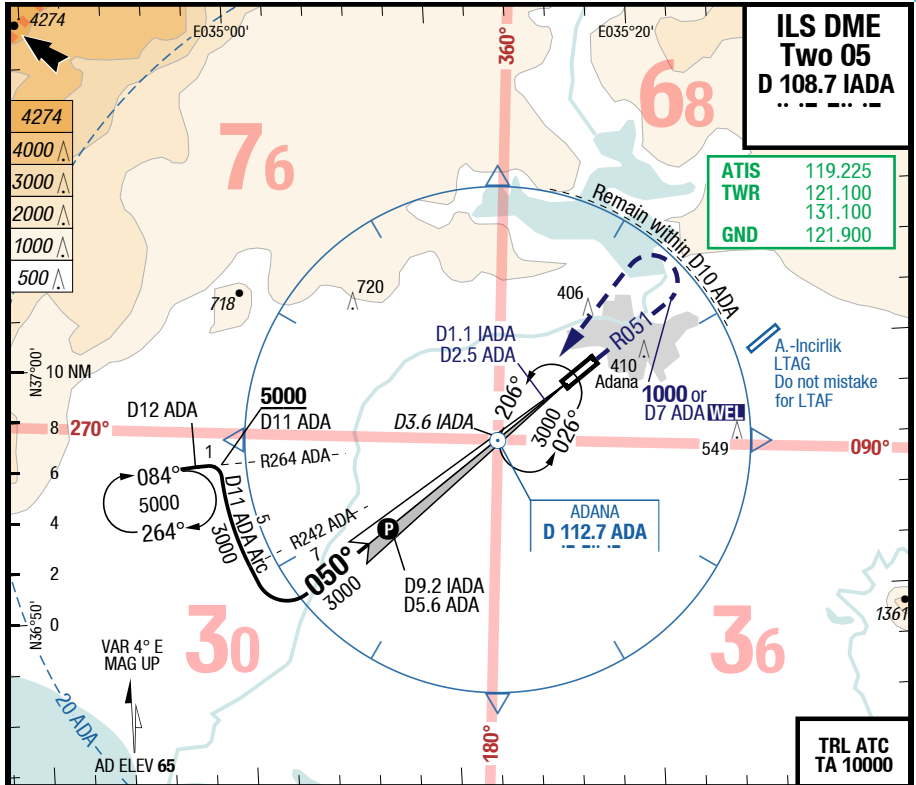
HL-P1 54 / 2hPa TDZ ---% +0.1%



05	Cat 1 DME 1)	LOC DME		Circling 2)
C	ft - m/km ft	250 - 550 310	350 - 900 400	1140 - 2.4V 1200
D	ft - m/km ft	250 - 550 310	350 - 900 400	1140 - 3.6V 1200

1) FD, AP or HGS required, else RVR 750m
 2) N of AD only

Changes: MISAP, OBST

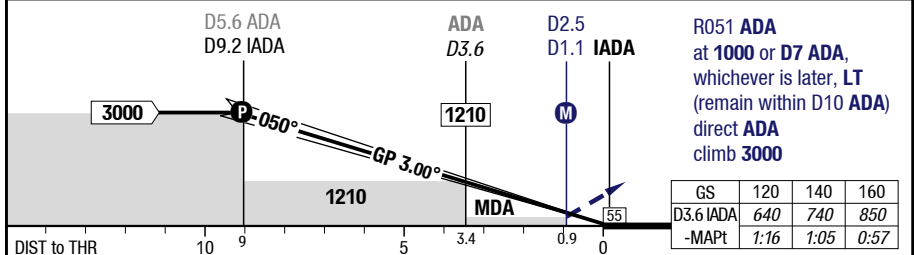


ILS DME Two 05
D 108.7 IADA

ATIS	119.225
TWR	121.100
	131.100
GND	121.900

TRL ATC
TA 10000

LOC 3.00° D IADA	9.2	8	6	4	3	2	 HL-P1 54 / 2hPa TDZ ---% +0.1%
	3000	2630	1980	1340	1020	690	

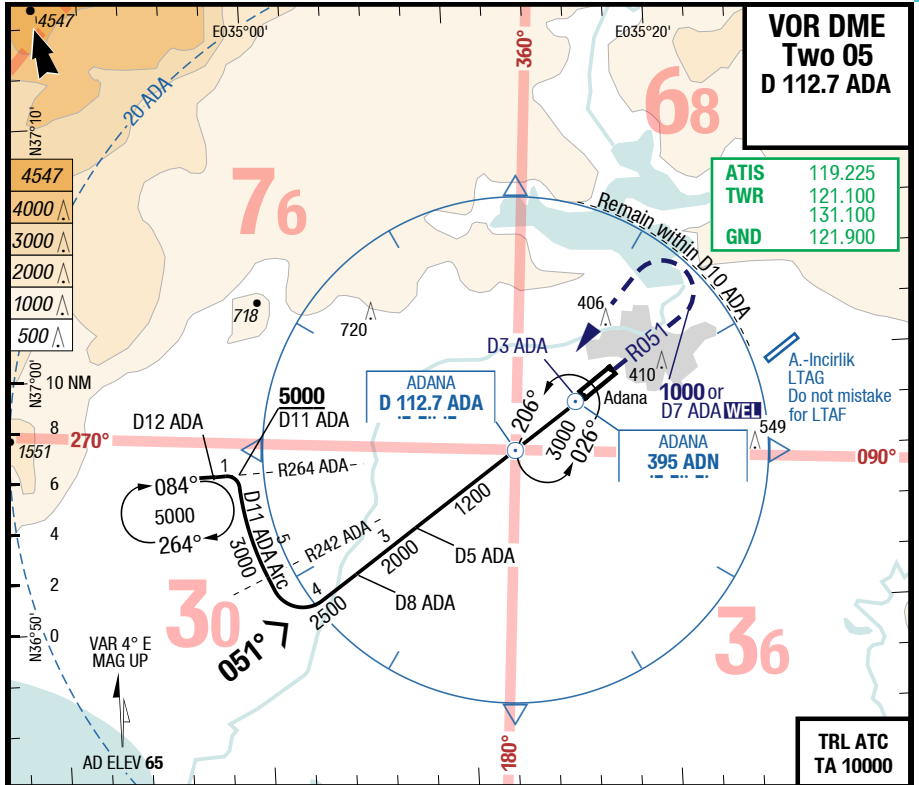


GS	120	140	160
D3.6 IADA	640	740	850
-MAPt	1:16	1:05	0:57

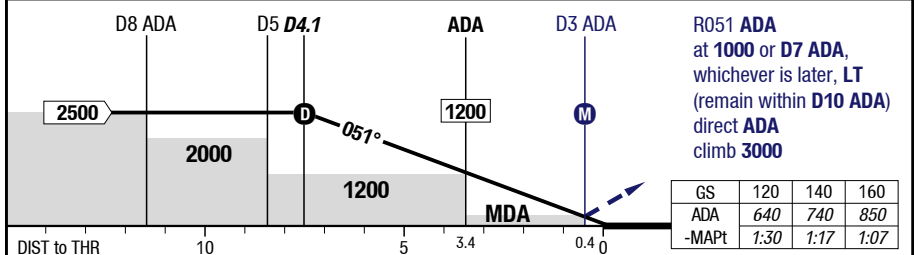
05		Cat 1 DME 1)	LOC DME 2)	Circling 3)	
C	ft - m/km ft	250 - 550 310	350 - 900 400	1140 - 2.4V 1200	
D	ft - m/km ft	250 - 550 310	350 - 900 400	1140 - 3.6V 1200	

1) FD, AP or HGS required, else RVR 750m
2) Timing to determine MAPt NA
3) N of AD only

Changes: MISAP, OBST



3.00° D ADA	4.1	2	1	ADA	1	2		50 HL
	051° RWY 050°	2500	1840	1520	1200	890		



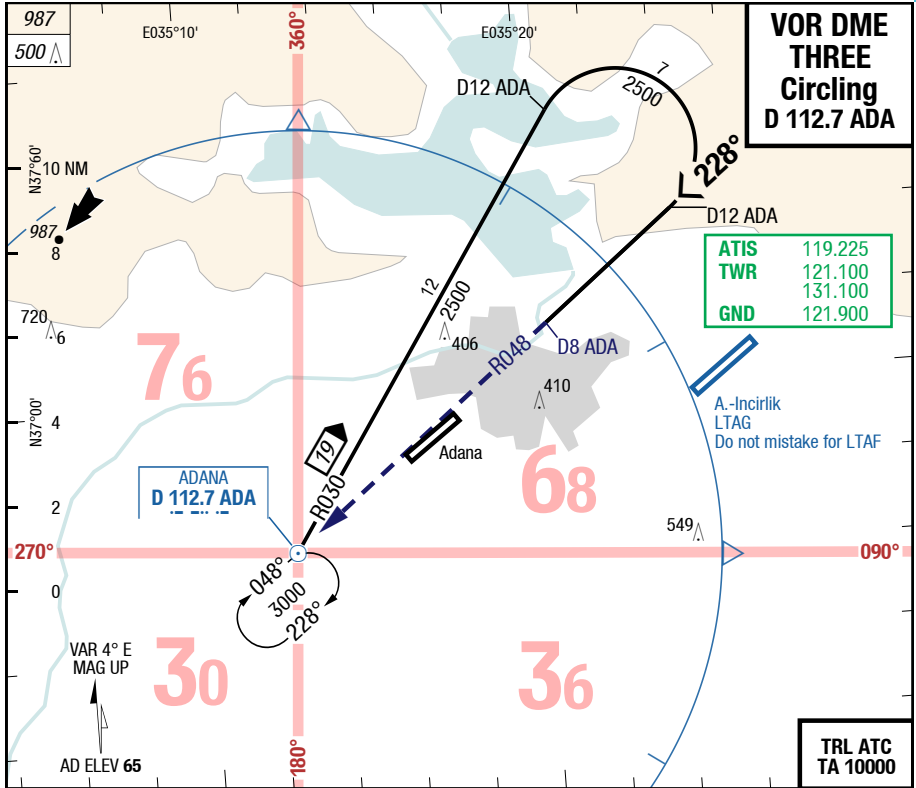
05	C	ft - m/km ft	VOR DME	VOR DME APL U/S	Circling ⁽¹⁾
			310 - 1.2V 360	310 - 1.9V 360	
05	D	ft - m/km ft	VOR DME	VOR DME APL U/S	Circling ⁽¹⁾
			310 - 1.2V 360	310 - 1.9V 360	

1) N of AD only

ADA-LTAF

7-70

VOR DME Three Circling

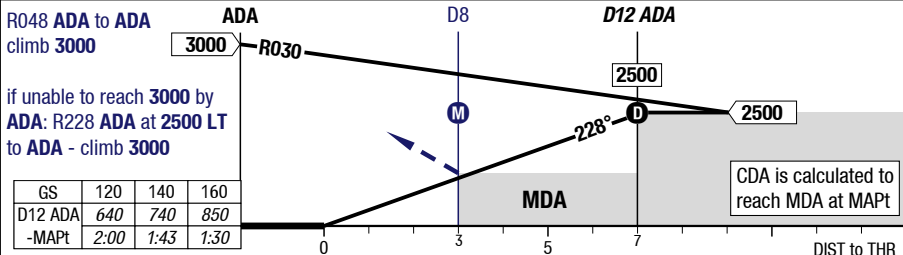


VOR DME THREE Circling D 112.7 ADA

ATIS	119.225
TWR	121.100
GND	131.100
	121.900

TRL ATC TA 10000

See AFC for RWY information and approach light system.	8	9	10	11	12	3.00°
	1200	1520	1850	2170	2500	D ADA



05/23	Letdown VOR DME				Circling ¹⁾
C	ft - m/km ft	Straight-in Not authorized			1140 - 5.0V 1200
D	ft - m/km ft	Straight-in Not authorized			1140 - 5.0V 1200

1) N of AD only

Changes: OBST